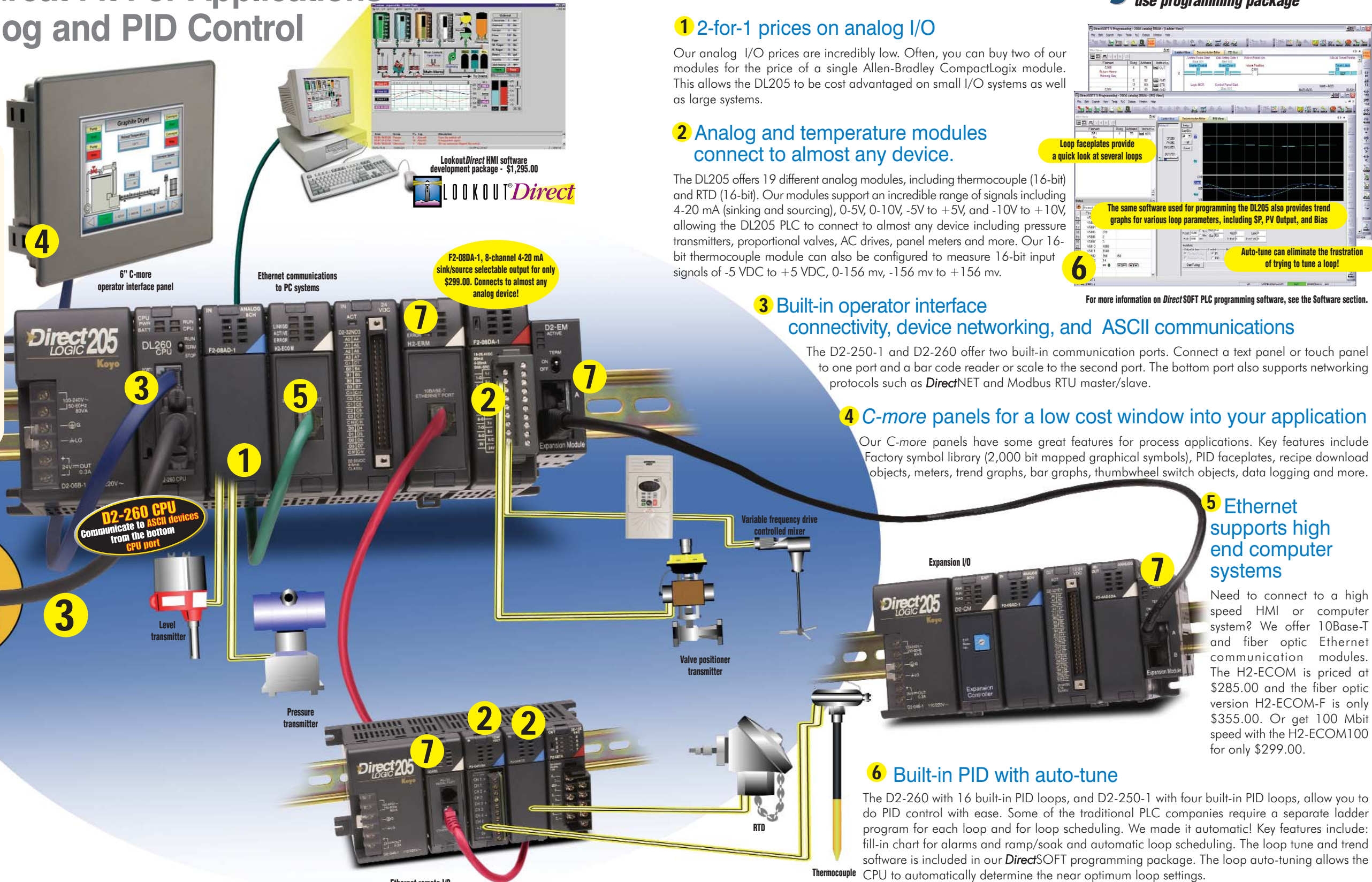


DL205 - Great Fit For Applications With Analog and PID Control

DirectSOFT⁵ Auto-tune PID and RLL in one simple-to-use programming package

Here's why

The DL205 PLC family, with all its peripheral products, is a great choice for applications that combine PID, analog, and sequential control functions, such as batch control, waste and water treatment, monitoring or control of remote tank/well/pumping stations, low cost instrumentation/test stands, and much more. Check out the top seven reasons why the DL205 is a great fit for these types of applications.



LookoutDirect HMI software development package - \$1,295.00
LOOKOUT[®]Direct

1 2-for-1 prices on analog I/O

Our analog I/O prices are incredibly low. Often, you can buy two of our modules for the price of a single Allen-Bradley CompactLogix module. This allows the DL205 to be cost advantaged on small I/O systems as well as large systems.

2 Analog and temperature modules connect to almost any device.

The DL205 offers 19 different analog modules, including thermocouple (16-bit) and RTD (16-bit). Our modules support an incredible range of signals including 4-20 mA (sinking and sourcing), 0-5V, 0-10V, -5V to +5V, and -10V to +10V, allowing the DL205 PLC to connect to almost any device including pressure transmitters, proportional valves, AC drives, panel meters and more. Our 16-bit thermocouple module can also be configured to measure 16-bit input signals of -5 VDC to +5 VDC, 0-156 mv, -156 mv to +156 mv.

3 Built-in operator interface connectivity, device networking, and ASCII communications

The D2-250-1 and D2-260 offer two built-in communication ports. Connect a text panel or touch panel to one port and a bar code reader or scale to the second port. The bottom port also supports networking protocols such as DirectNET and Modbus RTU master/slave.

4 C-more panels for a low cost window into your application

Our C-more panels have some great features for process applications. Key features include Factory symbol library (2,000 bit mapped graphical symbols), PID faceplates, recipe download objects, meters, trend graphs, bar graphs, thumbwheel switch objects, data logging and more.

5 Ethernet supports high end computer systems

Need to connect to a high speed HMI or computer system? We offer 10Base-T and fiber optic Ethernet communication modules. The H2-ECOM is priced at \$285.00 and the fiber optic version H2-ECOM-F is only \$355.00. Or get 100 Mbit speed with the H2-ECOM100 for only \$299.00.

6 Built-in PID with auto-tune

The D2-260 with 16 built-in PID loops, and D2-250-1 with four built-in PID loops, allow you to do PID control with ease. Some of the traditional PLC companies require a separate ladder program for each loop and for loop scheduling. We made it automatic! Key features include: fill-in chart for alarms and ramp/soak and automatic loop scheduling. The loop tune and trend software is included in our DirectSOFT programming package. The loop auto-tuning allows the CPU to automatically determine the near optimum loop settings.

7 Locate I/O anywhere

Reduce your wiring cost by putting the I/O next to thermocouples, sensors and other field devices by using expansion bases, remote bases, Ethernet remote bases and even fiber optic remote bases. Our analog and temperature modules work in all of these configurations.

Loop faceplates provide a quick look at several loops

The same software used for programming the DL205 also provides trend graphs for various loop parameters, including SP, PV Output, and Bias

Auto-tune can eliminate the frustration of trying to tune a loop!

For more information on DirectSOFT PLC programming software, see the Software section.

- Automation Direct
- PLC Overview
- DL05/06 PLC
- DL105 PLC
- DL205 PLC**
- DL305 PLC
- DL405 PLC
- Field I/O
- Software
- C-more HMIs
- Other HMI
- AC Drives
- Motors
- Steppers/Servos
- Motor Controls
- Proximity Sensors
- Photo Sensors
- Limit Switches
- Encoders
- Current Sensors
- Pushbuttons/Lights
- Process
- Relays/Timers
- Comm.
- TB's & Wiring
- Power
- Circuit Protection
- Enclosures
- Appendix
- Part Index