



WHAT'S UP WITH

AUTOMATIONDIRECT.com

AUGUST 2009

IN THIS ISSUE

- CLICK PLC with analog
- More DINnectors
- Multi-port junction blocks
- Panel interface boxes
- Motor monitor relays
- Higher-voltage contactors
- Flexible cord
- 22mm plastic pilot devices
- STRIDE Ethernet switches
- NITRA Pneumatics
- Encapsulated Transformers
- More stepper drives and motors, & much more...

FROM PLCs TO POWER CORDS

Many of the new products we've released in recent months will save you time and money in wiring and terminating your control systems. Our new ZIPport lines of multi-port junction blocks and panel interface connectors help organize machine wiring, reduce wiring errors and save on installation costs. New DINnector terminal block styles include circuit disconnects and supplementary circuit breakers that help you meet Code. And our new flexible cord offering has great prices on commonly used portable power cord for applications such as industrial machinery, motors, and temporary electrical power and lighting. With these and our feature this month - CLICK PLCs now with built-in analog - we're now approaching 8,500 components for you to save money on!

- *The AutomationDirect Team*

1-800-633-0405 | WWW.AUTOMATIONDIRECT.COM

CLICK PLCS NOW WITH BUILT-IN ANALOG I/O



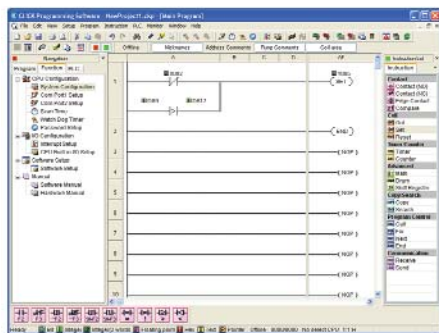
www.automationdirect.com/click-plc

Perfect for systems up to 142 I/O

Three new CPUs with built-in analog I/O have been added to the CLICK™ Micro Brick programmable controller line. The new CPUs feature two 0-5 VDC or 4-20 mA analog inputs and two 0-5 VDC or 4-20 mA analog outputs. These CPUs also have four built-in discrete inputs and four discrete sourcing, sinking or relay outputs. The modules include three communication ports (two RS232 and one RS485), real time clock and battery backup for internal SRAM. Four Basic CPU modules are also available having eight discrete DC or AC inputs and six DC or relay outputs. All CLICK CPUs are configured with the easy-to-use programming software, available as a free download. Prices for the analog CPUs start at \$129.00 .

The CLICK PLC line now includes:

- Seven stand-alone DIN-rail mountable DC-powered CPU combinations including:
 - 8 DC In / 6 DC Out (sinking) (\$69)
 - 8 DC In / 6 DC Out (sourcing) (\$69)
 - 8 DC In / 6 Relay Out (\$79)
 - 8 AC In / 6 Relay Out (\$79)
 - **NEW!** 4 DC In / 4 DC Out (sinking), 2 analog in, 2 analog out (current / voltage selectable) (\$129)
 - **NEW!** 4 DC In / 4 DC Out (sourcing), 2 analog in, 2 analog out (current / voltage selectable) (\$129)
 - **NEW!** 4 DC In / 4 Relay Out, 2 analog in, 2 analog out (current / voltage selectable) (\$139)
- Built-in communication ports (two in Basic CPUs, three in analog CPUs)
- Removable terminal blocks for easy wiring
- Eleven stackable, discrete I/O option modules
- Program AND documentation stored in CPU
- Supported by FREE, high-feature programming software



The free CLICK Programming Software is designed to be a user-friendly application, and the tools, layout, and software interaction provide ease-of-use and quick learning. Fully functional, you can create a PLC program in minutes. Or use it to configure a system and calculate your power budget automatically. The extensive help files provide information that will help you get acquainted with the software quickly.

MORE DINNECTORS

Starting at:
\$31.00
for 32

The DINnector line of terminal blocks now includes circuit disconnect, thermocouple and plug-in style terminal blocks plus supplementary circuit breaker terminal blocks and sockets.

- Disconnects allow fast circuit disconnection without rewiring; available with or without LED indicators
- Thermocouple terminal blocks provide suitable connections to thermocouple sensor wires
- Single and double-level plug-in terminal blocks accept EURO plugs
- Supplementary circuit breaker terminal blocks are available in 1/4 to 10A sizes; sockets available with or without LED indicators



www.automationdirect.com/dinnectors

MOTOR MONITOR RELAYS

Starting at:
\$21.00

New ProSense motor monitoring relays plug into industry-standard 8-pin octal sockets for DIN rail or panel mounting.

- Phase monitoring relays protect against undervoltage or overvoltage faults on typical 3-phase systems; also protect against single phasing
- Alternating relays are used for motor load protection where optimization of load usage is required by equalizing the run time of two loads
- Pump seal failure relays monitor the shaft seals for submersible pumps for leakage; single or dual-channel relays available



www.automationdirect.com/motor-control-relays

ZIPport JUNCTION BLOCKS

Starting at:
\$39.00

ZIPport multi-port junction blocks are a simple, cost-effective way to organize machine wiring, especially useful as sensor junction blocks to consolidate wiring from various types of sensors.

- 4, 6 and 8-port junction blocks
- Field wireable or five-meter cable versions feature four and five-pin M12 connectors
- Choice of one or two I/O per port
- Available with or without power and signal LED indicators
- Operating range of -20 to +80° C
- IP67 rated with all ports connected or covered with protective caps



www.automationdirect.com/junction-blocks

ZIPport PANEL INTERFACE BOXES

Starting at:
\$37.00

ZIPport™ panel interface connectors mount on the outside of electrical control panels and act as pass-through connections, allowing interface with PLCs and other programmable devices without opening the control cabinet

- Over 30 configurations available with single, duplex or GFCI power outlets, as well as a no-power option
- Communications connectors available include D-sub, RJ45, RJ12, USB, Ethernet and Allen-Bradley Data Highway
- Standard-reset 3A circuit breaker limits power output
- NEMA rated and UL approved; RoHS compliant



www.automationdirect.com/panel-interface-connectors

UP TO 575V MOTOR CONTACTORS

Starting at:
\$13.75

FUJI Electric's SC and Odyssey series of motor contactors are now available in voltages up to 575V.

- SC contactors in ranges of 440-480V and 500-550V at 60Hz; frame sizes of 43, 54 and 67 mm
- SC SUPERMAGNET contactors in 88, 100 and 115 mm frame models, with AC coil voltage ranges of 380-450V and 460-575V at 60Hz
- Odyssey series contactors in 138 and 148 mm frames, with voltage ranges of 380-450V and 460-575V at 50/60Hz



www.automationdirect.com/motor-controls

FLEXIBLE CORD

Starting at:
\$19.00
50 ft. SEOOW

Multi-conductor flexible service cord is now available for indoor and outdoor applications.

- Type SJEOOW: 300V, 18 to 10 AWG, 2, 3 and 4-conductor, 50 and 250 ft. lengths
- Type SEOOOW: 600V, 18 to 10 AWG, 2, 3 and 4-conductor, 50 and 250 ft. lengths
- Type W: 2000V, 8 AWG, 4-conductor, 10 to 250 ft. lengths
- UL, CSA, RoHS compliant



www.automationdirect.com/flexible-portable-cord

22MM PLASTIC PILOT DEVICES

Starting at:
\$4.75

This full line of 22mm plastic pilot devices, including pushbuttons, selector switches and joysticks, are made with fiberglass reinforced thermoplastic.

- Illuminated and non-illuminated pushbuttons in six colors come with one normally-open or normally-closed contact block.
- Illuminated and non-illuminated selector switches in two- or three-position models; key-operated versions also available
- Joysticks available in two- or four-position versions, with either maintained or momentary operation
- Contacts rated at 10 amps thermal current
- Accepts up to 14 AWG wire in pressure plate wire terminals
- UL listed, CSA, RoHS and CE compliant



www.automationdirect.com/22mm-plastic

STRIDE® ETHERNET SWITCHES

Starting at:
\$99.00

STRIDE line now includes metal and Lexan industrial unmanaged Ethernet Switches and Media Converter

- Lexan or aluminum housings
 - Industrial temperature range versions (Lexan): -10 to +60° C
 - Wide temperature range versions (Aluminum): -40 to +85° C
- Stride Ethernet Switches are specifically designed and built for industrial environments
- Reduce the number of collisions that slow down your network
- Detects the devices connected to each port and routes messages only through the appropriate ports
- Helps maintain consistent cycle times even during heavy I/O and data exchange traffic loads



www.automationdirect.com/ethernet

NITRA PNEUMATICS

Starting at:
\$4.00
5-pk fittings

NITRA pneumatics line includes tubing, fittings and flow control valves. Fitting bodies are made of thermoplastic with stainless steel gripping claws and are designed for pressures up to 150 psi.

- Polyurethane and Nylon tubing, in 100 and 500 ft. packages, in inch and metric sizes
- Push-to-connect fittings in 21 styles, including union straight, reducers, and tees
- Push-to-connect flow control (speed controller) valves, including elbow meter-in and meter-out, and inline styles



www.automationdirect.com/pneumatic-parts

HOLLOW SHAFT GEARBOXES

starting at
\$169.00

The Ironhorse® worm gearbox line has now been expanded to include a hollow shaft version of every size/ratio gearbox already offered.

- Six gear ratios from 5:1 to 60:1
- Four frame sizes
- C-flange input
- Cast iron, one-piece housing



www.automationdirect.com/worm-gearboxes

SURESTEP® STEPPING SYSTEMS

Stepping motors start at:
\$17.00

Expanded line includes five new stepping motors, three new linear power supplies and two new drives

- Bi-polar stepping motors now from 61 oz-in to 1291 oz-in
- Power supplies now include 48 VDC @ 5A, & 10A, and 70 VDC @ 5A, along with the existing 32 VDC @ 4A
- Two new advanced programmable drives offer:

- **Built-in Indexer**
- Serial Comms (PLC Control)
- Auto setup & Self-test mode
- Resonance Damping
- Microstepping res:
200 - 51,200 steps/rev
- Waveform smoothing
- Idle current reduction
- Non-volatile parameter storage
- Adjustable phase current
- Torque ripple smoothing



www.automationdirect.com/stepper-systems

ENCAPSULATED TRANSFORMERS

starting at
\$91.00

The Hammond HPS Fortress series transformers are encapsulated to seal out moisture/airborne contaminants and thus eliminate corrosion and deterioration. The NEMA 3R enclosure meets or exceeds NEMA and ANSI standards for indoor and outdoor applications, making them ideal for applications such as shopping centers, schools, sports complexes, office buildings and lighting.

- Available from 0.50 kVA up to 5 kVA
- UL and CSA listed, and CE marked
- 10-year limited warranty



www.automationdirect.com/power-transformers

CLASS 2 POWER SUPPLIES

Class 2
starting at
\$46.75

RHINO NEC Class 2 plastic low-profile switching supplies offer:

- Eight models with power ratings from 12W to 90W
- 5, 12 or 24 VDC adjustable output
- Universal input 85-264 VAC
- Output current limitation



www.automationdirect.com/class2-dc-power-supplies

TEMPERATURE MEASUREMENT

Switches start at
\$89.00

ProSense® temperature measurement devices

- TSD25 temperature switches from -4 to 284°F (-20 to 140°C)
- TTD25 temperature transmitters provide 4-20mA output with ranges of 0 to 100°C or 0 to 300°F
- RTD probes (4-wire, 100 Ω platinum, Class A elements) and thermowells



www.automationdirect.com/temp-sensors

C-MORE® REMOTE ACCESS

New feature
FREE
with all C-more full featured panels

View and control C-more panels from anywhere via a PC Internet Web browser

- Monitor and control screen operations of panel as if touching the panel itself
- Browser based - no additional software to purchase
- Three access levels with user configured passwords: View Only, View and Screen Change only, Full Control



www.automationdirect.com/C-more

CABLE TIES

100 pc packs start at:
\$1.00

Cable ties, mounts and installation tools are sold in 100 or 1,000-piece packs.

- Standard ties in white and black
- Black nylon lashing ties
- Releasable ties in 6 to 12-inch lengths
- Mounting head ties
- UV-resistant ties
- Identification cable ties



www.automationdirect.com/cable-ties

MORE WIRE DUCT STYLES

Wire Duct starts at
\$11.00

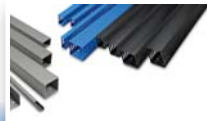
T1 series open-slot wire duct line:

- Blue in 24 sizes from 1" x 1" to 4" x 4"
- Black in 18 sizes from 1" x 4" to 4" x 5"
- White and gray available in more than 30 sizes up to 6" x 4"

Solid-wall gray in 16 sizes from 1/2" x 5/8" to 4" x 4"

All wire duct:

- Available in two-meter lengths
- Multi-piece packages or single pieces
- Comes with non-slip cover



www.automationdirect.com/wiring-solutions

PLC/DEVICE WIRING SYSTEM

Now
30%
Less than our previous low price

ZIPLink™ connections cut your PLC or Drive wiring time from hours down to minutes!

- Eliminate tedious wiring
- Uses half the space, at a fraction of the total cost of terminal blocks
- Available for PLCs and drives
- All new designs with an average price reduction of nearly 30%



www.automationdirect.com/ziplinks

MORE NEMA PREMIUM MOTORS

Starting at
\$310.00

With this addition, we now carry NEMA Premium motors from 1 to 100 hp.

- TEFC, rolled steel, C-face rigid base
- 10:1 variable torque and constant torque on VFD
- 3-year warranty
- Electrically reversible



www.automationdirect.com/ac-motors

DISTRIBUTION BLOCKS

Finger Safe starting at
\$8.25

Finger-Safe Power Distribution Blocks

- 200kA SCCR ratings w/ Cu conductors
- 175A to 760A (600 VAC or VDC)

Open-Style Terminal Blocks

- 200kA SCCR ratings w/ Cu conductors
- Up to 760A ratings (600 Volt)
- Ideal for UL508A panels
- Safety covers sold separately

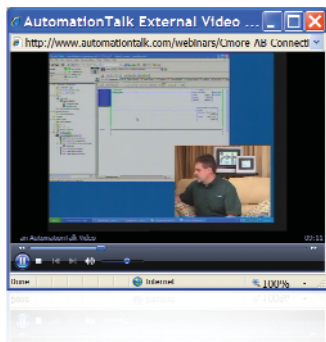
Open-Style starting at
\$6.75



www.automationdirect.com/power-blocks

Prerecorded seminars available at AutomationTalk

We try to keep you up to date with our live seminar schedule (see at right), but did you know we also record and archive live seminars for on-demand viewing? Visit www.automationtalk.com and view a seminar at your convenience. We also record additional presentations that may not have been broadcast live. The first such seminar is:



C-more to A-B Connectivity

This talk demonstrates the connection capabilities from our C-more touch panels to various Allen-Bradley PLCs, including Ethernet/IP. We also discuss C-more's ability to import the tag database from the RSLogix 5000 L5K file, a huge timesaver for system programmers.

See the complete list of prerecorded seminars at www.automationtalk.com.

Express Checkout feature added to online store

Express Checkout is the feature you've been waiting for if you normally ship to the same address using the same shipping and payment methods. The next time you place an order, step through the checkout process as normal. When you reach the order confirmation screen (Step 4), select "Enable Express Checkout" (located beside the SUBMIT ORDER button).

For future orders, upon checkout you skip directly to the confirmation page. If you need to make a change, there is a [change] link (beside shipping details, billing, shipping, contact, payment, shipping notes sections). Otherwise, you simply verify your information, enter your PO# (when necessary) and SUBMIT.

Online returns feature added

No one ever looks forward to returning a product, but we try to make the process as painless as possible. We offer a 30-day money-back return period on all products except Marathon Electric motors and refurbished products, and we've recently made it a lot easier to request a 30-day return from our Web site.

It only takes three simple steps to initiate a 30-day return online:

1. After you have logged in to your AutomationDirect account, visit our Returns page and choose to do a 30-day return.
2. You'll see a list of your orders which fall within the 30-day return window. Choose the order which contains the items you wish to return.
3. Verify your contact information, scan the list of items from your order, and enter the quantities you need to return. Submit the return, and that's it!

Our Returns Team will look over your return request, and if everything checks out, the necessary paperwork and instructions will be sent to you right away. For additional information, please review our Warranty and Returns guidelines.



automationtalk

Upcoming Webinars

PLCS

August 5, 2009
2:00pm EST

The entire line of our PLCs will be covered in this fast paced 40 minute session. We will give a brief history of PLCs, the various classifications, and discuss how PLCs are getting smaller while at the same time becoming easier to use, offering more features, while becoming less expensive. Customer examples will be discussed, and we will also explain our programming software lineup with a short demo included.

WHAT'S NEW

August 19, 2009
2:00pm EST

AutomationDirect continues to add many new product lines and line extensions for 2009. So far we have added over 1,200 new part numbers. Join us for 40 minutes while we show you the new products and how they can save you money.

CLICK PLC ANALOG

September 2, 2009
2:00pm EST

We cover the latest additions to the CLICK PLC family, including three new analog CPUs, calendar and clock feature, battery backup, and an additional built-in RS 485 communications port on the analog CPUs. See a quick demo of these enhancements using the free programming software.

Sign up at
www.AutomationTalk.com

We're introducing NEW PRODUCTS every month, all at our EVERYDAY LOW PRICES

Let AutomationDirect help you stretch your controls and maintenance budget!

This issue of our Product News Bulletin will keep you up to date.

WHAT'S UP WITH AUTOMATIONDIRECT

IN THIS ISSUE



NITRA pneumatic tubing and fittings
Page 5



Flexible cord
Page 4



ZiPort junction blocks and panel interface boxes
Page 3



CLICK PLC with built-in analog
Page 2

AUTOMATIONDIRECT.COM
3505 Hutchinson Rd.
Cumming, GA 30040