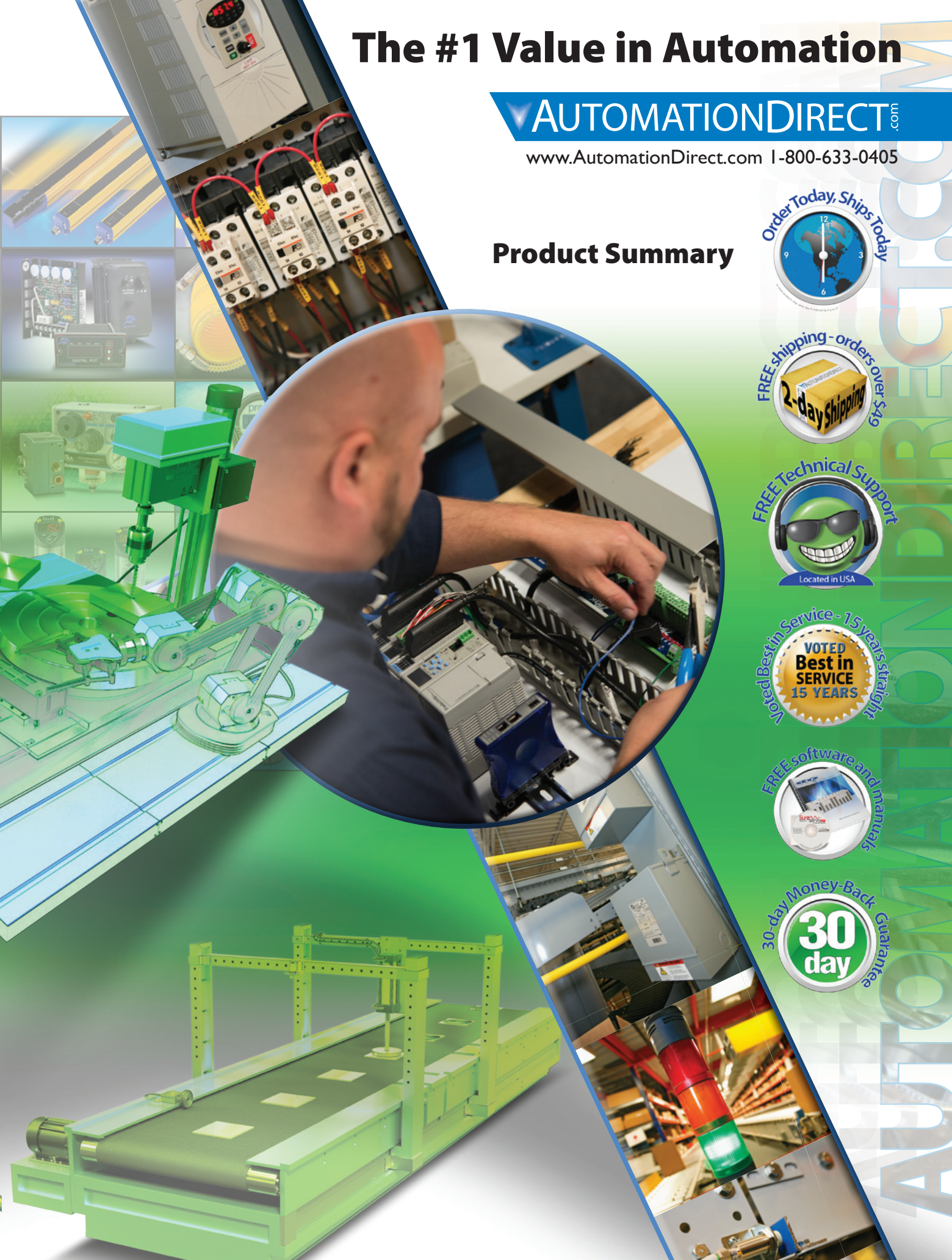


The #1 Value in Automation

AUTOMATIONDIRECT.com

www.AutomationDirect.com | 1-800-633-0405

Product Summary



Atlas, AutomationDirect, automationdirect.com, AUTOMATION NOTEBOOK, AcuAmp, CLICK, C-more, Direct-LOGIC, DirectSOFT, DirectNET, DirectView, DirectTouch, DINnectors, Do-More, DURAPULSE, Gladiator, IronHorse, NITRA, PLCDirect, PLCDirect by KOYO, Point of View, Productivity, ProSense, Rhino, SCREEN CREATOR, Solo, Stellar, Stratus, Stride, SUREMOTION, SURESTEP, SURESTEP, SURESERVO, ViewMarq, ZIPport, and WinPLC are registered trademarks of Automationdirect.com (doing business as AutomationDirect). Other pending and unregistered marks of AutomationDirect also appear throughout this catalog. This publication is based on information that was available at the time it was printed. At AutomationDirect, we constantly strive to improve our products and services, so we reserve the right to make changes to our products, terms and conditions and/or publications at any time without notice and without any obligation. This publication may also discuss features that may not be available in certain revisions of the product. AutomationDirect makes no representation or warranty, expressed, implied, or statutory with respect to the information in this catalog. Our terms and conditions of sale, as in effect at the time of printing, may be found on the following pages. Our standard terms and conditions in effect at the time an order is accepted (including as to limited warranties and limitations of liability) apply to all purchases. We do not accept any deviations from those terms. If any additional or different terms or conditions are included in your order, we may choose to fulfill your order, but the additional or different terms and conditions will not apply or be deemed accepted by us. This publication contains many specifications, wiring diagrams, and other types of information related to the various product offerings. However, under no circumstances should you use this document for installation, operation, or troubleshooting of any equipment. Always consult the appropriate product documentation prior to using the equipment. If you have any questions concerning the installation or operation of this equipment, or if you need additional information, please call for assistance.

Copyright © February 2018, Automationdirect.com Incorporated

All Rights Reserved.

No part of this publication may be copied, reproduced, or transmitted in any way without the prior, written consent of Automationdirect.com Incorporated.

These Terms and Conditions supercede all previous publications' Terms and Conditions.

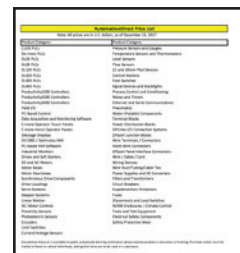
- **Buy direct and save**
- **Everyday low prices**
- **Voted best in customer service***
- **Same-day shipping**
- **Satisfied customers**
- **Tens of thousands of products!**

Complete up-to-date pricelist is always available online.

- Find products, search, print or e-mail
- Click on part numbers to link directly to our online store for pricing, specs, up-to-the-minute stocking information and more

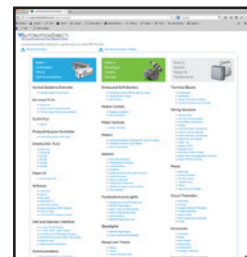
Download your copy:

www.automationdirect.com/pricelist



Online catalogs with pricing

Our complete catalogs, with current pricing, are online in PDF format. PDFs have easy-to-use features such as search, direct links to online store by part number, easy navigation and much more. Save most referenced sections to your mobile device or computer.



Check out all three books:

www.automationdirect.com/PDFcatalog



While our most up-to-date information is always online 24/7, some people still prefer to have a copy locally.

If you'd like a copy of our latest catalogs on USB, they are available.

Request your USB catalog

www.automationdirect.com/USBcatalog

Contacts

fax: 1-770-889-7876

phone: 1-800-633-0405 or
1-770-889-2858

Monday - Friday 9 a.m. - 6 p.m. ET

mail: AutomationDirect
3505 Hutchinson Road
Cumming, GA 30040

Technical Support

fax: 1-770-886-3199

phone: 1-770-844-4200

What makes us the #1 Value in Automation?

In addition to great products with great pricing you get:

- **FREE Technical Support**
- **FREE Shipping on orders over \$49****
- **FREE Product Manuals (download)**
- **FREE software for many products**
- **30-day money-back guarantee on most products**

* By readers of Control Design magazine, in multiple product categories

** See Terms and Conditions or our Web site for details

www.automationdirect.com

1-800-633-0405

The common sense way to buy industrial controls[®]



www.AutomationDirect.com

Quality Products www.automationdirect.com

Great Prices www.automationdirect.com/pricelist

Helpful Online Resources www.automationdirect.com/videos

Solid Company www.automationdirect.com/info

#1 Voted Service www.automationdirect.com/service

Satisfied Customers www.automationdirect.com/reviews

AutomationDirect.com has been a leader in providing affordable, quality industrial control products to the U.S. and Canada for more than two decades.

As a privately-held efficiently run company, we take pride in serving our customers the way they want to be served - honestly and fairly. We do everything we can to accomplish this day in and day out.

- Honest up front pricing (no gimmicks)
- FREE tech support - independently rated tops in service for the past 15 years
- Quick delivery - order today, it ships today
- FREE shipping on orders over \$49



AutomationDirect.com HQ and warehouses

AutomationDirect.com
Engineering, Development and Research

Our campus is located about 45 minutes north of Atlanta, GA, USA.
We're all here - our sales and technical support teams, purchasing, accounting, and of course our huge warehouses and speedy logistics team.

Great Prices  www.automationdirect.com/pricelist

If it's in your cabinet, it's online
at www.AutomationDirect.com
FOR LESS!

CPU and I/O Comparison	AutomationDirect CLICK	AutomationDirect Do-more! (BRX)	AutomationDirect Productivity2000	US.	Allen-Bradley CompactLogix
Base (if required)	N/A N/A	N/A N/A	\$69.00 P2-04B		N/A N/A
Power Supply	\$39.00 C0-01AC	N/A N/A	\$69.00 P2-01AC		\$508.00 1789-PA4
CPU	\$139.00 C0-10ARE-D (Ethernet built in)	\$489.00 BX-DM1E-36ER3 (Ethernet built in)	\$255.00 P2-550 (Ethernet built in)		\$7,600.00 1789-L45 (Serial port only)
16 AC Inputs	\$40.00 C0-08NA (8-point AC Input)*	\$60.00 BX-16NA	\$105.00 P2-16NA		\$317.00 1789-IA16
16 24VDC Inputs	\$45.00 C0-16ND3	\$0.00 Included with CPU	\$69.00 P2-16NE3		\$270.00 1789-ID16
8 Relay Outputs	\$40.00 C0-08TR	\$0.00 Included with CPU	\$51.00 P2-08TRS		\$327.00 1789-QW8I
8 Analog Input Channels (mA)	\$89.00 x 2 (2) C0-04AD-1	\$187.00 BX-08AD-1	\$199.00 P2-08AD-1		\$873.00 1789-IF8
Total System Price	\$481.00	\$736.00	\$817.00		\$9,895.00

*C0-08NA used in conjunction with eight AC inputs on CPU gives the 16 points needed.
All prices are U.S. published prices. AutomationDirect prices as of 12/13/2017. Allen-Bradley prices taken from www.ab.com 12/13/2017.

Wire 500 ft. Spools	AutomationDirect Price/Part Number
Type MTW 18AWG blue	\$35.00/MTW18BL
Type MTW 16AWG red	\$48.00/MTW16RD
Type MTW 14AWG red	\$72.00/MTW14RD
Type MTW 12AWG blue	\$99.00/MTW12BK
Type TFFN 18AWG black	\$33.00/TFFN18BK
Type TFFN 16AWG red	\$45.00/TFFN16RD
Type THHN 14AWG white	\$62.00/THHN14WH
Type THHN 10AWG black	\$142.00/THHN10BK

All prices are U.S. published prices. AutomationDirect prices as of 12/13/2017.

Pneumatic Cylinders	AutomationDirect NITRA	US.	MSC Norgren	McMaster-Carr
Non-repairable Air Cylinder 2 inch bore, 4 inch stroke, double acting, pivot/double end mount	\$64.00 A3204DD		\$130.74 36697563	\$93.36 6498K478
Non-repairable Air Cylinder 3/4 inch bore, 1 inch stroke, single acting spring return, nose mount	\$13.00 A12010SN		\$25.22 36696458	\$18.50 6498K141
Non-repairable Air Cylinder 1-1/16 inch bore, 6 inch stroke, double acting, pivot/double end mount	\$29.50 A1706DDP		\$63.43 36696847	\$45.50 6498K558

All prices are U.S. published prices. Many other part numbers are available from all vendors. AutomationDirect prices as of 12/13/2017. Norgren prices are from www.msccdirect.com 5/2/2017. McMaster-Carr prices are from www.mcmaster.com 5/2/2017. Prices subject to change without notice.

Proximity Sensors	AutomationDirect Price/Part Number	US.	Allen-Bradley Price/Part Number
5 mm three-wire DC prox with pico Q/D	\$41.00 PD1-AP-1F		\$169.00 871C-D1NPS-P3
8 mm three-wire DC prox with pico Q/D	\$21.00 AE1-AN-2F		\$100.29 872C-D3NN8-P3
12 mm two-wire DC shielded prox with 2 m cable	\$22.00 AM1-A0-2A		\$87.11 872C-D3NE12-A2
18 mm shielded AC prox with 2 m cable	\$31.00 VK1-A0-1B		\$122.89 872C-A5N18-A2

Q/D = quick disconnect

*All prices are U.S. published prices. AutomationDirect prices as of 12/13/2017. Allen-Bradley prices are taken from www.wernerlelectric.com 4/20/2017. Prices may vary by dealer. Many other part numbers are available from all vendors.

PMDC Motors, 56C	AutomationDirect IronHorse	US.	Baldor Price/Part Number	Dayton Price/Part Number
0.33 hp, 90V	\$134.00 MTPM-P33-1L18		\$755.00 CDP3320	\$548.00 2M509
1 hp, 180V	\$217.00 MTPM-001-1M18		\$1,248.00 CDP3455	\$881.50 42378
2 hp, 180V	\$372.00 MTPM-002-1M18		\$2,742.00 CDP3585	

All prices are U.S. published prices. AutomationDirect prices from December 2017 Price List. Baldor prices taken from www.baldor.com 5/2/2017. Dayton prices taken from www.dayton.com 5/2/2017. Prices and specifications may vary by dealer and configuration. Prices subject to change without notice.

VPN Router/ Platform Comparison	AutomationDirect STRIDE SiteLink	US.	eWON COSY 131
VPN Router (wired only)	\$450.00 SE-SL3011 • # Ports: 5 (RJ45) • Port Speed: Gigabit Ethernet (1000Mbps) • Case Style: Metal, IP20, DIN Rail • 2 year warranty		\$656.00 EC61330 • # Ports: 4 (RJ45) • Port Speed: Fast Ethernet (100Mbps) • Case Style: Metal, IP20, DIN Rail • 2 year warranty
VPN Router (wired/WiFi)	\$550.00 SE-SL3011-WF • # Ports: 5 (RJ45) • Port Speed: Gigabit Ethernet (1000Mbps) • Case Style: Metal, IP20, DIN Rail • 2.4GHz antenna sold separately (starting at \$8.00) • 2 year warranty		\$763 EC61330 • # Ports: 4 (RJ45) • Port Speed: Fast Ethernet (100Mbps) • Case Style: Metal, IP20, DIN Rail • 2.4GHz antenna included • 2 year warranty
VPN Router (wired/cellular)	\$630.00 SE-SL3011-4G • # Ports: 5 (RJ45) • Port Speed: Gigabit Ethernet (1000Mbps) • Case Style: Metal, IP20, DIN Rail • 4G LTE (AT&T Certified) • 2 year warranty		\$839 EC61330 • # Ports: 4 (RJ45) • Port Speed: Fast Ethernet (100Mbps) • Case Style: Plastic, IP20, DIN Rail • 3G Non Certified • 2 year warranty
Platform Cost	FREE • \$50 per month per account • Unlimited users • Unlimited mobile sessions • Unlimited client connections • FREE smartphone app		FREE • \$50 per month per account • Unlimited users • 3 mobile sessions • 1 client connection

All prices are U.S. published prices. AutomationDirect prices as of 12/13/2017. eWON prices taken from www.ewon.com 10/10/2017.

Safety Devices	AutomationDirect Price/Part Number
Datalogic safety light curtain, sender/receiver pair, hand protection, 24 VDC, 30mm resolution, 300mm protected height, 0.2-20m operating distance, safety category Type 4, IP65.	\$558.00 SG4-30-030-00-E (sender/receiver)
Safety limit switch, pull-reset action, plunger actuator, 30mm plastic body, 1/2 NPT	\$13.00 AP2R11X11
Safety relay module, single channel, for E-stop circuits, 24 VDC, 2 N.O. contacts	\$88.00 LG5924-02-61-24

All prices are U.S. published prices. AutomationDirect prices as of 12/13/2017.
Prices subject to change without notice.

Servo Systems	AutomationDirect Price/Part Number	US.	Allen-Bradley Price/Part Number
Digital Servo Drive	\$488.00 SVA-2040		\$1,790.00 2098-DSD-005
100W Servo Motor with connectorized Leads	\$325.00 SVL-201		\$584.00 TLY-A130T-HK82AA
Breakout Board Kit for CN1 Control Interface	\$79.00 ZL-SVC-CBL50 + ZL-RYB50		\$268.00 2090-USBK-D4401
10' Motor Feedback Cable	\$49.50 SVC-EFL-010		\$91.80 2090-CFBM6DF-CBA03
10' Motor Power Cable	\$29.50 SVC-PPL-010		\$103.00 2090-CFBM6DF-16A03
Configuration Software	FREE SV-PRO*		\$75.00 2098-UWCPRG

*SureServo Pro software is FREE when downloaded and is also available for \$9.00 on a CD

Complete 1-axis 100W System \$971.00 \$2,911.80

All prices are U.S. list prices. AutomationDirect prices as of 12/13/2017.
The Allen-Bradley 100W system consists of part numbers shown in table above with prices from
www.wernerlelectric.com, www.todaycomponents.com 4/20/2017.

AutomationDirect: Shopping the world to bring you the most practical products in the industry, in-stock, ready to ship and at the right prices.

"They seem to have culled down all the products in the world to a useful set that are properly priced, yet no junk. And they can offer their own support for most of them, not shuffle me off to the manufacturer. Many people have started using them based on my recommendation, and they thank me."

- Chris in Kettering, Ohio

"Your company is exactly what I was looking for. Detailed specs are a must when working with automation products, and I have not needed to ask any questions as all the information is already on the site.

Lightning fast shipping has been great, and when I make future orders I will not think twice about availability; again right there on the site. Keep up the great work! You are truly making it a pleasurable experience to shop online."

- Dan in Akron, OH

"As an automation integrator, AutomationDirect is usually my first stop when starting a new design or developing a proposal. Their Web site has all of the specifications and information needed when trying to come up with solutions for easy and difficult design challenges.

Another great advantage to my business is the ability to get pricing, check availability and place orders after normal business hours (this is the time I can work without interruption). Keep up the great work!"

- Jay in Collegeville, PA

So why are our prices so low?

AutomationDirect offers tens of thousands of high-quality industrial automation products, both name brand and private-labeled. We get great prices from our suppliers because of our volume purchases, so that means we can offer very attractive prices on everything from programmable controllers to terminal blocks.

Instead of paying salespeople, we invest in offering the most comprehensive information at your fingertips, from detailed product specs to educational content and videos.

We're adding products all the time

We're adding products continuously, choosing the best-in-class for features, price and quality. Our name-brand products come from companies such as Fuji Electric, Cutler-Hammer, and Hubbell/Wiegmann. These are multi-billion dollar companies that build world-class quality products often sold through other automation companies as well.

We also offer private-labeled products for even more savings. The manufacturers of these products are often building products for other leading automation companies and large consumer companies. We co-engineer many of these products with the manufacturer to ensure our customers are getting the features they ask for. And to assure availability, we maintain inventory at levels that consistently allow us to ship over 97.5% of our orders complete, the same day the order is received.



 AUTOMATIONDIRECT.com

This ".com" is powered by ".awesomepeople"

Check us out for our prices,
keep coming back for our service.

For over twenty years our sole focus has been customer service. That takes many forms: great prices, fast delivery, and quality products. But regardless of our product selection and other tangibles like pricing, the intangible value of customer service is something that cannot be faked, replaced by machinery or glossed over with a free lunch from a visiting sales rep.

Our team members here at AutomationDirect.com approach every day with this one goal in mind - serve the customer. It's a simple philosophy that many companies forget or make too complex and then fail at it. If the answer to any decision is "Yes, this is good for our customers", then we do it.

It's that simple.

"Should we have real upfront pricing online and realtime stock availability?"

Yes, this is good for our customers."

"Should we have FREE tech support before, during, and after any sale instead of charging yearly fees for tech support?"

Yes, this is good for our customers."

"Should we offer FREE software on many products instead of charging licensing fees?"

Yes, this is good for our customers."

"Should we have all our documentation online for FREE so people can access anytime, even before they choose to purchase?"

Yes, this is good for our customers."

"Should we offer more selection by consistently introducing more new quality products with great prices monthly, sometimes weekly?"

Yes, this is good for our customers."

"Should we offer FREE shipping for orders over \$49?"

Yes, this is good for our customers."

"Should we be fiscally responsible and run an efficient business so customers can rely on us decade after decade after decade?"

Yes, this is good for our customers."

All these are discussions we've had internally and all have had certain aspects of "can we do that?", "that will be hard to accomplish", "no one else is doing that, how can we?". But if you bring it back to the simple answer, "Yes, this is good for our customers", then the perceived obstacles really don't matter.

Our company has evolved dramatically since 1994 and it's this type of decision making by all our team members over the years that keeps our customers coming back and new customers checking us out daily.

If you're a current customer, we sincerely thank you for your business. We wouldn't be here if it wasn't for you and promise to do our best for you every day. If you're new and checking us out for the first time, we hope you give us an opportunity to serve you.



VOTED
Best in
SERVICE
15 YEARS



VOTED
Best in
SERVICE
15 YEARS

Voted #1 in service:
www.automationdirect.com/awards

Voted #1 mid-size company
to work for in Atlanta:
www.automationdirect.com/workplace

What our current customers think:
www.automationdirect.com/reviews



TOP
100
WORKPLACES
2014



Almost 25 years of affordable innovations have made us . . . the #1 VALUE IN AUTOMATION!

AUTOMATIONDIRECT

1994

1st

Direct Seller of PLCs
"You can't sell PLCs from a catalog, nobody does that!"

We've never been big supporters of the word "can't". In order to help you buy affordable PLCs we had to turn the industry upside down and offer a better, more direct way. Even though they said it couldn't be done, we knew that a more direct sales model would allow us to offer you better prices and service.

Pretty simple.

Shorter path between product and purchaser means less markup along the way.

1994

1st

Windows-based programming package for small PLCs
"Where's the DOS prompt?"

To help make PLC users' programming task easier, we developed software that was easier to use.



1999
Hundreds of parts



1994
200 pages



2018
Digital catalog continually updated online and on USB

1999

1st

Direct ONLINE Seller of PLCs & Industrial Controls
"You can't sell PLCs from a Web site, nobody does that!"

We saw ecommerce as a way to reach more customers and provide a better experience when buying industrial controls. So instead of focusing solely on what was already working (our printed catalog at the time), we launched a fully functional Web store to take advantage of the power of the Internet.

2018
Tens of thousands of parts and adding more almost weekly



2001

AutomationDirect is Voted #1 in Service
Caught the industry by surprise but not our customers. They've known since day one, we've got their back. **Our support is always FREE!**
And we've gotten top honors for 15 years straight

2010

2-Day Delivery is introduced

"You can't stock enough inventory to have it ship same day as it's ordered?!"

Yep, we do.

And **shipping is FREE** on most items if your order is over \$49

2010
Product Year 10
Category Winner

2010
GOLDEN MOUSETRAP AWARDS
Best New Product

2011
First Team LEADERSHIP IN AUTOMATION 2011
Manufacturing & Automation World

2013
First Team LEADERSHIP IN AUTOMATION 2013
Manufacturing & Automation World

2014
BEST PLACES TO WORK
Atlanta, GA USA

2015
Productivity2000 PLC, feature-packed PLC with enhanced capabilities and a slim, affordable design!

2015
CLICK Ethernet PLC

2007
Our online i-catalog launches

2015
Almost 4,000 pages complete with specs & pricing available 24/7

2015
YouTube
Hundreds of FREE helpful tutorials, demos, and more

2007
Our online video library launches

2008
CLICK series, our most versatile and expandable brick PLC, starts at \$69!

2012
The Do-more series CPU adds speed and greater functionality to the time-tested DL 205 line.

2009
Productivity3000 series is launched, featuring a high-performance CPU and advanced control capabilities.

2013
The Do-more T1H series CPU adds control capability to the dependable Terminator field I/O line.

2017
CLICK Ethernet PLC units with built-in analog

2017
Do-more BRX family of PLCs, powerful micro controllers that pack a big punch for a little price!

2017
Productivity 1000: an economical addition to our Productivity PLC family.

1st
Brick PLC under \$200

1996
DL105 with 14 built-in I/O is the first brick PLC under \$200

1st
\$99 PLC
1999
\$99 DL05 brick PLC with expansion slot at a ground-breaking price.

1994

DirectLOGIC (DL) PLC line is introduced.
A good I/O range with low prices versus the traditional suppliers make these an instant hit in the industry. Our company turns a profit in the fourth month of operations, making us a viable alternative in the industrial controls market.

DL205

DL305

DL405

VOTED
Best in SERVICE
15 YEARS

We opened our doors in 1994 and from day one our focus has been providing you with quality products, great prices and outstanding service. From the beginning our customers have given us great feedback and ideas on what industrial controls to sell and even how they want them sold . . . 2-day delivery, FREE shipping. . . these innovations, along with many others, were made possible because our customers told us.

For almost 25 years they have allowed us to serve them, a job we take very seriously, and we want to sincerely thank them for giving us that opportunity. It has been quite a journey so far but we believe we're just getting started.

Affordable Innovation? What the heck is that?

Sometimes a better way of doing something isn't just one added product feature or a short term price discount. It's a combination of several product enhancements, better long term prices and service enhancements that are out of the norm for our industry. We're always up for a challenge!

At AutomationDirect.com we have the PLCs you need at the prices you want.

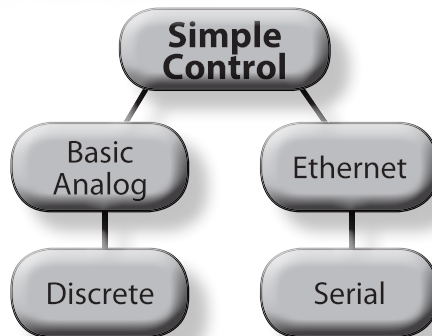
Regardless of your project or system needs, AutomationDirect has a PLC to match your specs and your budget. So whether you're building a simple process or a complex machine, you can count on us for affordable PLCs you can rely on.

THE BEGINNER'S
BEST FRIEND

CLICK
Koyo

CLICK PLCs
Basic PLC Unit
starting at
\$69

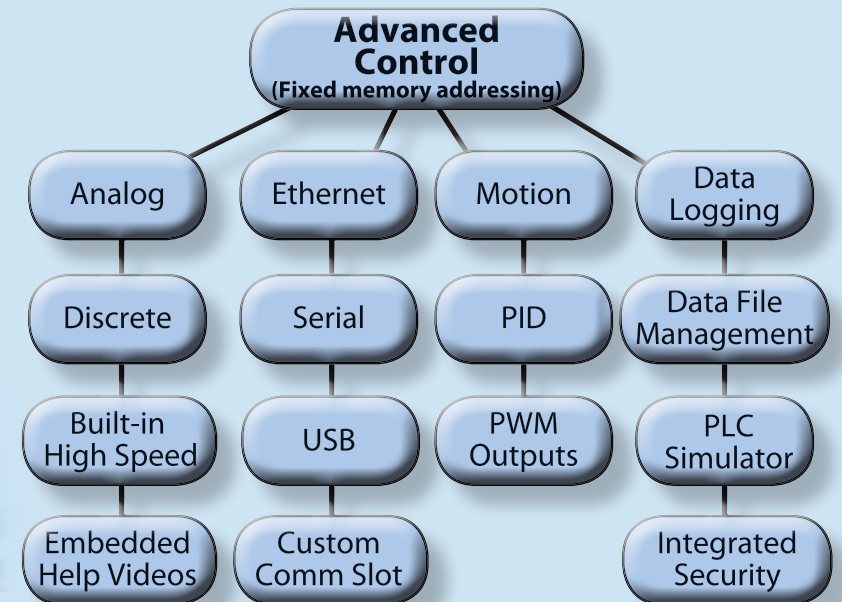
The CLICK PLC family offers extreme value for everyday applications. The compact size and easy programming make CLICK great for small applications and beginner projects.



MASTER YOUR
CONTROL CHALLENGE
WITH THE POWER OF
DO-MORE!

Do-more!

**Free PLC
Programming
Software & Tech
Support for Life!**



Do-more PLCs starting at **\$199**

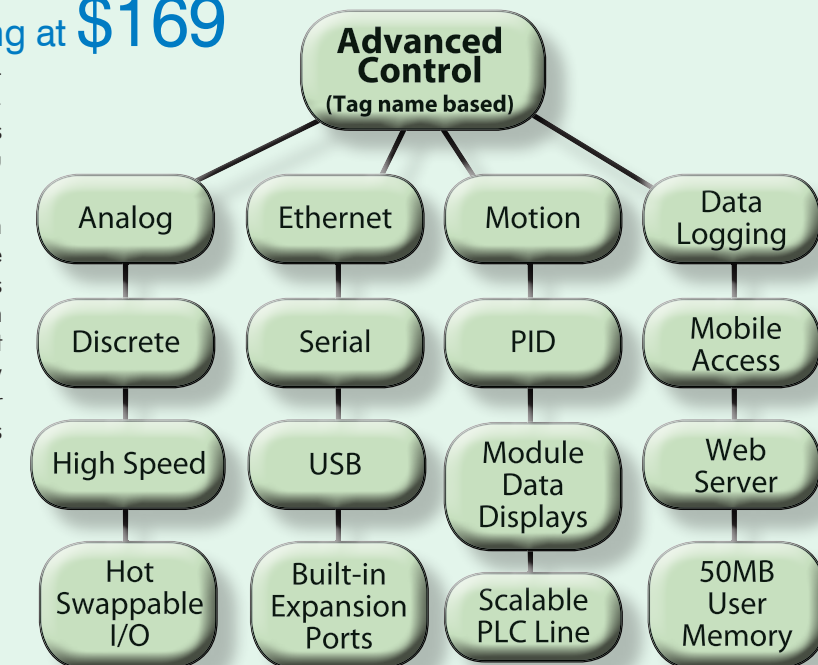
The Do-more PLC family is determined to get it done. This programming powerhouse has one of the most advanced instruction sets in the market and many other features that allow it to stand strong against any challenge.

Productivity[®] Series

Productivity Series CPU starting at **\$169**

Are you still paying the price for your Allen-Bradley controller? Are you tired of the never-ending software and support expense? Has the unbearable cost of ownership taken you by surprise?

Well now you can break FREE with Productivity. The Productivity Series PLCs are high-performance tag name based controllers with expansive built-in communication options and other features you'll love at an awesome price. And with Productivity you'll never get hit with extra fees since our software, manuals, tech support, and access to online resources are all completely FREE!



More PLC options to better satisfy your needs

Industrial automation needs vary from customer to customer or job site to job site. From the smallest simplest machine to the most complex plant-wide operation, we want the opportunity to serve each and every one. In order to meet the demands of this wide market while at the same time guaranteeing the utmost satisfaction, we've partnered with three well-respected companies in the automation technology field for our PLC product lines. Each company fully supports and is constantly improving their PLC offerings to not only meet ever-changing industry demands but also exceed customer expectations.

So, if you've never considered AutomationDirect for your controller needs, let us show you how price and performance can work hand-in-hand for a better customer experience.

Do more



Productivity Series



CLICK
Koyo



Recent Enhancements/ Additions to our PLC Families



The revolutionary Do-more DM1 technology was first introduced in the H2 CPU as a next-generation CPU option for the longstanding DL205 PLC line. The newest addition, the BRX PLC, is the first platform designed specifically, from the ground up, for the Do-more engine.



The Productivity1000 series PLC is the super-compact yet highly capable member of our Productivity controller family. Packed with many of the features you love about the Productivity series but housed in a smaller, slimmer package, this PLC adds greater scalability and savings to the Productivity controller line.



The CLICK Ethernet Analog PLC units come with built-in analog I/O and a 10/100 Mbps multipurpose Ethernet port for faster networking and control. These CLICK PLCs will easily integrate into existing networks and provide a simple, cost-effective solution for your application.



Know what you want to do but still not sure which PLC to use? Let us help.

When it comes to deciding which one of our PLCs is the one for your application, we want to help. Our online interactive PLC selector tool can help get you on the right path to the right PLC.

Simply choose the type and amount of I/O, the type of communication, and any hardware or software requirements. The tool will then display the suitable PLC families for your selections, along with overview videos, cost comparisons, and feature listings. Look for the "Need Help Choosing a PLC?" button towards the top right of our homepage to get started.

And don't forget, our tech support group is available at 1(800) 633-0405 to answer any questions you may have about the capabilities of our many PLC products.



GO! Online PLC selector:
<http://go2adc.com/select-plc>



CLICK PLCs are so simple and inexpensive...



**...you'll want to use
them everywhere.**

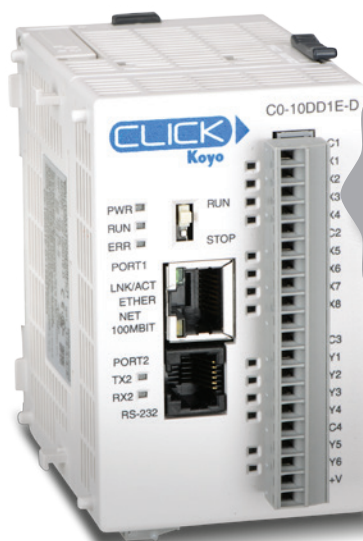
CLICK - The almost free PLC

The CLICK micro-brick PLC is undoubtedly the best PLC value in the industry. With basic models starting at just \$69.00 and FREE easy-to-use programming software, CLICK is by far the most practical PLC for the smallest of applications and the perfect tool for beginners.



“Have used this model Click in many small applications, and it has worked, reliably, for many years. We even talked some customers out of using “programmable relays” for they are not as versatile or as cost effective as this PLC.”

Todd in ONTARIO, CA



THE BEGINNER'S BEST FRIEND

GO! www.CLICKPLCs.com



**PLC units starting
at only \$69** (C0-00DD1-D)



Entirely Easy

With its unbeatable price, purchasing the CLICK PLC for small applications is an easy decision to make. Almost as easy as programming it once it arrives. The FREE CLICK PLC programming software was designed to provide straightforward, simplified programming in order to make CLICK easy to understand, easy to program, and easy to troubleshoot.

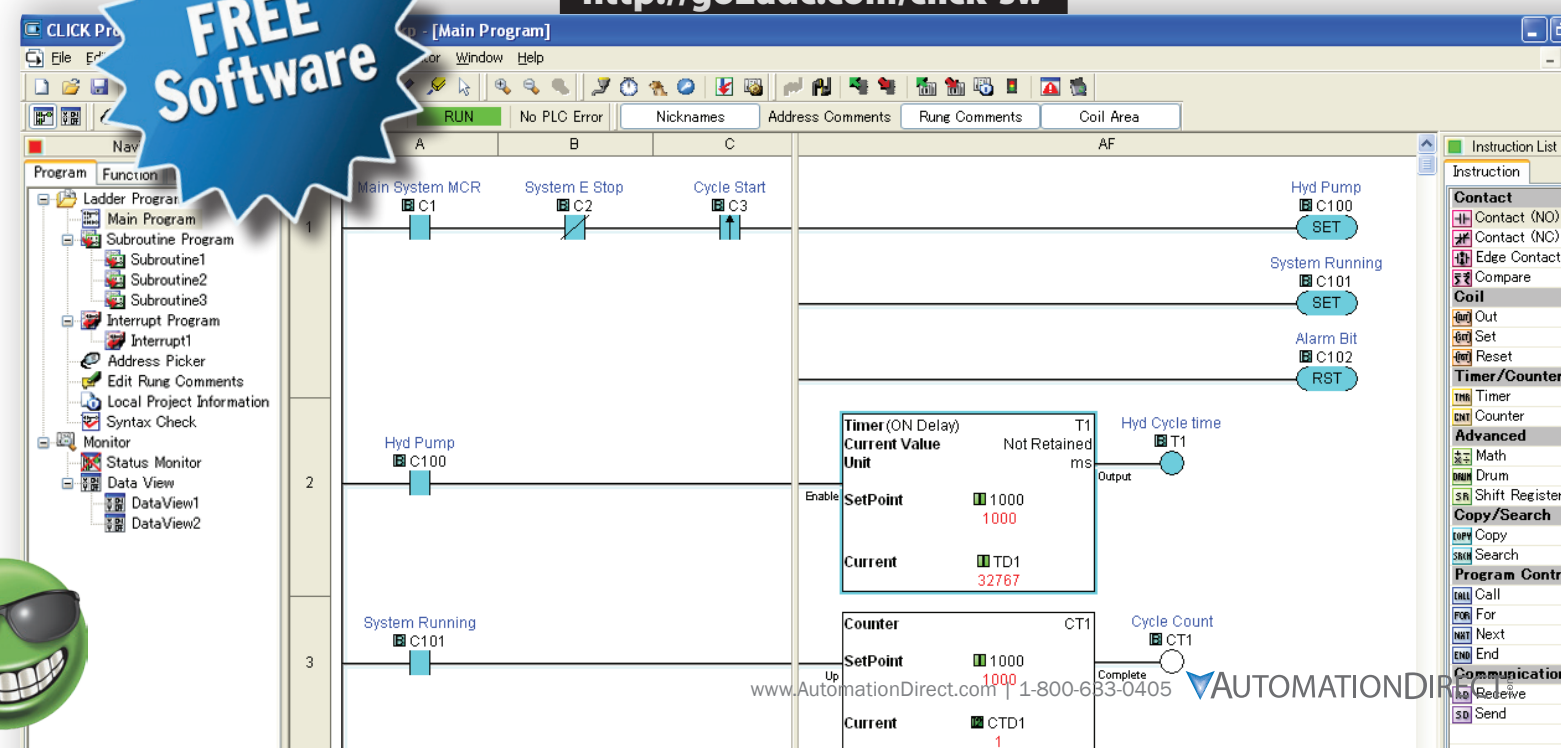
CLICK PLC family features:

- Stand-alone PLC units with built-in discrete or discrete/analog I/O
- Expandable with stackable I/O modules up to 142 discrete or 54 analog I/O points total
- Onboard communication (Ethernet and serial options)
- Micro size - approximately 2"(W) x 3"(H) x 3"(D)
- Removable terminal blocks for easy wiring
- Optional battery backup and real time clock/calendar
- FREE programming software with a simple but practical instruction set

GO

FREE CLICK PLC software:
<http://go2adc.com/click-sw>

FREE
Software



Most PLCs will do but only some will Do-more!

MASTER YOUR
CONTROL CHALLENGE
WITH THE POWER OF
DO-MORE!



"The Do-More PLC is one of the best I have worked on in over 15 years. I easily had my program written and tested (using the simulation in the software!) in very little time. The instruction set is one of the best in the market..."
Garry in TRENTON, ON

Do-more than ever before.

The ground-breaking Do-more! PLC control technology was developed to tackle both straightforward and complex applications in no time. This PLC series is loaded with hardware and software features (including the FREE simulator) that provide an extensive toolbox to satisfy even the most demanding projects.

One of the many benefits Do-more PLCs offer is device-centric programming. This programming method allows the user to configure software "devices" that act as liaisons between the ladder code and the hardware itself. For example, easily create a device to handle communication rates, timeouts, etc. all behind the scenes without any extra ladder programming. This feature along with the other efficiencies built into the Do-more platform, and the many tools it provides, will allow you to master any control challenge, big or small.

DO-more
DRIVEN

GO! FREE Do-more PLC software:
<http://go2adc.com/do-more-sw>

Full-featured hardware with FREE software that offers:

- Project simulator
- Added efficiency with device-centric programming and easy top-down configurations
- User-defined structure data types
- Support for tasks, programs, subroutines, and interrupt service routines (ISRs)
- Embedded video help
- Dashboard for easy navigation
- Complete program, data file and memory management
- Robust instruction set with custom motion profiles and Axis commands
- Modular, easily adaptable PID control loops
- Enhanced troubleshooting tools including Debug, Trend and PID views (with PID auto tune)
- Integrated project, communication and OS security
- Software selectable analog with auto-scaling
- Stage sequencing
- Much more...



Do-more! really packs a punch



Built using extensive software development expertise with customer feedback and over 25 years of PLC hardware design knowledge, these PLCs deliver advanced functionality at a budget-friendly price.

Here are a few of the many features available with the Do-more family of PLCs:

- High-performance processors
- Internal RAM and optional external microSD data storage (on select models)
- Ethernet, serial and USB communication available
- Onboard high-speed I/O (BRX series only)
- Hot-swappable communications port (BRX series only)
- FREE advanced programming software with powerful development tools



BRX

Do-more! BRX PLC platform

The latest Do-more edition, built exclusively for the Do-more engine. Available in four form factors with up to 36 I/O points built in.

Stand-alone PLC units starting at \$199

Expandable I/O starting at \$39

Direct
LOGIC **Koyo**

Do-more! H2 PLC platform

Using the DirectLOGIC industry-proven I/O hardware, this PLC series is incredibly powerful and an incredible bargain.

CPU starting at \$299

TERMINATOR
T1H

Do-more! T1H PLC platform

The compact T1H series control system combines the modular and space-saving package of our Terminator I/O line with a highly capable Do-more! CPU.

CPU starting at \$359



Find out all you need to know at: www.Do-morePLC.com

FREE software that's designed around YOU

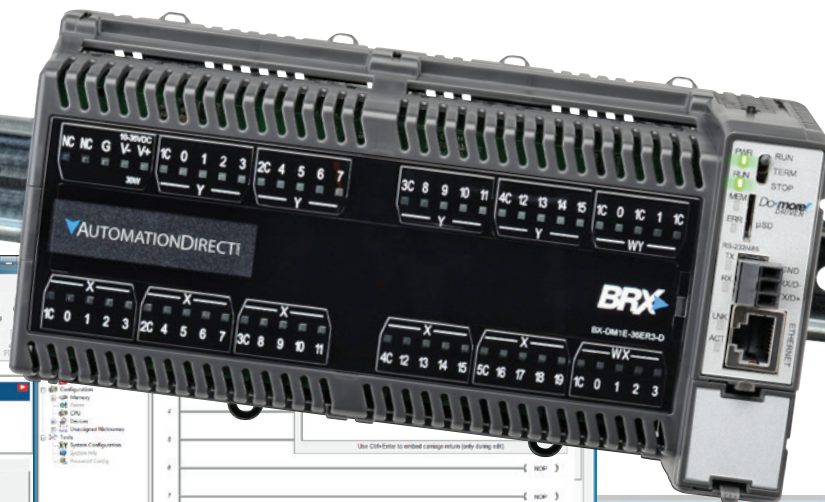
Your success is our success

At AutomationDirect, we aren't interested in squeezing every dollar we can out of your PLC purchase. We would much rather give you what you need to be successful with our products and in turn keep you coming back. That's why we never charge a dime for the Do-more Designer programming software. This software was designed to not only be easy to use but to provide the tools you need to get the most out of your Do-more! PLCs. We want you to be satisfied with your purchase, and paying extra for software just isn't that satisfying!

Download the fully-functional (not a demo) software at www.Do-morePLC.com and try it out. You'll be surprised at how robust FREE can be.

GO! FREE Do-more PLC software:
<http://go2adc.com/do-more-sw>

Do-more! DESIGNER 2.0



"The Do-More software is more user friendly than any I have ever used before. PID, Modbus communications, Filters etc... All very easy to use!"

SK in ENDERBY, BC

Let our instructional videos show you how

Enhanced video help is incorporated right into the instruction set of Do-more Designer. If you need assistance with an instruction, you can select the video icon (if available) to see a quick video explanation of how the instruction works and/or how it needs to be configured.

PEERLINK Share Data w/PLCs

When enabled, PEERLINK publishes its designated PL memory blocks, and subscribes to all remotely published blocks. In the list below, check any PL memory block(s) this PLC publishes

<input checked="" type="checkbox"/> Block 0: PL0-PL15	<input type="checkbox"/> Block 8: PL128-PL143
<input checked="" type="checkbox"/> Block 1: PL16-PL31	<input type="checkbox"/> Block 9: PL144-PL159
<input checked="" type="checkbox"/> Block 2: PL32-PL47	<input type="checkbox"/> Block 10: PL160-PL175
<input type="checkbox"/> Block 3: PL48-PL63	<input checked="" type="checkbox"/> Block 11: PL176-PL191
<input type="checkbox"/> Block 4: PL64-PL79	<input checked="" type="checkbox"/> Block 12: PL192-PL207
<input type="checkbox"/> Block 5: PL80-PL95	<input type="checkbox"/> Block 13: PL208-PL223
<input checked="" type="checkbox"/> Block 6: PL96-PL111	<input type="checkbox"/> Block 14: PL224-PL239
<input type="checkbox"/> Block 7: PL112-PL127	<input type="checkbox"/> Block 15: PL240-PL255

Timesaving Project Simulator

The integrated simulator provides virtual inputs, outputs and memory locations that you need to test your control program without the hardware connected. This can jumpstart your project development on the front end and reduce unexpected errors when the system goes live.

Think about that - you can test your program design before even ordering the hardware!

See all that Do-more Designer has to offer:

GO! www.Do-morePLC.com

No Frustration Navigation

The Do-more Designer software is jam-packed with features and includes an intuitive software interface to make finding your way around easier than ever. The System Dashboard gives you real time project status such as enabled interrupts and used program memory percentage. It also provides interactive graphics and links that will take you directly to the feature you need to get the job done.



Productivity PLCs - value engineered to perform

BREAK FREE
FROM A-B!

Productivity[®]Series

Are you ready to make the switch?

Let's face it, Allen-Bradley has been around for a long time and while they do offer many advanced control solutions, many times it's simply overkill and overpriced for the job at hand. For those times, many have found the high-value, high-performance Productivity Series of controllers to be a suitable replacement. Not only do Productivity series PLCs provide the needed tag name based functionality, along with many other features, they also come with the hassle-free support A-B customers are desperately looking for.



"We are an OEM, and in the past used the Allen-Bradley Compactlogix platform for our higher end equipment. We think we have found its replacement...The idea of a low cost controller, with all the available communication ports is a big plus for us. We really like, and prefer, the tag based programming utilized by this unit. We typically use drives to control conveyors running to our machinery, and the fact that the drive communication, and variables are on-board is fantastic... We think this one is a winner!"
Todd in ONTARIO, CA

Here are just some reasons to consider the Productivity series:

- Numerous onboard communication ports to meet in-house and on-site network requirements
- High-contrast OLED/LCD displays provide accurate process variable data as well as system diagnostics in real time - No meter required! (P2000/P3000 only)
- Convenient QR codes link customers to needed documents in an instant (P1000/P2000 only)
- Auto-discovered VFDs with configurable and saveable parameters (P2000/P3000 only)
- Binary-only USB transfers to the CPU keep proprietary code secure and allow for added convenience with project downloads (P2000/P3000 only)
- Access to remote installations using integrated web server and/or mobile app
- Embedded OPC support for easy customer database communication
- Hot-swappable I/O for easy hardware changes on-the-fly (P2000/P3000 only)
- Scalable product offering from large control systems with thousands of I/O and high demand applications (speed, communications, expandability) to simple, low cost, space-saving stackable I/O platforms
- FREE tag name based programming software for utmost programming flexibility
- FREE award-winning technical support for the life of the product
- FREE access to online resources (forums, upgrades, FAQ's, advisories, etc.)



Increase your productivity in more ways than one



Whether you are a machine builder, systems integrator or anyone in need of a high-performance, low-cost controls solution, the Productivity family of controllers can deliver. Built to go above and beyond, these controllers offer many advanced features that provide easy programming, multiple networking solutions and faster troubleshooting.

Here are a few more of the many benefits you get with Productivity:

- High-performance CPUs with expansive 50MB memory
- 32GB of microSD data logging
- Unmatched built-in communications capabilities, including local and remote I/O ports (P2000/P3000 only), EtherNet/IP and networking
- Built-in Ethernet port allows for HMI and peer-to-peer or business system networking (no Ethernet communications module needed)
- Modular rack-based or stackable footprint with many discrete and analog I/O option modules, scalable up to 59K+ I/O
- Configurable hot-swappable I/O (P2000/P3000 only)
- Plug-and-play USB programming
- Advanced "fill-in-the-blank" instructions for utmost ease of use
- Tag name programming with pre-defined structure data types
- And so much more...



See what Productivity can do for you at: www.ProductivityPLC.com

Fast Programming with FREE software

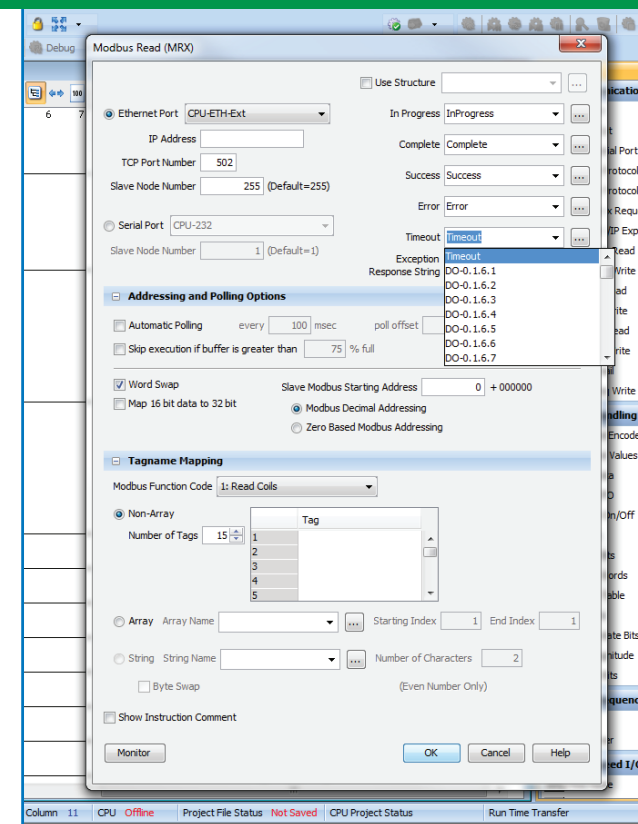
**FREE
Software**

Productivity Suite

Developed inhouse with customer feedback

Productivity Suite is our free programming software for the Productivity family of controllers. Our own software engineers developed this programming package at our headquarters near Atlanta, Ga. It was designed with input from our technical service team who communicate on a daily basis with our customers.

As a result, Productivity Suite not only meets but exceeds the needs of our customers, and provides a quick, user-friendly way to efficiently program the Productivity family of PLCs.



Pre-defined Structures make programming automatic

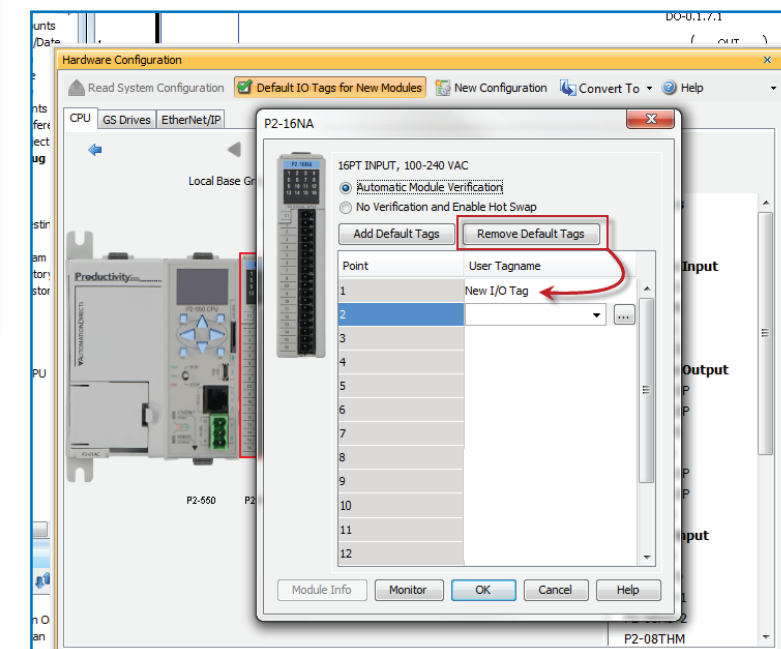
Take the work out of tag creation. With instructions requiring multiple tags, Productivity Suite offers pre-configured tag structures. Simply give the instruction a common tag name and the defined suffixes will be added automatically.

Convenient fill-in-the-blank style function blocks

Math, PID, array, communication, data handling, high speed and application function blocks are available and easily configured with user-friendly selections.

Tag I/O Reassignment saves you time, and time is money

Start programming now! Tag I/O reassignment allows you the freedom to develop your code now and assign your I/O later. Create your user tags offline and swap them out for the default tags once the hardware is available.



Program your way! Tag name based control that's powerful and easy to use

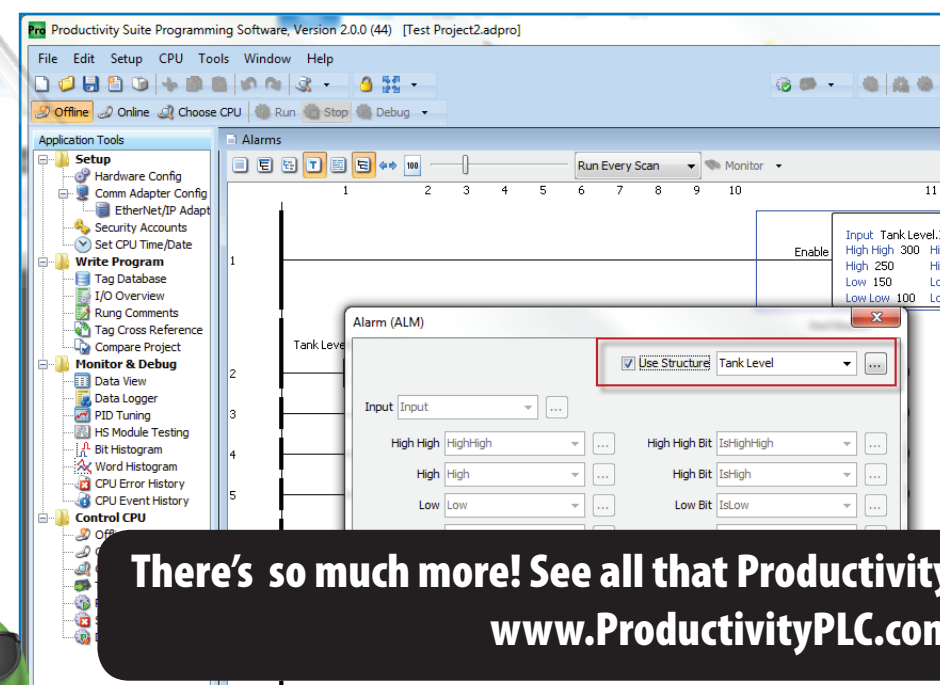
With Productivity Suite you have the freedom to define user tags with no limits or fixed boundaries. Configure timers, counters, integer words or any other data types you need. With tag name based programming, there are no pre-defined, fixed memory maps and no wasted, unused memory allocations.

Tag name based control also offers the ability to descriptively identify the control elements in your program. Older, fixed memory controllers force the use of pre-defined nomenclature for the data types. Which would you rather see when troubleshooting: T4:01 or Oven1 Purge Timer.Pre? The tag name helps identify the element as a numeric value for the oven purge timer's preset, making its purpose immediately clear.



Productivity Suite

**ONE SOFTWARE PACKAGE
PROGRAMS ALL
PRODUCTIVITY PLCS!**



**There's so much more! See all that Productivity Suite has to offer at:
www.ProductivityPLC.com**



**"Unbelievable performance and ease of use. Tag based addressing is wonderful..."
Matt in SPRINGFIELD, MO**

**GO! FREE Productivity Suite PLC software:
<http://go2adc.com/psuite-sw>**



If it's in your cabinet it's online at AutomationDirect.com . . . for less!

Programmable Controllers

Programmable controllers have become the primary automation method for many industries, and applications, providing accurate, reliable, easily modified control. In addition to discrete and process functions, PLCs have evolved to perform complex tasks such as motion, data logging, web server access and email.

GO! <http://go2adc.com/plc-ps>

- Productivity1000 micro-modular PLCs
- Productivity2000 micro-modular PLCs
- Productivity3000 modular PLCs
- Do-more BRX, H2 and T1H series PLCs
- CLICK micro brick PLCs
- Numerous I/O expansion modules available including discrete, analog, temperature and high-speed (depending on model)
- Think & Do PC control software
- DirectLOGIC components still available for maintaining legacy systems.

AC and DC Drives

Electrical drives control the speed, torque and direction of a downstream device, most typically a motor. Variable frequency drives (VFD) provide speed control for AC motors such as those in conveyors, fans, pumps and shop tools. DC drives provide variable speed control for DC motors, ideal for applications requiring low speed control, torque and power.

- DURAPULSE variable frequency AC drives up to 300 hp
- IronHorse DC drives up to 3 hp
- Cost-effective GS series VFDs up to 10 hp
- Drive accessories
- Soft starters up to 480A

GO! <http://go2adc.com/drives-ps>



Software

Easily configure your system components with our user-friendly software packages. Most of our software is available for free download including PLC programming software, Micro HMI programming software, GS drive configuration software and many others. Our software provides the tools you need to get your system up and running fast.

- Free PLC programming software (download)
- System configuration
- Free motion control software (download)
- OPC server software
- Free Micro HMI programming software (download)

GO! <http://go2adc.com/software-ps>



CPU and I/O Comparison	AutomationDirect CLICK	AutomationDirect Do-more! (BRX)	AutomationDirect Productivity2000	Allen-Bradley CompactLogix
Base (if required)	N/A	N/A	\$69.00 P2-04B	N/A
Power Supply	\$39.00 CO-01AC	N/A	\$69.00 P2-01AC	\$508.00 1769-P4A
CPU	\$139.00 CO-10ARE-D (Ethernet built in)	\$489.00 BX-DM1E-36ER3 (Ethernet built in)	\$255.00 P2-550 (Ethernet built in)	\$7,600.00 1768-L45 (Serial port only)
16 AC Inputs	\$40.00 CO-08NA (8-point AC Input)*	\$60.00 BX-16NA	\$105.00 P2-16NA	\$317.00 1769-IA16
16 24VDC Inputs	\$45.00 CO-16ND3	\$0.00 Included with CPU	\$69.00 P2-16NE3	\$270.00 1769-IQ16
8 Relay Outputs	\$40.00 CO-08TR	\$0.00 Included with CPU	\$51.00 P2-08TRS	\$327.00 1769-OW8I
8 Analog Input Channels (mA)	\$89.00 x 2 (2) CO-04AD-1	\$187.00 BX-08AD-1	\$199.00 P2-08AD-1	\$873.00 1769-IF8
Total System Price	\$481.00	\$736.00	\$817.00	\$9,895.00

*CO-08NA used in conjunction with eight AC inputs on CPU gives the 16 points needed.
All prices are U.S. published prices. AutomationDirect prices are as of 12/15/2017. Allen-Bradley prices taken from www.ab.com as of 12/15/2017.

HMI/Operator Interface

The HMI (Human Machine Interface) provides a textual or graphical view of system conditions and operations, vital information absent with simple pushbutton panels or switch banks. HMIs offer robust monitoring, control, status reporting and many other functions.

- C-more operator interface HMI touch panels in various sizes up to 15 inches with widescreen options available
- C-more Micro-graphic text and touch panels - 3, 4, and 6-inch models available starting at only \$98
- ViewMarq LED message displays
- Point of View SCADA/HMI software
- ATLAS industrial monitors

GO! <http://go2adc.com/hmi-ps>



Kelsey in WYOMISSING, PA wrote:

"We've been using Automation Direct for years and will continue to do so. Good selection of products and customer service. Quick shipping, never have any problems. A++ service"



Universal Field I/O

For controller installations where end devices are located long distances away, field I/O or distributed I/O systems can greatly improve system efficiency and reduce wiring costs. Localizing field terminations at the machine or device being monitored/controlled allows for easier installations/modifications, shorter wire runs, and faster troubleshooting.

Distributed I/O with Modbus TCP, EtherNet/IP, Modbus RTU, DeviceNET and Profibus support

GO! <http://go2adc.com/fieldio-ps>





Process Control and Measurement

Process measurement and control implies continuously changing variable data and/or control methods in an industrial process. Different from discrete (ON/OFF) states, numeric values over a set range are sensed or transmitted in continuous (flow production) or batch (a set quantity or output) processing. Flow, level and temperature are common process variables.

- Temperature controllers
- Digital panel meters
- Temperature sensors and transmitters
- Pressure sensors and gauges
- Level sensors and controllers
- Flow sensors
- Signal conditioners
- Pipeline valves
- Current to pneumatic (I/P) transducers
- Timer relays, counters and tachometers

GO! <http://go2adc.com/process-ps>

Discrete and Analog Sensing

Available sensors include rotary encoders for detecting position and speed; sensors for detecting proximity, pressure, temperature, level, flow, current and voltage; and limit switches for detecting presence or end-of-travel limits. With discrete or analog outputs, these sensors can provide data critical to automating any machine or process.

- Proximity sensors
- Photoelectric sensors
- Limit switches
- Precision limit switches
- NEMA limit switches
- Laser sensors
- Color and contrast sensors
- Area sensors
- Encoders
- Current and voltage sensors
- Pressure sensors and gauges
- Temperature sensors, switches, transmitters and thermometers
- Liquid level sensors
- Flow sensors
- Ultrasonic sensors
- Fork sensors

GO! <http://go2adc.com/sensors-ps>

Motors and Motor Controls

Motors are the power transmission workhorse of industry, converting electrical energy into mechanical movement. Selecting an AC motor or DC motor for an application depends on considerations such as power, speed control, cost and ease of maintenance.

For every motor, some form of electrical control is required, from simple ON/OFF to more complex variable speed applications. Motor control devices encompass simple manual controllers, motor contactors and starters, drives and soft starters.

- IronHorse general purpose AC motors up to 300 hp
- AC stainless steel motors
- DC motors up to 2 hp
- Marathon inverter duty AC motors up to 100 hp
- Compressor duty AC motors up to 5 hp
- Motor controls and contactors up to 300 hp

GO! Motors: <http://go2adc.com/motors-ps>
Motor controls: <http://go2adc.com/mc-ps>

Proximity Sensors

	AutomationDirect Price/Part Number	VS.	Allen-Bradley Price/Part Number
5 mm three-wire DC prox with pico Q/D	\$41.00 PD1-AP-1F		\$169.00 871C-D1NP5-P3
8 mm three-wire DC prox with pico Q/D	\$21.00 AE1-AN-2F		\$100.29 872C-D3NN8-P3
12 mm two-wire DC shielded prox with 2 m cable	\$22.00 AM1-A0-2A		\$87.11 872C-D3NE12-A2
18 mm shielded AC prox with 2 m cable	\$31.00 VK1-A0-1B		\$122.89 872C-A5N18-A2

Q/D = quick disconnect

*All prices are U.S. published prices. AutomationDirect prices as of 12/13/2017. Allen-Bradley prices are taken from www.wernerlelectric.com 4/20/2017. Prices may vary by dealer. Many other part numbers are available from all vendors.



Voted #1 mid-size company to work for in Atlanta:
www.automationdirect.com/workplace

What our current customers think:
www.automationdirect.com/reviews

Servo Systems

	AutomationDirect Price/Part Number	VS.	Allen-Bradley Price/Part Number
Digital Servo Drive	\$488.00 SVA-2040		\$1,790.00 2098-DSD-005
100W Servo Motor with connectorized Leads	\$325.00 SVL-201		\$584.00 TLY-A130T-HK62AA
Breakout Board Kit for CN1 Control Interface	\$79.00 ZL-SVC-CBL50 + ZL-RTB50		\$268.00 2090-U3BK-D4401
10' Motor Feedback Cable	\$49.50 SVC-EFL-010		\$91.80 2090-CFBM60F-CBA003
10' Motor Power Cable	\$29.50 SVC-PFL-010		\$103.00 2090-CPBM60F-16AA03
Configuration Software	FREE SV-PRO*		\$75.00 2098-UWVPRG

*SureServo Pro software is FREE when downloaded and is also available for \$9.00 on a CD

Complete 1-axis 100W System **\$971.00** **\$2,911.80**

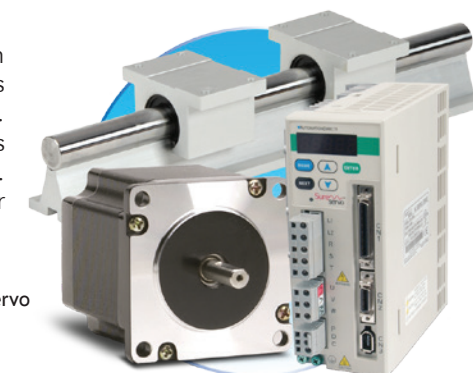
All prices are U.S. list prices. AutomationDirect prices as of 12/13/2017. The Allen-Bradley 100W system consists of part numbers shown in table above with prices from www.wernerlelectric.com, www.todaycomponents.com 4/20/2017.

Motion Control

Motion control typically refers to systems with accurate position/velocity/torque capabilities operating in either open or closed loop mode. Open loop stepping drives send motion commands to stepper motors, but receive no information about the result. Closed loop servo systems have feedback devices at the motor shaft to verify or adjust the resulting motion.

- SureStep drives and NEMA motors
- SureServo drives and motors, up to 3kW
- Encoders
- Linear slides
- Stepper and servo gearboxes

GO! <http://go2adc.com/motion-ps>



Jason in PARAGOUL, AR wrote:

"Automation Direct is my #1 source for all of my companies automation needs. You just simply can't beat their cost and quality! Pair that with excellent customer service and it makes an unbeatable combination. Way to go Automation Direct!"





Pneumatics

Pneumatic systems are used extensively in industrial automation and are usually powered by compressed air. Pneumatic systems use actuators such as cylinders that are typically controlled via manual, air-pilot, or solenoid valves, and are designed in when they can provide a lower cost, more flexible, or safer alternative to electric actuators.

- Tubing, hose and fittings in a wide variety of configurations
- Air cylinders and position switch
- Solenoid valves
- Modular solenoid valves (Ethernet or hard wire)
- Air preparation and air relief valves
- Total Air Prep (TAP) all-in-one units
- Rotary actuators and grippers
- Pressure switches, transmitters, and transducers

GO! <http://go2adc.com/pneumatics-ps>



Pushbuttons, Switches and Lights

Pilot devices are an integral part of most automated processes, from simple pushbuttons and indicating lights, to selector switches, foot switches, and visual/audible signal devices. A wide selection of 22mm and 30mm panel-mount devices is available; hazardous location control stations meet environmental listings; signal devices offer a variety of mounting options.

- Killark hazardous location control stations
- IDEM emergency stops
- Fuji, Schmersal and Eaton metal/plastic 22 and 30mm pilot devices
- IP69K-rated selector switches, pilot devices and pushbuttons from Schmersal
- WERMA audible devices and visual signals
- WERMA and Patlite stacklights
- Foot switches
- IP69K-Rated selector switches, pilot devices and pushbuttons from Schmersal

GO! For pilot devices <http://go2adc.com/pilot-ps>
For stacklights <http://go2adc.com/stacklights-ps>



Communications

Communication is a vital component of any modern control system application. Take advantage of that capability with low-priced, highly-reliable communication products such as secure VPN routers, managed/unmanaged Ethernet switches, media converters and Ethernet cables. Serial converters and gateways complete links to simpler systems that may already be in place.

- Industrial managed and unmanaged Ethernet switches
- Modbus gateways
- Network adapters/converters
- Ethernet cables
- VPN routers and cloud services for secure remote access
- Power over Ethernet (PoE) switches

GO! <http://go2adc.com/comm-ps>



Robert in QUALITY, KY wrote:

"I have never had a problem with any of ADC's products. The price and availability of their product line is not matched anywhere that I have found. Their PLC line as well as other automation products are on a par with anything I have found on the market in the same price range and provide a cost effective alternative to the old industry standards that are much more expensive. The only reason I go anywhere else is if they don't have the specific item I am looking for, and that is a very rare occurrence."

Water (Potable) Components

Potable water components are designed for use in plumbing, routing, and dispensing of drinking water and other beverages. All materials that come into contact with the subject media are food grade, and most components have National Sanitary Foundation (NSF International) certifications.

- Regulators
- Solenoid valves
- Hand valves
- Check valves
- Push-to-connect water fittings
- Lead-free brass fittings
- Tubing
- Hose
- Hose clamps

GO! <http://go2adc.com/water-ps>



Pneumatic Cylinders

AutomationDirect
NITRA

VS.

MSC
Norgren

McMaster-Carr

Non-repairable Air Cylinder

2 inch bore, 4 inch stroke, double acting, pivot/double end mount

\$64.00

A32040DD



\$130.74

36697563



\$93.36

6498K478



Non-repairable Air Cylinder

3/4 inch bore, 1 inch stroke, single acting spring return, nose mount

\$13.00

A12010SN



\$25.22

36696458



\$18.50

6498K141



Non-repairable Air Cylinder

1-1/16 inch bore, 6 inch stroke, double acting, pivot/double end mount

\$29.50

A17060DP



\$63.43

36696847



\$45.50

6498K658



All prices are U.S. published prices. Many other part numbers are available from all vendors. AutomationDirect prices as of 12/13/2017. Norgren prices are from www.msccdirect.com 5/2/2017. McMaster-Carr prices are from www.mcmaster.com 5/2/2017. Prices subject to change without notice.



Circuit Protection

Circuit protection is a critical part of any industrial or commercial installation, to meet national codes and protect equipment and processes from excess energy that could cause damage or safety issues. An extensive selection of circuit breakers, supplementary protectors, fuses and holders, and disconnect switches is available, many complying with UL 98, UL 508, and UL 489 standards.

- Eaton UL 489 miniature circuit breakers
- Eaton UL1077 supplementary protectors
- Socomec, Gladiator and Bryant disconnect switches
- Fuji UL 489 molded case circuit breakers
- Edison fuses, fuse holders and fuse blocks
- Bryant UL 508 manual motor controllers

GO! <http://go2adc.com/circpro-ps>

YouTube



Paul in TWINSBURG, OH wrote:

"I have received many ecommerce products and this company is my favorite. Web site is quick and easy to navigate, on-time delivery and great schematic details and don't forget competitive prices. All around *Five Star*"



Power Products

Electrical power products provide safe and efficient power services for industrial and commercial use, and include power transformers, DC power supplies and converters, power distribution blocks, wiring devices, power entry modules, power line filters, surge protectors and panel interface connectors.

- Acme, Hammond and Jefferson Electric transformers
- Rhino DC power supplies and converters
- Mersen Surge Protectors
- Roxburgh and Eaton line filters and surge protectors
- Roxburgh power outlets
- ACME encapsulated transformers
- Edison power distribution blocks
- Bryant electrical plugs, connectors and receptacles, and other wiring devices
- AcuAmp AC current transformers

GO! <http://go2adc.com/power-ps>



Fuses

AutomationDirect
Price/Part Number

VS.

Littlefuse
Price/Part Number

Class CC current limiting time-delay 10A, 600 VAC

\$9.00
HCTR10



\$25.72
KLDR10



Midget Class M time-delay 2A, 250 VAC

\$2.90
MEN2



\$12.54
FLM002



(Sold in packages, prices shown are per piece) All fuses are 13/32" x 1-1/2".

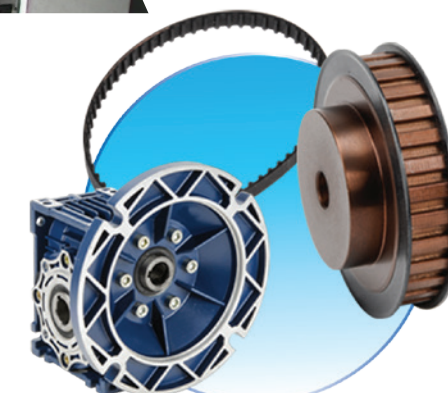
All prices are U.S. published prices. AutomationDirect prices as of 12/13/2017. Prices and specifications may vary by dealer. Littlefuse prices are from <http://www.newark.com> 12/13/2017. Prices subject to change without notice.

Power Transmission

Power transmission products are used in mechanical drivetrains to create movement. Components include linear motion slides and actuators, gearboxes, timing belts/pulleys/bushings, and a host of shaft couplings, bore reducers, and other purely mechanical devices.

- Worm gearboxes
- Precision gearboxes
- Timing belts and pulleys
- Helical gearboxes
- Shaft mount gearboxes
- Couplings and bushings

GO! <http://go2adc.com/ptrans-ps>



Tools and Test Equipment

The world's most trusted tool brands help you perform electrical wiring and mechanical installation tasks easily and reliably. Hand tools include Wera screwdrivers, torque tools, wrenches and ratchets; Knipex pliers, stripping and crimping tools; and RUKO cutting tools. Test equipment includes SHIMPO tachometers and stroboscopes for analysis of mechanical motion.

- Wera screwdrivers and torque tools
- Wera wrenches, ratchets and sockets
- Knipex pliers, stripping and crimping tools
- Cable tie tools
- Hole cutting tools
- RUKO grinders and burrs
- SHIMPO handheld tachometers and stroboscopes
- SapiSelco wire ties

GO! <http://go2adc.com/tools-ps>



Enclosures

Enclosures house and protect electrical components and wiring in a wide variety of environments, where NEMA rating standards define the degree and type of protection. Electrical equipment can be further protected using enclosure thermal management to extend interior component life. Lighting and other accessories accommodate special installation needs.

- Over 2,400 NEMA rated enclosures to choose from
- NEMA rated stainless steel, aluminum, carbon steel and fiberglass Hubbell-Wiegmann enclosures
- NEMA rated polycarbonate enclosures from Integra
- Custom cut-out enclosures
- Heating, cooling and climate control
- Lighting

GO! <http://go2adc.com/enc-ps>

Safety

Even the simplest process should be in compliance with national and international standards, and now it is affordable to get reliability and high performance for maximum machine safety. These certified machine safety components meet equipment and personnel protection needs, including safety switches, safety light curtains and safety relays.

- Magnetic safety switches
- Magnetic coded safety switches
- RFID coded safety switches
- Light curtains
- Safety relays
- Trapped key interlocks
- Personal protective equipment
- Safety mats and edges

GO! <http://go2adc.com/safety-ps>



Enclosures

	AutomationDirect Hubbell/Wiegmann Price/Part Number	VS.	Hoffman Price/Part Number
NEMA 1 wall mount 24 x 24 x 08"	\$188.00 N1C242408LP		\$327.00 A-24N24BLP
NEMA 12 wall mount 20 x 16 x 08"	\$253.00 N12201608		\$465.00 A-201608LP
NEMA 12 free-standing mount 60 x 60 x 12"	\$1,495.00 N12606012		\$2,582.51 A-606012LP
NEMA 4 wall mount 20 x 20 x 06"	\$328.00 N4202006		\$603.13 A-20H20ALP
NEMA 4X wall mount 20 x 20 x 06"	\$784.00 SSN4202006		\$1,374.70 A-20H2006SSLP
NEMA 4/12 wall mount 36 x 24 x 08"	\$327.00 N412362408C		\$604.00 C-SD36248

*All prices are U.S. published prices. AutomationDirect prices as of 12/13/2017. Hoffman prices are taken from www.newark.com 12/13/2017. Prices may vary by dealer. Many other part numbers are available from all vendors.

Terminal Blocks and Wiring

Wiring solutions supply the electrical connections needed to build, upgrade or maintain electrical panels/enclosures and industrial systems. A variety of modular terminal blocks, power distribution blocks, multi-port junction blocks and pre-wired connection cables and modules are available to make quick, clean, safe and efficient installations. Also available is wire in multiple varieties pre-cut in length or in bulk.

- Electrical hook-up wire / building wire
- Multi-conductor control, instrumentation and communication cable
- Flexing Cat5e Ethernet cables
- Flexing multi-conductor control cable
- Konnect-It and DINnectors terminal block systems
- Edison power distribution blocks
- Bryant power wiring devices
- Wire duct and tubing
- Wire end connectors
- Cable glands, connectors and fittings
- ZIPport connectors
- Portable cord
- Multi-wire connectors
- Sensor cables
- General, latching, UV resistant, releasable, mounting head, identification, and metal detectable cable ties

GO! Terminal blocks: <http://go2adc.com/tb-ps>
Wiring: <http://go2adc.com/wire-ps>



Relays and Timers

Relays have been the traditional building blocks of control since the 1950s. Still in wide use for simple control or power conversion, styles include electro-mechanical general or special purpose relays such as high power or hazardous location styles, as well as solid-state relays.

- Electro-mechanical relays
- Solid state relays
- IDEM viper relays
- Relay sockets and accessories
- Timer relays
- Counters
- Tachometers
- Motor control relays

GO! <http://go2adc.com/relays-ps>



Shop online at www.AutomationDirect.com . . .



- **It's easy to find what you need**
- **Get a quote in seconds**
- **Secure server**
- **Order using your form of payment**
We accept approved purchase orders, major credit cards (MasterCard, Amex, Discover, VISA), and PayPal.
- **Automatic e-mail order confirmation**
- **Order tracking**
- **Web site help**
Unlike some other e-commerce companies, be assured that you can contact us if you need help using our Web site. Call 1-800-633-0405, or email us at store@automationdirect.com with questions. Also, a library of "Help videos" and helpful links are under the "Site Help" tab of our site.
- **Take the entire catalog with you**
Our entire set of printed catalogs are also online in searchable PDF format and you can download it to view it anywhere you want. www.AutomationDirect.com/PDFcatalog

Need help choosing the correct part for your next project?
We can help: we have online product selectors for many product families

Online Selector Tools



PLC Selector

Gear Box Selector

GO! <http://go2adc.com/choose-ps>



Servo Selector



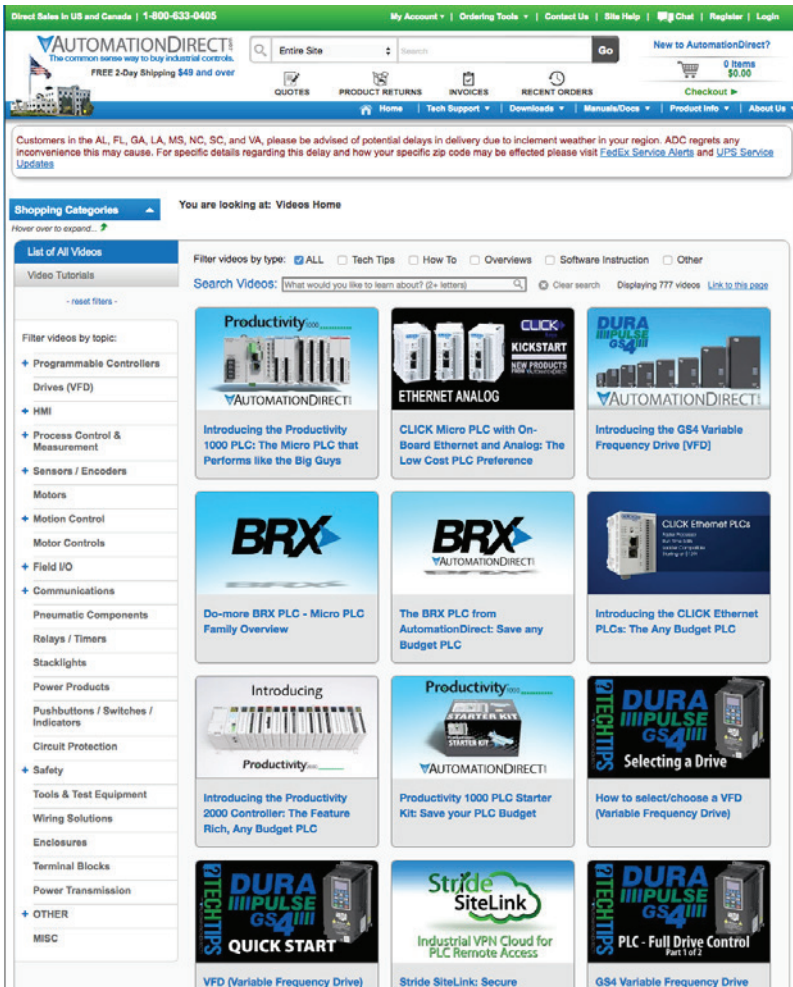
System	Motor	Gearbox	Ratio	Torque (N-m)	Speed (RPM)	Price*
	Part	Part		Nom. Max.	Nom. Max.	
Series	SVL-201	PG0501-05A1	5	1.52 4.51	600 1000	\$722 \$971
Series	SVL-201	PG1001-05A1	5	1.52 4.51	600 1000	\$398 \$971
Series	SVL-201	PG1001-05A1	5	1.52 4.51	600 1000	\$398 \$971
Series	SVL-201	PG1001-05A1	5	1.49 4.42	600 1000	\$674 \$971
Series	SVL-201	PG1001-05A1	5	1.49 4.42	600 1000	\$674 \$971



Hundreds of FREE videos one click away!

<http://go2adc.com/videos-ps>

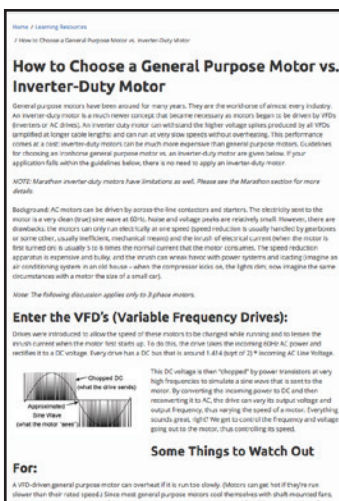
At AutomationDirect we believe in helping our current and future customers learn about our products in a way that is easy and quick. With hundreds of topics to choose from, our video library helps you learn at your own pace.



Learn more at our FREE online library

<http://go2adc.com/library-ps>

Within our FREE online library you can learn about any number of topics, download FREE e-books, peruse the latest edition of AutomationNotebook magazine (an industry favorite for over a decade) or sign up for our FREE newsletter. The library is packed with all sorts of articles and application stories that are sure to peak the interest of anyone in the industry.



Get Social with AutomationDirect



Hang out with us on Google+

<https://plus.google.com/+automationdirect>



Join us on LinkedIn

<https://www.linkedin.com/company/automationdirect>



Like us on Facebook

<https://www.facebook.com/AutomationDirect>



Follow us on Twitter

<https://twitter.com/AutomationDirect>

Below is just a small sample of all the great reviews we have received. Thanks for the feedback and keep the reviews coming!

**On 11/28/17 Jeff in
SHERMAN, NY wrote :**

Love the products! Productivity PLC lines are awesome, Dura Pulse VFDs are awesome. Great prices on everything.

**On 11/18/17 Richard in
OAKLAND, MD wrote :**

Wide variety of product lines. Prices very competitive. Very quick order processing and delivery. High quality products.

**On 11/16/17 Robert in
DIXON, CA wrote :**

Wow, can't say enough about how good the service and support is with Automation Direct. Shipping is super fast and parts are great quality!

**On 11/13/17 Garry in
TRENTON, ON wrote :**

Great product with little investment. The best support staff the I've seen in a long time.

**On 10/25/17 William
in DAYTONA BEACH, FL
wrote :**

A winner never stops running, says "this is good enough". Automation Direct certainly does not. Always trying to improve, expand the product line, and just when I think they've gone about as far as they can, they prove that they haven't. Keep on going! I love you people!

**On 10/16/17 Gary in
STOCKTON, CA wrote :**

With recent additions to the products portfolio, I have been able to economically provide automation control solutions for various applications. I'm extremely happy with the sensors and controller solutions I have been using.

**On 10/11/17 Doug in
GLASGOW, KY wrote :**

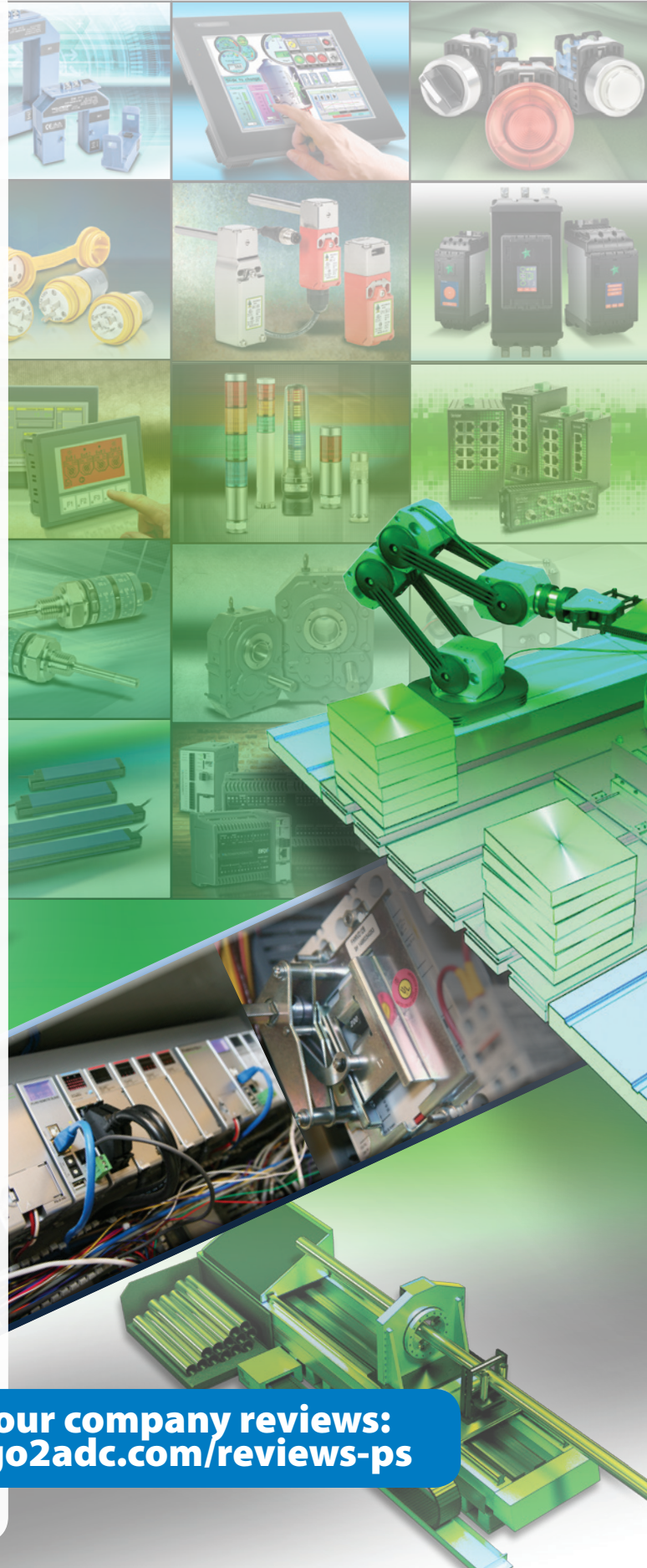
AutomationDirect has become a valuable resource to our printing facility. They offer very good quality products that are reliable, well built, and generally MUCH less expensive than the comparable "name-brands". Their product lines continue to expand and we are enjoying the benefits! I would (and DO!) recommend AutomationDirect to anyone in industry who needs quality, dependable equipment at extremely reasonable prices. And if there ever is a problem with a product (and there will always be a problem now and then with ANYONE's product), AutomationDirect always takes care of it ASAP.

**On 8/28/17 Kimberly in
TRYON, NC wrote :**

Automation Direct has just the items I am looking for when parts for our automated machines need repair. The product is of good quality for a great price and ships very quickly! Although we only found them a couple of years ago they have become a "go to" in my purchasing "bag"!

**On 8/23/17 Edward in
WESSINGTON SPRINGS,
SD wrote :**

ADC has been my go to place for automation and other supplies for more than 10 years, their support is second to none and would recommend to others !!
GREAT TEAM !!



GO!

**See all our company reviews:
<http://go2adc.com/reviews-ps>**