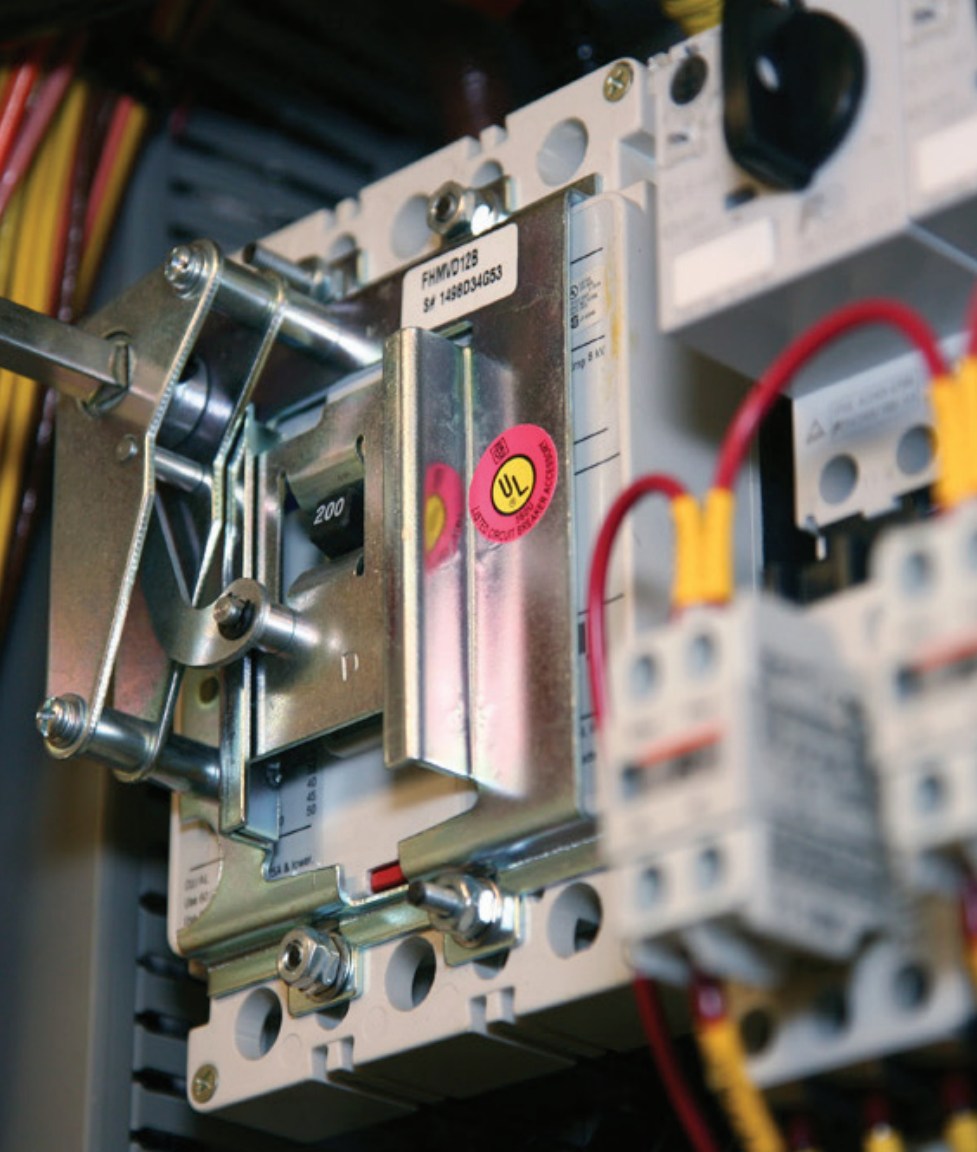




**GET MORE THAN
YOU PAY FOR...**

from **AUTOMATIONDIRECT**.com

Product Focus: Circuit Protection



What is Circuit Protection?

Circuit protection safeguards people, equipment, and facilities by detecting overcurrent conditions and opening the circuit before damage or injury occurs. It is fundamental to every electrical or control panel, which typically includes incoming power, internal distribution, and outgoing field circuits. Proper overcurrent protection devices (OCPDs) and good design practice are key to safe, reliable systems. Designers select compliant devices, place them in suitable enclosures, size conductors and OCPDs to the loads, and verify short circuit current ratings so equipment can withstand and interrupt available fault current. Widely adopted codes and standards guide these choices, including NFPA 70 (NEC), UL 508A for industrial control panels, and IEC 61439 for low voltage assemblies. This overview highlights practical methods and products that help create compliant, safe, and robust designs.

Common Causes of Electrical Problems

When designing, updating, or modifying a system or industrial machine, it is extremely important to understand the overall electrical system. You may want to add equipment and assume that all you need is to have the electrical power source available and simply add wiring to connect to this addition. However, it is critical to know if adding this load will overtax the system and create problems. Knowing the voltage, amperage and any other requirements ensures that your new design or modification can handle the load and operate efficiently.

Many common issues in electrical systems can be addressed with practical measures:

- **Power quality events:** Arc flash faults, surges, sags, spikes, harmonics, and EMI/RF noise can upset or damage sensitive devices; mitigate with surge protective devices, line/load reactors, filters, and power monitoring.
- **Overloads and faults:** Added loads or misapplied devices can exceed ratings; size OCPDs and conductors correctly and verify SCCR/interrupting ratings.
- **Inadequate disconnecting means:** Provide lockable, within-sight disconnects so power can be safely removed for service.
- **Motor inrush and coordination:** Choose protection that tolerates starting current but trips on true overloads; combine short circuit protection, controllers, and overload relays.

Design Considerations and Preventive Measures

- **Distribution & wiring:** Use suitable terminal blocks and power distribution blocks to route and split feeders into branches, and apply clear wire management for installation and service.
- **Disconnects:** Provide non fused or fused disconnects (or breaker operated mechanisms) with lockout/tagout capability, installed within sight of the equipment to enable safe maintenance.
- **Overcurrent protection:** Select MCCBs, MCBs, fuses, and (where appropriate) supplementary protectors based on load type, voltage/current, and trip characteristics; review time current curves and interrupting ratings.
- **Branch vs supplementary:** Use UL 489 devices for branch circuits; use UL 1077 supplementary protectors only inside equipment where branch protection already exists or is not required (see Branch vs Supplementary protection comparison table for more information).
- **Motor circuits:** Motor loads draw high inrush current during starting; coordinate protection so it rides through normal inrush yet trips on sustained overloads and faults. Coordinate short circuit protection with the motor controller and a dedicated overload relay, or apply IEC manual motor protectors; consider phase monitor relays for reversal, loss, unbalance, under/overvoltage.
- **Fuses:** Time delay types ride through inrush yet clear faults rapidly with high interrupting and current limiting capability; size and install them in touch safe holders/blocks where needed. Fuses are cost effective, inherently fast at clearing faults, and offer very high interrupting/current limiting performance; the tradeoff is manual replacement after operation (for further details, see Fuses: Why and Where section).
- **Ground fault protection:** Add ground fault sensors to detect low-level leakage current and signal or trip a control circuit to protect people and equipment.
- **Power quality:** Use surge protective devices, line/load reactors, and filters to reduce transients and EMI/RF noise that cause nuisance trips or device failures.
- **24 VDC electronics:** For low power control circuits, electronic circuit protection (ECBs) delivers fast, selective protection, remote control/reset, staged energization to avoid power supply overloads, status indication, adjustable outputs, and Class 2 Power options to reduce wiring complexity.





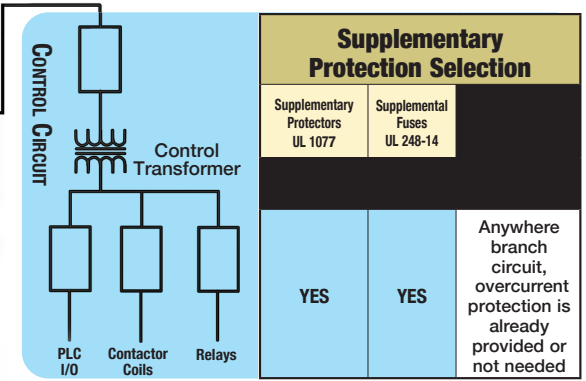
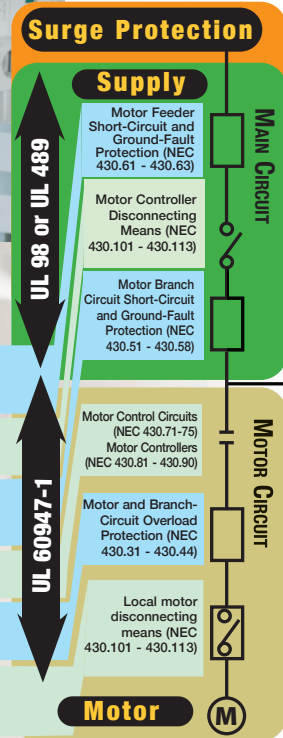
What Type of Protection to Use?

With so many products available, the best path is to identify the function (feeder, branch, control, or motor), choose the correct standard (UL 489 for branch, UL 1077 for supplementary), and size/coordinate devices using ratings and trip curves to meet code and design goals.

- Use UL 489 MCCBs/MCBs or current limiting fuses for feeder/branch short circuit protection and as disconnecting means.
- Disconnect switches provide manual isolation (fused or non fused).
- Manual motor protectors (MMPs) combine control/disconnect functions with overload and short circuit protection for many motor applications.
- Load switches provide simple on/off control within equipment.
- Supplementary protectors (UL 1077) are intended for equipment level protection only—not for branch circuit conductors.
- General/electronic fuses address specialized applications and small circuits.

Motor Circuit Protection Selection

	Molded Case Circuit Breakers and Switches UL 489	Branch Circuit Fuses UL 248	General-Use and Motor Circuit Switches UL 98 Open-type switches UL 98A ₁	Manual Motor Protectors UL 60947-4-1 ₄	Motor Controllers UL 60947-4-1 ₄	Supplementary Protectors UL 1077	Supplemental Fuses UL 248-14
Motor Feeder Short-Circuit and Ground-Fault Protection (NEC 430.61 - 430.63)	YES	YES	N/A	NO	NO	NO	NO
Motor Controller Disconnecting Means (NEC 430.101 - 430.113)	YES	N/A	YES	YES ₁	NO	NO	NO
Motor Branch Circuit Short-Circuit and Ground-Fault Protection (NEC 430.51 - 430.58)	YES	YES	N/A	YES ₁	NO	NO	NO
Motor Control Circuits (NEC 430.71-75) Motor Controllers (NEC 430.81 - 430.90)	YES	N/A	YES	YES	YES	YES ₃	YES ₃
Motor and Branch-Circuit Overload Protection (NEC 430.31 - 430.44)	YES	YES	N/A	YES	NO	NO	NO
Local motor disconnecting means (NEC 430.101 - 430.113)	YES	N/A	YES	YES	YES ₂	NO	NO



1. When installed as part of a listed self-protected combination motor controller.
 2. Only when additionally marked "Suitable as motor disconnect."
 3. Only when used to provide supplemental protection in the motor control circuit.
 4. This chart focuses on general purpose circuit protection devices, for motor control needs refer to our Motor Controls brochure

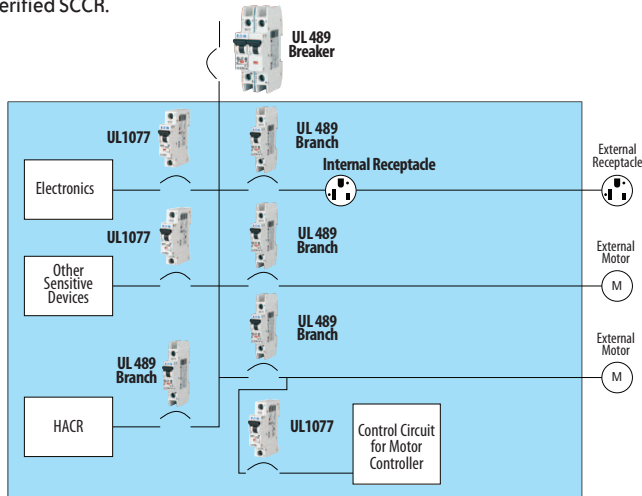
Branch or Supplementary Circuit Protection?

Branch Circuit Protection (UL489)

UL 489 circuit breakers are listed for feeder/branch circuits and provide tested overload and short circuit performance with specified interrupting ratings. They can act as disconnects, support accessories (auxiliary/alarm contacts, shunt/undervoltage trip, external handles), and are available in many trip types (thermal magnetic, or electronic). Use them where external loads require full branch protection and verified SCCR.

Supplementary Protection (UL 1077)

UL 1077 devices provide additional, equipment level overcurrent protection inside a machine or panel where branch protection already exists or isn't required. They are not permitted to protect branch circuit conductors. Typical uses include control circuits, control power transformers, PLC I/O, relays, and lighting, where selective, compact protection is helpful.



Example of UL 489 and UL 1077 Application

UL489 Branch Protection

- UL489 Listed or Recognized
- CSA C22.2 No. 5
- International ratings available depending on breaker type

Function

- Opens automatically on Overload and Short Circuit when properly applied within its ratings
- Protects wire and cable against Overload and Short Circuit

Applications

- Branch circuit protection in control panels, panelboards, switchboards and motor control centers
- Motor overload and motor short circuit protection (UL489 Recognized motor circuit protectors) for control panels and motor control centers

Features

- Bolted down or DIN rail mounted
- External handle mechanisms available
- Field mounted accessories
- Stand alone branch circuit protection
- Various levels of protection (curve type)
- High voltage and interruption levels (up to 100 kAIC @ 480V)

UL1077 Supplementary Protection

- UL Recognized under UL1077
- CSA 22.2 No. 285
- IEC 60947-2 or IEC 898

- Opens automatically on Overload and Short Circuit
- Provides additional equipment protection where branch circuit protection is already provided or not required
- Not suitable for the protection of branch circuit conductors

- Used within appliances or other electrical equipment such as control circuits, control power transformers, relays, PLC I/O points and lighting circuits
- Ideal replacement for fuses that are applied as supplementary protection

- DIN rail mounted
- Field mounted accessories
- Various levels of protection (curve type)
- 10 kAIC @ 240 VAC
- 10 kAIC @ 277 VAC and 5 kAIC @ 480VAC
- 10 kAIC @ 48VDC

kAIC = thousands of Amps interrupt capacity

Summary

A Supplementary Protector can't be used for Branch Circuit Protection. Understanding the difference between Branch Circuit Protection and Supplementary Protection helps to ensure their proper use.

Fuses: Why and Where

Fuses provide reliable, cost effective overcurrent and fault protection, with excellent interrupting and current limiting performance. They are well-suited for feeders, transformers, power supplies, and motors, particularly where high fault current is possible.

Select fuse type (time delay vs fast acting), voltage/current rating, and physical class to match the application and because a fuse operates once and must be replaced, use touch safe holders/blocks and blown indication where helpful.

Common terms for fuse selection

Ampere Rating: Continuous current a fuse is designed to carry under specified conditions.

Fast-Acting vs Time-Delay Fuse: Fast acting clears quickly and is common for electronics and resistive loads; time delay (dual element) rides through inrush from motors/transformers but still clears sustained overloads and faults.

Fault Current/Available Fault Current: The large short circuit current that can flow during a fault; selection must consider the maximum available fault current at the point of installation.

Interruption Rating: The maximum fault current the fuse can safely interrupt at rated voltage. High interrupting ratings are a key reason to choose fuses for upstream protection.

Current-limiting Fuse: Many industrial fuse classes limit let-through energy and peak current, reducing thermal and mechanical stress on conductors and equipment. These fuses meet the following three conditions:

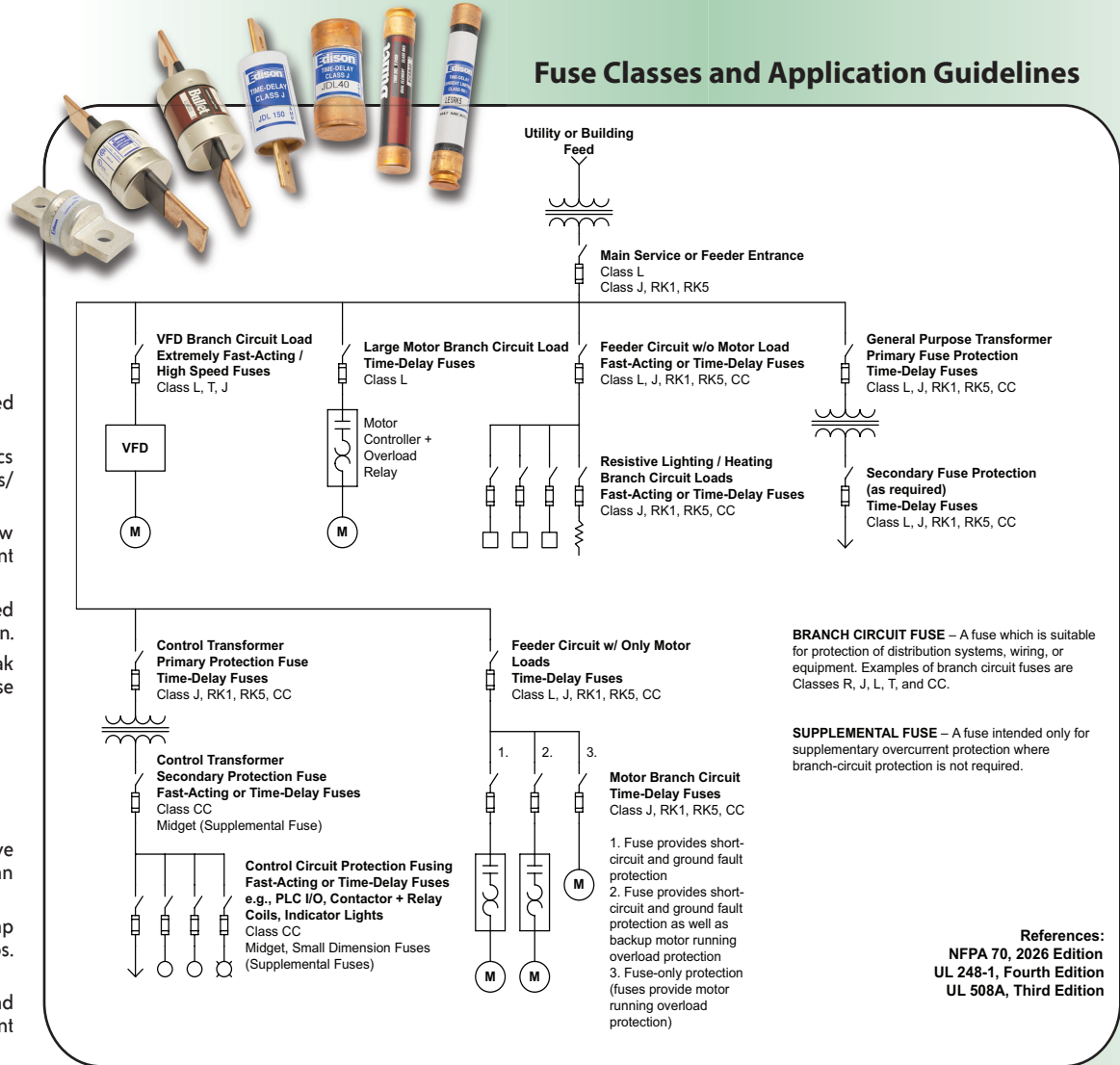
1. Interrupts all available overcurrents within its interrupt rating.
2. Within its current limiting range, limits the clearing time at rated voltage to an interval equal to, or less than, the first major or symmetrical current loop duration.
3. Limits peak let-through current to a value less than the available peak current.

Element: A calibrated conductor inside a fuse that melts when subjected to excessive current. The element is enclosed by the fuse body and may be surrounded by an arc-quenching medium.

Ferrule: The cylindrical brass, bronze or copper mounting terminals of fuses with amp ratings up to 60 amps. The cylindrical terminals at each end of a fuse fit into fuse clips. Above 60 amps, fuses are blade-type mounted.

Classes and form factors: Industrial panels commonly use Class CC, J, L, RK1/RK5, T, and small electronic fuses; pair them with appropriate touch safe holders or panel mount blocks.

Fuse Classes and Application Guidelines

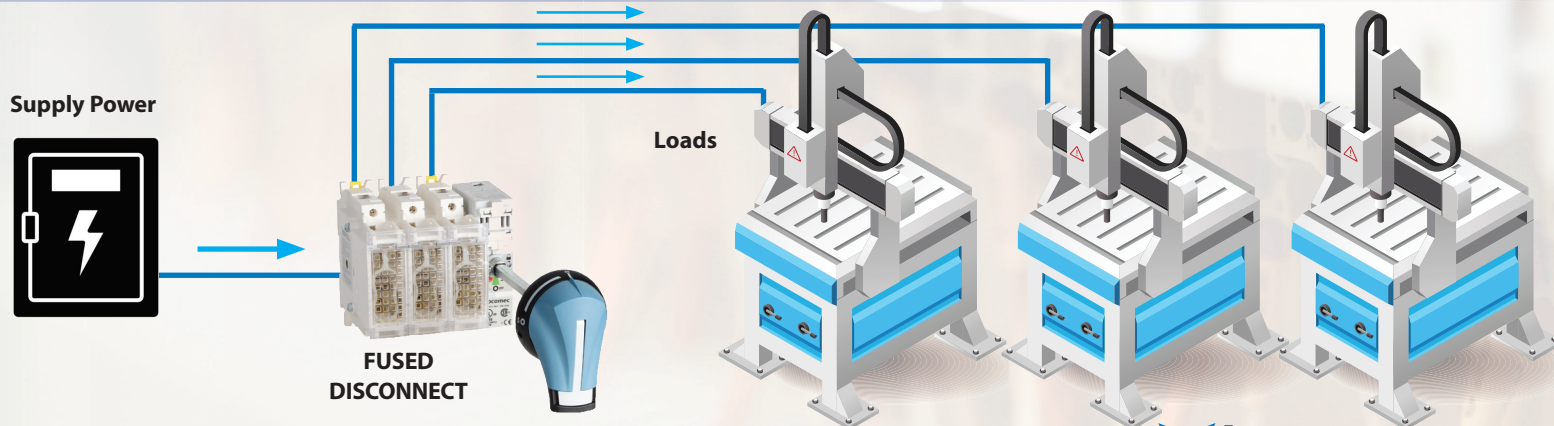


Common Applications for Circuit Protection Devices

- **Industrial Plant Power Distribution:** Molded Case Circuit Breakers, like the L3P-500-STDC, ensure reliable power protection across industrial facility panels, preventing equipment damage and downtime.

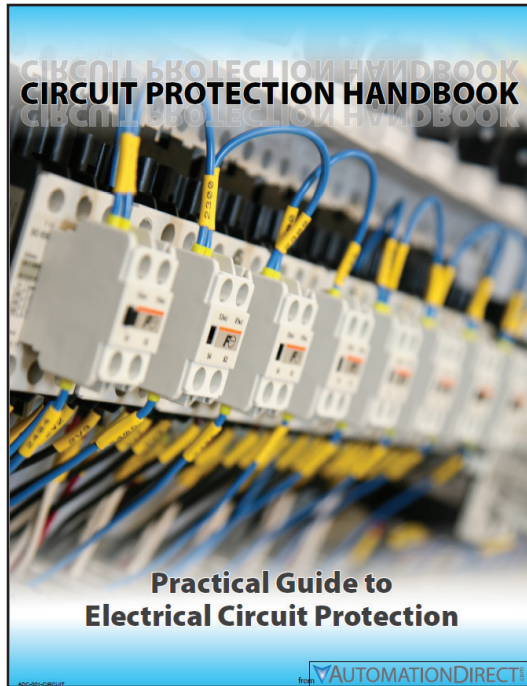


- **Overcurrent Protection:** Fused motor disconnects provide a disconnecting means and overcurrent protection to quickly clear faults. Select fuse ratings that coordinate with upstream protection devices and meet all motor load requirements.

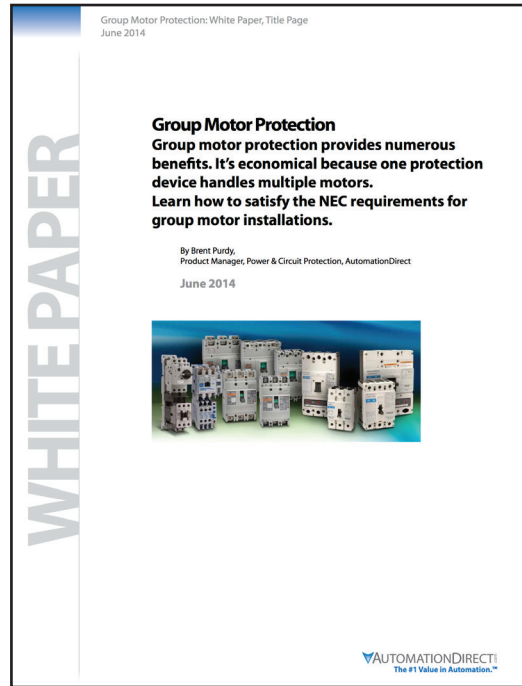


Check out these educational publications on electrical systems and circuit protection

A wealth of knowledge is available in our online library. In addition to the two educational publications highlighted here, we have more on a variety of topics.



<https://go2adc.com/Cir-Prot-ebook>

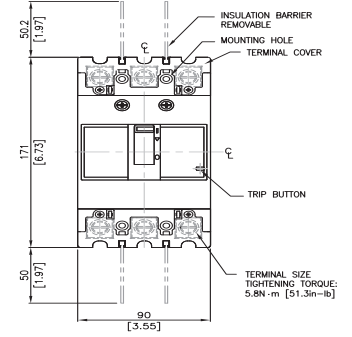
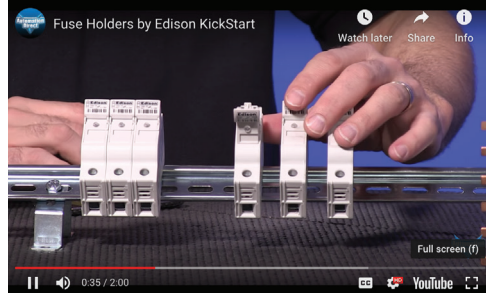


<http://go2adc.com/motor-wp>



<http://go2adc.com/wp>

www.AutomationDirect.com



Thousands of videos
<http://go2adc.com/vids>

Thousands of photos

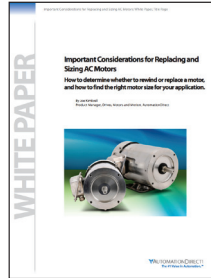
CAD drawings

Whatever your circuit protection needs are, we have them in stock and ready to ship.

Just simply go to:
<https://go2adc.com/mccb-pc>

FREE resources available 24/7

GO! Library.AutomationDirect.com



Whitepapers



Application article library

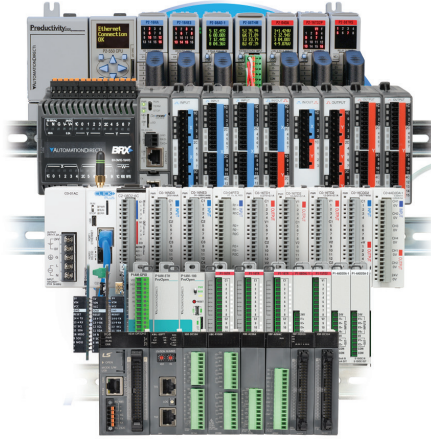


E-books

GO! Join the discussion at: Forum.AutomationDirect.com

www.AutomationDirect.com I-800-633-0405  AUTOMATIONDIRECT.com

**If it's in your cabinet . . .
 . . . it's online at AutomationDirect.com**



Programmable Controllers

- Productivity1000 micro-modular PLCs (standard and Mini versions)
- Productivity2000 micro-modular PLCs
- Productivity3000 modular PLCs
- ProductivityOpen Arduino-compatible industrial controller
- ProductivityCODESYS
- Do-more BRX, H2 and T1H series PLCs
- CLICK and CLICK PLUS micro brick PLCs
- LS Electric PLCs
- I/O expansion modules available include discrete, analog, temperature, and high-speed (depending on model)
- DirectLOGIC components still available for maintaining legacy systems



HMI/Operator Interface

- C-more operator interface HMI touch panels in various sizes up to 22 inches with wide screen options available
- C-more headless HMI - same functionality as C-more touch panels without display size restrictions
- Low-cost C-more Micro text and touch panels - 3- and 4-inch models
- C-more and C-more Micro HMI design software free to download
- ViewMarq LED message displays
- ATLAS and C-more industrial monitors

YouTube



Universal Field I/O

- IO-Link master modules, hubs, and a variety of IO-Link enabled devices
- Distributed I/O with Modbus TCP, EtherNet/IP, EtherCAT, Modbus RTU, DeviceNET communication options
- Various combinations of discrete (AC, DC, relay, high-speed) and analog inputs and outputs available

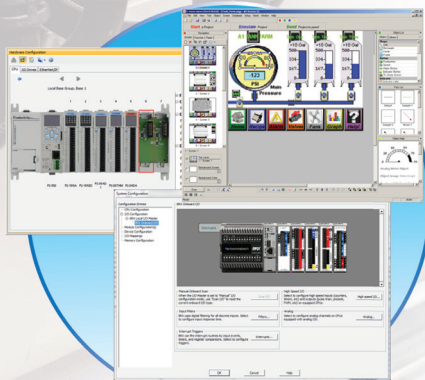


Communications

- Industrial managed, unmanaged+, and unmanaged Ethernet switches
- StrideLinx VPN routers and cloud services for secure remote access
- MQTT and Modbus protocol gateways
- Network adapters, isolators, and converters
- PoE injectors
- Copper and fiber optic Ethernet cables



AC and DC Drives



- DURApulse variable frequency AC drives up to 300hp, featuring GS10, GS20, GS20X, GS30, and GS4 series
- Toshiba AS3 AC VFDs up to 300hp
- IronHorse variable frequency drives up to 30hp featuring ACM, ACG, and ACN series
- WEG CFW100, CFW320 and CFW500 AC drives up to 150hp, depending on series
- WEG CFW500 drives up to 30hp, IronHorse ACN drives up to 30hp and DURApulse GS20X drives up to 10hp available in a NEMA 4X enclosure
- IronHorse DC drives up to 3hp
- Drive accessories
- Soft starters up to 480A



What our current customers think:
www.automationdirect.com/reviews

- Free PLC programming software (download)
- Configuration software packages for a variety of process instruments
- Free motion control systems' configuration software (download)
- Free HMI programming software (download)
- Free AC drive configuration and programming (built-in PLC software) (download)

- IronHorse general purpose AC motors up to 300hp
- Stainless steel and white epoxy washdown AC motors
- Stainless steel AC motors
- IronHorse three-phase ODP motors up to 50hp
- U.S. Motors inverter duty AC motors up to 20hp
- Marathon inverter duty AC motors up to 15hp
- Marathon permanent magnet AC motors up to 10hp
- DC motors up to 2hp
- Motor controls and contactors up to 300hp
- WEG general purpose AC motors and AC brake motors up to 20hp
- Toshiba Severe Duty AC Motors up to 100hp
- MGM IEC and IEC brake motors up to 5hp



Motors and Motor Controls



Process Control and Measurement

- Humidity sensors
- Weight/force sensors (load cells) and transmitters
- Temperature and process controllers
- Digital, analog, and process panel meters
- Temperature sensors and transmitters
- Infrared pyrometers
- Pressure sensors and gauges
- Level sensors and controllers
- Flow sensors and transmitters
- Signal conditioners
- Current to pneumatic (I/P) transducers
- Vibration switches and transmitters
- Trumeter graphical panel meters
- Hour meters and counters

Software

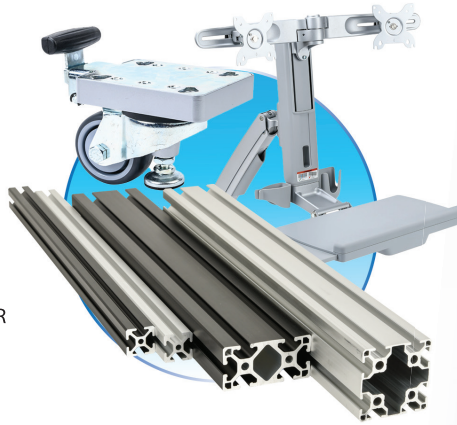
www.AutomationDirect.com 1-800-633-0405

AUTOMATIONDIRECT.com



Safety

- ReeR and Schmersal safety controllers
- IDEM and Dold safety relays
- Speed/Standstill safety relay modules
- WEG safety contactors
- Safety laser scanners
- Magnetic safety switches
- Magnetic coded safety switches
- RFID coded safety switches
- Light curtains from Contrinex, ReeR and Datalogic
- Two-Hand controls
- Trapped key interlocks
- Safety enabling switches
- Safety mats and edges
- Safety bumpers
- Programmable and configurable safety relays
- Intrinsically safe isolators
- Hazardous location devices
- Safety enabling switches
- IDEM Z-Range safety devices
- IDEM Universal Gate Boxes



Structural Frames/Rails

SureFrame cut-to-length aluminum T-slotted rails make constructing a frame or machine easy and quick.

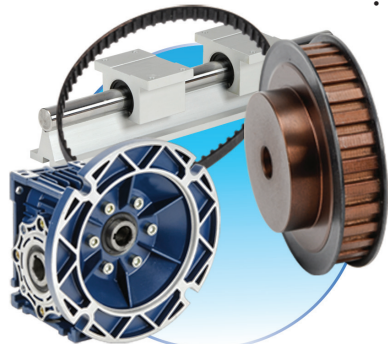
NO CUT CHARGES

- Complete assortment of hardware and accessories to complete your slotted rail project
- You specify length and cut angles for each piece
- No cut fees
- Select sizes and weights available in UV-resistant black anodized
- Ergoswiss lifting columns
- Free 2-day delivery on all orders over \$49



Relays and Timers

- Electro-mechanical relays
- Intrinsically safe relays
- Phase monitoring relays
- Alternating relays
- Optocoupler relays
- Pump seal failure relays
- Voltage monitoring relays
- Slim interface relays
- Power relays
- Solid state relays
- Hazardous location relays
- Timer relays
- Multi-Function Digital Counter / Timer / Tachometers
- Force-guided relays



Power Transmission

- Worm gearboxes
- Stainless steel worm gearboxes
- Helical gearboxes
- Precision gearboxes
- Timing belts and pulleys
- Couplings and bushings
- Shafting and shaft supports
- igus polymer bearings
- GAM rack and pinions
- Linear bearings and rail



Tools

- Multimeters and testers from Ardent and Southwire
- Screwdriving tools from Wera, Wiha, Weidmuller, and MEGAPRO
- Ratchets and sockets from Bondhus, Wera, and Wiha
- Wrenches from CHANNELLOCK, Wera, Wiha, and more
- Pliers and stripping tools from Weidmuller, Wiha, JOKARI, and AutomationDirect
- Morse hole cutting and knockout tools from Viking and MK
- Grinders and burrs from RUKO
- Crimping tools from AutomationDirect, Southwire, Wiha, and Z+F
- Tool cases and bags
- Heat guns from Master Appliance
- Soldering irons and guns from Wall Lenk



Circuit Protection

- UL 489 miniature circuit breakers from Eaton and Gladiator
- UL 489 molded case circuit breakers from AutomationDirect, Gladiator, and Fuji
- UL1077 supplementary protectors from Eaton and Gladiator
- Edison fuses, fuse holders and fuse blocks
- Disconnect switches from Socomec, Gladiator, and Bryant
- Bryant UL 508 manual motor controllers
- Socomec manual transfer switches
- Electronic circuit protectors from E-T-A, Gladiator, RECOM, and WAGO
- Merz rotary cam switches



Identification

- Code brand scanner (including 1D, 2D and DPM images)
- Datalogic rugged handheld barcode scanners
- Contrinex RFID devices use radio frequencies to read and transmit data without the need for line of sight
- AutomationDirect Standalone RFID R/W units provide fast and long range communication with RFID tags
- Datalogic smart vision sensors make a decision based on a captured image, very useful for applications requiring presence and/or orientation object detection.
- ifm machine mount barcode scanners and cameras
- Swivellink mounting systems
- Wenglor vision lighting



Motion Control

- ProductivityMotion controller
- LS Electric XGB Motion-Centric PLC with EtherCAT
- SureServo2 drives and motors, up to 15kW
- LS Electric servo drives and motors up to 7.5kW (including EtherCAT models)
- Stepper and servo gearboxes
- SureStep stepper drives and NEMA motors
- Stepper motor linear actuators
- Leadshine stepper drives
- Incremental, absolute, and comms encoders
- CUI Devices kit encoders
- XYZ gantry components, including linear slides and actuators



Sensors

- Proximity sensors
- Photoelectric sensors
- Limit switches
- Precision limit switches
- Inclination sensors
- Laser sensors
- Color and contrast sensors
- Light grids
- Current and voltage sensors
- Position indicators
- Ground fault sensors
- Ultrasonic sensors
- Fork sensors
- Linear position sensors
- Sensor signal converters
- IO-Link enabled smart sensors





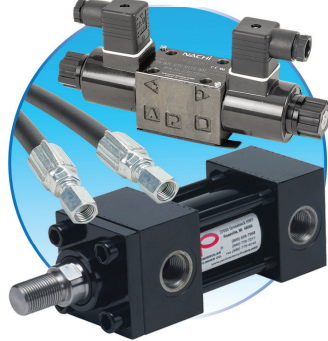
Pushbuttons, Switches, and Lights

- KILLARK hazardous location control stations
- IDEM emergency stops
- Fuji 16mm plastic pilot devices
- Fuji, Schmersal, and Eaton metal/ plastic 22 and 30mm pilot devices
- IP69K-rated pilot devices from Schmersal
- Captron IP69K capacitive pilot devices
- Patlite, Pfannenberg, and WERMA audible and visual signal beacons
- WERMA and Patlite stacklights
- Molex pendant switches
- Foot switches
- Alarms, horns and buzzers



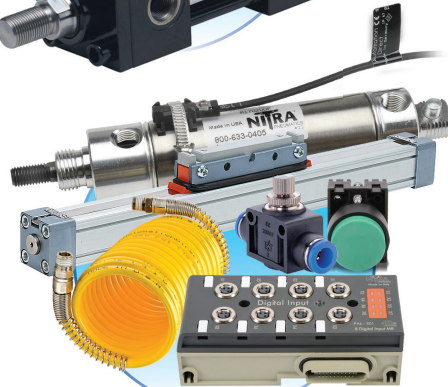
Valves

- General-purpose process valves
- Modular process valves
- Manifold process valves
- Stacking process valves
- NSF Cert water valves
- Pipeline/process valves
- Solenoid valves



Hydraulics

- Hydraulic power units
- NFPA style hydraulic cylinders
- Hydraulic solenoid valves
- Hydraulic hose assemblies and adapters



Pneumatics

- Tubing, hose, and fittings in a wide variety of configurations
- Air cylinders and position switches
- Solenoid valves
- Rodless air cylinders
- Modular solenoid valves (Ethernet or hardwired)
- Air preparation and air relief valves
- Pushbutton valves
- Total Air Prep (TAP) all-in-one units
- Rotary actuators and grippers
- Needle valves
- Pneumatic pushbuttons and limit switches
- Electro-pneumatic systems
- Vacuum products; suction cups, ejectors, spring plungers

Power Products



- Transformers from Acme Electric, BLOCK, Hammond, and Murrelektronik
- Power supplies from AchieVe, BLOCK, LUTZE, RECOM, RHINO, and WAGO
- DC UPS systems
- SureStep and International Power linear power supplies
- Roxburgh and Eaton line filters and surge protectors
- Roxburgh power outlets
- Hammond drive isolation transformers
- Edison and Penn Union power distribution blocks
- Bryant electrical plugs, connectors and receptacles, and other wiring devices
- AcuAMP AC current transformers
- Socomec multifunction power meters
- Surge protection devices



Water (Potable) Components

- Regulators
- Solenoid valves
- Hand valves
- Check valves
- Push-to-connect water fittings
- Tubing
- Hose
- Hose clamps

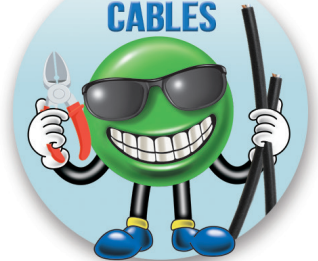


Wiring Solutions

- Konnect-It and DINnectors terminal block systems
- Bryant power wiring devices
- Wire duct and tubing
- Standard and sanitary cable entry systems for enclosures
- Wire end connectors, cable glands, sanitary cable glands, connectors and fittings
- ZIPport connectors
- Murrelektronik and ZIPport multi-port distribution blocks
- Sensor cables
- General- and special-purpose cable ties
- Epson portable label printers
- Electrical tape

NO CUT CHARGES

CUT TO LENGTH CABLES



Cut-to-length cables

All of our cable is available cut to your specified lengths so you can eliminate waste and purchase only what you need - **plus it's cut for free and shipped FAST!!**

- Portable cords
- Power cables
- Tray-rated cables
- Low voltage control & signal cables
- 600V control cables
- Food and beverage (FDA approved) cables
- Motor and VFD supply cables
- Data & Communication cables
- Process & instrumentation cables
- Thermocouple and RTD extension wire/cable

SCE SAGINAW CONTROL & ENGINEERING

HAMMOND MANUFACTURING.

WIEGMANN

INTEGRA ENCLOSURES

STAHLIN A ROBROY ENCLOSURES* BRAND

AttaBox A ROBROY ENCLOSURES* BRAND

FIBOX Enclosing innovations

QUADRITALIA



Enclosures

- Thousands of NEMA rated enclosures from Saginaw, Hammond, Fibox, Wiegmann, Integra, Quadritalia, AttaBox and Stahlin
- Many types of metallic and non-metallic enclosures
- Modular enclosures
- Data communication racks
- Sanitary enclosures
- HMI enclosure suspension arm systems
- Heating, cooling, and climate control
- Lighting
- Wide selection of enclosure accessories



Bulk Electrical Hook-up/Building Wire

AutomationDirect has a large selection of quality electrical wire that meets all NFPA and NEC requirements, sold in prespooled lengths at great prices.

- MTW machine tool wire
- TFFN fixture wire
- THHN general purpose building wire
- AWM appliance wire
- DLO power cable
- HAR Harmonized wire



AutomationDirect.com
Product Engineering and Development

AutomationDirect.com HQ campus and warehouses

AutomationDirect
3505 Hutchinson Rd
Cumming GA 30040



AutomationDirect.com
Content and Web Store Development

Our campus is located about 45 minutes north of Atlanta, GA, USA. **We're all here** - our sales and technical support teams, purchasing, accounting, and of course our multiple huge warehouses and speedy logistics team.

- Honest up-front pricing (no gimmicks)
- Quick delivery - order today, it ships fast!
- Top technical support as rated consistently by our customers
- FREE shipping on orders over \$49

Copyright © March 2026, Automationdirect.com Incorporated.
All Rights Reserved.

AutomationDirect.com has been a leader in providing affordable, quality industrial control products to the U.S. and Canada for more than two and a half decades.

As a privately-held efficiently run company, we take pride in serving our customers the way they want to be served - honestly and fairly. We do everything we can to accomplish this day in and day out.



AUTOMATIONDIRECT.com
www.AutomationDirect.com 800-633-0405