

# BRYANT® Wiring Devices – Accessories

## Features

### Nylon Angle Adapter

- Converts 20A and 30A nylon locking plugs and connectors into space saving angle devices
- Adapters permit wire to exit parallel to the receptacle; eliminating space needed for wire to bend

### Weather Protective Boots; 5200 Series

- For use with Bryant 15 and 20 Amp straight blade plugs and connectors and 15 Amp locking plug and connectors
- Help prevent moisture, dust and other contaminants from infiltrating plugs and connectors
- Available in high visibility yellow or standard black
- Thermoplastic elastomer construction
- Excellent ozone and weather resistance
- Resistant to deterioration by oils and heat
- IP55 Suitability when installed and used properly with plug and connector body combinations
- Connector sealing ring provides extra protection when plug and connector are not mated
- Ribbed exterior provides firm grip

### Weather Protective Boots; 7200 Series

- For use with Bryant 20 and 30 Amp locking plugs and connectors
- Help prevent moisture, dust and other contaminants from infiltrating plugs and connectors
- Chemical/UV resistant construction
- Available in high visibility yellow or standard black
- Ribbed exterior provides firm grip
- Sealing ring seals connector when not mated
- For use with Bryant Triple Gripper® 20 and 30 Amp nylon plugs and connectors
- IP55 Suitability when installed and used properly with plug and connector body combinations

### Stainless Steel Cover Plates

## Approvals

- UL File E31999\*
- CSA Certified 18416\*



\*Approvals for stainless steel receptacle plates only.

Wiring Devices Accessories		
Part Number	Description	Price
<b>Receptacle Plates</b>		
<b>SS8</b>	Bryant cover plate, for use with 15A and 20A duplex receptacles in 1 gang electrical boxes.	\$6z1:
<b>SS7</b>	Bryant cover plate, for use with 15A and 20A single receptacles in 1 gang electrical boxes.	\$-6zj:
<b>SS723</b>	Bryant cover plate, for use with 30A single receptacles in 1 gang electrical boxes.	\$6zn:
<b>SS703</b>	Bryant cover plate, for use with 30A single receptacles in 2 gang electrical boxes.	\$6zk:
<b>SS720</b>	Bryant cover plate, for use with 20A and 30A single receptacles in 1 gang electrical boxes.	\$-6zl:
<b>Angle Adapter*</b>		
<b>70204ANA</b>	Bryant 90 degree angle adapter, black. For use with 20A and 30A locking plugs and connectors.	\$06za:
<b>Weather Boots*</b>		
<b>5200BP</b>	Bryant weather boot, high visibility yellow. For use with 15A locking, 15A straight blade, and 20A straight blade plugs.	\$06z6:
<b>5200BC</b>	Bryant weather boot, high visibility yellow. For use with 15A locking, 15A straight blade, and 20A straight blade connectors.	\$06z4:
<b>5200BSR</b>	Bryant weather boot cap, high visibility yellow. For use with 5200BC boot.	\$06z8:
<b>5200BPB</b>	Bryant weather boot, black. For use with 15A locking, 15A straight blade, and 20A straight blade plugs.	\$06z7:
<b>5200BCB</b>	Bryant weather boot, black. For use with 15A locking, 15A straight blade, and 20A straight blade connectors.	\$06z5:
<b>5200BSRB</b>	Bryant weather boot cap, black. For use with 5200BCB boot.	\$06z9:
<b>72002BC</b>	Bryant weather boot, high visibility yellow. For use with 20A and 30A locking connectors.	\$06zb:
<b>72002BP</b>	Bryant weather boot, high visibility yellow. For use with 20A and 30A locking plugs.	\$06zd:
<b>72002BPB</b>	Bryant weather boot, black. For use with 20A and 30A locking plugs, chemical and ultraviolet resistant thermoplastic elastomer construction, black.	\$06ze:
<b>72002BCB</b>	Bryant weather boot, black. For use with 20A and 30A locking connectors.	\$06zc:

\*Angle adapter and weather boots are not UL listed or CSA certified.



**Stainless Steel  
Receptacle Plates**



**Angle Adapter  
70204ANA**

# BRYANT® Wiring Devices – Accessories



**72002BC**  
**Weather Boot**

**Note:** Connectors shown on above installations are not included and are purchased separately.



**Angle Adapter 70204ANA**

+



=



+



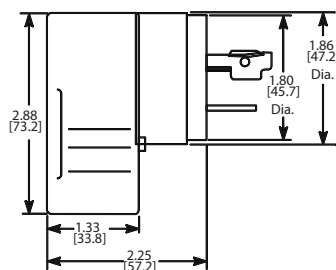
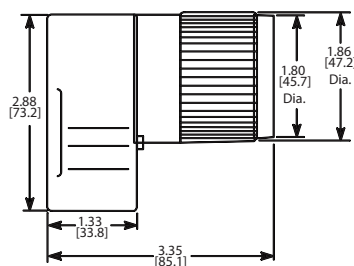
=



## Dimensions

inches [mm]

### Angle Adapter



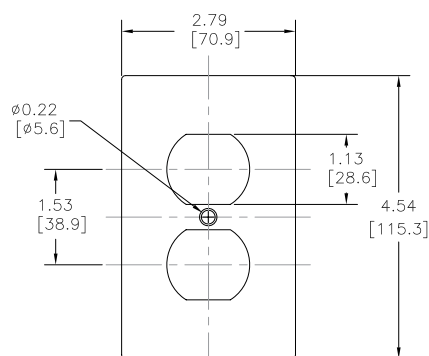
Angle Adapter

# Wiring Devices – Accessories Drawings

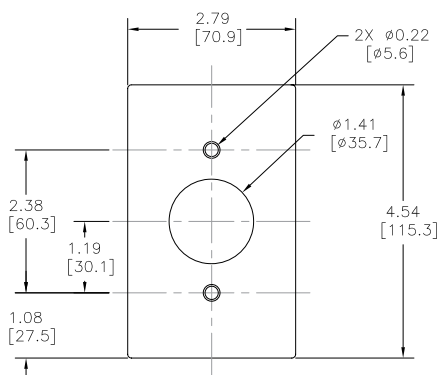
## Dimensions

inches [mm]

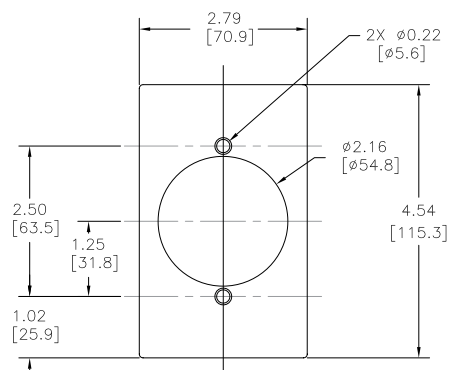
### Stainless Steel Cover Plates



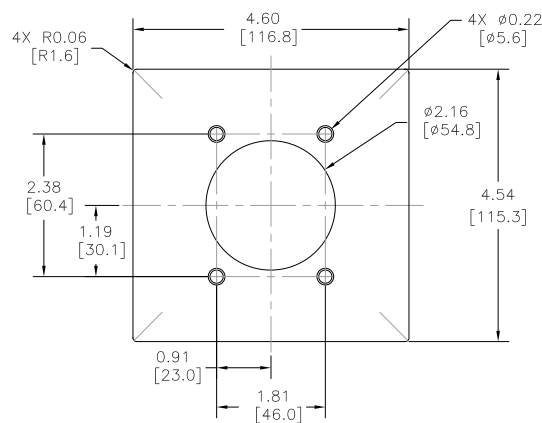
**SS8**



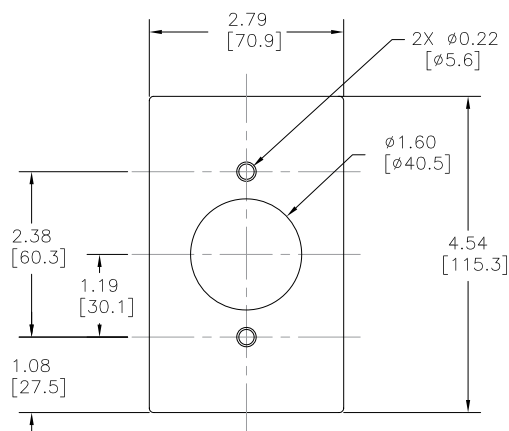
**SS7**



**SS723**



**SS703**



**SS720**