


KS 71 Elements Quick Selection Guide

STEP 1 - Optical Elements Quick Selection Guide

Type of Light	Part Number	Color	Operating Voltage	Price	Type of Light	Part Number	Color	Operating Voltage	Price
Incandescent Permanent*	64110000	Red	Depends on bulb selection (bulb sold separately)	\$0a8b:	Xenon Flashing Light	64310055	Red	24VDC	\$00a8g:
	64120000	Green		\$0a8c:		64320055	Green		\$-00a8i:
	64130000	Yellow		\$0a8d:		64330055	Yellow		\$00a8k:
	64140000	Clear		\$0a8e:		64340055	Clear		\$00a8n:
	64150000	Blue		\$0a8f:		64350055	Blue		\$00a8p:
Incandescent Bulbs	95584035		24V AC/DC	\$eca:		64310067	Red	115VAC	\$00a8h:
	95584038		230VAC	\$ecb:		64320067	Green		\$-00a8j:
	95584057		115V AC/DC	\$ecc:		64330067	Yellow		\$-00a8l:
LED Permanent	64410075	Red	24V AC/DC	\$0a8t:	LED Blinking Light	64340067	Clear		\$00a8o:
	64420075	Green		\$0a8j:		64350067	Blue		\$00a8q:
	64430075	Yellow		\$0a8,:		64411075	Red	24V AC/DC	\$0a8v:
	64440075	Clear		\$0a95:		64421075	Green		\$0a8_:
	64450075	Blue		\$0a9b:		64431075	Yellow		\$0a91:
	64445055**	Multi	24VDC	\$00?a9:		64441075	Clear		\$00a97:
	64410067	Red	115VAC	\$0a8s:		64451075	Blue		\$00a9d:
	64420067	Green		\$0a8z:		64411067	Red	115VAC	\$0a8u:
	64430067	Yellow		\$0a8?:		64421067	Green		\$0a8j:
	64440067	Clear		\$00a94:		64431067	Yellow		\$0a90:
LED Flashing Light	64450067	Blue		\$00a9a:	LED Rotating Light	64441067	Clear		\$00a96:
	64412055	Red	24VDC	\$00a8x:		64451067	Blue	24V AC/DC	\$00a9c:
	64422055	Green		\$00a8#:		64413075	Red		\$00a8y:
	64432055	Yellow		\$00a92:		64423075	Green		\$00a8!:
	64442055	Clear		\$00a98:		64433075	Yellow		\$00a93:
	64452055	Blue		\$00a9e:		64443075	Clear		\$00a99:
						64453075	Blue		\$00a9f:

* Bulbs are required for permanent incandescent optical element.

** The multicolor element can be combined with up to 2 additional signal elements.

STEP 2 - Audible Elements Selection

Part Number	Description	Voltage	Tone Frequency	Max. Volume @ 1m	Price
64580075	Buzzer element	24V AC/DC	1.75 kHz	85dB	\$0a9g:
64580077		115VAC			\$0a9h:
64585055	Multi-functional siren, external trigger	24VDC	1.6 / 3.4 kHz	100dB	\$-00a9l:
64581055	Siren element with self-adjusting sound output	24VDC	2.5 kHz	100dB	\$-00a9i:

STEP 3 - Terminal Elements Selection

Part Number	Description	Mounting	Price
64082000	Screw terminal with M3 clamps	base bracket	\$0a89:
64080000	Terminal element with CAGE CLAMP® technology		\$0a87:
64083000	Screw terminal with M3 clamps	tube	\$0a8a:
64081000	Terminal element with CAGE CLAMP® technology		\$0a88:

STEP 4 - Tube Mounting/Accessories Selection

Part Number	Description	Price
97584510	Anodized tube, 100mm [3.94 in] long	\$-0ej,:
97584025	Anodized tube, 250mm [9.84 in] long	\$-0ej!:
97584040	Anodized tube, 400mm [15.75 in] long	\$-0ej?:
97584060	Anodized tube, 600mm [23.62 in] long	\$-0ej_:
97584080	Anodized tube, 800mm [31.49 in] long	\$-0ej#:
97584003	Anodized tube, 1000mm [39.37 in] long	\$-0ej[:
96000018	Tube with clamp	\$-0ejz:
96000025	Adapter for single-hole mounting	\$04bz:
97584010	Base with integrated tube	\$0eah:
97584090	Plastic base for 25mm [0.98 in] diameter tube	\$-0eai:
97584091	Metal base for 25mm [0.98 in] diameter tube	\$0ea9:
96000031	Plastic tube for foldaway base	\$-ej]:
97584002	Adapter for tube mounting	\$04bj]:
96000004	Cable gland for surface mounting	\$-4iq:
96000030	Foldaway base	\$0ea8:

STEP 5 - Contact Boxes & Brackets Selection

Mounting Option	Part Number	Description	Price
Plain Base Mount	97584001	Contact box with side exit cable	\$04[h:
	96000002	Bracket for base mounting	\$05h9:
	97584085	Bracket for 1-sided mounting	\$05hb:
	97584086	Bracket for 2-sided mounting	\$05hc:
Tube Base Mount	97584001	Contact box with side exit cable	\$04[h:
	97584004	Contact box w/ magnetic base and side cable exit	\$-04[i:
	96000014	Bracket for base mounting w/ concealed cable entry	\$05ha:
	96000001	Bracket for tube mounting	\$05h8:

KS 71 Optical Elements Specifications

Optical Elements Technical Specifications

Part Number	Color	Drawing Link	Description	Voltage	Current	Starting Current	Operating Temp/ Protection	Life Duration	Flash Frequency	Housing Material	Weight g [oz]
64110000	Red	PDF	Incandescent Permanent Light Element with B15d Bayonet Socket	12-240 V Depends on bulb selection. (bulb sold separately)	Depends on bulb selection. (bulb sold separately)	-	-20 to 60°C [-4 to 140°F] IP65	up to 5,000h	-	Polycarbonate	55 [1.94]
64120000	Green	PDF									
64130000	Yellow	PDF									
64140000	Clear	PDF									
64150000	Blue	PDF	LED Permanent Light Element	24V AC/DC	max. 30mA	max. 500mA	-20 to 50°C [-4 to 122°F] IP65	up to 100,000h	-	Polycarbonate	58 [2.05]
64420075	Green	PDF			max. 25mA						
64430075	Yellow	PDF			max. 30mA						
64440075	Clear	PDF			max. 25mA						
64450075	Blue	PDF			max. 25mA						
64445055	Multi	PDF		24VDC	max. 120mA			up to 50,000h			63 [2.22]
64410067	Red	PDF		115VAC	max. 20mA	-	-20 to 50°C [-4 to 122°F] IP65	up to 100,000h	-	Polycarbonate	58 [2.05]
64420067	Green	PDF									
64430067	Yellow	PDF									
64440067	Clear	PDF									
64450067	Blue	PDF									
64412055	Red	PDF	LED Flashing Light Element	24VDC	35mA	max. 500mA	-20 to 50°C [-4 to 122°F] IP65	up to 50,000h	1Hz on for 2x10 ms	Polycarbonate	75 [2.65]
64422055	Green	PDF									
64432055	Yellow	PDF									
64442055	Clear	PDF									
64452055	Blue	PDF									
64310055	Red	PDF	Xenon Flashing Light Element	24VDC	125mA	max. 500mA	-20 to 50°C [-4 to 122°F] IP65	up to 4,000,000 flashes	1Hz on for 10 ms	Polycarbonate	73 [2.57]
64320055	Green	PDF									
64330055	Yellow	PDF									
64340055	Clear	PDF									
64350055	Blue	PDF									
64310067	Red	PDF		115VAC	22mA	-	-20 to 50°C [-4 to 122°F] IP65	up to 4,000,000 flashes	1Hz on for 10 ms	Polycarbonate	74 [2.61]
64320067	Green	PDF									
64330067	Yellow	PDF									
64340067	Clear	PDF									
64350067	Blue	PDF									
64411075	Red	PDF	LED Blinking Light Element	24V AC/DC	max. 30mA	max. 500mA	-20 to 50°C [-4 to 122°F] IP65	up to 100,000h	1Hz on for 550 ms	Polycarbonate	58 [2.05]
64421075	Green	PDF			max. 25mA						
64431075	Yellow	PDF			max. 30mA						
64441075	Clear	PDF			max. 25mA						
64451075	Blue	PDF			max. 25mA						
64411067	Red	PDF		115VAC	max. 20mA	-	-20 to 50°C [-4 to 122°F] IP65	up to 100,000h	1Hz on for 550 ms	Polycarbonate	58 [2.05]
64421067	Green	PDF									
64431067	Yellow	PDF									
64441067	Clear	PDF									
64451067	Blue	PDF									
64413075	Red	PDF	LED Rotating Light Element	24V AC/DC	max. 40mA	max. 500mA	-20 to 50°C [-4 to 122°F] IP65	up to 100,000h	120 rotations per minute	Polycarbonate	67 [2.36]
64423075	Green	PDF									
64433075	Yellow	PDF									
64443075	Clear	PDF									
64453075	Blue	PDF									



Terminal Pin Activation of Multi-Color LED Permanent Light Element

Pin 1	Pin 2	Pin 3	Function
24V	-	-	Red
-	24V	-	Green
24V	24V	-	Yellow
-	-	24V	Blue
24V	24V	24V	White
24V	-	24V	Violet
-	24V	24V	Turquoise

Bulbs for Incandescent Permanent Optical Element

Part Number	Description	Wattage	Voltage	Life Duration
95584035	Bulb for incandescent light	5W	24VDC	up to 5,000h
95584038			230VAC	
95584057	BA15d Bayonet Socket		115VAC	



Configuring Your KombiSIGN 71 Stack Light

STEP 1

Select the required optical elements for your application

STEP 2

Select the optional audible elements for your application



Optical Signal Elements

- Incandescent Permanent Light
- LED Permanent Light
- LED Flashing Light
- LED Blinking Light
- LED Rotating Light
- Xenon Flashing Light

Audible Signal Elements

- Buzzer Element
- Siren Element

Plain Base Mount

Tube Base Mount

STEP 3

Select the correct terminal element for your mounting option (includes cap)



Plain Base Mount

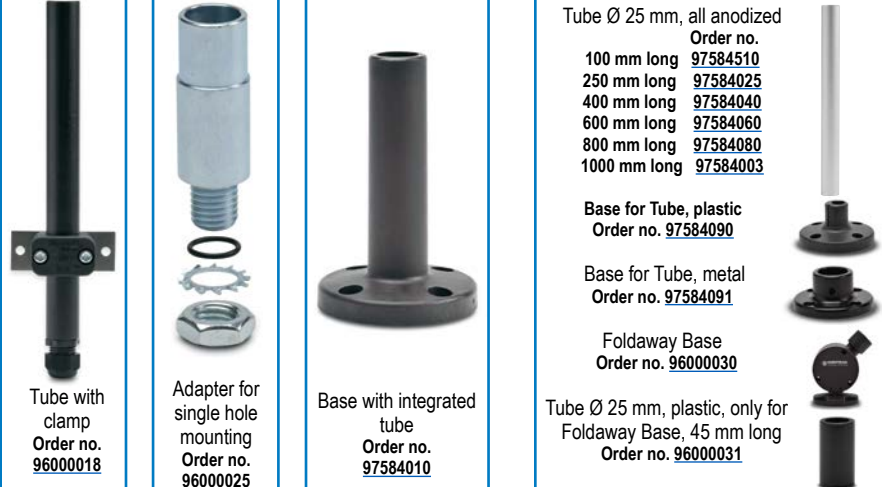
- Screw terminal
Order no. [64082000](#)
- CAGE CLAMP® terminal
Order no. [64080000](#)

Tube Base Mount

- Screw terminal
Order no. [64083000](#)
- CAGE CLAMP® terminal
Order no. [64081000](#)

STEP 4

Where appropriate, select a base and the desired tube length (only for tube mounting)



Plain Base Mount

- Tube with clamp
Order no. [96000018](#)
- Adapter for single hole mounting
Order no. [96000025](#)
- Base with integrated tube
Order no. [97584010](#)

Tube Base Mount

- Tube Ø 25 mm, all anodized
Order no. [97584510](#)
100 mm long [97584025](#)
250 mm long [97584040](#)
400 mm long [97584060](#)
600 mm long [97584080](#)
800 mm long [97584090](#)
1000 mm long [97584003](#)
- Base for Tube, plastic
Order no. [97584090](#)
- Base for Tube, metal
Order no. [97584091](#)
- Foldaway Base
Order no. [96000030](#)
- Tube Ø 25 mm, plastic, only for Foldaway Base, 45 mm long
Order no. [96000031](#)

STEP 5

Where appropriate, select the bracket and the contact box.



Plain Base Mount

- Contact box with side cable exit
Order no. [97584001](#)
- Bracket for base mounting
Order no. [96000002](#)
- Bracket for 1-sided mounting
Order no. [97584085](#)
- Bracket for 2-sided mounting
Order no. [97584086](#)

Tube Base Mount

- Contact box with side cable exit
Order no. [97584001](#)
- Contact box with magnetic base and side cable exit
Order no. [97584004](#)
- Bracket for base mounting with concealed cable entry
Order no. [96000014](#)
- Bracket for tube mounting
Order no. [96000001](#)

Werma Modular Stack Lights Overview



WERMA

S I G N A L T E C H N I K

Description

WERMA's modular stack light system offers total choice and flexibility as it allows for a completely free combination of optical and audible signal elements. The bayonet mechanism allows elements to be mechanically and electrically connected within seconds.

This means that elements can be safely and easily changed (contact-voltage proof) without the need for tools.

Typical product applications include; machine tools, packaging machines, conveyor systems, printing machines, loading docks, retail centers (check outs), queuing indicators for theme parks, and more.

Product highlights:

- Signal elements in common voltages (24V DC and 115V AC)
- Modular system allows combination as required
- Two different sizes (70 and 50 mm diameter)
- Five colors available
- Wide range of audible elements
- Diverse and flexible solutions

Simple assembly with bayonet mechanism

- Simple mounting and removal of the elements
- New combinations at the twist of a hand
- Tool-free bulb change
- Position marks to guide alignment



Werma Stack Lights Family Overview

KombiSIGN 71

Modular IP65-rated stack light system with 70 mm diameter for use in standard applications.

KS 71 stack lights are available in 5 colors and multiple light effects (permanent, blinking, rotating, flashing). Multiple light sources (incandescent, LED, Xenon tube) and a wide variety of mountings are available. Combine up to 5 elements per terminal. Various terminal design choices are available as well as multiple voltages and audible elements up to 105 dB.

KS 71 Terminal Elements



Screw terminals



CAGE CLAMP® terminals

KombiSIGN 50

Modular IP54-rated stack light system with 50 mm diameter for use on smaller machines.

KS 50 stack lights are available in 5 colors with either permanent or blinking light effects in multiple voltages. A choice of incandescent or LED light sources is available as well as an 80 dB audible element. Elements can be combined in a variety of mountings, up to 4 elements per mounting for 360° of visibility.

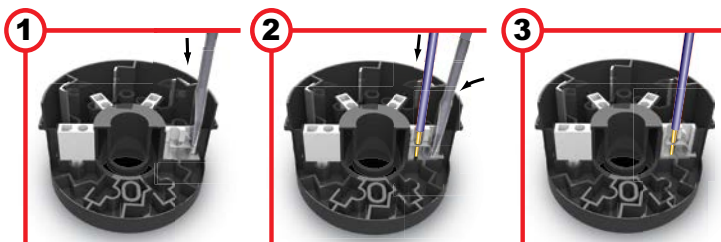
KS 50 Terminal Element



Screw terminal

Safe and Efficient Connection Thanks to CAGE CLAMP® Technology

Terminal elements with CAGE CLAMP® technology enable leads to be quickly and easily wired, guaranteeing a secure and reliable contact.



Insert screwdriver at a slight angle into opening as far as possible.

Open spring-loaded clamp with the help of the screwdriver and insert wire as far as possible.

Remove screwdriver - the wire is firmly clamped.

CAGE CLAMP® is a registered trademark of WAGO Kontakttechnik GmbH.