

# KS 50 Elements Quick Selection Guide

STEP 1 - Optical Elements Quick Selection Guide				
Type of Light	Part Number	Color	Operating Voltage	Price
Incandescent Permanent*	<a href="#">84610000</a>	Red	12-240V AC/DC	\$;0a3l:
	<a href="#">84620000</a>	Green		\$0a3?:
	<a href="#">84630000</a>	Yellow		\$;0a3,:
	<a href="#">84640000</a>	Clear		\$0a40:
	<a href="#">84650000</a>	Blue		\$0a41:
Bulbs	<a href="#">95584035</a>	Clear	24VDC	\$eca:
	<a href="#">95584038</a>	Clear	230VAC	\$ecb:
	<a href="#">95584057</a>	Clear	115VAC	\$ecc:
LED Permanent	<a href="#">84810055</a>	Red	24V AC/DC	\$0a42:
	<a href="#">84820055</a>	Green		\$0a46:
	<a href="#">84830055</a>	Yellow		\$0a78:
	<a href="#">84840055</a>	Clear		\$00a7c:
	<a href="#">84850055</a>	Blue	115VAC	\$00a7g:
	<a href="#">84810067</a>	Red		\$0a43:
	<a href="#">84820067</a>	Green		\$0a47:
	<a href="#">84830067</a>	Yellow		\$0a79:
	<a href="#">84840067</a>	Clear		\$00a7d:
LED Blinking Light	<a href="#">84850067</a>	Blue	24V AC/DC	\$00a7h:
	<a href="#">84811075</a>	Red		\$0a45:
	<a href="#">84821075</a>	Green		\$0a77:
	<a href="#">84831075</a>	Yellow		\$0a7b:
	<a href="#">84841075</a>	Clear	115VAC	\$;00a7f:
	<a href="#">84851075</a>	Blue		\$-00a7j:
	<a href="#">84811067</a>	Red		\$0a44:
	<a href="#">84821067</a>	Green		\$0a76:
	<a href="#">84831067</a>	Yellow		\$0a7a:
LED Flashing Light Element	<a href="#">84841067</a>	Clear	24VDC	\$00a7e:
	<a href="#">84851067</a>	Blue		\$-00a7i:
	<a href="#">84812055</a>	Red		\$00e34:
	<a href="#">84822055</a>	Green		\$00e35:
	<a href="#">84832055</a>	Yellow		\$00e36:
	<a href="#">84842055</a>	Clear		\$00e37:
	<a href="#">84852055</a>	Blue		\$00e38:

\* Note: Bulbs are required for permanent incandescent optical element

STEP 2 - Audible Elements Quick Selection Guide					
Part Number	Description	Voltage	Tone Frequency	Maximum Volume	Price
<a href="#">84900075</a>	Buzzer element	24V AC/DC	2.1 kHz	80dB	\$0a7k:
<a href="#">84900077</a>		115V AC/DC			\$-0a7l:

STEP 3 - Terminal Element Quick Selection			
Part Number	Description	Mounting	Price
<a href="#">84500000</a>	Screw terminal element for KS 50	surface, tube, single-hole or bracket mount	\$0a3#:

STEP 4 - Mounting Options/Accessories Quick Selection		
Part Number	Description	Price
<a href="#">97584510</a>	Anodized tube, 100mm [3.94 in] long	\$;-0ej,:
<a href="#">97584025</a>	Anodized tube, 250mm [9.84 in] long	\$;-0ejl:
<a href="#">97584040</a>	Anodized tube, 400mm [15.75 in] long	\$-0ej?:
<a href="#">97584060</a>	Anodized tube, 600mm [23.62 in] long	\$-0ej_:
<a href="#">97584080</a>	Anodized tube, 800mm [31.49 in] long	\$-0ej#:
<a href="#">97584003</a>	Anodized tube, 1000mm [39.37 in] long	\$;-0ejj:
<a href="#">97584090</a>	Plastic base for 25mm [0.98 in] diameter tube	\$-0eai:
<a href="#">97584091</a>	Metal base for 25mm [0.98 in] diameter tube	\$0ea9:
<a href="#">96000030</a>	Foldaway base for 25mm [0.98 in] diameter tube	\$0ea8:
<a href="#">97584501</a>	Base for surface mounting, includes rubber seal	\$;0a3j:
<a href="#">97584502</a>	Bracket for wall mounting	\$;0a3f:

STEP 5 - Contact Boxes & Brackets Quick Selection		
Part Number	Description	Price
<a href="#">97584001</a>	Contact box with side exit cable	\$;04[h:
<a href="#">97584004</a>	Contact box with magnetic base and side exit cable	\$;-04[j:
<a href="#">96000014</a>	Bracket for base mounting with concealed cable entry	\$05ha:
<a href="#">96000001</a>	Bracket for base mounting	\$05h8:



KS 50 LED  
Light Element

# KS 50 Optical Elements Specifications

KS 50 Optical Elements Technical Specifications												
Part Number	Color	Drawing Link	Description	Operating Voltage	Current Consumption	Starting Current	Operating Temp/ Protection	Life Duration	Flash Frequency	Housing Material	Weight g [oz]	
<a href="#">84610000</a>	Red	<a href="#">PDF</a>	Incandescent Permanent Light	12-240V AC/DC (bulb sold separately)	Depends on bulb selection. (bulb sold separately)	-	-20 to 50°C [-4 to 122°F] IP54	up to 5,000h	-	Polycarbonate	40 [1.41]	
<a href="#">84620000</a>	Green	<a href="#">PDF</a>										
<a href="#">84630000</a>	Yellow	<a href="#">PDF</a>										
<a href="#">84640000</a>	Clear	<a href="#">PDF</a>										
<a href="#">84650000</a>	Blue	<a href="#">PDF</a>										
<a href="#">84810055</a>	Red	<a href="#">PDF</a>	LED Permanent Light Element	24V AC/DC	max. 45mA	max. 500mA	-20 to 50°C [-4 to 122°F] IP54	up to 100,000h	-	Polycarbonate	45 [1.59]	
<a href="#">84820055</a>	Green	<a href="#">PDF</a>										
<a href="#">84830055</a>	Yellow	<a href="#">PDF</a>										
<a href="#">84840055</a>	Clear	<a href="#">PDF</a>										
<a href="#">84850055</a>	Blue	<a href="#">PDF</a>										
<a href="#">84810067</a>	Red	<a href="#">PDF</a>		115VAC	max. 25mA	-	-20 to 50°C [-4 to 122°F] IP54	up to 100,000h	-	Polycarbonate	45 [1.59]	
<a href="#">84820067</a>	Green	<a href="#">PDF</a>										
<a href="#">84830067</a>	Yellow	<a href="#">PDF</a>										
<a href="#">84840067</a>	Clear	<a href="#">PDF</a>										
<a href="#">84850067</a>	Blue	<a href="#">PDF</a>										
<a href="#">84811075</a>	Red	<a href="#">PDF</a>	LED Blinking Light Element	24V AC/DC	max. 25mA	max. 500mA	-20 to 50°C [-4 to 122°F] IP54	up to 100,000h	1Hz on for 550ms	Polycarbonate	45 [1.59]	
<a href="#">84821075</a>	Green	<a href="#">PDF</a>										
<a href="#">84831075</a>	Yellow	<a href="#">PDF</a>										
<a href="#">84841075</a>	Clear	<a href="#">PDF</a>										
<a href="#">84851075</a>	Blue	<a href="#">PDF</a>										
<a href="#">84811067</a>	Red	<a href="#">PDF</a>		115VAC	max. 25mA	-	-20 to 50°C [-4 to 122°F] IP54	up to 100,000h	1Hz on for 550ms	Polycarbonate	45 [1.59]	
<a href="#">84821067</a>	Green	<a href="#">PDF</a>										
<a href="#">84831067</a>	Yellow	<a href="#">PDF</a>										
<a href="#">84841067</a>	Clear	<a href="#">PDF</a>										
<a href="#">84851067</a>	Blue	<a href="#">PDF</a>										
<a href="#">84812055</a>	Red	<a href="#">PDF</a>	LED Flashing Light Element	24VDC	45mA	max. 500mA	-20 to 50°C [-4 to 122°F] IP54	up to 50,000h	1Hz on for 10ms	Polycarbonate	56 [1.98]	
<a href="#">84822055</a>	Green	<a href="#">PDF</a>			40mA							
<a href="#">84832055</a>	Yellow	<a href="#">PDF</a>			45mA							
<a href="#">84842055</a>	Clear	<a href="#">PDF</a>			40mA							
<a href="#">84852055</a>	Blue	<a href="#">PDF</a>			40mA							



**KS 50 Incandescent Permanent Light Element**



Bulbs for Incandescent Permanent Optical Element				
Part Number	Description	Wattage	Voltage	Life Duration
<a href="#">95584035</a>	Bulb for Incandescent Light BA15d Bayonet Socket	5W	24VDC	up to 5,000h
<a href="#">95584038</a>			230VAC	
<a href="#">95584057</a>			115VAC	

# Configuring Your KombiSIGN 50 Stack Light

## STEP 1

Select the required optical elements for your application



### Optical Signal Elements

- Incandescent Permanent Light
- LED Permanent Light
- LED Blinking Light
- LED Flashing Light

### Audible Signal Elements

- Buzzer Element

## STEP 2

Select the optional audible element for your application



Terminal element for surface, tube, single hole and bracket mounting

Order no.  
84500000

## STEP 3

Select the terminal element for your mounting option (includes cap)

### Base/Bracket Mounting



Bracket for wall mounting

Order no.  
97584502



Base for surface mounting, includes rubber seal

Order no.  
97584501

### Tube Mounting

Tube Ø 25mm, all anodized

	Order no.
100 mm long	<u>97584510</u>
250 mm long	<u>97584025</u>
400 mm long	<u>97584040</u>
600 mm long	<u>97584060</u>
800 mm long	<u>97584080</u>
1000 mm long	<u>97584003</u>

Base for Tube, plastic  
Order no. 97584090

Base for Tube, metal  
Order no. 97584091

Foldaway Base  
Order no. 96000030



## STEP 4

Select the appropriate mounting option and accessories



Contact box with side cable exit  
Order no. 97584001



Contact box with magnetic base and side cable exit  
Order no. 97584004



Bracket for base mounting with concealed cable entry  
Order no. 96000014



Bracket for base mounting  
Order no. 96000001

## STEP 5

Where appropriate, select the bracket and the contact box

# Werma Modular Stack Lights Overview



# WERMA

S I G N A L T E C H N I K

## Description

WERMA's modular stack light system offers total choice and flexibility as it allows for a completely free combination of optical and audible signal elements. The bayonet mechanism allows elements to be mechanically and electrically connected within seconds.

This means that elements can be safely and easily changed (contact-voltage proof) without the need for tools.

Typical product applications include; machine tools, packaging machines, conveyor systems, printing machines, loading docks, retail centers (check outs), queuing indicators for theme parks, and more.

## Product highlights:

- Signal elements in common voltages (24V DC and 115V AC)
- Modular system allows combination as required
- Two different sizes (70 and 50 mm diameter)
- Five colors available
- Wide range of audible elements
- Diverse and flexible solutions

## Simple assembly with bayonet mechanism

- Simple mounting and removal of the elements
- New combinations at the twist of a hand
- Tool-free bulb change
- Position marks to guide alignment





# Werma Stack Lights Family Overview

## KombiSIGN 71

Modular IP65-rated stack light system with 70 mm diameter for use in standard applications.

KS 71 stack lights are available in 5 colors and multiple light effects (permanent, blinking, rotating, flashing). Multiple light sources (incandescent, LED, Xenon tube) and a wide variety of mountings are available. Combine up to 5 elements per terminal. Various terminal design choices are available as well as multiple voltages and audible elements up to 105 dB.

### KS 71 Terminal Elements



Screw terminals



CAGE CLAMP® terminals

## KombiSIGN 50

Modular IP54-rated stack light system with 50 mm diameter for use on smaller machines.

KS 50 stack lights are available in 5 colors with either permanent or blinking light effects in multiple voltages. A choice of incandescent or LED light sources is available as well as an 80 dB audible element. Elements can be combined in a variety of mountings, up to 4 elements per mounting for 360° of visibility.

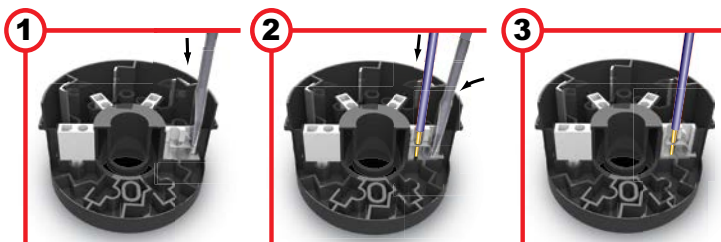
### KS 50 Terminal Element



Screw terminal

## Safe and Efficient Connection Thanks to CAGE CLAMP® Technology

Terminal elements with CAGE CLAMP® technology enable leads to be quickly and easily wired, guaranteeing a secure and reliable contact.



Insert screwdriver at a slight angle into opening as far as possible.

Open spring-loaded clamp with the help of the screwdriver and insert wire as far as possible.

Remove screwdriver - the wire is firmly clamped.

CAGE CLAMP® is a registered trademark of WAGO Kontakttechnik GmbH.