

# Louvers and Filters for Metal Enclosures

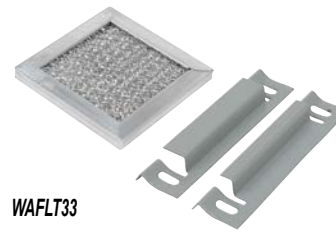


## Louver Vent Kits



Louver vents provide ventilation or cooling in metal enclosures where excessive moisture or excessive internal heat is a problem. These kits are fabricated from 14-gauge steel and include all hardware for mounting. Kits are easily field installed by making a cutout of the proper size and attaching the louver vent in place. Finish is ANSI 61 gray polyester powder finish over phosphatized surfaces or 316 stainless steel. Filter kit must be ordered separately.

## Filter Kits for Louver Vent Kits



Aluminum filters are good for stopping dust and dirt from penetrating the enclosures. These filters are designed to mount behind WAVK series louver vent kits. Mounting holes on filter brackets align with mounting holes on louver kits. Kit consists of aluminum filter, brackets and all necessary hardware for installation. Louver kit must be ordered separately.

### Shipping Schedule

Same day 1 - 5 days 1 - 7 days 1 - 15 days 1 - 20 days

Color indicates shipping lead time in business days.

### Louver Vent and Filter Kits

Louver Kit 14-gauge Steel	Price	Louver Kit 316 SS	Price	Filter Kit	Price	No. of Louvers	No. of Louvers Rows	Louver Length in [mm]	A in [mm]	B in [mm]	C in [mm]	D in [mm]
<a href="#">WAVK0808</a>	Retired	<a href="#">WAVK0203SSA</a>	Retired	—	—	3	1	2.00 [51]	3.25 [83]	3.25 [83]	2.00 [51]	2.00 [51]
<a href="#">WAVK0303</a>	\$-0ejc:	<a href="#">WAVK0303SSA</a>	\$-00ejd:	<a href="#">WAFLT33</a>	\$-0elj:	3	1	3.00 [76]	3.87 [98]	4.50 [114]	2.62 [67]	3.25 [83]
<a href="#">WAVK0304</a>	\$-0eje:	<a href="#">WAVK0304SSA</a>	\$-00ejf:	<a href="#">WAFLT34</a>	\$-0elf:	4	1	3.00 [76]	4.75 [121]	4.50 [114]	3.50 [89]	3.25 [83]
<a href="#">WAVK0404</a>	\$-0ejg:	<a href="#">WAVK0404SSA</a>	\$-00ejh:	<a href="#">WAFLT44</a>	\$-0el_:	4	1	4.00 [102]	5.62 [143]	5.50 [140]	4.37 [111]	4.25 [108]
<a href="#">WAVK0604</a>	Retired	<a href="#">WAVK0604SSA</a>	Retired	<a href="#">WAFLT64</a>	Retired	8	1	3.00 [76]	5.62 [143]	7.50 [191]	4.37 [111]	6.25 [159]
<a href="#">WAVK0606</a>	\$-0ejk:	<a href="#">WAVK0606SSA</a>	\$-00ejl:	<a href="#">WAFLT66</a>	\$-0ell:	12	1	3.00 [76]	7.87 [200]	7.50 [191]	6.62 [168]	6.25 [159]
<a href="#">WAVK0806</a>	Retired	<a href="#">WAVK0806SSA</a>	Retired	<a href="#">WAFLT86</a>	Retired	12	2	4.00 [102]	8.18 [208]	9.50 [241]	6.93 [176]	8.25 [210]
<a href="#">WAVK0808</a>	Retired	<a href="#">WAVK0808SSA</a>	Retired	<a href="#">WAFLT88</a>	Retired	16	2	4.00 [102]	10.56 [268]	9.50 [241]	9.31 [236]	8.25 [210]
<a href="#">WAVK0812</a>	Retired	<a href="#">WAVK0812SSA</a>	Retired	<a href="#">WAFLT812</a>	Retired	24	2	4.00 [102]	15.31 [389]	9.50 [241]	14.06 [357]	8.25 [210]

Note: Dimensions in inches [millimeters].

## Dimensions

