

# Accessories – Varioline Enclosure LED Lights with Socket



## Applications

The Varioline is a powerful and compact LED light capable of illuminating even very large enclosures in their full depth and height. Its integrated socket allows for the power connection of laptops and diagnostic devices. The glare-free, 120° rotatable light tube uses mid-power LEDs with a service life of 60,000 hours. The emitted daylight color of 6,500K provides safety for the user by a natural and non-fading color reproduction.

## Features

- High luminous flux
- Integrated socket
- Integrated power unit
- Durable and maintenance-free LED technology
- Up to eight units can be daisy-chained
- On/off switch, motion sensor, connection for external door switch or unswitched
- Magnet or screw mount

## Listings

- UL Recognized File E234324



**LED 121 On/Off Switch and screw mount 121040-00**



**LED 122 Movement Sensor and magnet mount 122040-30**

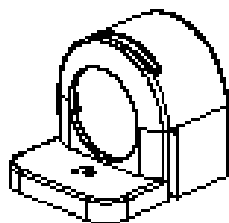
Varioline Enclosure LED Lights with Socket Specifications		
	Size 1	Size 2
<b>Length</b>	19.68in [500mm]	27.56in [700mm]
<b>Power Consumption</b>	11W Max.	16W Max.
<b>Socket Nominal Current</b>	15A	
<b>Operating Voltage</b>	AC 120V , 50/60 Hz (min. AC 110 , max. AC 130V)	
<b>Luminosity</b>	1,080 Lm	1,730 Lm
<b>Lamp Type</b>	LED	
<b>Angle or Rotation</b>	120°	
<b>Light Color</b>	Daylight	
<b>Color Temperature</b>	6,500 K	
<b>Service Life</b>	60,000 hrs. at 68°F [20°C]	
<b>Connection</b>	3-pole connector with snap lock; AC: max. 16A / AC 240V, color: white	
<b>Housing</b>	Plastic, transparent	
<b>Mounting Hardware (screw mount only)</b>	M5 screws, 2 lb-in max.	
<b>Operating Temperature</b>	-22 to 104°F [-30 to 40°C]	
<b>Storage Temperature</b>	-40 to 185°F [-40 to 85°C]	
<b>Operating / Storage Humidity</b>	Max. 90% RH (non-condensing)	
<b>Protection Class</b>	I (earthed)	
<b>Protection Type</b>	IP20	
<b>Approvals</b>	UL Recognized File E234324, VDE, CE	
<b>Weight</b>	Approx. 10.6 oz [0.3kg]	Approx. 14.1oz [0.4kg]

# Accessories – Varioline Enclosure LED Lights with Socket

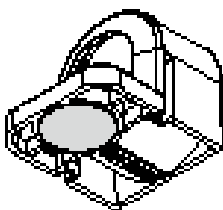


Varioline Enclosure LED Lights with Socket						
Size 1 – 19.68in [500mm]						
Magnet Mount	Price	Drawing Link	Screw Mount	Price	Drawing Link	Switch Type
<a href="#">121040-30</a>	\$-0418d:	<a href="#">PDF</a>	<a href="#">121040-00</a>	\$-0418c:	<a href="#">PDF</a>	on/off
<a href="#">121140-30*</a>	\$-0418f:	<a href="#">PDF</a>	<a href="#">121140-00</a>	\$-0418e:	<a href="#">PDF</a>	PIR motion sensor
<a href="#">121240-30**</a>	\$-0418h:	<a href="#">PDF</a>	<a href="#">121240-00</a>	\$-0418g:	<a href="#">PDF</a>	connection for external
<a href="#">121340-30</a>	\$-0418j:	<a href="#">PDF</a>	<a href="#">121340-00</a>	\$-0418i:	<a href="#">PDF</a>	no
*Approximately 5 minute fixed switch-on duration.						
** Requires plug 264090						

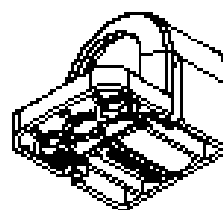
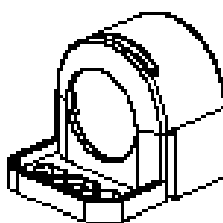
Varioline Enclosure LED Lights with Socket						
Size 2 – 27.56 [700mm]						
Magnet Mount	Price	Drawing Link	Screw Mount	Price	Drawing Link	Switch Type
<a href="#">122040-30</a>	\$-0418l:	<a href="#">PDF</a>	<a href="#">122040-00</a>	\$-0418k:	<a href="#">PDF</a>	on/off
<a href="#">122140-30*</a>	\$-0418o:	<a href="#">PDF</a>	<a href="#">122140-00</a>	\$-0418n:	<a href="#">PDF</a>	PIR motion sensor
<a href="#">122240-30**</a>	\$-0418q:	<a href="#">PDF</a>	<a href="#">122240-00</a>	\$-0418p:	<a href="#">PDF</a>	connection for external
<a href="#">122340-30</a>	\$-0418t:	<a href="#">PDF</a>	<a href="#">122340-00</a>	\$-0418s:	<a href="#">PDF</a>	no
*Approximately 5 minute fixed switch-on duration.						
** Requires plug 264090						



View of Magnet Mount



View of Screw Mount



Close up view

# Accessories – Varioline Enclosure LED Lights with Socket



## Power cable with input connector and wire leads



244423

Part Number	Price	Description	Length	Voltage	Color
<a href="#">244423</a>	\$,-417[	Connection cable 3 x 16 AWG with input connector	13.1 ft (4.0 m)	AC	Connectors: white; Cable: white

## Varioline Power Input and Output Connectors

(Field Wireable)



264090



264091



264093

Part Number	Price	Description	Voltage	Color
<a href="#">264090</a>	\$-417_:	External Switch Connector	AC	Gray
<a href="#">264091</a>	\$-417#:	Input Connector		White
<a href="#">264093</a>	\$,-417!:	Daisy Chain Connector		
*Required for External Connection Switch Varioline lights.				

## Extension Cable with 2 Connectors (Input and Output) for Daisy Chain Connection



244359

Part Number	Price	Description	Length	Voltage	Color
<a href="#">244359</a>	\$,04ta:	Extension cable 2 x 15 AWG with 2 connectors	3.2 ft (1.0 m)	AC	Connectors: white; Cable: white