



# Remote Access Solution

## Cellular Antennas for [SE-SL3011-4GG](#) Routers



### [SE-ANT110](#) \$1o8k:

STRIDE whip/tilt LTE antenna, connector mount.



### [SE-ANT130](#) \$-1o8l:

STRIDE whip/straight LTE antenna, magnetic base mount, 9.8ft/3m cable length.



### [SE-ANT150](#) \$1o8n:

STRIDE dome LTE antenna, IP67, panel mount, 9.8ft/3m cable length.

4G LTE Antenna Specifications			
	<i><b>SE-ANT110</b></i>	<i><b>SE-ANT130*</b></i>	<i><b>SE-ANT150</b></i>
<b>Price</b>	\$1o8k:	\$-1o8l:	\$1o8n:
<b>Fits</b>	<a href="#">SE-SL3011-4GG</a>		
<b>Antenna Connector</b>	SMA (M)		
<b>Application</b>	LTE, CDMA, GSM, HSPA, UMTS, GPRS		
<b>Impedance</b>	50Ω		
<b>Antenna Type</b>	whip, tilt	whip, straight	dome
<b>Cable Length</b>	N/A	3m [9.8 ft]	3m [9.8 ft]
<b>Frequency Range</b>	700–960MHz / 1.71–3.8 GHz	700–960MHz / 1.71–3.5 GHz	700–960MHz / 1.71–2.7 GHz
<b>Gain</b>	-3.0 dBi / 0.9 dBi	-2.5dBi / 0.1dBi	1.2 dBi / 3.2 dBi
<b>Height</b>	2.84 in	13 in	1.89 in
<b>IP Rating</b>	–	–	IP67
<b>Maximum Power</b>	10W	50W	5W
<b>Mounting Screw Torque</b>	NA	NA	2.94 N·m

\* Gains listed are based on the antenna being mounted on a suitable ground plane.



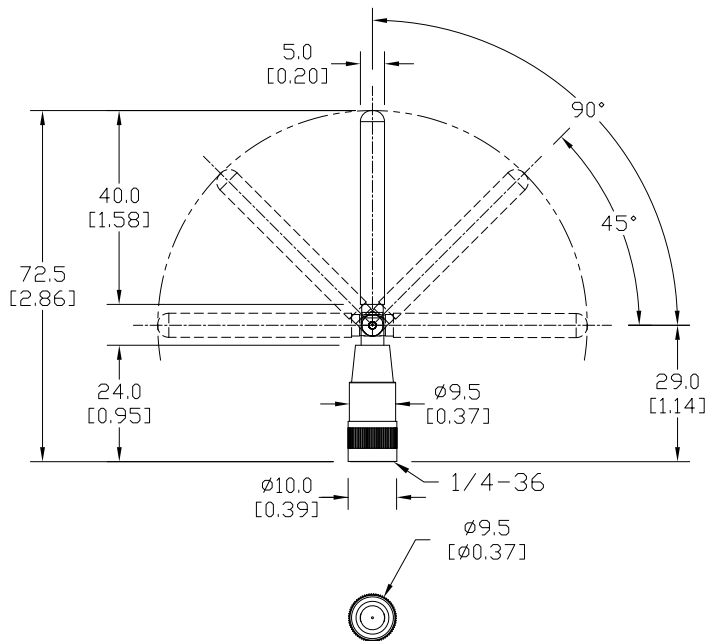
# Remote Access Solution

## Cellular Antennas for SE-SL3011-4G and SE-SL3011-4GG Routers

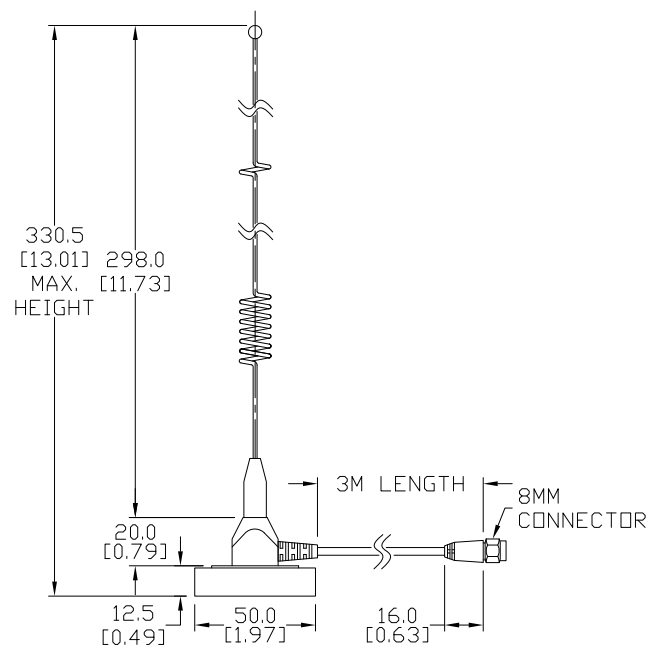
### Dimensions

mm [inches]

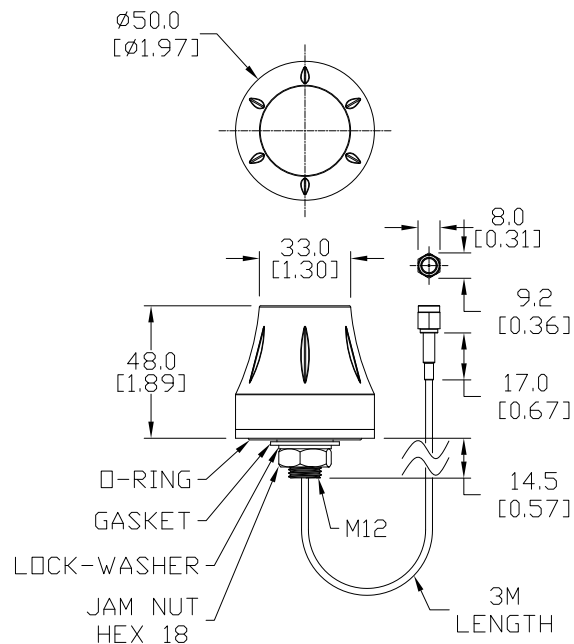
#### SE-ANT110:



#### SE-ANT130:



#### SE-ANT150:



See our website: [www.AutomationDirect.com](http://www.AutomationDirect.com) for complete engineering drawings.