

Contrinex Safety Light Curtains Access Control



Safety light curtain with 300mm or 400mm beam gap

- Protective height from 832 to 1232 mm [32.76 to 48.5 in]
- Operating distance from 1 to 15 m [3.28 to 49.21 ft], 10 to 50 m [32.81 to 164.04 ft] – configurable
- M12 quick-disconnect (order cable separately)
- Dual PNP outputs
- Sold as sender/receiver kits
- Mounting brackets included with all units.
- Instruction manual and testing rod included with sender unit.
- IP65, IP67 rated
- Type 4 and Category 4 PLE



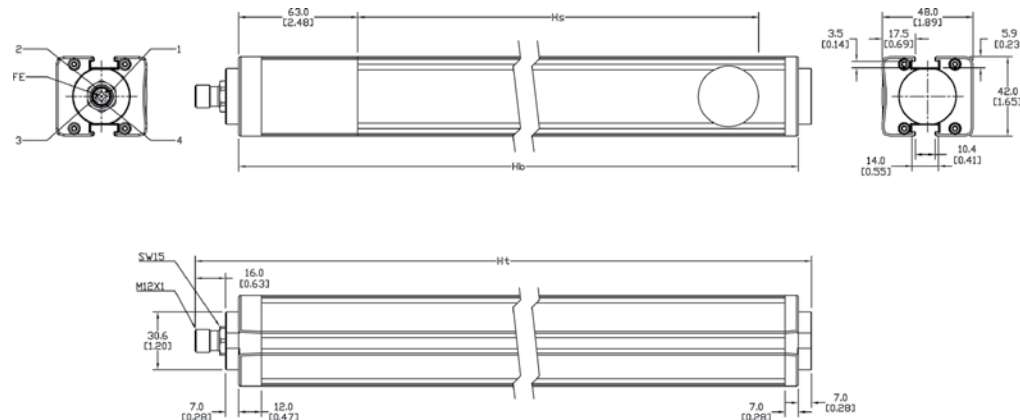
YCA-50 Series Safety Light Curtain Selection Table

Part Number	Price	Protective Height (Hs) mm [in]	Housing Height (Hb) mm [in]	Total Height Ht mm [in]	No. of Beams	Current Consumption [mA]	Response Time [ms]	MTTFd (years)	DC _{avg}	Weight g [lb]	Resolution mm [in]
YCA-50K4-3400-G012	\$-0414a:	832 [32.76]	995 [39.17]	1025 [40.35]	3	35 (sender) 75 (receiver)	4.2	108	96.9%	4280 [9.44]	400 [15.75]
YCA-50K4-4300-G012	\$-0414b:	932 [36.69]	1124 [44.25]	1154 [45.43]	4	35 (sender) 75 (receiver)	5.0	100	96.9%	4840 [10.67]	300 [11.81]
YCA-50K4-4400-G012	\$-0414c:	1232 [48.50]	1382 [54.41]	1412 [55.59]	4	35 (sender) 75 (receiver)	5.0	100	96.9%	5940 [13.10]	400 [15.75]

Note: AutomationDirect does not recommend using these light curtains with any device other than our Safety Relay Light Curtain Controllers.

Dimensions

mm [in]



Pin outs

Assignment	Function	Pins/Wires on Sender		Pins/Wires on Receiver	
		M12	Cable	M12	Cable
Supply Voltage	24VDC for channel 1; 0V for channel 2	1	Brown	1	Brown
Supply Voltage	0V for channel 1; 24VDC for channel 2	3	Blue	3	Blue
Sensing Range Selection	24V: 1-15m 0V: 10-50m	2	White	–	–
Sensing Range Selection	24V: 10-50m 0V: 1-15m	4	Black	–	–
Output	OSSD1 (Output Single Switching Device)	–	–	2	White
Output	OSSD2 (Output Single Switching Device)	–	–	4	Black
Functional Earth	Shield (Ground)	FE	Gray	FE	Gray

Note: Cable color represents standard industrial pinout. Confirm the specific color and pinout during installation.

Contrinex Safety Light Curtains

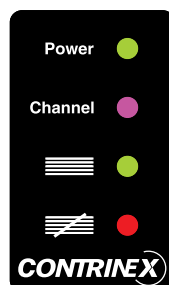
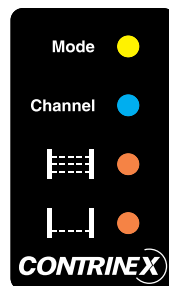
Access Control

YCA-50 Series Safety Light Curtain Specifications

Beam Gap	300 or 400mm
Safety Level	Category 4, PL e (EN/ISO 13849-1). Type 4 (IEC 61496-1/2)
Supply Voltage	24VDC \pm 15%
Current Consumption	See Selection Table
Outputs	2 PNP outputs, short-circuit protected
Output Current	Maximum 0.2 amps per output (@ 50°C/122°F)
Output Voltage ON minimum	1.0 V less than the supplied operating voltage at 25°C (77°F)
Output Voltage OFF	<1.0 V
Leakage Current	< 1mA
Maximum Load Inductance	100mH
Response Time	See Selection Table
Sender Wavelength	IR 880nm
Operating Range	1 to 15m / 10 to 50m (configurable)
Protection Class	Class III (IEC 61140)
Startup Delay	< 0.5 seconds
Vibration Resistance	10 to 55Hz, 0.35 mm amplitude, 1 octave/min., 20 sweeps for each axis
Shock Resistance	10g during 16ms, 1000 times for each axis
Light Immunity	Incandescent lamp: 3000lx max. (light intensity on receiver surface) Xenon flash tube: flash duration 1.2 ms max. with a frequency of 2Hz max. (TS 61496)
Operating Temperature	0 to 50°C (32 to 122°F)
Storage Temperature	-25 to 70°C (-13 to 158°F)
Humidity	15 to 95% (non-condensing)
Degree of Protection (EN 60529)	IP65, IP67
Ambient Brightness	TS 61496-2
Reference Standards	IEC 61496-1, IEC 61496-2
Housing Material	Aluminum, PMMA (Polymethylmethacrylate [acrylic]) front screen
Material of Upper and Lower Cover	PA (Polyamide [nylon]) + 30% fiberglass
Material of Optics	PMMA (Polymethylmethacrylate [acrylic])
Cable Runs	10m maximum (at 10 nF capacitive load)
Approvals	CE, UL file #E321951, RoHS, TUV

To obtain the most current agency approval information, see the Agency Approval Checklist section on the specific part number's web page at www.AutomationDirect.com

LED Status Indicators



Sender

LED	Access protection (YCA)
Mode	Off when maximum operating range 15m
	Blue when maximum operating range 50m
	Red or Purple in case of wiring error
Channel	Blue when channel 1 is selected
	Purple when channel 2 is selected
Alignment	Steady orange when the screen is not fully aligned
	Flashing orange when the first third of the screen is aligned
	Off when screen is fully aligned
Alignment	Steady orange when the lowest beam is not aligned
	Flashing orange when the lowest beam is aligned
	Off when screen is fully aligned

Receiver

LED	Access protection (YCA)
Power	Green when power is ON
Channel	Blue when channel 1 is selected
	Purple when channel 2 is selected
Status	Green when OSSD outputs are ON
Status	Red when OSSD outputs are OFF

Contrinex Safety Light Curtains Accessories

Safety Light Curtains Accessories Overview

Part Number	Price	Description	Use With
<u>YXL-0001-000</u>	\$,00?tu:	Laser alignment tool for safety light curtains, class 2 laser, range up to 50 meters, useable and clippable to YBB and YCA light curtains models, 2 AAA batteries included.	YBB Series YCA Series
<u>YXW-0001-000</u>	\$490:	Safety light curtain mounting brackets for top and bottom mounting. Plastic. 2/pk.	
<u>YXW-0003-000</u>	\$491:	Safety light curtain sliding T-nuts for side mounting. Metal. 2/pk. Ideal torque from M5x0.8 thread is 6 Nm (4.42 lb-ft, 53.1 lb-in.).	



[YXW-0001-000](#)



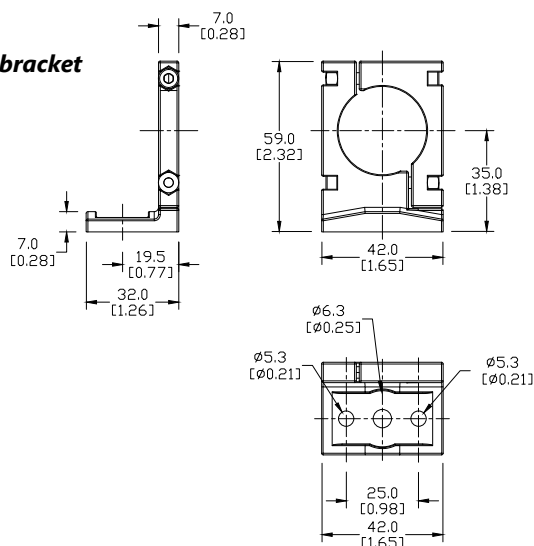
[YXW-0003-000](#)



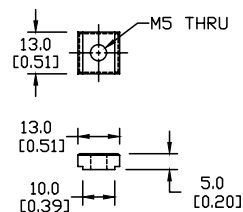
[YXL-0001-000](#)

Dimensions mm [in]

Mounting bracket



T-Nuts for side mounting

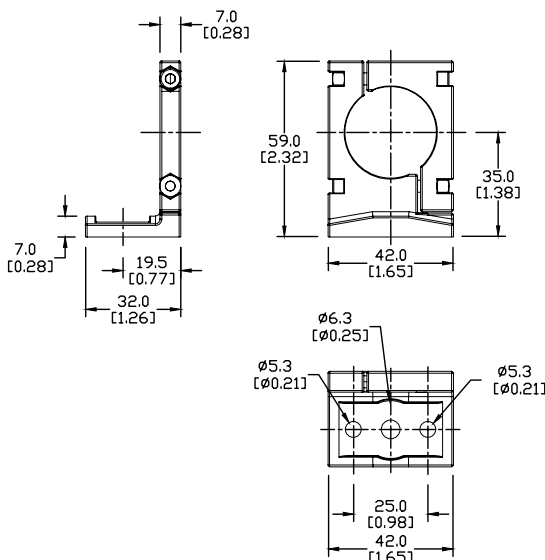


Contrinex Safety Light Curtains Accessories

Mounting bracket



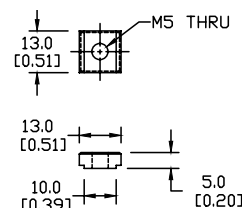
YXW-0001-000



T-Nuts for side mounting



YXW-0003-000



Laser Alignment Tool

- Clips on YBB and YCA Curtains/Barriers
- High quality lens for narrow output beam
- Up to 50m [164ft] range
- <1mW output power
- Standard AA batteries included

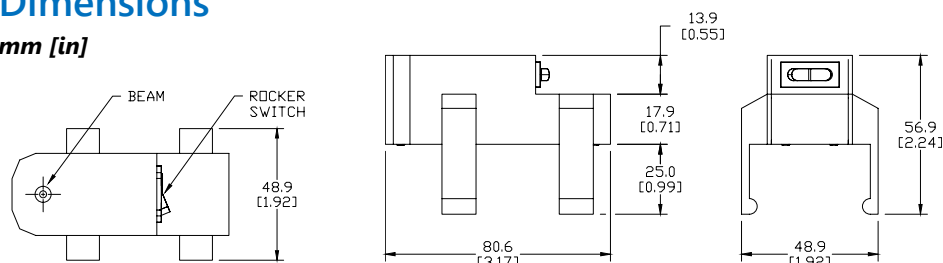


YXL-0001-000

Laser Alignment Tool YXL-0001-000 Specifications	
Supply Voltage Range	2.5 – 3.3 VDC
Laser Module Optical Output Power	<1mW (Class 2)
Range	50m (164ft)
Ambient Temperature Range	0-40°C (32-104°F)
Storage Temperature Range	0-60°C (32-140°F)
Wavelength	655nm ± 1%
Laser Beam Spot Size at 10m	< 10mm
Divergence Angle	1.1 mrad
Housing Material	PA with 30% fiberglass
Mounting	Clippable onto YBB / YCA devices
Weight	95g (0.21 lb)

Dimensions

mm [in]



See our website www.AutomationDirect.com for complete engineering drawings.

Warning: Safety products sold by AutomationDirect are Safety components only.

The purchaser/installer is solely responsible for the application of these components and ensuring all necessary steps have been taken to assure each application and use meets all performance and applicable safety requirements and/or local, national and/or international safety codes as required by the application. AutomationDirect cannot certify that our products used solely or in conjunction with other AutomationDirect or other vendors' products will assure safety for any application.

Any person using or applying any products sold by AutomationDirect is responsible for learning the safety requirements for their individual application and applying them, and therefore assumes all risks, and accepts full and complete responsibility for the selection and suitability of the product for their respective application. AutomationDirect does not provide design or consulting services, and cannot advise whether any specific application or use of our products would ensure compliance with the safety requirements for any application.

