

WKT Series Factor 1 Weld-Field Immune Inductive Proximity Sensors

M30 (30mm)



- Correction Factor (K-Factor) = 1
- Low cost/high performance
- Weld slag resistant coating
- Inductive sensor
- Metal thread M12 x 1 Connector
- Increased sensing range
- Gold-plated contacts
- Electromagnetic field immune
- Flush mounting
- Lifetime warranty

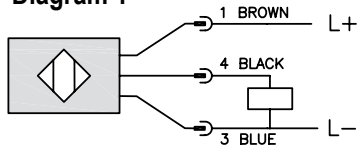


WKT Series M30 Inductive Proximity Selection Chart

| Part Number | Price | Sensing Range | Mounting | Output State | Logic | Voltage | Connection | Wiring | Dimensions |
|------------------|----------|-----------------|----------|--------------|-------|-------------|----------------------------|-----------|------------|
| WKT-AP-3H | \$,2a8,: | 15 mm [0.59 mm] | Flush | N.O. | PNP | 10 - 30 VDC | 4-pin M12 quick-disconnect | Diagram 1 | Figure 1 |

Wiring Diagrams

Diagram 1



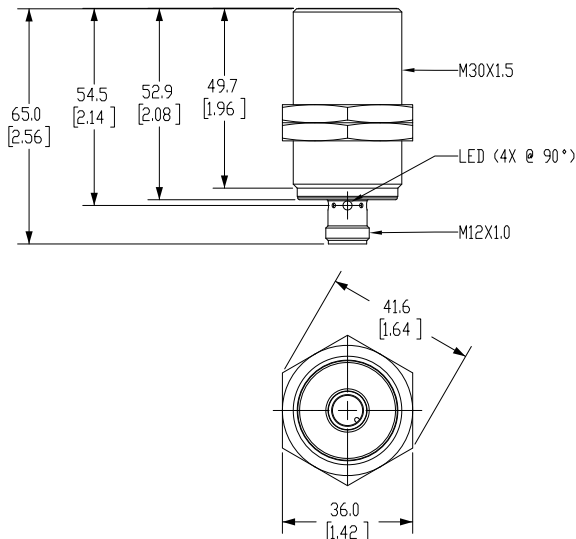
Connector



Dimensions

mm [inches]

Figure 1



WKT Series Factor 1 Weld-Field Immune Inductive Proximity Sensors

| WKT Series M30 Inductive Proximity Specifications | |
|--|--|
| Model | <u>WKT-AP-3H</u> |
| Mounting Type | Flush |
| Nominal Sensing Distance | 15mm [0.59 in] |
| Operating Distance | 0-12.15 mm [0-0.49 in] |
| Material Correction Factors | Correction Factor (K-Factor) = 1 |
| Output Type | N.O. |
| Operating Voltage | 10 to 30 VDC |
| No-load Supply Current | < 20mA |
| Operating (Load) Current | 100mA |
| Off-state Leakage Current | NA |
| Voltage Drop | < 2.5 V |
| Switching Frequency | 2000Hz |
| Differential Travel (% of Nominal Distance) | 3 - 15 |
| Repeat Accuracy | NA |
| Ripple | NA |
| Time Delay Before Availability (tv) | NA |
| Short Circuit Protection | Yes |
| Operating Temperature | -40 to 85 °C [-40 to 185 °F] |
| Protection Degree (DIN 40050) | IP65 / IP66 / IP67 / IP68 / IP69K |
| LED Indicators | Illuminated when energized |
| Housing Material | Brass with anti-spatter ceramic (Polytetrafluoroethylene [PTFE]) coating; LED window: Polyetherimide [PEI] |
| Sensing Face Material | active face: Liquid Crystal Polymer [LCP] black |
| Shock/Vibration | See Proximity Sensor Terminology |
| Weight | 0.112 kg [0.247 lb] |
| Connection | 4-pin M12 quick-disconnect |
| Agency Approvals | cULus E328811, CE |

To obtain the most current agency approval information, see the Agency Approval Checklist section on the specific part number's web page.