

# KST Series Factor 1 Inductive Proximity Sensors



## M30 (30mm)

- Correction Factor (K-Factor) = 1
- Low cost/high performance
- Inductive sensor
- Metal thread M12 x 1 Connector
- Increased sensing range
- Gold-plated contacts
- Electromagnetic field immune
- Flush and Non-flush mounting
- Lifetime warranty

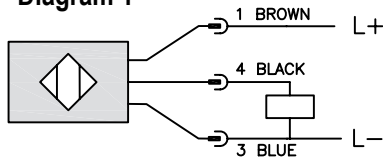


**KST Series M30 Inductive Proximity Selection Chart**

Part Number	Price	Sensing Range	Mounting	Output State	Logic	Voltage	Connection	Wiring	Dimensions
<b>KST6-AP-3H</b>	\$2a8x:	15mm [0.59 in]	Flush	N.O.	PNP	10 - 30 VDC	4-pin M12 quick-disconnect	Diagram 1	Figure 1
<b>KST-AP-3H</b>	\$2a8y:	15mm [0.59 in]	Flush						Figure 2
<b>KST-AP-4H</b>	\$2a8z:	30mm [1.18 in]	Non-flush						

## Wiring Diagrams

**Diagram 1**



**Connector**

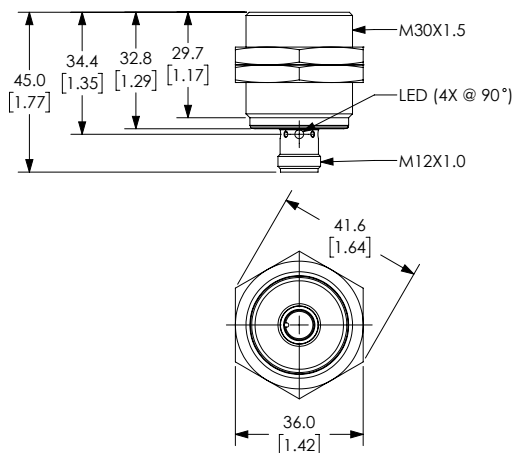
**4-pin M12 connector**



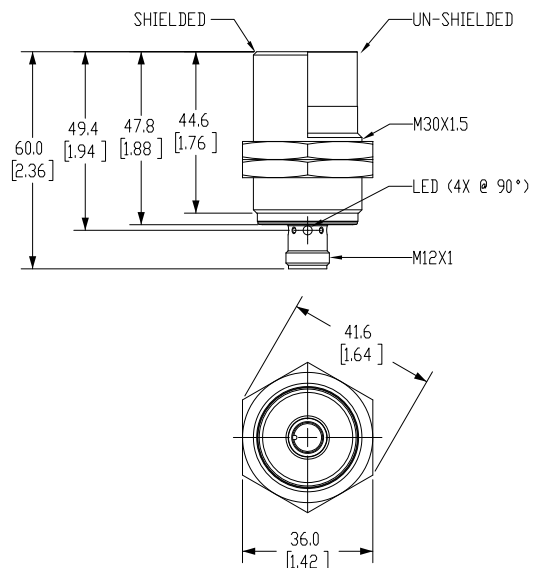
## Dimensions

mm [inches]

**Figure 1**



**Figure 2**



# KST Series Factor 1 Inductive Proximity Sensors

KST Series M30 Inductive Proximity Specifications			
Models	KST6-AP-3H	KST-AP-3H	KST-AP-4H
Mounting Type	Flush		Non-flush
Nominal Sensing Distance	15mm [0.59 in]		30mm [1.18 in]
Operating Distance	0 - 12.15 mm		0 - 24.30 mm
Material Correction Factors	Correction Factor (K-Factor) = 1		
Output Type	N.O.		
Operating Voltage	10 to 30 VDC		
No-load Supply Current	< 20mA		
Operating (Load) Current	100mA		
Off-state Leakage Current	NA		
Voltage Drop	< 2.5 V		
Switching Frequency	2000Hz		
Differential Travel (% of Nominal Distance)	3 - 15		
Repeat Accuracy	NA		
Ripple	NA		
Time Delay Before Availability (tv)	NA		
Short Circuit Protection	Yes		
Operating Temperature	-40 to 85°C [-40 to 185°F]		
Protection Degree (DIN 40050)	IP65 / IP66 / IP67 / IP68 / IP69K		
LED Indicators	Illuminated when energized		
Housing Material	stainless steel [316L]; LED window: Polyetherimide [PEI]		
Sensing Face Material	active face: Liquid Crystal Polymer [LCP] white		
Shock/Vibration	See <a href="#">Proximity Sensor Terminology</a>		
Weight	0.077 kg	0.093 kg	0.08 kg
Connection	4-pin M12 quick-disconnect		
Agency Approvals	cULus E328811, CE		

To obtain the most current agency approval information, see the Agency Approval Checklist section on the specific part number's web page.