



# Pneumatic Selector Switches, 22mm Lever

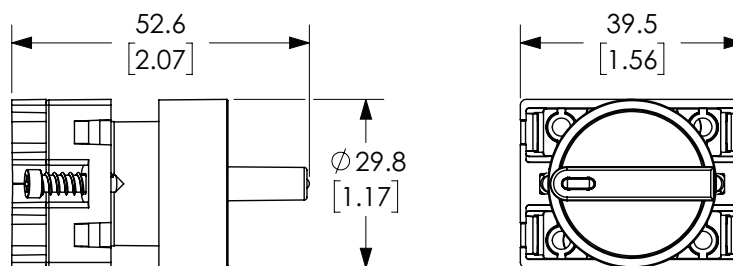
## Knob selector switches

**ECP3300**

Part Number	Color	Description	Weight (lbs)	Price
<a href="#"><u>ECP3300</u></a>	Black	NITRA pneumatic selector switch, IP65, 22mm, 2-position, maintained, plastic base, plastic bezel, operator only, Operator: black, knob, 30mm, round, plastic.	0.09	\$2dsq:
<a href="#"><u>ECP3310</u></a>	Black	NITRA pneumatic selector switch, IP65, 22mm, 2-position, spring return from right, plastic base, plastic bezel, operator only, Operator: black, knob, 30mm, round, plastic.	0.09	\$2dss:
<a href="#"><u>ECP3320</u></a>	Black	NITRA pneumatic selector switch, IP65, 22mm, 3-position, maintained, plastic base, plastic bezel, operator only, Operator: black, knob, 30mm, round, plastic.	0.09	\$;2dst:
<a href="#"><u>ECP3330</u></a>	Black	NITRA pneumatic selector switch, IP65, 22mm, 3-position, spring return to center from right or left, plastic base, plastic bezel, operator only, Operator: black, knob, 30mm, round, plastic.	0.09	\$2dsu:

**ECP3320**

### Dimensions mm [inches]



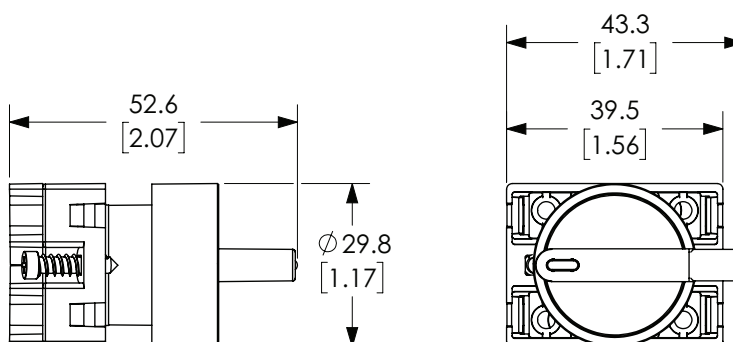
## Long lever selector switches

**ECP3350**

Part Number	Color	Description	Weight (lbs)	Price
<a href="#"><u>ECP3350</u></a>	Black	NITRA pneumatic selector switch, IP65, 22mm, 2-position, maintained, plastic base, plastic bezel, operator only, Operator: black, lever, 30mm, round, plastic.	0.09	\$2dsv:
<a href="#"><u>ECP3360</u></a>	Black	NITRA pneumatic selector switch, IP65, 22mm, 2-position, spring return from right, plastic base, plastic bezel, operator only, Operator: black, lever, 30mm, round, plastic.	0.09	\$2dsx:
<a href="#"><u>ECP3370</u></a>	Black	NITRA pneumatic selector switch, IP65, 22mm, 3-position, maintained, plastic base, plastic bezel, operator only, Operator: black, lever, 30mm, round, plastic.	0.09	\$2dsy:
<a href="#"><u>ECP3380</u></a>	Black	NITRA pneumatic selector switch, IP65, 22mm, 3-position, spring return to center from right or left, plastic base, plastic bezel, operator only, Operator: black, lever, 30mm, round, plastic.	0.09	\$2dsz:

**ECP3370**

### Dimensions mm [inches]



See our website [www.AutomationDirect.com](http://www.AutomationDirect.com) for complete Engineering drawings.



# Pneumatic Key Selector Switches, 22mm

## Key selector switches



**ECP3420**

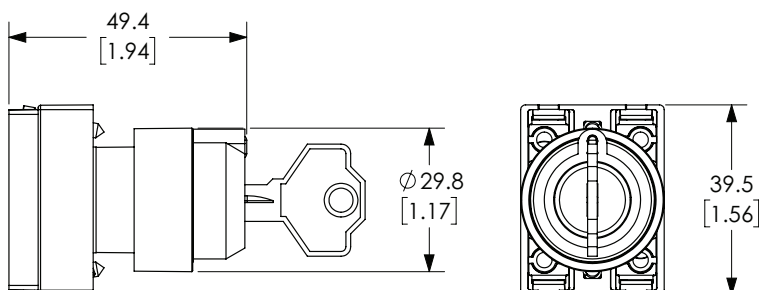
Part Number	Color	Description	Weight (lbs)	Price
<b>ECP3420</b>	Black	NITRA pneumatic selector switch, IP65, 22mm, 2-position, maintained, key removable in all positions, plastic base, plastic bezel, operator only, Operator: black, key, 30mm, round, plastic.	0.17	\$2ds_:
<b>ECP3430</b>	Black	NITRA pneumatic selector switch, IP65, 22mm, 2-position, spring return from right, key removable left position, plastic base, plastic bezel, operator only, Operator: black, key, 30mm, round, plastic.	0.17	\$2ds#:
<b>ECP3470</b>	Black	NITRA pneumatic selector switch, IP65, 22mm, 3-position, maintained, key removable in all positions, plastic base, plastic bezel, operator only, Operator: black, key, 30mm, round, plastic.	0.17	\$,2ds!:



*Note: Keyed switches come with two keys. All plastic 22mm keyed switches are keyed the same. Replacement keys are available. Order part no. ECX1067-2 (pkg. of 2). Keys for plastic 22mm keyed switches are not compatible with Cutler-Hammer key switches.*

## Dimensions

mm [inches]



**ECP3470**

## Pneumatic switch accessory - support base with adapters

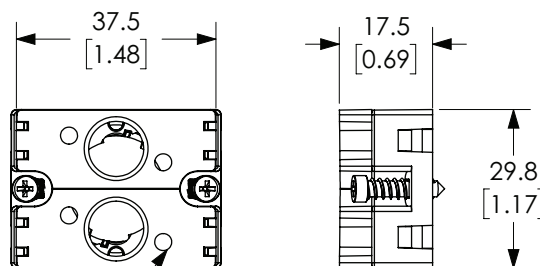


**ECP3029-02**

Part Number	Description	Weight (lbs)	Price
<b>ECP3029-02</b>	NITRA valve adapter block, replacement, plastic. For use with ECP series pneumatic pushbuttons.	0.03	\$2ds1:

## Dimensions

mm [inches]



M3 THRU HOLE  
SCREWS INCLUDED

*Note: base sold as three piece kit.*

See our website [www.AutomationDirect.com](http://www.AutomationDirect.com) for complete Engineering drawings.



# Pneumatic Pushbuttons, 22mm

NITRA® pneumatic pushbuttons are all plastic and come with adapters to allow mounting of up to two 3-way valves, or one valve and one to three contact blocks. They fit in a standard 22.5mm hole, just like electrical pushbuttons.

## Features

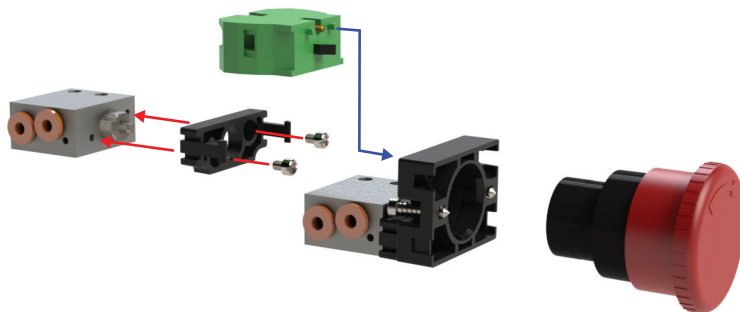
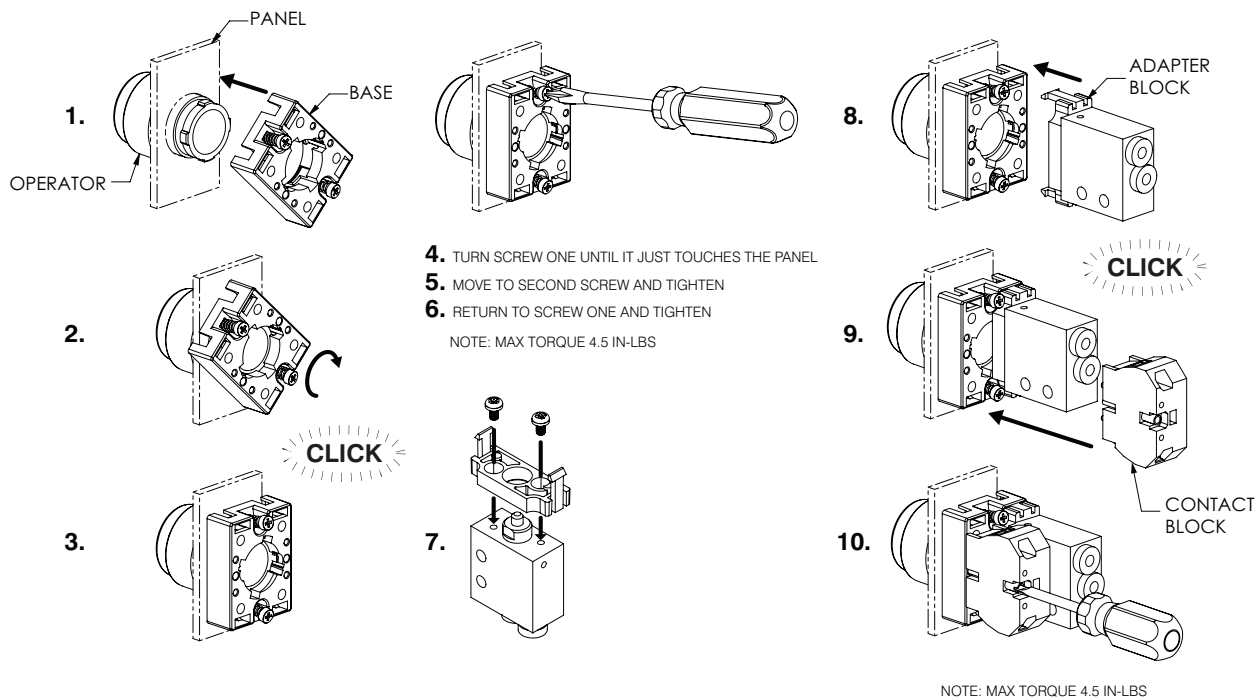
- Plastic bezel and button
- Valve adapters and mounting screws included
- Valves sold separately
- Bases will work with GCX plastic operators and **only** the three ECX Series contact blocks shown below



## Pushbutton Specifications

<b>Operating Temperature</b>	-13 to 158°F (-25 to +70°C)
<b>Storage Temperature</b>	-40 to 176°F (-40 to +80°C)
<b>Mechanical Life</b>	1,000,000 cycles
<b>Switching Cycles</b>	3600 cycles/hr
<b>Mounting (Valve)</b>	(4) M3x5 valve mounting screws included
<b>Protection</b>	IP65 after installation
<b>Approvals</b>	CE

## Adapter Block Installation



**ECX1040-2**



**ECX1042-2**



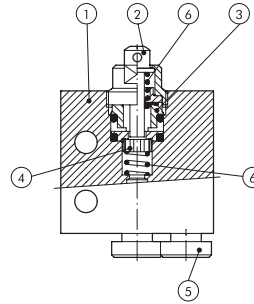
**ECX1030-2**



# Pneumatic Manual Valves

## Pneumatic Manual Valve Materials

1. Aluminum valve body
2. Chemically nickel-plated brass button
3. Brass distance plates
4. NBR gaskets
5. Stainless steel, brass and plastic push-to-connect cartridges
6. Stainless steel springs



## Pneumatic Metal Plunger Valves

*These pneumatic valves are used with Nitra pneumatic pushbuttons and switches*

## Features

- Available in normally open or normally closed
- 5/32" [4mm] push-to-connect ports located on side or end

### Valve Symbols

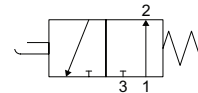


Diagram "A"

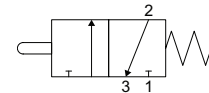


Diagram "B"



**EVP-CA-PL**

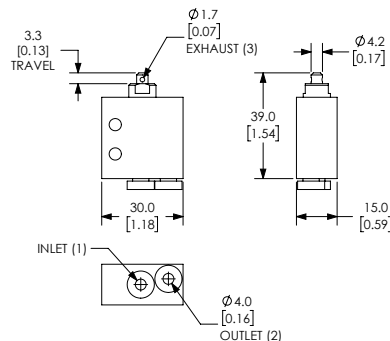


**EVP-CS-PL**

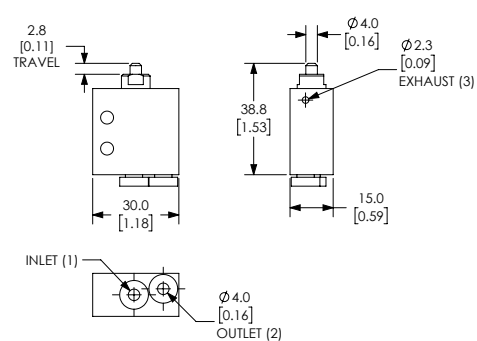
Specifications				
Models	EVP-CA-PL	EVP-AA-PL	EVP-CS-PL	EVP-AS-PL
Price	\$;2ds[:	\$;2ds[:	\$;2dt2:	\$;2dt3:
Weight (lbs)	0.1	0.1	0.1	0.1
Valve Type	2-port (3-way) 2-position			
Acting	Metal plunger, normally closed, spring return	Metal plunger, normally open, spring return	Metal plunger, normally closed, spring return	Metal plunger, normally open, spring return
Diagram	B	A	B	A
Port Size	Axial ports 5/32in (4mm)		Side ports 5/32in (4mm)	
Flow (Cv)	0.13	0.13	0.13	0.13
Fluid	Air (to be filtered by 40μ filter element)			
Min. / Max. Pressure	7.25 to 145 psi (0.5 to 10 bar)			
Temperature	14°F to 140°F (-10°C to 60°C)			
Lubrication	Not Required			
Body	Aluminum			
Protection	IP65			

## Dimensions

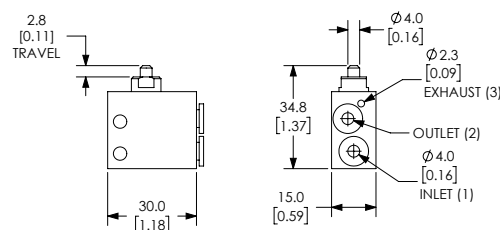
mm [inches]



**EVP-CA-PL**



**EVP-AA-PL**



**EVP-CS-PL / EVP-AS-PL**

See our website [www.AutomationDirect.com](http://www.AutomationDirect.com) for complete Engineering drawings.