

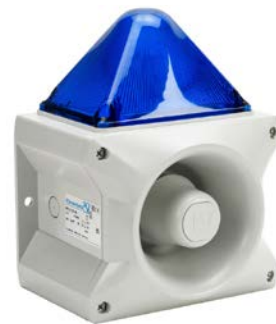
## PATROL Xenon Audible-Visual Signal Beacons 214 x 156 x 270mm PA X 10-10 Series

### Overview

Pfannenberg Xenon Audible-Visual Signal Beacons PATROL PA X 10-10 series produces acoustic signals in 80 different tones, which can be selected using an internal switch. The external control can be used to switch over to a maximum of 3 additional tones.

### Features

- High efficiency and good penetration of acoustical obstacles significantly reduce the required number of sounders
- Pre-wired sounder and light
- Corresponding light intensity available for every sound pressure level
- Surface-mount design for quick and easy installation
- High intensity Xenon tube
- 10-year warranty


**23361157055**


PATROL Xenon Audible-Visual Signal Beacons 214 x 156 x 270mm PA X 10-10 Series												
Part Number	Price	Operator Color	Light Color	Voltage Operating Range	Nominal Current Consumption <sup>1</sup>	Tone Type	Tone Frequency	Loudness Decibels	Bulb Type	Light Function	Weight	Drawing Link
<a href="#">23361154055</a>	\$0634g:	Amber	Amber	115VAC 50/60 Hz	300–450mA	(80) selectable	150Hz 2.9 kHz	117dB at 1m	Xenon tube	Flashing Strobe (1Hz flash frequency)	2133g [4.70 lb]	<a href="#">PDF</a>
<a href="#">23361155055</a>	\$0634h:	Red	Red									<a href="#">PDF</a>
<a href="#">23361156055</a>	\$-0634i:	Green	Green									<a href="#">PDF</a>
<a href="#">23361157055</a>	\$-0634j:	Blue	Blue									<a href="#">PDF</a>
<a href="#">23361804055</a>	\$0634k:	Amber	Amber	24VDC	680–1040mA	(80) selectable	150Hz 2.9 kHz	117dB at 1m	Xenon tube	Flashing Strobe (1Hz flash frequency)	2056g [4.53 lb]	<a href="#">PDF</a>
<a href="#">23361805055</a>	\$-0634l:	Red	Red									<a href="#">PDF</a>
<a href="#">23361806055</a>	\$0634n:	Green	Green									<a href="#">PDF</a>
<a href="#">23361807055</a>	\$0634o:	Blue	Blue									<a href="#">PDF</a>

<sup>1</sup>Power consumption dependent on operating voltage.

PATROL Xenon Audible-Visual Signal Beacons 214 x 156 x 270mm PA X 10-10 Series Specifications	
Sound Level Reduction	Maximum –12 dB via potentiometer
Alarm Tones	80 / Up to 4 tones are externally selectable
Flash Energy	10J
Flash Rate	1Hz (60 flashes/min)
Light Intensity (DIN 5037 with clear lens)	129cd
Operating Temperature	-40 to 55°C [ -40 to 131°F]
Storage Temperature	-40 to 70°C [ -40 to 158°F]
Relative Humidity	90%
Degree Of Protection	IP66, NEMA 4/4X
Protection Class	II (double insulated equipment)
Service Life Of The Light Source	Light emission still 70% after 8,000,000 flashes
Housing Material	Polycarbonate (PC)/ Acrylonitrile Butadiene Styrene (ABS) Blend
Lens Material	Polycarbonate (PC)
Cable Entry	4 x M20 knockouts prepared (on side), 1 knockout on back
Integrated Seal With Cable Entry	6–13 mm (feed-through grommet)
Connecting Terminals	2.5 mm <sup>2</sup> fine wire with cable end sleeve, 16AWG
Agency Approval	CE, cULus File S7256