



SLV Series Pneumatic Lockout Valves

Accessories

Features

- Silencers (mufflers) are aluminum construction
- High flow rates needed for safety lockout valves
- Pressure indicator pops out when pressure of 5psi or more is present



HVM-34N



SLV-PU

Note: HVM series exhaust silencers have a maximum pressure of 250PSI (17 bar).

NITRA SLV Series Pneumatic Lockout Valve Accessories			
Part No.	Description	Price	Weight (lbs)
<u>HVM-18N</u>	NITRA pneumatic exhaust silencer, aluminum, cylindrical, Cv=2, 1/8in male NPT	\$1nqa:	0.1
<u>HVM-14N</u>	NITRA pneumatic exhaust silencer, aluminum, cylindrical, Cv=2.7, 1/4in male NPT	\$1nqb:	0.1
<u>HVM-38N</u>	NITRA pneumatic exhaust silencer, aluminum, cylindrical, Cv=3.2, 3/8in male NPT	\$1nqc:	0.1
<u>HVM-38N-H</u>	NITRA pneumatic exhaust silencer, aluminum, cylindrical, Cv=4.9, 3/8in male NPT	\$1nqd:	0.2
<u>HVM-12N</u>	NITRA pneumatic exhaust silencer, aluminum, cylindrical, Cv=5.9, 1/2in male NPT	\$1nqe:	0.2
<u>HVM-34N</u>	NITRA pneumatic exhaust silencer, aluminum, cylindrical, Cv=5.9, 3/4in male NPT	\$1nqf:	0.2
<u>HVM-34N-H</u>	NITRA pneumatic exhaust silencer, aluminum, cylindrical, Cv=13.5, 3/4in male NPT	\$1nqg:	0.6
<u>HVM-1N</u>	NITRA pneumatic exhaust silencer, aluminum, cylindrical, Cv=16.7, 1in male NPT	\$1nqh:	0.6
<u>HVM-114N</u>	NITRA pneumatic exhaust silencer, aluminum, cylindrical, Cv=17.4, 1-1/4in male NPT	\$1nqi:	0.6
<u>SLV-PU</u>	NITRA pneumatic pop up pressure indicator, 5 psi, 1/8in male NPT	\$1nqj:	0.1



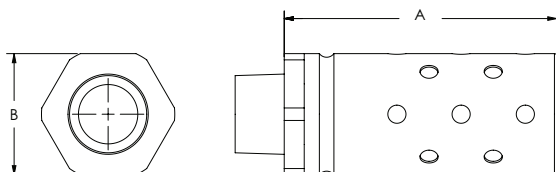
SLV Series Pneumatic Lockout Valves

Accessories

Nitra High Volume Silencers (Mufflers)

Dimensions

inches [mm]

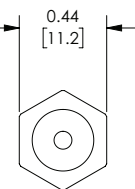
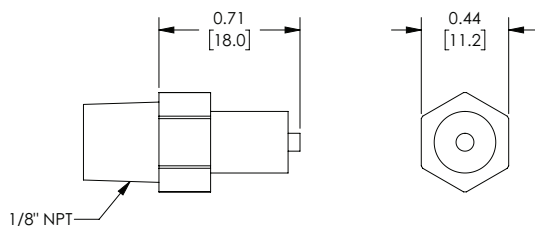


Muffler Dimensions		
Part #	A	B
HVM-18N	1.6 [40.64]	0.8 [20.32]
HVM-14N	1.6 [40.64]	0.8 [20.32]
HVM-38N	1.6 [40.64]	0.8 [20.32]
HVM-38N-H	2.9 [73.66]	1.3 [33.02]
HVM-12N	2.9 [73.66]	1.3 [33.02]
HVM-34N	2.9 [73.66]	1.3 [33.02]
HVM-34N-H	4.5 [114.30]	2.0 [50.80]
HVM-1N	4.5 [114.30]	2.0 [50.80]
HVM-114N	4.5 [114.30]	2.0 [50.80]

Nitra Pop Up Pressure Indicator

Dimensions

inches [mm]



See our website www.AutomationDirect.com for complete Engineering drawings.