



# Polypropylene Manifolds



## NITRA polypropylene manifolds

- 2 to 10 stations
- Variety of port sizes
- Polypropylene (PP)
- Maximum input pressure 150psi
- Made in the USA

Part No. [MRP-2CB](#)Part No. [MRP-2DC](#)

## NITRA Polypropylene Manifolds

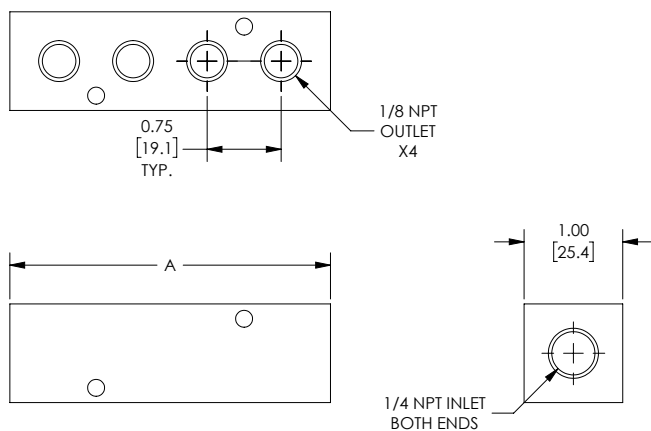
| Part No.                        | Description   | A            | Parts Per Pkg | Weight (lbs) | Price     |
|---------------------------------|---|--------------|---------------|--------------|-----------|
| <a href="#"><u>MRP-2CB</u></a>  | NITRA air or water pneumatic manifold, polypropylene (PP), rectangular, 150 psi maximum operating pressure, 2 stations, (2) 1/4in female NPT inlet(s), (2) 1/8in female NPT outlet(s), standard hole spacing.   | 1.75 [44.5]  | 1             | 0.07         | \$;3,7y:  |
| <a href="#"><u>MRP-3CB</u></a>  | NITRA air or water pneumatic manifold, polypropylene (PP), rectangular, 150 psi maximum operating pressure, 3 stations, (2) 1/4in female NPT inlet(s), (3) 1/8in female NPT outlet(s), standard hole spacing.   | 2.50 [63.5]  | 1             | 0.11         | \$;3,7z:  |
| <a href="#"><u>MRP-4CB</u></a>  | NITRA air or water pneumatic manifold, polypropylene (PP), rectangular, 150 psi maximum operating pressure, 4 stations, (2) 1/4in female NPT inlet(s), (4) 1/8in female NPT outlet(s), standard hole spacing.   | 3.25 [82.6]  | 1             | 0.13         | \$;3,7]:  |
| <a href="#"><u>MRP-5CB</u></a>  | NITRA air or water pneumatic manifold, polypropylene (PP), rectangular, 150 psi maximum operating pressure, 5 stations, (2) 1/4in female NPT inlet(s), (5) 1/8in female NPT outlet(s), standard hole spacing.   | 4.00 [101.6] | 1             | 0.16         | \$;3,7[:  |
| <a href="#"><u>MRP-6CB</u></a>  | NITRA air or water pneumatic manifold, polypropylene (PP), rectangular, 150 psi maximum operating pressure, 6 stations, (2) 1/4in female NPT inlet(s), (6) 1/8in female NPT outlet(s), standard hole spacing.   | 4.75 [120.7] | 1             | 0.19         | \$;3,7_:  |
| <a href="#"><u>MRP-7CB</u></a>  | NITRA air or water pneumatic manifold, polypropylene (PP), rectangular, 150 psi maximum operating pressure, 7 stations, (2) 1/4in female NPT inlet(s), (7) 1/8in female NPT outlet(s), standard hole spacing.   | 5.50 [139.7] | 1             | 0.24         | \$;3,7#:  |
| <a href="#"><u>MRP-8CB</u></a>  | NITRA air or water pneumatic manifold, polypropylene (PP), rectangular, 150 psi maximum operating pressure, 8 stations, (2) 1/4in female NPT inlet(s), (8) 1/8in female NPT outlet(s), standard hole spacing.   | 6.25 [158.8] | 1             | 0.25         | \$;3,7!:  |
| <a href="#"><u>MRP-9CB</u></a>  | NITRA air or water pneumatic manifold, polypropylene (PP), rectangular, 150 psi maximum operating pressure, 9 stations, (2) 1/4in female NPT inlet(s), (9) 1/8in female NPT outlet(s), standard hole spacing.   | 7.00 [177.8] | 1             | 0.30         | \$;3,7?:  |
| <a href="#"><u>MRP-10CB</u></a> | NITRA air or water pneumatic manifold, polypropylene (PP), rectangular, 150 psi maximum operating pressure, 10 stations, (2) 1/4in female NPT inlet(s), (10) 1/8in female NPT outlet(s), standard hole spacing. | 7.75 [196.9] | 1             | 0.32         | \$;3,7,:: |
| <a href="#"><u>MRP-2DC</u></a>  | NITRA air or water pneumatic manifold, polypropylene (PP), rectangular, 150 psi maximum operating pressure, 2 stations, (2) 3/8in female NPT inlet(s), (2) 1/4in female NPT outlet(s), standard hole spacing.   | 2.13 [54.0]  | 1             | 0.13         | \$;3,80:  |
| <a href="#"><u>MRP-3DC</u></a>  | NITRA air or water pneumatic manifold, polypropylene (PP), rectangular, 150 psi maximum operating pressure, 3 stations, (2) 3/8in female NPT inlet(s), (3) 1/4in female NPT outlet(s), standard hole spacing.   | 3.00 [76.2]  | 1             | 0.18         | \$;3,81:  |
| <a href="#"><u>MRP-4DC</u></a>  | NITRA air or water pneumatic manifold, polypropylene (PP), rectangular, 150 psi maximum operating pressure, 4 stations, (2) 3/8in female NPT inlet(s), (4) 1/4in female NPT outlet(s), standard hole spacing.   | 3.88 [98.4]  | 1             | 0.23         | \$;3,82:  |
| <a href="#"><u>MRP-5DC</u></a>  | NITRA air or water pneumatic manifold, polypropylene (PP), rectangular, 150 psi maximum operating pressure, 5 stations, (2) 3/8in female NPT inlet(s), (5) 1/4in female NPT outlet(s), standard hole spacing.   | 4.75 [120.7] | 1             | 0.30         | \$;3,83:  |
| <a href="#"><u>MRP-6DC</u></a>  | NITRA air or water pneumatic manifold, polypropylene (PP), rectangular, 150 psi maximum operating pressure, 6 stations, (2) 3/8in female NPT inlet(s), (6) 1/4in female NPT outlet(s), standard hole spacing.   | 5.63 [142.9] | 1             | 0.34         | \$;3,84:  |
| <a href="#"><u>MRP-7DC</u></a>  | NITRA air or water pneumatic manifold, polypropylene (PP), rectangular, 150 psi maximum operating pressure, 7 stations, (2) 3/8in female NPT inlet(s), (7) 1/4in female NPT outlet(s), standard hole spacing.   | 6.50 [165.1] | 1             | 0.41         | \$;3,85:  |
| <a href="#"><u>MRP-8DC</u></a>  | NITRA air or water pneumatic manifold, polypropylene (PP), rectangular, 150 psi maximum operating pressure, 8 stations, (2) 3/8in female NPT inlet(s), (9) 1/4in female NPT outlet(s), standard hole spacing.   | 7.38 [187.3] | 1             | 0.45         | \$;3,86:  |
| <a href="#"><u>MRP-9DC</u></a>  | NITRA air or water pneumatic manifold, polypropylene (PP), rectangular, 150 psi maximum operating pressure, 9 stations, (2) 3/8in female NPT inlet(s), (9) 1/4in female NPT outlet(s), standard hole spacing.   | 8.25 [209.6] | 1             | 0.54         | \$;3,87:  |
| <a href="#"><u>MRP-10DC</u></a> | NITRA air or water pneumatic manifold, polypropylene (PP), rectangular, 150 psi maximum operating pressure, 10 stations, (2) 3/8in female NPT inlet(s), (10) 1/4in female NPT outlet(s), standard hole spacing. | 9.13 [231.8] | 1             | 0.59         | \$;3,88:  |



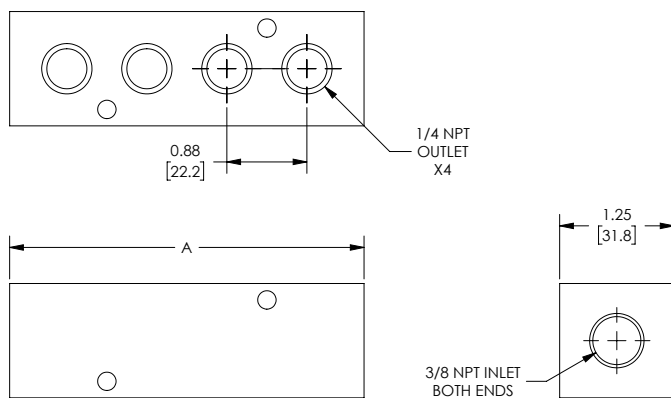
# Polypropylene Manifolds

## Dimensions

inches [mm]



**Part No. MRP-xCB**



**Part No. MRP-xDC**

See our website [www.AutomationDirect.com](http://www.AutomationDirect.com) for complete Engineering drawings.