



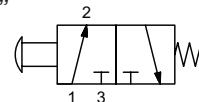
Pneumatic Manual Valves

Manual Valves, Normally Closed, Spring Return, Pushbutton

NITRA GVP manual valves offer a simple, convenient method for directional control and other pneumatic valve applications. All valves can be through panel mounted for a very clean looking operator interface. Valves with male NPT inlets can be threaded into MR series air manifolds to simplify supply connections.

- Swivel output port
- High flow
- Poppet design contributes to product life
- Made in USA

Diagram "A"



3-port, 2-position

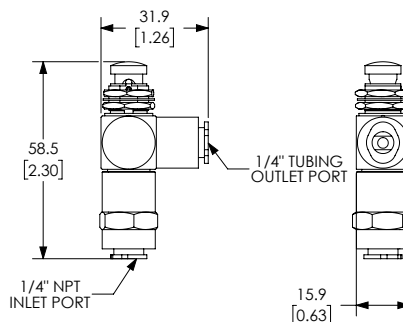
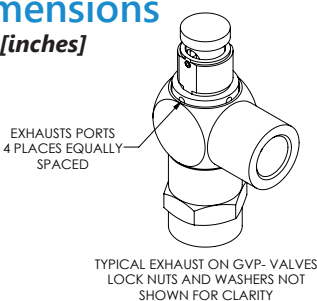
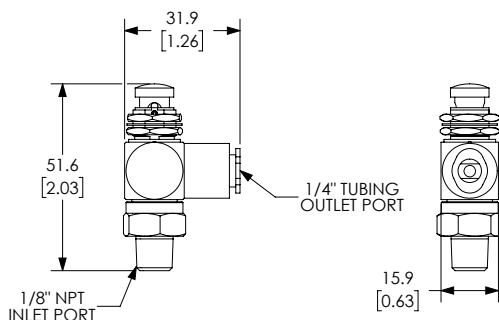
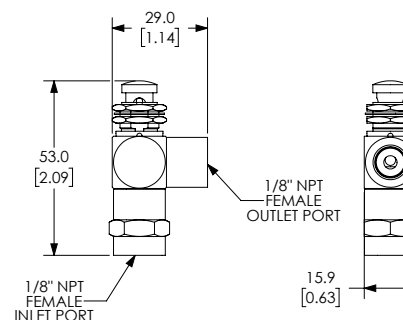
Part No. GVP-3C2P-PBPart No. GVP-3C1M2P-PBPart No. GVP-3C1F-PB

Specifications			
Models	<u>GVP-3C2P-PB</u>	<u>GVP-3C1M2P-PB</u>	<u>GVP-3C1F-PB</u>
Price	\$3.89:	\$3.8a:	\$3.8b:
Weight (lbs)	0.1	0.1	0.1
Valve Type	3-port (3-way) 2-position		
Acting	Pushbutton, normally closed, spring return, through panel mount		
Diagram	A	A	A
Port Size	90-degree ports, 1/4in tube inlet(s), 1/4in tube outlet(s), (1) vent hole exhaust(s)	90-degree ports, 1/8in male NPT inlet(s), 1/4in tube outlet(s), (1) vent hole exhaust(s)	90-degree ports, 1/8in female NPT inlet(s), 1/8in FNPT outlet(s), (1) vent hole exhaust(s)
Flow (Cv)	0.29	0.29	0.29
Fluid	Air (to be filtered by 40μ filter element)		
Min. / Max. Pressure	0 to 125 psi (0 to 8.62 bar)		
Temperature	-20°F to 160°F (-51°C to 71°C)		
Lubrication	Not Required		
Body	Aluminum/ Anodize, Brass/ Electroless Nickel, Stainless Steel, Nylon, Acetal Copolymer, Buna-N		
Protection	IP65		

Dimensions

mm [inches]

Note: For panel mounting
 • Maximum thickness 0.25"
 • Diameter Ø 0.484 thru




Part No. GVP-3C2P-PBPart No. GVP-3C1M2P-PBPart No. GVP-3C1F-PB

See our website www.AutomationDirect.com for complete Engineering drawings.



GVP and GVS Series Pneumatic Valve Accessories



Nitra Pneumatic GVP and GVS Series Pneumatic Valve Accessories				
Item	Part No.	Description	Price	Weight (lbs)
	<u>GV-BKT</u>	NITRA 90 degree mounting bracket, plated steel. For use with all GVP and GVS valves.	\$,3,ad:	0.5
	<u>GV-CAM</u>	NITRA roller cam actuator, plated steel, for use with all GVP and GVS valves. The roller is manufactured from durable acetal plastic. All cams feature a unique acetal pad which minimizes side load and virtually eliminates wear.	\$,3,ae:	0.5
	<u>GV-TMB</u>	NITRA thumb actuator, plated steel, for use with all GVP and GVS valves.	\$,3,af:	0.5

Assembly Example



See our website www.AutomationDirect.com for complete Engineering drawings.