



Pneumatic Manifolds

NITRA aluminum manifolds are available in two variations. Round manifolds have one 1/4" NPT input and either two or three 1/4" NPT outputs. Rectangular manifolds have 1/2" NPT inputs on either end and either three or five 1/4" NPT outputs.

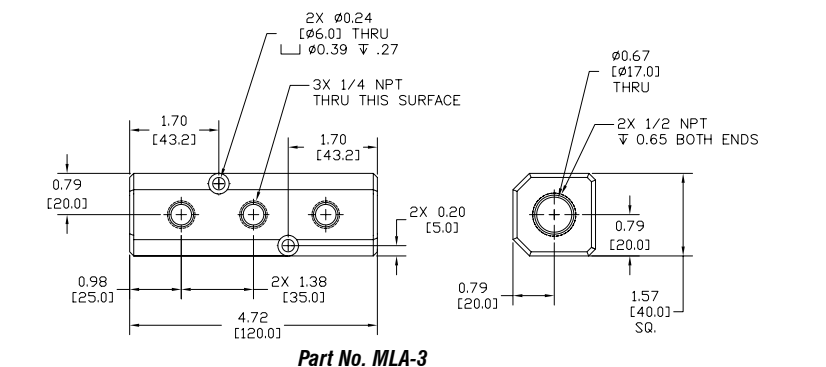
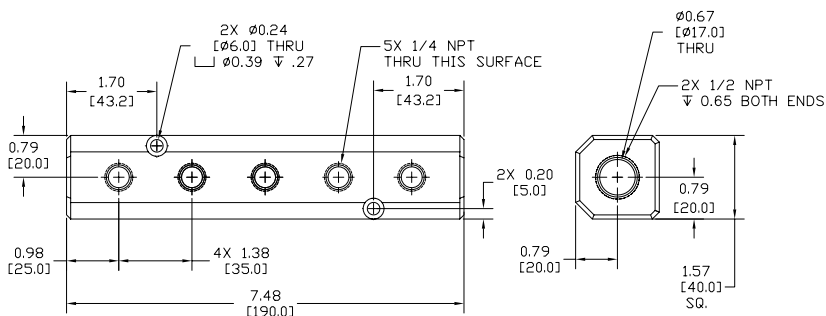
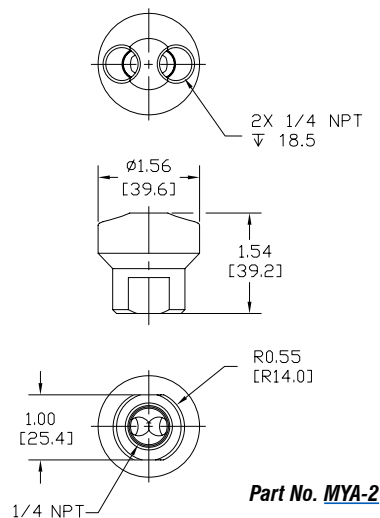
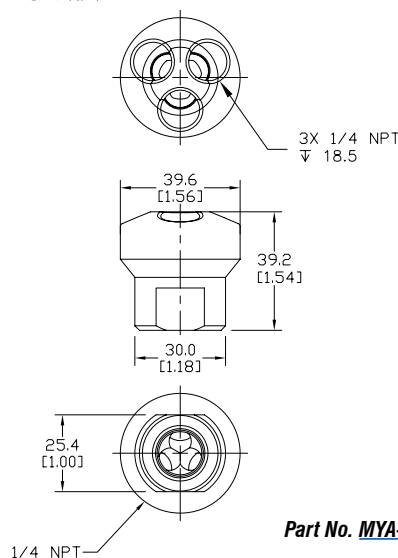
- Maximum input pressure of 500 psi

**MYA-3****MLA-5**

NITRA Pneumatic Manifolds				
Part No.	Price	Description	Parts Per Pkg	Weight
MYA-2	\$e9x:	Pneumatic aluminum manifold, round, 1/4 inch female NPT inlet, two 1/4 inch female NPT outlets	1	0.2
MYA-3	\$e9y:	Pneumatic aluminum manifold, round, 1/4 inch female NPT inlet, three 1/4 inch female NPT outlets	1	0.2
MLA-3	\$0e9u:	Pneumatic aluminum manifold, rectangular, 1/2 inch female NPT inlet, three 1/4 inch female NPT outlets	1	0.9
MLA-5	\$0e9v:	Pneumatic aluminum manifold, rectangular, 1/2 inch female NPT inlet, five 1/4 inch female NPT outlets	1	1.4

Dimensions

inches [mm]

**Part No. MLA-3****Part No. MLA-5****Part No. MYA-2****Part No. MYA-3**