

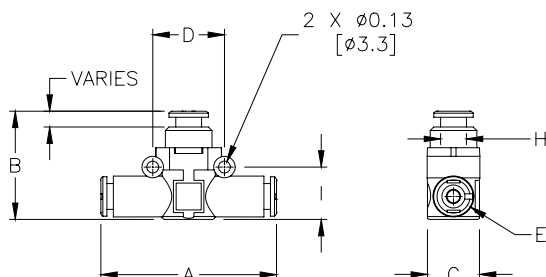


# Inline Pressure Indicators and Quick Exhaust Valves

**NITRA** pneumatic push-to-connect inline pressure indicators have a technopolymer body and nickel-plated brass internal parts, with a range of 29 to 145 psi. When pressure is off, the indicator is clear. When pressure is on, a colored indicator appears.

## Features

- Works with flexible pneumatic tubing
- Easily added to existing circuits
- Green or orange indicator buttons
- Two-year warranty



## NITRA Inline Pressure Indicators

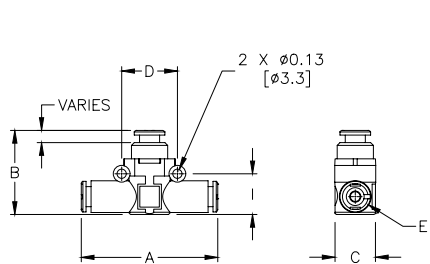
*Inch Sizes - dimensions in inches (in.)*

| Part No.       | Price   | Tube Size                       | Indicator Color | Ø    | A    | B    | C    | D    | H     | I    | Operating Pressure Range (psi) | Package Weight (lbs) |
|----------------|---------|---------------------------------|-----------------|------|------|------|------|------|-------|------|--------------------------------|----------------------|
| <b>PMU14A</b>  | \$07e5: | 1/4 in. x 1/4 in.               | Orange          | 1/4  | 1.85 | 1.46 | 0.58 | 0.79 | M15x1 | 0.57 | 29-145                         | 0.1                  |
| <b>PMU14G</b>  | \$07e6: | 1/4 in. x 1/4 in.               | Green           | 1/4  | 1.85 | 1.46 | 0.58 | 0.79 | M15x1 | 0.57 | 29-145                         | 0.1                  |
| <b>PMU516A</b> | \$07e7: | 5/16 in. [8mm] x 5/16 in. [8mm] | Orange          | 5/16 | 2.18 | 1.61 | 0.74 | 0.94 | M15x1 | 0.74 | 29-145                         | 0.1                  |
| <b>PMU516G</b> | \$07e8: | 5/16 in. [8mm] x 5/16 in. [8mm] | Green           | 5/16 | 2.18 | 1.61 | 0.74 | 0.94 | M15x1 | 0.74 | 29-145                         | 0.1                  |

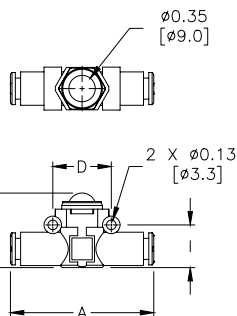
**NITRA** pneumatic push-to-connect in-line quick exhaust valves have a technopolymer body and nickel-plated brass valve insert, with a range of 7 to 150 psi. Normal flow is from inlet to outlet ports. Reversing flow from outlet is directed to exhaust port. These valve are ideal for use with pneumatic actuators that require a very fast stroke speed.

## Features

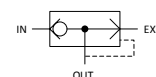
- Works with flexible pneumatic tubing
- Easily added to existing circuits
- Ideal for use with fast stroke air cylinders
- Two-year warranty



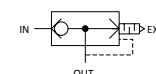
Conveyed Exhaust



Silenced Exhaust



Conveyed Exhaust



Silenced Exhaust

## NITRA Inline Quick Exhaust Valves

*Inch Sizes - dimensions in inches (in.)*

| Part No.        | Price    | Tube Size  | Exhaust  | A    | B    | C    | D    | E    | I    | Inlet Pressure Range (psi) | Inlet Flow Rate (scfm)* | Exhaust Flow Rate (scfm)* | Package Weight (lbs) |
|-----------------|----------|--|----------|------|------|------|------|------|------|----------------------------|-------------------------|---------------------------|----------------------|
| <b>QEU14</b>    | \$;07fe: | 1/4 in. x 1/4 in. x 1/4 in.                      | Conveyed | 1.85 | 1.14 | 0.58 | 0.79 | 0.45 | 0.57 | 14.5-145                   | 9.5                     | 24.7                      | 0.1                  |
| <b>QEU516</b>   | \$;07fg: | 5/16 in. [8mm] x 5/16 in. [8mm] x 5/16 in. [8mm] | Conveyed | 2.18 | 1.37 | 0.74 | 0.94 | 0.54 | 0.74 | 14.5-145                   | 14                      | 35.3                      | 0.1                  |
| <b>QEU14-S</b>  | \$;07ff: | 1/4 in. x 1/4 in.                                | Silenced | 1.85 | 1.0  | 0.58 | 0.79 | 0.45 | 0.57 | 14.5-145                   | 9.5                     | 24.7                      | 0.1                  |
| <b>QEU516-S</b> | \$;07fh: | 5/16 in. x 5/16 in.                              | Silenced | 2.18 | 1.24 | 0.74 | 0.94 | 0.54 | 0.74 | 14.5-145                   | 14                      | 35.3                      | 0.1                  |

\*Flow conditions: 90psi inlet pressure, 14.5 psi ΔP

See our website [www.AutomationDirect.com](http://www.AutomationDirect.com) for complete Engineering drawings.



# Special Purpose Push-to-Connect Pneumatic Fittings

**NITRA** pneumatic inline fittings are special purpose products mounted inline with pneumatic circuits. With these small, highly efficient components it is possible to perform many pneumatic functions at any point in a circuit.

- Ultra-modular
- Components can be connected in parallel
- Push-to-Connect: No tools required!
- Made of lightweight technopolymer
- Stem adapters connect push-to-connect fittings to NPT ports



(Fasteners shown not included)



**Inline Pressure Regulators**  
from \$20.25



**Inline Pressure Gauges**  
from \$17.75



**Inline Pressure Indicators**  
from \$11.75



**Inline Manual Shutoff Valves**  
from \$11.25



**Inline Quick Exhaust Valves**  
from \$8.75



**Stem Adapters**  
from \$3.25