



# G-Series ISO 15552 Pneumatic Cylinders – Accessories

G-Series Heavy Duty Pneumatic Cylinder Accessories					
Part Number	Description	Pcs/Pkg	Wt (lb)	Drawing Link	Price
<a href="#"><u>GRC-M10-125</u></a>	Rod clevis, M10 X 1.25 thread, zinc plated steel. For use with NITRA G-series cylinders.	1	0.2	<a href="#"><u>PDF</u></a>	\$10v3:
<a href="#"><u>GRC-M12-125</u></a>	Rod clevis, M12 X 1.25 thread, zinc plated steel. For use with NITRA G-series cylinders.	1	0.3	<a href="#"><u>PDF</u></a>	\$10v4:
<a href="#"><u>GRC-M16-15</u></a>	Rod clevis, M16 X 1.5 thread, zinc plated steel. For use with NITRA G-series cylinders.	1	0.8	<a href="#"><u>PDF</u></a>	\$10v5:
<a href="#"><u>GRC-M20-15</u></a>	Rod clevis, M20 X 1.5 thread, zinc plated steel. For use with NITRA G-series cylinders.	1	1.5	<a href="#"><u>PDF</u></a>	\$10v6:
<a href="#"><u>GRE-M10-125</u></a>	Rod eye, M10 X 1.25 thread, spherical bearing, zinc plated steel. For use with NITRA G-series cylinders.	1	0.2	<a href="#"><u>PDF</u></a>	\$10v7:
<a href="#"><u>GRE-M12-125</u></a>	Rod eye, M12 X 1.25 thread, spherical bearing, zinc plated steel. For use with NITRA G-series cylinders.	1	0.3	<a href="#"><u>PDF</u></a>	\$10v8:
<a href="#"><u>GRE-M16-15</u></a>	Rod eye, M16 X 1.5 thread, spherical bearing, zinc plated steel. For use with NITRA G-series cylinders.	1	0.5	<a href="#"><u>PDF</u></a>	\$10v9:
<a href="#"><u>GRE-M20-15</u></a>	Rod eye, M20 X 1.5 thread, spherical bearing, zinc plated steel. For use with NITRA G-series cylinders.	1	0.9	<a href="#"><u>PDF</u></a>	\$10va:
<a href="#"><u>GRCP-M10-125</u></a>	Self-aligning rod coupler, M10 X 1.25 thread, zinc plated steel. For use with NITRA G-series cylinders.	1	0.5	<a href="#"><u>PDF</u></a>	\$10vb:
<a href="#"><u>GRCP-M12-125</u></a>	Self-aligning rod coupler, M12 X 1.25 thread, zinc plated steel. For use with NITRA G-series cylinders.	1	0.7	<a href="#"><u>PDF</u></a>	\$10vc:
<a href="#"><u>GRCP-M16-15</u></a>	Self-aligning rod coupler, M16 X 1.5 thread, zinc plated steel. For use with NITRA G-series cylinders.	1	1.4	<a href="#"><u>PDF</u></a>	\$10vd:
<a href="#"><u>GRCP-M20-15</u></a>	Self-aligning rod coupler, M20 X 1.5 thread, zinc plated steel. For use with NITRA G-series cylinders.	1	1.5	<a href="#"><u>PDF</u></a>	\$10ve:
<a href="#"><u>GMB-32MM</u></a>	Foot mount bracket, zinc plated steel. For use with 32mm bore NITRA G-series cylinders.	1	0.2	<a href="#"><u>PDF</u></a>	\$10vf:
<a href="#"><u>GMB-40MM</u></a>	Foot mount bracket, zinc plated steel. For use with 40mm bore NITRA G-series cylinders.	1	0.3	<a href="#"><u>PDF</u></a>	\$10vg:
<a href="#"><u>GMB-50MM</u></a>	Foot mount bracket, zinc plated steel. For use with 50mm bore NITRA G-series cylinders.	1	0.4	<a href="#"><u>PDF</u></a>	\$10vh:
<a href="#"><u>GMB-63MM</u></a>	Foot mount bracket, zinc plated steel. For use with 63mm bore NITRA G-series cylinders.	1	0.6	<a href="#"><u>PDF</u></a>	\$10vi:
<a href="#"><u>GMB-80MM</u></a>	Foot mount bracket, zinc plated steel. For use with 80mm bore NITRA G-series cylinders.	1	1.0	<a href="#"><u>PDF</u></a>	\$10vj:
<a href="#"><u>GMB-100MM</u></a>	Foot mount bracket, zinc plated steel. For use with 100mm bore NITRA G-series cylinders.	1	1.3	<a href="#"><u>PDF</u></a>	\$10vk:
<a href="#"><u>GMC-32MM</u></a>	Rear pivot eye, zinc plated steel. For use with 32mm bore NITRA G-series cylinders.	1	0.2	<a href="#"><u>PDF</u></a>	\$10vl:
<a href="#"><u>GMC-40MM</u></a>	Rear pivot eye, zinc plated steel. For use with 40mm bore NITRA G-series cylinders.	1	0.3	<a href="#"><u>PDF</u></a>	\$10vn:
<a href="#"><u>GMC-50MM</u></a>	Rear pivot eye, zinc plated steel. For use with 50mm bore NITRA G-series cylinders.	1	0.6	<a href="#"><u>PDF</u></a>	\$10vo:
<a href="#"><u>GMC-63MM</u></a>	Rear pivot eye, zinc plated steel. For use with 63mm bore NITRA G-series cylinders.	1	0.9	<a href="#"><u>PDF</u></a>	\$10vp:
<a href="#"><u>GMC-80MM</u></a>	Rear pivot eye, zinc plated steel. For use with 80mm bore NITRA G-series cylinders.	1	1.5	<a href="#"><u>PDF</u></a>	\$10vq:
<a href="#"><u>GMC-100MM</u></a>	Rear pivot eye, zinc plated steel. For use with 100mm bore NITRA G-series cylinders.	1	2.4	<a href="#"><u>PDF</u></a>	\$10vs:
<a href="#"><u>GSMC-32MM</u></a>	Rear spherical pivot, spherical bearing, zinc plated steel. For use with 32mm bore NITRA G-series cylinders.	1	0.3	<a href="#"><u>PDF</u></a>	\$10vt:
<a href="#"><u>GSMC-40MM</u></a>	Rear spherical pivot, spherical bearing, zinc plated steel. For use with 40mm bore NITRA G-series cylinders.	1	0.4	<a href="#"><u>PDF</u></a>	\$10vu:
<a href="#"><u>GSMC-50MM</u></a>	Rear spherical pivot, spherical bearing, zinc plated steel. For use with 50mm bore NITRA G-series cylinders.	1	0.5	<a href="#"><u>PDF</u></a>	\$10vv:
<a href="#"><u>GSMC-63MM</u></a>	Rear spherical pivot, spherical bearing, zinc plated steel. For use with 63mm bore NITRA G-series cylinders.	1	0.7	<a href="#"><u>PDF</u></a>	\$10vx:
<a href="#"><u>GSMC-80MM</u></a>	Rear spherical pivot, spherical bearing, zinc plated steel. For use with 80mm bore NITRA G-series cylinders.	1	1.3	<a href="#"><u>PDF</u></a>	\$10vy:
<a href="#"><u>GSMC-100MM</u></a>	Rear spherical pivot, spherical bearing, zinc plated steel. For use with 100mm bore NITRA G-series cylinders.	1	1.9	<a href="#"><u>PDF</u></a>	\$10vz:
<a href="#"><u>GFL-32MM</u></a>	Flange mount plate, zinc plated steel. For use with 32mm bore NITRA G-series cylinders.	1	0.5	<a href="#"><u>PDF</u></a>	\$10vj:
<a href="#"><u>GFL-40MM</u></a>	Flange mount plate, zinc plated steel. For use with 40mm bore NITRA G-series cylinders.	1	0.6	<a href="#"><u>PDF</u></a>	\$10v[:
<a href="#"><u>GFL-50MM</u></a>	Flange mount plate, zinc plated steel. For use with 50mm bore NITRA G-series cylinders.	1	1.2	<a href="#"><u>PDF</u></a>	\$10v_:
<a href="#"><u>GFL-63MM</u></a>	Flange mount plate, zinc plated steel. For use with 63mm bore NITRA G-series cylinders.	1	1.5	<a href="#"><u>PDF</u></a>	\$10v#:
<a href="#"><u>GFL-80MM</u></a>	Flange mount plate, zinc plated steel. For use with 80mm bore NITRA G-series cylinders.	1	3.1	<a href="#"><u>PDF</u></a>	\$10v!:
<a href="#"><u>GFL-100MM</u></a>	Flange mount plate, zinc plated steel. For use with 100mm bore NITRA G-series cylinders.	1	4.5	<a href="#"><u>PDF</u></a>	\$10v?:
<a href="#"><u>GN-M10-125</u></a>	Rod nut, M10 X 1.25 thread, zinc plated steel. For use with NITRA G-series cylinders.	1	0.2	<a href="#"><u>PDF</u></a>	\$10v,:
<a href="#"><u>GN-M12-125</u></a>	Rod nut, M12 X 1.25 thread, zinc plated steel. For use with NITRA G-series cylinders.	1	0.2	<a href="#"><u>PDF</u></a>	\$10x0:
<a href="#"><u>GN-M16-15</u></a>	Rod nut, M16 X 1.5 thread, zinc plated steel. For use with NITRA G-series cylinders.	1	0.2	<a href="#"><u>PDF</u></a>	\$10x1:
<a href="#"><u>GN-M20-15</u></a>	Rod nut, M20 X 1.5 thread, zinc plated steel. For use with NITRA G-series cylinders.	1	0.2	<a href="#"><u>PDF</u></a>	\$10x2:



# G-Series ISO Pneumatic Cylinders – Accessories

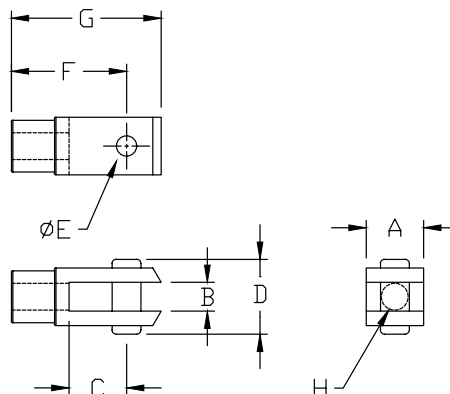
## Rod Clevis



Part no. [GRC-M10-125](#)

### Dimensions

mm [inches]



Note: Comes with Pivot Pin installed.

Rod Clevis Dimension Table								
Part #	A	B	C	D	E	F	G	H
<a href="#">GRC-M10-125</a>	20.00 [0.78]	10.00 [0.39]	10.00 [0.39]	26.00 [1.02]	10.00 [0.39]	40.00 [1.57]	52.00 [2.04]	M10x1.25
<a href="#">GRC-M12-125</a>	24.00 [0.94]	12.00 [0.47]	24.00 [0.94]	32.00 [1.25]	12.00 [0.47]	48.00 [1.88]	62.00 [2.44]	M12x1.25
<a href="#">GRC-M16-15</a>	32.00 [1.25]	16.00 [0.62]	32.00 [1.25]	40.00 [1.57]	16.00 [0.62]	64.00 [2.51]	83.00 [3.26]	M16x1.5
<a href="#">GRC-M20-15</a>	40.00 [1.57]	20.00 [0.78]	40.00 [1.57]	48.00 [1.88]	20.00 [0.78]	80.00 [3.14]	105.00 [4.13]	M20x1.5

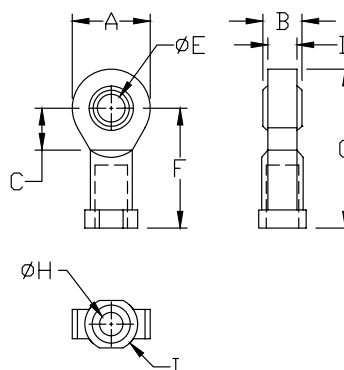
## Rod Eye



Part no. [GRE-M10-125](#)

### Dimensions

mm [inches]



Rod Eye Dimension Table									
Part #	A	B	C	D	E	F	G	H	I
<a href="#">GRE-M10-125</a>	28.00 [1.10]	14.00 [0.55]	15.00 [0.59]	10.50 [0.41]	10.00 [0.39]	43.00 [1.69]	57.00 [2.24]	M10x1.25	19 [0.74]
<a href="#">GRE-M12-125</a>	32.00 [1.25]	16.00 [0.62]	17.00 [0.66]	12.00 [0.47]	12.00 [0.47]	50.00 [1.96]	66.00 [2.59]	M12x1.25	19 [0.74]
<a href="#">GRE-M16-15</a>	42.00 [1.65]	21.00 [0.82]	22.00 [0.86]	15.00 [0.59]	16.00 [0.62]	64.00 [2.51]	85.00 [3.34]	M16x1.5	22 [0.86]
<a href="#">GRE-M20-15</a>	50.00 [1.96]	25.00 [0.98]	26.00 [1.02]	18.00 [0.70]	20.00 [0.78]	77.00 [3.03]	102.00 [4.01]	M20x1.5	27 [1.06]

See our website [www.AutomationDirect.com](http://www.AutomationDirect.com) for complete Engineering drawings.



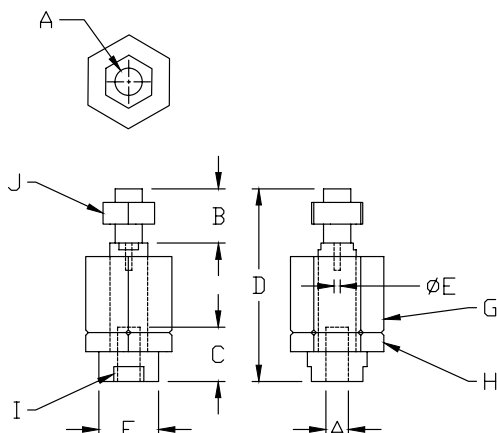
# G-Series ISO Pneumatic Cylinders – Accessories

## Self Aligning Rod Coupler

Part no. [GRCP-M10-125](#)

### Dimensions

mm [inches]



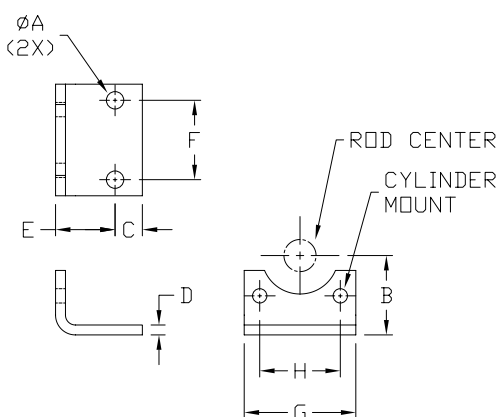
Self Aligning Rod Coupler Dimension Table										
Part #	A	B	C	D	E	F	G	H	I	J
<a href="#">GRCP-M10-125</a>	M10x1.25	20.00 [0.78]	20.00 [0.78]	71.00 [2.79]	4.00 [0.15]	22.00 [0.86]	30.00 [1.18]	30.00 [1.18]	19.00 [0.74]	17.00 [0.66]
<a href="#">GRCP-M12-125</a>	M12x1.25	24.00 [0.94]	20.00 [0.78]	75.00 [2.95]	4.00 [0.15]	22.00 [0.86]	30.00 [1.18]	30.00 [1.18]	19.00 [0.74]	19.00 [0.74]
<a href="#">GRCP-M16-15</a>	M16x1.5	32.00 [1.25]	32.00 [1.25]	103.00 [4.05]	4.00 [0.15]	32.00 [1.25]	41.00 [1.61]	41.00 [1.61]	30.00 [1.18]	24.00 [0.94]
<a href="#">GRCP-M20-15</a>	M20x1.5	40.00 [1.57]	40.00 [1.57]	119.00 [4.68]	4.00 [0.15]	32.00 [1.25]	41.00 [1.61]	41.00 [1.61]	30.00 [1.18]	30.00 [1.18]

## Foot Mount Bracket

Part no. [GMB-32MM](#)

### Dimensions

mm [inches]



Note: Individually packed with 2 screws

Foot Mount Dimension Table								
Part #	A	B	C	D	E	F	G	H
<a href="#">GMB-32MM</a>	7.00 [0.27]	32.00 [1.25]	11.00 [0.43]	4.00 [0.15]	24.00 [0.94]	32.00 [1.25]	45.00 [1.77]	32.5 [1.28]
<a href="#">GMB-40MM</a>	9.00 [0.35]	36.00 [1.41]	15.00 [0.59]	4.00 [0.15]	28.00 [1.10]	36.00 [1.41]	52.00 [2.04]	38.0 [1.50]
<a href="#">GMB-50MM</a>	9.00 [0.35]	45.00 [1.77]	15.00 [0.59]	4.00 [0.15]	32.00 [1.25]	45.00 [1.77]	52.00 [2.04]	46.5 [1.83]
<a href="#">GMB-63MM</a>	9.00 [0.35]	50.00 [1.96]	15.00 [0.59]	6.00 [0.23]	32.00 [1.25]	50.00 [1.96]	75.00 [2.95]	56.5 [2.22]
<a href="#">GMB-80MM</a>	12.00 [0.47]	63.00 [2.48]	20.00 [0.78]	6.00 [0.23]	41.00 [1.61]	63.00 [2.48]	95.00 [3.74]	63.0 [2.48]
<a href="#">GMB-100MM</a>	14.00 [0.55]	71.00 [2.79]	25.00 [0.98]	6.00 [0.23]	41.00 [1.61]	75.00 [2.95]	115.00 [4.52]	89.0 [3.50]

See our website [www.AutomationDirect.com](http://www.AutomationDirect.com) for complete Engineering drawings.



# G-Series ISO Pneumatic Cylinders – Accessories

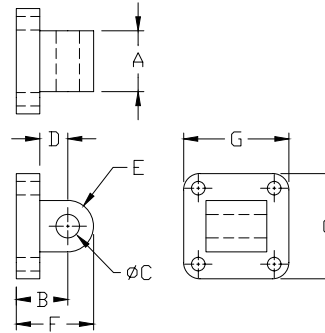
## Rear Pivot Eye



Part no. [GMC-32MM](#)

### Dimensions

mm [inches]



Note: Supplied with 4 screws, 4 washers

**Male Rear Clevis Dimension Table**

Part #	A	B	C	D	E	F	G
<a href="#">GMC-32MM</a>	26.00 [1.02]	22.00 [0.86]	10.00 [0.39]	12.00 [0.47]	11.00 [0.43]	33.00 [1.29]	45.00 [1.77]
<a href="#">GMC-40MM</a>	28.00 [1.10]	25.00 [0.98]	12.00 [0.47]	15.00 [0.59]	13.00 [0.51]	38.00 [1.49]	52.00 [2.04]
<a href="#">GMC-50MM</a>	32.00 [1.25]	27.00 [1.06]	12.00 [0.47]	15.00 [0.59]	13.00 [0.51]	40.00 [1.57]	65.00 [2.55]
<a href="#">GMC-63MM</a>	40.00 [1.57]	32.00 [1.25]	16.00 [0.62]	20.00 [0.78]	17.00 [0.66]	49.00 [1.92]	75.00 [2.95]
<a href="#">GMC-80MM</a>	50.00 [1.96]	36.00 [1.41]	16.00 [0.62]	20.00 [0.78]	17.00 [0.66]	53.00 [2.08]	95.00 [3.74]
<a href="#">GMC-100MM</a>	60.00 [2.36]	41.00 [1.61]	20.00 [0.78]	25.00 [0.98]	21.00 [0.82]	62.00 [2.44]	115.00 [4.52]

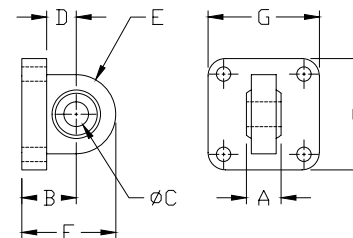
## Spherical Rear Pivot



Part no. [GSMC-32MM](#)

### Dimensions

mm [inches]



Note: Supplied with 4 screws, 4 washers

**Spherical Male Clevis Dimension Table**

Part #	A	B	C	D	E	F	G
<a href="#">GSMC-32MM</a>	14.00 [0.55]	22.00 [0.86]	10.00 [0.39]	12.00 [0.47]	16.00 [0.62]	38.00 [1.49]	45.00 [1.77]
<a href="#">GSMC-40MM</a>	16.00 [0.62]	25.00 [0.98]	12.00 [0.47]	15.00 [0.59]	19.00 [0.74]	44.00 [1.73]	52.00 [2.04]
<a href="#">GSMC-50MM</a>	16.00 [0.62]	27.00 [1.06]	12.00 [0.47]	15.00 [0.59]	19.00 [0.74]	46.00 [1.81]	65.00 [2.55]
<a href="#">GSMC-63MM</a>	21.00 [0.82]	32.00 [1.25]	16.00 [0.62]	20.00 [0.78]	24.00 [0.94]	56.00 [2.20]	75.00 [2.95]
<a href="#">GSMC-80MM</a>	21.00 [0.82]	36.00 [1.41]	16.00 [0.62]	20.00 [0.78]	24.00 [0.94]	60.00 [2.36]	95.00 [3.74]
<a href="#">GSMC-100MM</a>	25.00 [0.98]	41.00 [1.61]	20.00 [0.78]	25.00 [0.98]	30.00 [1.18]	71.00 [2.79]	115.00 [4.52]

See our website [www.AutomationDirect.com](http://www.AutomationDirect.com) for complete Engineering drawings.



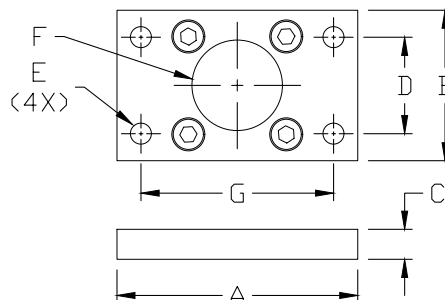
# G-Series ISO Pneumatic Cylinders – Accessories

## Front or Rear Flange

Part no. [GFL-32MM](#)

### Dimensions

mm [inches]



Note: Supplied with 4 screws

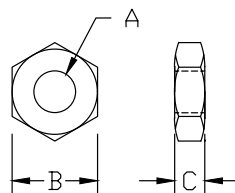
Front or Rear Flange Dimension Table							
Part #	A	B	C	D	E	F	G
<a href="#">GFL-32MM</a>	80.00 [3.14]	50.00 [1.96]	10.00 [0.39]	32.00 [1.25]	7.00 [1.25]	32.00 [1.25]	64.00 [2.52]
<a href="#">GFL-40MM</a>	90.00 [3.54]	55.00 [2.16]	10.00 [0.39]	36.00 [1.41]	9.00 [0.35]	40.00 [1.57]	72.00 [2.83]
<a href="#">GFL-50MM</a>	110.00 [4.33]	65.00 [2.55]	12.00 [0.47]	45.00 [1.77]	9.00 [0.35]	50.00 [1.96]	90.00 [3.54]
<a href="#">GFL-63MM</a>	120.00 [4.72]	75.00 [2.95]	12.00 [0.47]	50.00 [1.96]	9.00 [0.35]	63.00 [2.48]	100.00 [3.93]
<a href="#">GFL-80MM</a>	153.00 [6.02]	95.00 [3.74]	16.00 [0.62]	63.00 [2.48]	12.00 [0.47]	80.00 [3.14]	126.00 [4.96]
<a href="#">GFL-100MM</a>	178.00 [7.00]	115.00 [4.52]	16.00 [0.62]	75.00 [2.95]	14.00 [0.55]	100.00 [3.93]	150.00 [5.90]

## Rod Nut

Part no. [GN-M20-15](#)

### Dimensions

mm [inches]



Rod Nut Dimension Table			
Part #	A	B	C
<a href="#">GN-M10-125</a>	M10x1.25	17.00 [0.66]	6.00 [0.23]
<a href="#">GN-M12-125</a>	M12x1.25	19.00 [0.74]	7.00 [0.27]
<a href="#">GN-M16-15</a>	M16x1.5	24.00 [0.94]	8.00 [0.31]
<a href="#">GN-M20-15</a>	M20x1.5	30.00 [1.18]	9.00 [0.35]

See our website [www.AutomationDirect.com](http://www.AutomationDirect.com) for complete Engineering drawings.