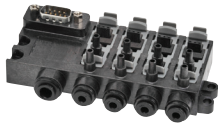




Manifolds for Modular Solenoid Valves – BVM-3 Series



BVM - 4-Station

NITRA pneumatic BVM-3 series modular manifolds simplify the mounting and wiring of BVS-3 series solenoid valves*. Made of sturdy glass reinforced thermoplastic with DIN rail mounting clips included, they are available in 4 and 8-station models. Push-to-connect inlet and out connections and a 9-pin D-sub connector allow quick and easy tubing and wiring.

Features

- No tools required to install/remove valves
- 2, 3, 4 or 8-station manifolds available
- 6mm or 1/4" tube inlets
- 35mm DIN rail mounting clips included
- 9-pin D-sub connector for easy wiring
- 2-year warranty



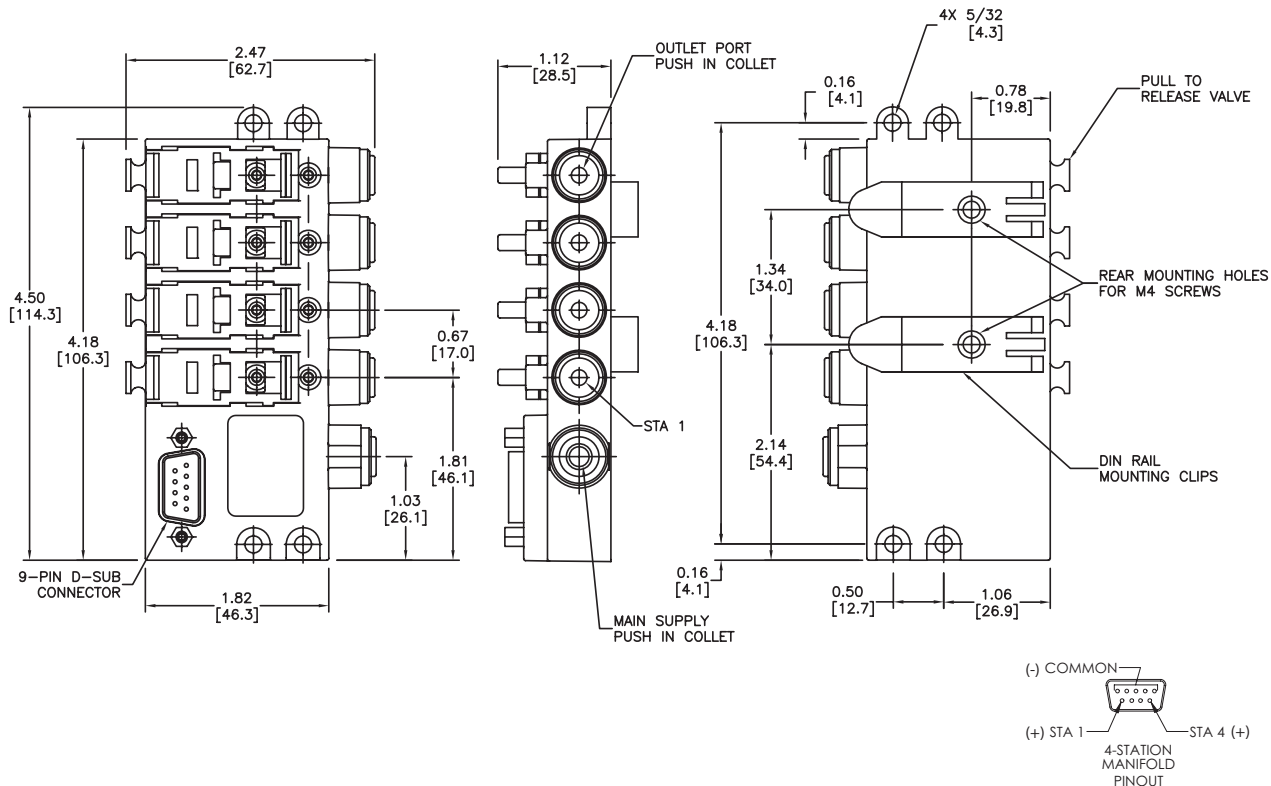
BVM Series Manifolds						
Part No.	Stations	Inlet	Outlet	Connection	Price	Weight (lbs)
BVM-346M	4	6mm	5/32" (4mm)	9-pin D-sub	Retired	0.3

* Works with BVS series valves with flying leads ONLY. Does not accept DIN connector valves

Dimensions

inches [mm]

4-Station Manifold



See our website www.AutomationDirect.com for complete Engineering drawings.

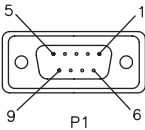


Pneumatic Directional Control Solenoid Valves – BVS Series - Accessories

Accessories

BVM Series Manifold Accessories			
Part No.	Description	Price	Weight (lbs)
ZL-DB9F-CBL-2P	ZIPLink pigtail cable with 9-pin D-sub female connector, 28AWG, 2.0 meter (6.6 ft) length	\$04no:	0.3
ZL-DB9F-CBL-5P	ZIPLink pigtail cable with 9-pin D-sub female connector, 28AWG, 5.0 meter (16.4 ft) length	\$04np:	0.5

ZL-DB9F-CBL-xP Pinout

		pin out	
P1	P2	for BVM Series 4-station man	for BVM Series 8-station man
1	black	N/A	station 4
2	brown	N/A	station 3
3	red	N/A	station 2
4	orange	N/A	station 1
5	yellow	common	common
6	green	station 1	station 5
7	blue	station 2	station 6
8	violet	station 3	station 7
9	grey	station 4	station 8



ZL-DB9F-CBL-xP



See solenoid valve cables and connectors section



Above photo shows an assembled BVM Series manifold with BVS Series Solenoids and BVM blanking plug
Note: Manifold must have a BVS valve (flying leads ONLY)