



A-Series Pneumatic Cylinders

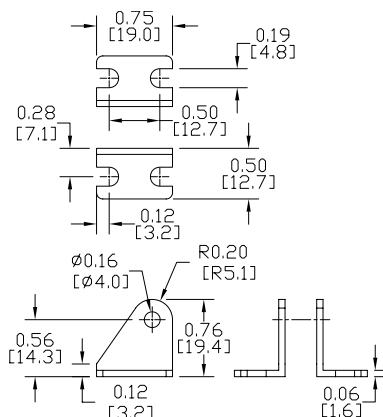
7/16 inch Bore Accessories

A-Series Pneumatic Cylinder 7/16 inch Bore Accessories				
Part Number	Description	Pcs/Pkg	Wt (lb)	Price
<u>APB-1</u>	Cylinder pivot mounting bracket without pivot pin used to mount 7/16 and 9/16 inch bore NITRA pneumatic stainless steel round body, interchangeable, non-repairable cylinders.	1	0.1	\$-5id:
<u>AMB-3</u>	Cylinder mounting bracket used to mount 7/16 inch bore NITRA pneumatic stainless steel round body, interchangeable, non-repairable cylinders.	1	0.1	\$-5i8:
<u>AMB-4</u>	Cylinder mounting bracket used to mount 7/16 and 9/16 inch bore NITRA pneumatic stainless steel round body, interchangeable, non-repairable cylinders.	1	0.1	\$-5i9:
<u>ARC-10-32</u>	Cylinder rod clevis and hex nut, #10-32 thread, for use with 7/16 and 9/16 inch bore NITRA pneumatic stainless steel round body, interchangeable, non-repairable cylinders.	1	0.1	\$5u1:
<u>AN-38-24</u>	Cylinder mounting nut with 3/8-24 UNF-2B threads used to mount 7/16 inch bore NITRA pneumatic stainless steel round body, interchangeable, non-repairable cylinders.	1	0.1	\$;6fx:
<u>AN-716-20</u>	Cylinder mounting nut with 7/16-20 UNF-2B threads used to mount 7/16 inch and 9/16 inch bore NITRA pneumatic stainless steel round body, interchangeable, non-repairable cylinders.	1	0.2	\$;6fz:

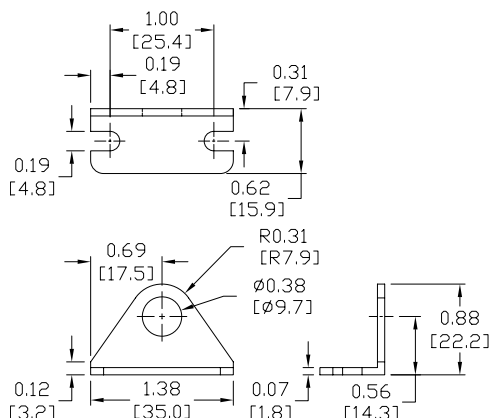
Dimensions

inches [mm]

APB-1



AMB-3





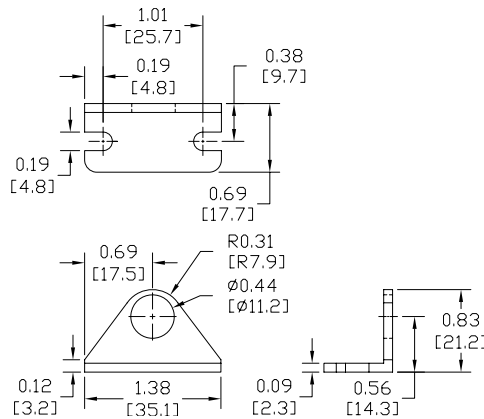
A-Series Pneumatic Cylinders

7/16 inch Bore Accessories

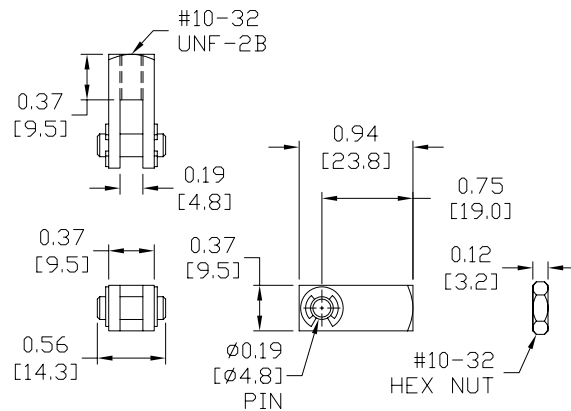
Dimensions

inches [mm]

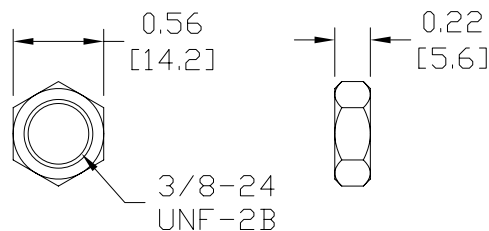
AMB-4



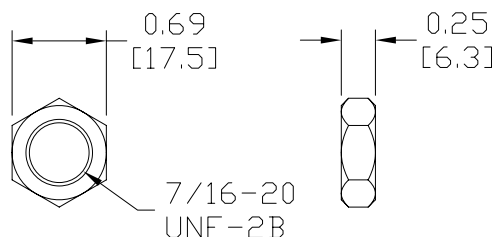
ARC-10-32



AN-38-24



AN-716-20





A-Series Pneumatic Cylinders

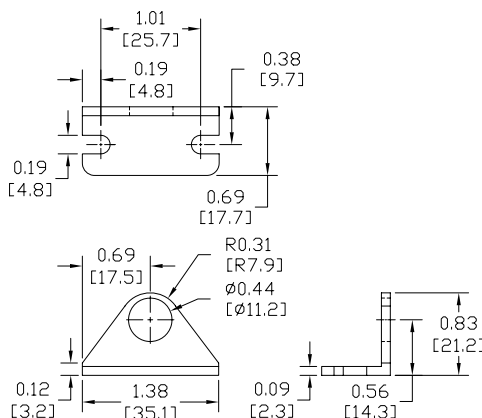
9/16 inch Bore Accessories

A-Series Pneumatic Cylinder 9/16 inch Bore Accessories				
Part Number	Description	Pcs/Pkg	Wt (lb)	Price
<u>AMB-4</u>	Cylinder mounting bracket used to mount 7/16 and 9/16 inch bore NITRA pneumatic stainless steel round body, interchangeable, non-repairable cylinders.	1	0.1	\$-519:
<u>ARC-10-32</u>	Cylinder rod clevis and hex nut, #10-32 thread, for use with 7/16 and 9/16 inch bore NITRA pneumatic stainless steel round body, interchangeable, non-repairable cylinders.	1	0.1	\$5u1:
<u>APBP-2</u>	Cylinder pivot mounting bracket with pivot pin used to mount 9/16 inch bore NITRA pneumatic stainless steel round body, interchangeable, non-repairable cylinders.	1	0.1	\$-5ig:
<u>AN-716-20</u>	Cylinder mounting nut with 7/16-20 UNF-2B threads used to mount 7/16 inch and 9/16 inch bore NITRA pneumatic stainless steel round body, interchangeable, non-repairable cylinders.	1	0.2	\$,6fz:

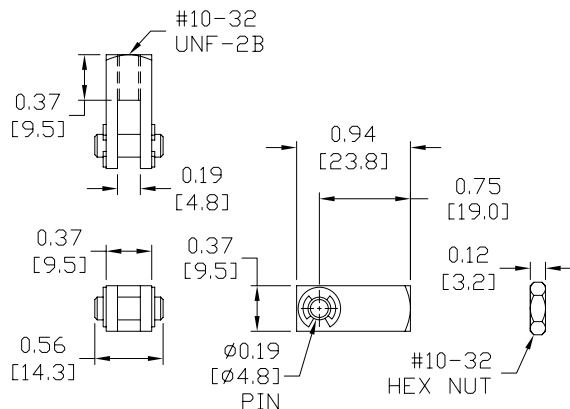
Dimensions

inches [mm]

AMB-4



ARC-10-32





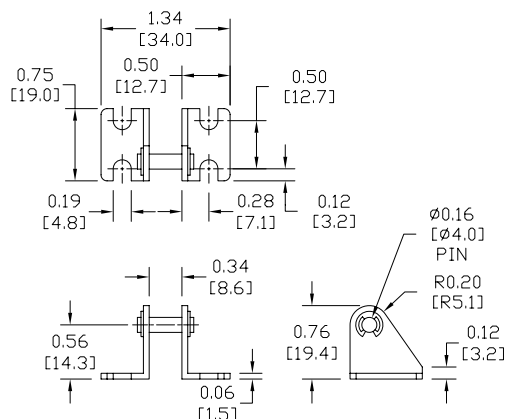
A-Series Pneumatic Cylinders

9/16 inch Bore Accessories

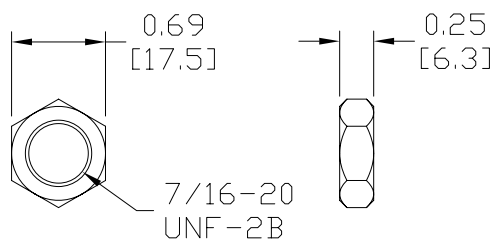
Dimensions

inches [mm]

APBP-2



AN-716-20





A-Series Pneumatic Cylinders

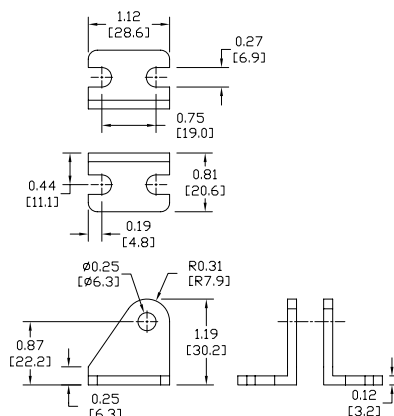
3/4 inch Bore Accessories

A-Series Pneumatic Cylinder 3/4 inch Bore Accessories				
Part Number	Description	Pcs/Pkg	Wt (lb)	Price
<u>APB-2</u>	Cylinder pivot mounting bracket without pivot pin used to mount 3/4, 7/8, and 1-1/16 inch bore NITRA pneumatic stainless steel round body, interchangeable, non-repairable cylinders.	1	0.1	\$-5ie:
<u>AMB-5</u>	Cylinder mounting bracket used to mount 3/4 inch bore NITRA pneumatic stainless steel round body, interchangeable, non-repairable cylinders.	1	0.1	\$-5ia:
<u>AMB-6</u>	Cylinder mounting bracket used to mount 3/4, 7/8, and 1-1/16 inch bore NITRA pneumatic stainless steel round body, interchangeable, non-repairable cylinders.	1	0.1	\$-5ib:
<u>ARC-14-28</u>	Cylinder rod clevis and hex nut, 1/4-28 thread, for use with 3/4 and 7/8 inch bore NITRA pneumatic stainless steel round body, interchangeable, non-repairable cylinders.	1	0.1	\$5u3:
<u>AN-58-18</u>	Cylinder mounting nut with 5/8-18 UNF-2B threads used to mount 3/4, 7/8 and 1-1/16 inch bore NITRA pneumatic stainless steel round body, interchangeable, non-repairable cylinders.	1	0.1	\$;6fy:
<u>AN-12-20</u>	Cylinder mounting nut with 1/2-10 UNF-2B threads used to mount 3/4 inch bore NITRA pneumatic stainless steel round body, interchangeable, non-repairable cylinders.	1	0.2	\$;6fu:

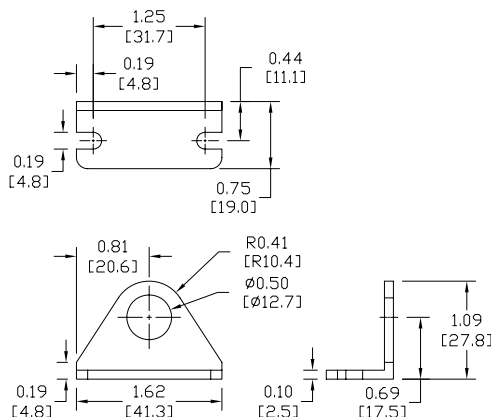
Dimensions

inches [mm]

[APB-2](#)



[AMB-5](#)





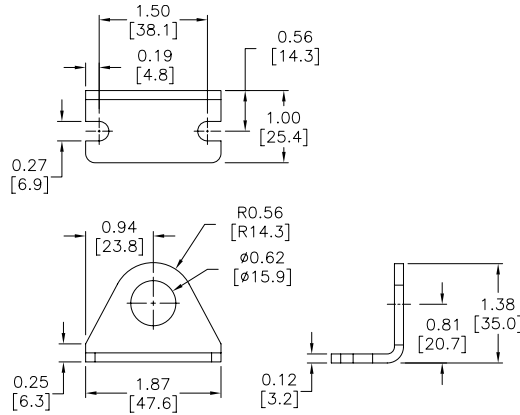
A-Series Pneumatic Cylinders

3/4 inch Bore Accessories

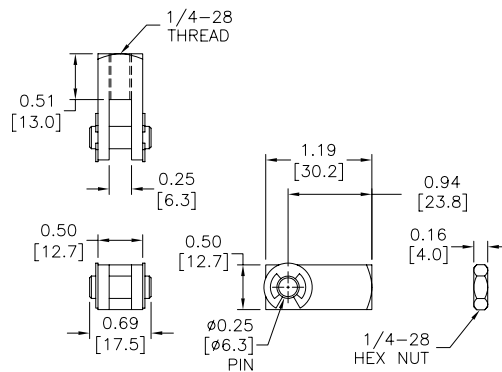
Dimensions

inches [mm]

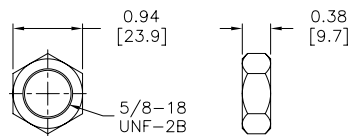
AMB-6



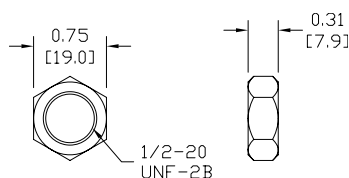
ARC-14-28



AN-58-18



AN-12-20





A-Series Pneumatic Cylinders

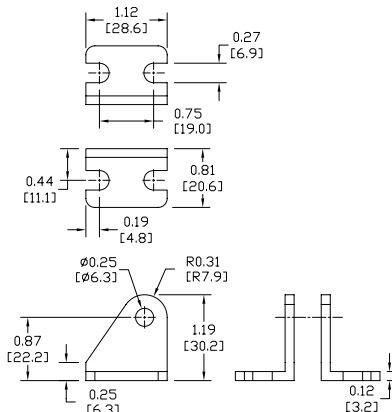
7/8 inch Bore Accessories

A-Series Pneumatic Cylinder 7/8 inch Bore Accessories				
Part Number	Description	Pcs/Pkg	Wt (lb)	Price
<u>APB-2</u>	Cylinder pivot mounting bracket without pivot pin used to mount 3/4, 7/8, and 1-1/16 inch bore, NITRA pneumatic, stainless steel, round body, interchangeable, non-repairable cylinders.	1	0.1	\$-5ie:
<u>AMB-6</u>	Cylinder mounting bracket used to mount 3/4, 7/8, and 1-1/16 inch bore NITRA pneumatic, stainless steel, round body, interchangeable, non-repairable cylinders.	1	0.1	\$-5ib:
<u>APBP-3</u>	Cylinder pivot mounting bracket with pivot pin used to mount 7/8 inch bore NITRA pneumatic, stainless steel, round body, interchangeable, non-repairable cylinders.	1	0.1	\$-5ih:
<u>ARC-14-28</u>	Cylinder rod clevis and hex nut, 1/4-28 thread, for use with 3/4 and 7/8 inch bore NITRA pneumatic, stainless steel, round body, interchangeable, non-repairable cylinders.	1	0.1	\$5u3:
<u>AN-58-18</u>	Cylinder mounting nut with 5/8-18 UNF-2B threads used to mount 3/4, 7/8 and 1-1/16 inch bore NITRA pneumatic, stainless steel, round body, interchangeable, non-repairable cylinders.	1	0.1	\$;6fy:

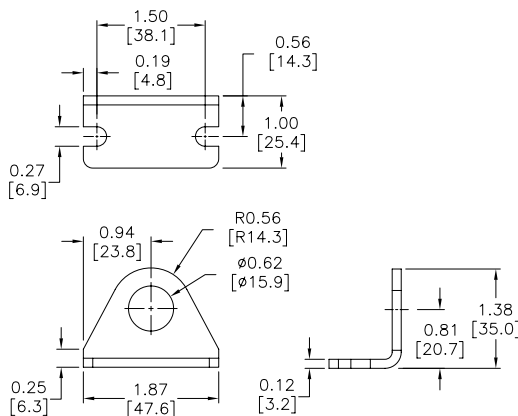
Dimensions

inches [mm]

APB-2



AMB-6





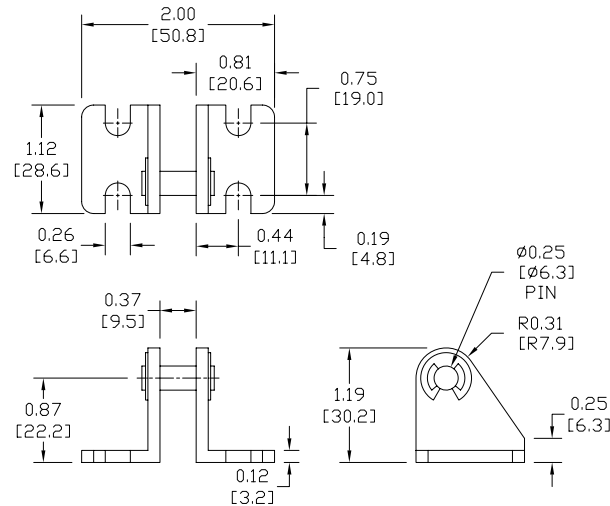
A-Series Pneumatic Cylinders

7/8 inch Bore Accessories

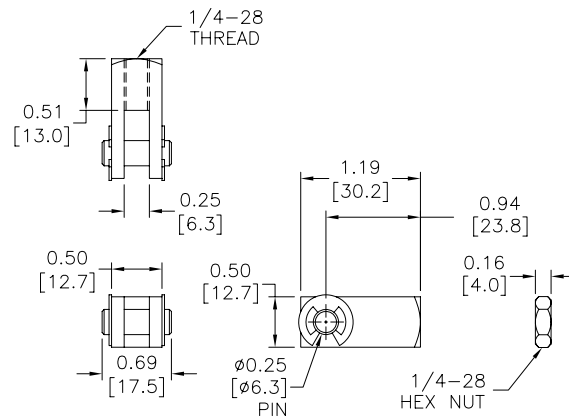
Dimensions

inches [mm]

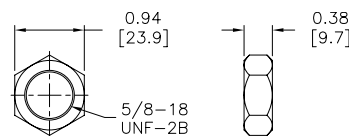
APBP-3



ARC-14-28



AN-58-18





A-Series Pneumatic Cylinders

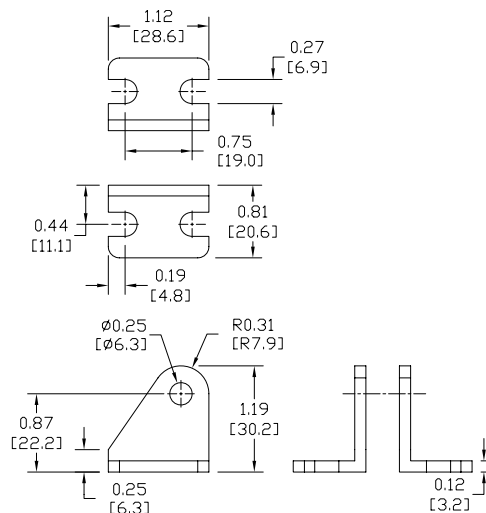
1-1/16 inch Bore Accessories

A-Series Pneumatic Cylinder 1-1/16 inch Bore Accessories				
Part Number	Description	Pcs/Pkg	Wt (lb)	Price
<u>APB-2</u>	Cylinder pivot mounting bracket without pivot pin used to mount 3/4, 7/8, and 1-1/16 inch bore NITRA pneumatic stainless steel round body, interchangeable, non-repairable cylinders.	1	0.2	\$-5ie:
<u>AMB-6</u>	Cylinder mounting bracket used to mount 3/4, 7/8, and 1-1/16 inch bore NITRA pneumatic stainless steel round body, interchangeable, non-repairable cylinders.	1	0.1	\$-5ib:
<u>ARC-516-24</u>	Cylinder rod clevis and hex nut, 5/16-24 thread, for use with 1-1/16 inch bore NITRA pneumatic stainless steel round body, interchangeable, non-repairable cylinders.	1	0.1	\$5u4:
<u>AN-58-18</u>	Cylinder mounting nut with 5/8-18 UNF-2B threads used to mount 3/4, 7/8 and 1-1/16 inch bore NITRA pneumatic stainless steel round body, interchangeable, non-repairable cylinders.	1	0.1	\$,6fy:

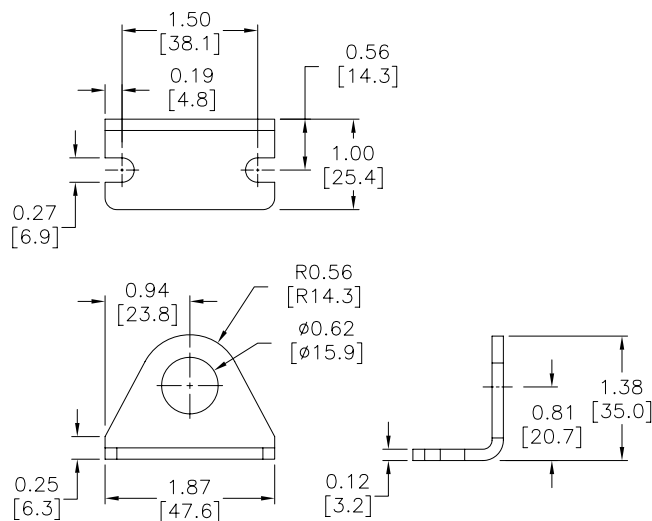
Dimensions

inches [mm]

APB-2



AMB-6





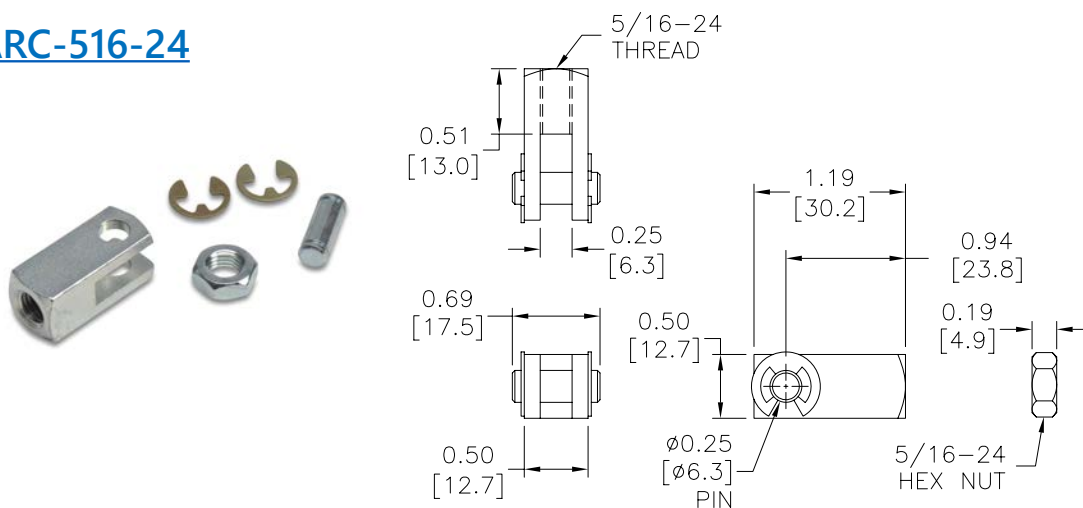
A-Series Pneumatic Cylinders

1-1/16 inch Bore Accessories

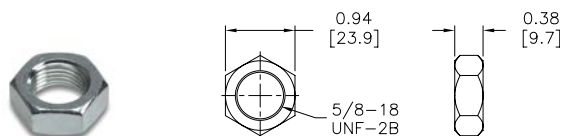
Dimensions

inches [mm]

ARC-516-24



AN-58-18





A-Series Pneumatic Cylinders

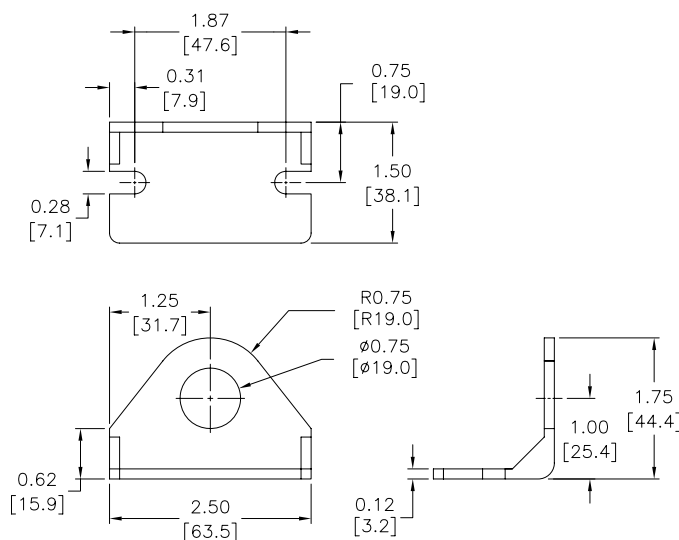
1-1/4 inch Bore Accessories

A-Series Pneumatic Cylinder 1-1/4 inch Bore Accessories				
Part Number	Description	Pcs/Pkg	Wt (lb)	Price
<u>AMB-7</u>	Cylinder mounting bracket used to mount 1-1/4 and 1-1/2 inch bore NITRA pneumatic stainless steel round body, interchangeable, non-repairable cylinders.	1	0.2	\$-5ic:
<u>APBP-4</u>	Cylinder pivot mounting bracket with pivot pin used to mount 1-1/4 inch bore NITRA pneumatic stainless steel round body, interchangeable, non-repairable cylinders.	1	0.1	\$-05ii:
<u>ARC-716-20</u>	Cylinder rod clevis and hex nut, 7/16-20 thread, for use with 1-1/4 and 1-1/2 inch bore NITRA pneumatic stainless steel round body, interchangeable, non-repairable cylinders.	1	0.1	\$5u5:
<u>AN-34-16</u>	Cylinder mounting nut with 3/4-16 UNF-2B threads used to mount 1-1/4 and 1-1/2 inch bore NITRA pneumatic stainless steel round body, interchangeable, non-repairable cylinders.	1	0.1	\$;6fv:

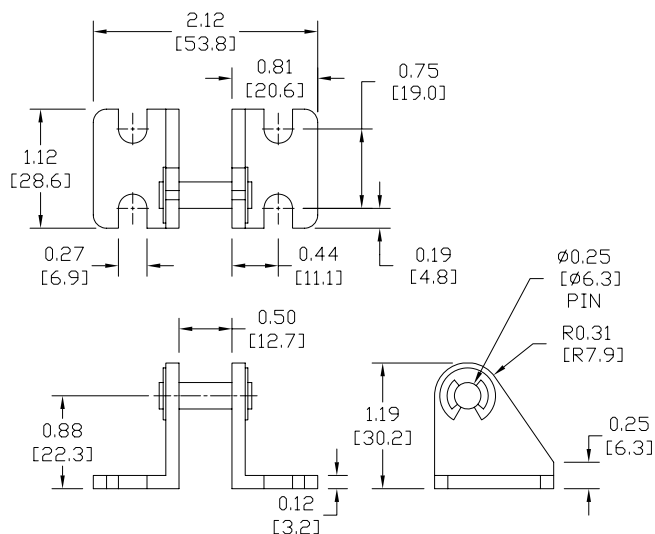
Dimensions

inches [mm]

AMB-7



APBP-4





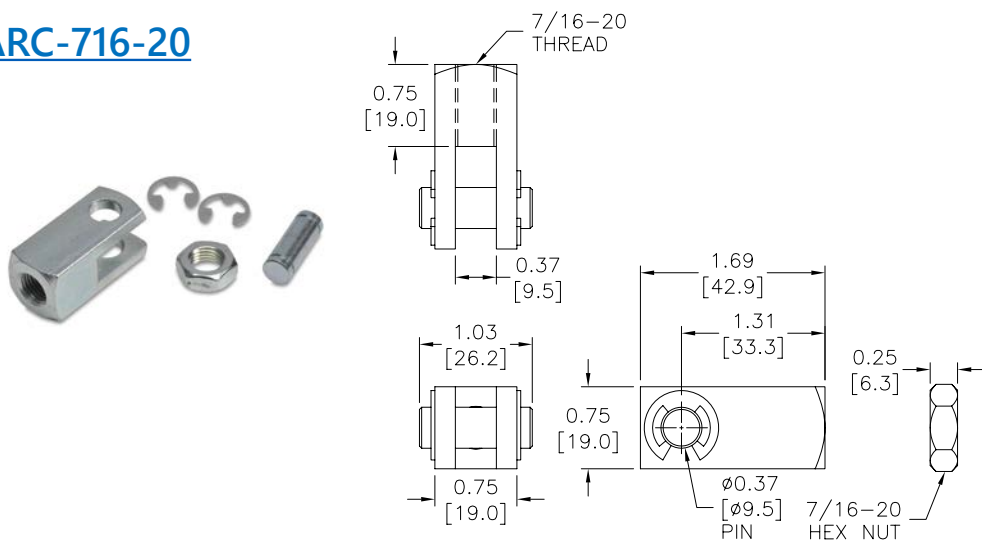
A-Series Pneumatic Cylinders

1-1/4 inch Bore Accessories

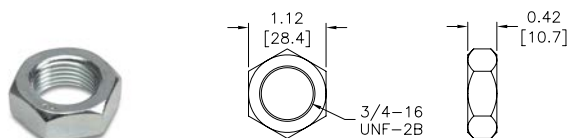
Dimensions

inches [mm]

ARC-716-20



AN-34-16





A-Series Pneumatic Cylinders

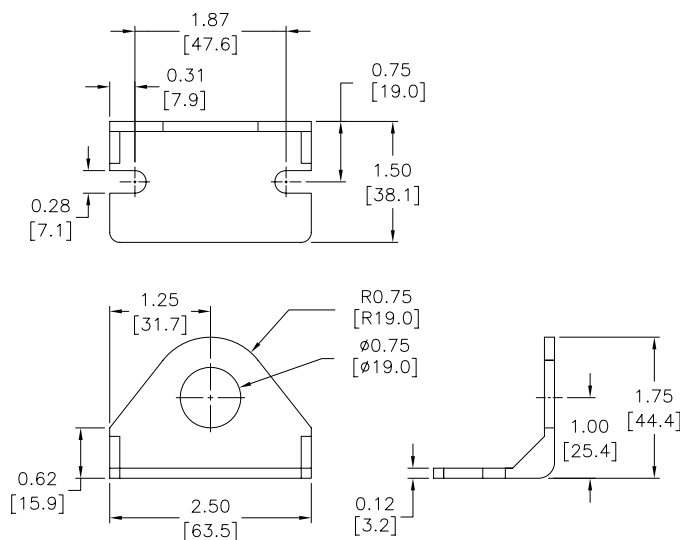
1-1/2 inch Bore Accessories

A-Series Pneumatic Cylinder 1-1/2 inch Bore Accessories				
Part Number	Description	Pcs/Pkg	Wt (lb)	Price
<u>AMB-7</u>	Cylinder mounting bracket used to mount 1-1/4 and 1-1/2 inch bore NITRA pneumatic stainless steel round body, interchangeable, non-repairable cylinders.	1	0.2	\$-5ic:
<u>APB-3</u>	Cylinder pivot mounting bracket without pivot pin used to mount 1-1/2 bore NITRA pneumatic stainless steel round body, interchangeable, non-repairable cylinders.	1	0.2	\$,-05if:
<u>ARC-716-20</u>	Cylinder rod clevis and hex nut, 7/16-20 thread, for use with 1-1/4 and 1-1/2 inch bore NITRA pneumatic stainless steel round body, interchangeable, non-repairable cylinders.	1	0.1	\$5u5:
<u>AN-34-16</u>	Cylinder mounting nut with 3/4-16 UNF-2B threads used to mount 1-1/4 and 1-1/2 inch bore NITRA pneumatic stainless steel round body, interchangeable, non-repairable cylinders.	1	0.1	\$,6fv:

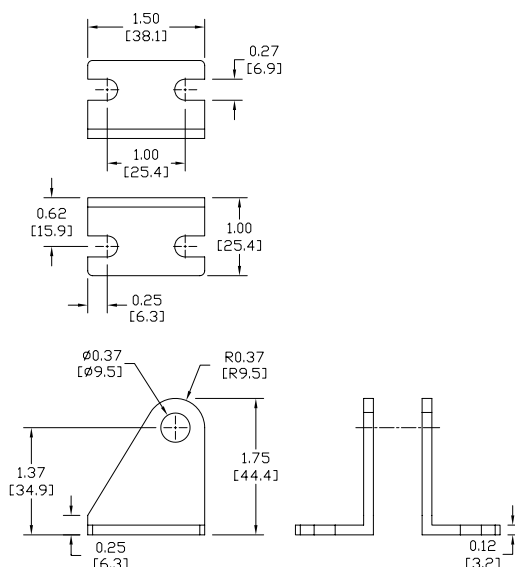
Dimensions

inches [mm]

AMB-7



APB-3





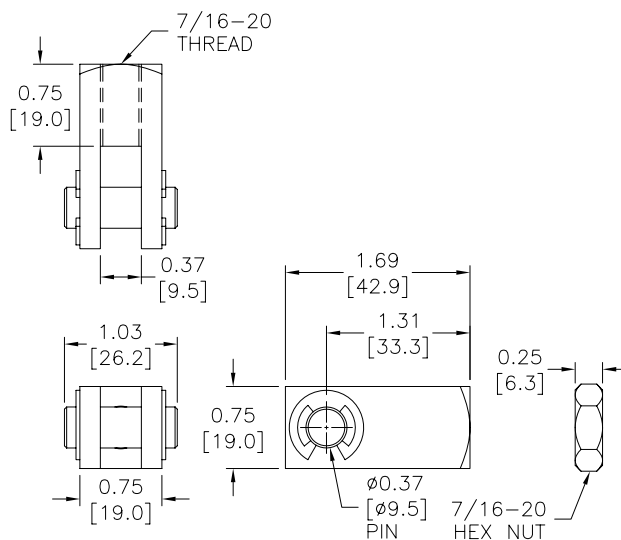
A-Series Pneumatic Cylinders

1-1/2 inch Bore Accessories

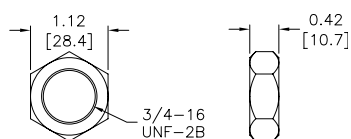
Dimensions

inches [mm]

ARC-716-20



AN-34-16





A-Series Pneumatic Cylinders

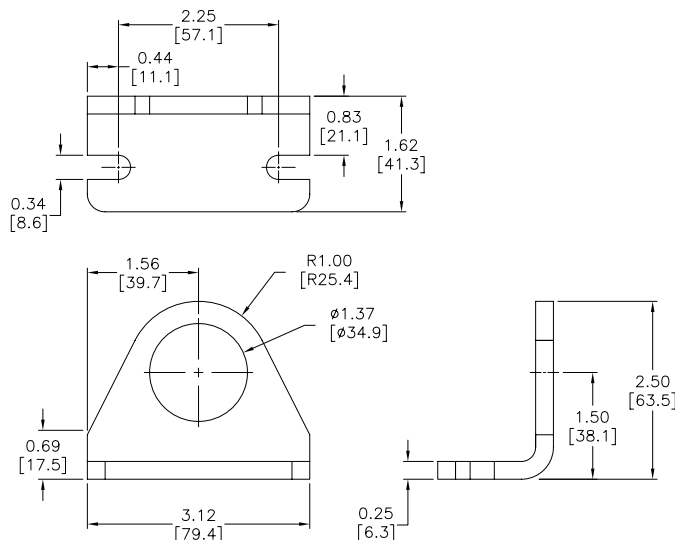
2 inch Bore Accessories

A-Series Pneumatic Cylinder 2 inch Bore Accessories				
Part Number	Description	Pcs/Pkg	Wt (lb)	Price
<u>AMB-11</u>	Cylinder mounting bracket used to mount 2 inch bore NITRA pneumatic stainless steel round body, interchangeable, non-repairable cylinders.	1	0.5	\$-05i7:
<u>APBP-5</u>	Cylinder pivot mounting bracket with pivot pin used to mount 2 inch bore NITRA pneumatic stainless steel round body, interchangeable, non-repairable cylinders.	1	0.4	\$-05ij:
<u>ARC-12-20</u>	Cylinder rod clevis and hex nut, 1/2-20 thread, for use with 2 inch bore NITRA pneumatic stainless steel round body, interchangeable, non-repairable cylinders.	1	0.2	\$5u2:
<u>AN-114-12</u>	Cylinder mounting nut with 1-1/4-12 UNF-2B threads used to mount 2 inch bore NITRA pneumatic stainless steel round body, interchangeable, non-repairable cylinders.	1	0.3	\$-;6ft:

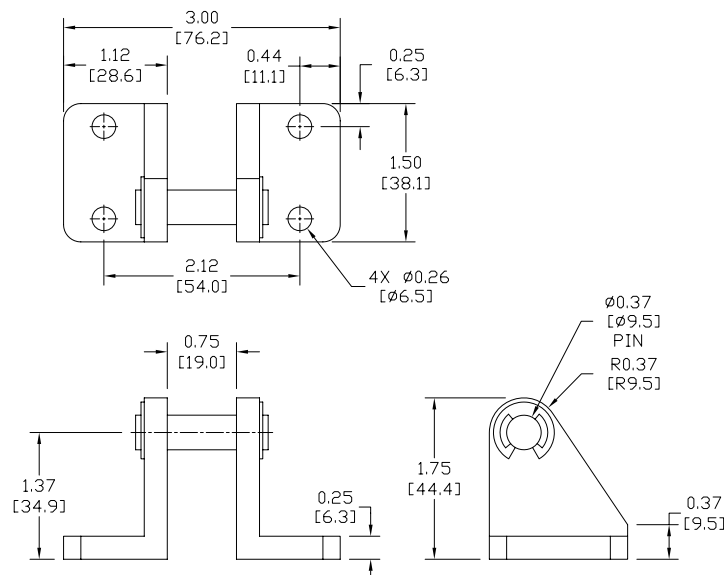
Dimensions

inches [mm]

AMB-11



APBP-5





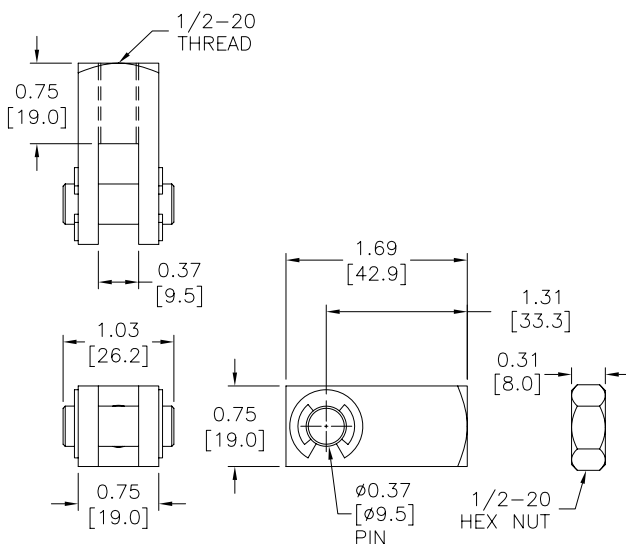
A-Series Pneumatic Cylinders

2 inch Bore Accessories

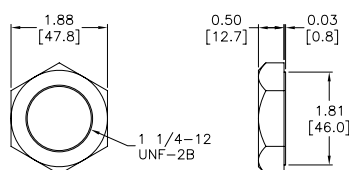
Dimensions

inches [mm]

ARC-12-20



AN-114-12





CPS Series Cylinder Position Switches

Position Switch Cross Reference Chart

NITRA Switch Type	Cylinder Brand (may fit some of these cylinders)	Photo Example	Groove Illustration	
CPS CPSF	NITRA A-Series NITRA D-Series NITRA F-Series			
CPS9C	DE-STA-CO Robohand SMC Compact Air Bimba Fabco			
CPS9D	NITRA L-Series Fabco Numatics Rotomation			
CPS9E	NITRA L-Series Fabco Numatics Rotomation			
CPS9F	NITRA G-Series Fabco Festo Numatics Rotomation			
CPS9H	NITRA E-Series NITRA H-Series			
CPS9M	Norgren			
CPS9Q	NITRA L-Series NITRA G-Series Parker Fabco Festo Numatics Rotomation			