



1/8" NPT Aluminum Manifolds

**MRA-4BA****MRA-4BA-180**

NITRA aluminum manifolds

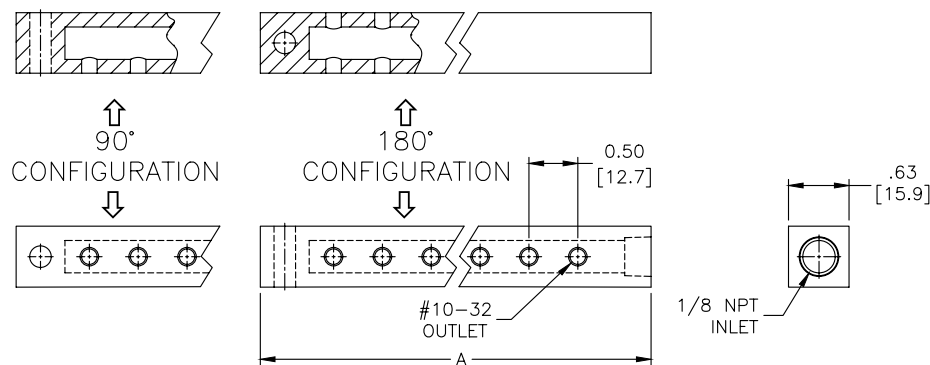
- Black anodized finish
- Maximum input pressure of 1000 psi
- Made in the USA



NITRA 1/8" NPT Aluminum Manifolds					
Part No.	Description	A	Parts Per Pkg	Weight (lbs)	Price
<u>MRA-4BA</u>	NITRA pneumatic manifold, aluminum, rectangular, (1) 1/8 inch female NPT inlet port(s), 4 stations, (1) #10-32 female threaded outlet port(s) per station, standard hole spacing.	3.0 [76.2]	1	0.1	\$111z:
<u>MRA-4BA-180</u>	NITRA pneumatic manifold, aluminum, rectangular, (1) 1/8 inch female NPT inlet port(s), 4 stations, (2) #10-32 female threaded outlet port(s) per station, 180-degree orientation, standard hole spacing.	3.0 [76.2]	1	0.1	\$111#:
<u>MRA-6BA</u>	NITRA pneumatic manifold, aluminum, rectangular, (1) 1/8 inch female NPT inlet port(s), 6 stations, (1) #10-32 female threaded outlet port(s) per station, standard hole spacing.	4.0 [101.6]	1	0.1	\$;111):
<u>MRA-6BA-180</u>	NITRA pneumatic manifold, aluminum, rectangular, (1) 1/8 inch female NPT inlet port(s), 6 stations, (2) #10-32 female threaded outlet port(s) per station, 180-degree orientation, standard hole spacing.	4.0 [101.6]	1	0.1	\$;111!:
<u>MRA-8BA</u>	NITRA pneumatic manifold, aluminum, rectangular, (1) 1/8 inch female NPT inlet port(s), 8 stations, (1) #10-32 female threaded outlet port(s) per station, standard hole spacing.	5.0 [127.0]	1	0.2	\$;111[:
<u>MRA-8BA-180</u>	NITRA pneumatic manifold, aluminum, rectangular, (1) 1/8 inch female NPT inlet port(s), 8 stations, (2) #10-32 female threaded outlet port(s) per station, 180-degree orientation, standard hole spacing.	5.0 [127.0]	1	0.2	\$111?:
<u>MRA-10BA</u>	NITRA pneumatic manifold, aluminum, rectangular, (1) 1/8 inch female NPT inlet port(s), 10 stations, (1) #10-32 female threaded outlet port(s) per station, standard hole spacing.	6.0 [152.4]	1	0.2	\$111_:
<u>MRA-10BA-180</u>	NITRA pneumatic manifold, aluminum, rectangular, (1) 1/8 inch female NPT inlet port(s), 10 stations, (2) #10-32 female threaded outlet port(s) per station, 180-degree orientation, standard hole spacing.	6.0 [152.4]	1	0.2	\$;111,::

Dimensions

inches [mm]



See our website www.AutomationDirect.com for complete Engineering drawings.



1/4" NPT Aluminum Manifolds

**MRA-2CB****MRA-2CB-90****MRA-2CB-W**

NITRA aluminum manifolds

- Black anodized finish
- Maximum input pressure of 1000 psi
- Made in the USA

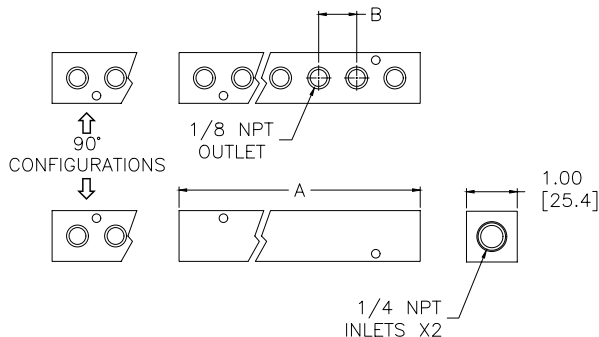


NITRA 1/4" NPT Aluminum Manifolds

Part No.	Description	A	B	Parts Per Pkg	Weight (lbs)	Price
MRA-2CB	NITRA pneumatic manifold, aluminum, rectangular, (2) 1/4 inch female NPT inlet port(s), 2 stations, (1) 1/8 inch female NPT outlet port(s) per station, standard hole spacing.	1.75 [44.5]	0.75 [19.1]	1	0.2	\$:,10,t
MRA-2CB-90	NITRA pneumatic manifold, aluminum, rectangular, (2) 1/4 inch female NPT inlet port(s), 2 stations, (2) 1/8 inch female NPT outlet port(s) per station, 90-degree orientation, standard hole spacing.	1.75 [44.5]	0.75 [19.1]	1	0.1	\$:,10,u
MRA-2CB-W	NITRA pneumatic manifold, aluminum, rectangular, (2) 1/4 inch female NPT inlet port(s), 2 stations, (1) 1/8 inch female NPT outlet port(s) per station, wide hole spacing.	3.25 [82.6]	1.50 [38.1]	1	0.3	\$:,10,v
MRA-3CB	NITRA pneumatic manifold, aluminum, rectangular, (2) 1/4 inch female NPT inlet port(s), 3 stations, (1) 1/8 inch female NPT outlet port(s) per station, standard hole spacing.	2.50 [63.5]	0.75 [19.1]	1	0.2	\$:,10,x
MRA-3CB-90	NITRA pneumatic manifold, aluminum, rectangular, (2) 1/4 inch female NPT inlet port(s), 3 stations, (2) 1/8 inch female NPT outlet port(s) per station, 90-degree orientation, standard hole spacing.	2.50 [63.5]	0.75 [19.1]	1	0.2	\$:,10,y
MRA-3CB-W	NITRA pneumatic manifold, aluminum, rectangular, (2) 1/4 inch female NPT inlet port(s), 3 stations, (1) 1/8 inch female NPT outlet port(s) per station, wide hole spacing.	4.75 [120.7]	1.50 [38.1]	1	0.4	\$:,10,z
MRA-4CB	NITRA pneumatic manifold, aluminum, rectangular, (2) 1/4 inch female NPT inlet port(s), 4 stations, (1) 1/8 inch female NPT outlet port(s) per station, standard hole spacing.	3.25 [82.6]	0.75 [19.1]	1	0.3	\$:,10,]
MRA-4CB-90	NITRA pneumatic manifold, aluminum, rectangular, (2) 1/4 inch female NPT inlet port(s), 4 stations, (2) 1/8 inch female NPT outlet port(s) per station, 90-degree orientation, standard hole spacing.	3.25 [82.6]	0.75 [19.1]	1	0.3	\$:,10,[
MRA-4CB-W	NITRA pneumatic manifold, aluminum, rectangular, (2) 1/4 inch female NPT inlet port(s), 4 stations, (1) 1/8 inch female NPT outlet port(s) per station, wide hole spacing.	6.25 [158.8]	1.50 [38.1]	1	0.5	\$:,10, _
MRA-5CB	NITRA pneumatic manifold, aluminum, rectangular, (2) 1/4 inch female NPT inlet port(s), 5 stations, (1) 1/8 inch female NPT outlet port(s) per station, standard hole spacing.	4.00 [101.6]	0.75 [19.1]	1	0.3	\$:,10,#
MRA-5CB-90	NITRA pneumatic manifold, aluminum, rectangular, (2) 1/4 inch female NPT inlet port(s), 5 stations, (2) 1/8 inch female NPT outlet port(s) per station, 90-degree orientation, standard hole spacing.	4.00 [101.6]	0.75 [19.1]	1	0.3	\$:,10,!:
MRA-5CB-W	NITRA pneumatic manifold, aluminum, rectangular, (2) 1/4 inch female NPT inlet port(s), 5 stations, (1) 1/8 inch female NPT outlet port(s) per station, wide hole spacing.	7.75 [196.9]	1.50 [38.1]	1	0.6	\$:,10,?:
MRA-6CB	NITRA pneumatic manifold, aluminum, rectangular, (2) 1/4 inch female NPT inlet port(s), 6 stations, (1) 1/8 inch female NPT outlet port(s) per station, standard hole spacing.	4.75 [120.7]	0.75 [19.1]	1	0.4	\$:,10,,:
MRA-6CB-90	NITRA pneumatic manifold, aluminum, rectangular, (2) 1/4 inch female NPT inlet port(s), 6 stations, (2) 1/8 inch female NPT outlet port(s) per station, 90-degree orientation, standard hole spacing.	4.75 [120.7]	0.75 [19.1]	1	0.4	\$1100:
MRA-6CB-W	NITRA pneumatic manifold, aluminum, rectangular, (2) 1/4 inch female NPT inlet port(s), 6 stations, (1) 1/8 inch female NPT outlet port(s) per station, wide hole spacing.	9.25 [235.0]	1.50 [38.1]	1	0.7	\$1101:
MRA-7CB	NITRA pneumatic manifold, aluminum, rectangular, (2) 1/4 inch female NPT inlet port(s), 7 stations, (1) 1/8 inch female NPT outlet port(s) per station, standard hole spacing.	5.50 [139.0]	0.75 [19.1]	1	0.5	\$1102:
MRA-8CB	NITRA pneumatic manifold, aluminum, rectangular, (2) 1/4 inch female NPT inlet port(s), 8 stations, (1) 1/8 inch female NPT outlet port(s) per station, standard hole spacing.	6.25 [158.8]	0.75 [19.1]	1	0.5	\$1103:
MRA-8CB-90	NITRA pneumatic manifold, aluminum, rectangular, (2) 1/4 inch female NPT inlet port(s), 8 stations, (2) 1/8 inch female NPT outlet port(s) per station, 90-degree orientation, standard hole spacing.	6.25 [158.8]	0.75 [19.1]	1	0.5	\$1104:
MRA-8CB-W	NITRA pneumatic manifold, aluminum, rectangular, (2) 1/4 inch female NPT inlet port(s), 8 stations, (1) 1/8 inch female NPT outlet port(s) per station, wide hole spacing.	12.25 [311.2]	1.50 [38.1]	1	1.0	\$1105:
MRA-10CB	NITRA pneumatic manifold, aluminum, rectangular, (2) 1/4 inch female NPT inlet port(s), 10 stations, (1) 1/8 inch female NPT outlet port(s) per station, standard hole spacing.	7.75 [196.9]	0.75 [19.1]	1	0.6	\$1106:

Dimensions

inches [mm]



See our website www.AutomationDirect.com for complete Engineering drawings.



3/8" NPT Aluminum Manifolds

**MRA-2DC****MRA-2DC-90****MRA-2DC-W**

NITRA aluminum manifolds

- Black anodized finish
- Maximum input pressure of 1000 psi
- Made in the USA

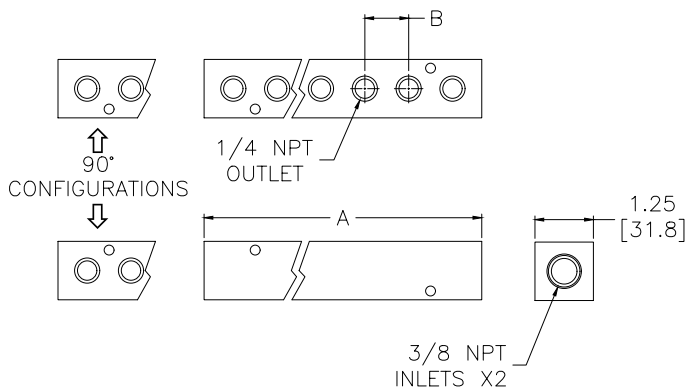


NITRA 3/8" NPT Aluminum Manifolds

Part No.	Description	A	B	Parts Per Pkg	Weight (lbs)	Price
MRA-2DC	NITRA pneumatic manifold, aluminum, rectangular, (2) 3/8 inch female NPT inlet port(s), 2 stations, (1) 1/4 inch female NPT outlet port(s) per station, standard hole spacing.	2.13 [54.1]	0.88 [22.4]	1	0.2	\$1107:
MRA-2DC-90	NITRA pneumatic manifold, aluminum, rectangular, (2) 3/8 inch female NPT inlet port(s), 2 stations, (2) 1/4 inch female NPT outlet port(s) per station, 90-degree orientation, standard hole spacing.	2.13 [54.1]	0.88 [22.4]	1	0.3	\$1108:
MRA-2DC-W	NITRA pneumatic manifold, aluminum, rectangular, (2) 3/8 inch female NPT inlet port(s), 2 stations, (1) 1/4 inch female NPT outlet port(s) per station, wide hole spacing.	3.25 [82.1]	1.50 [38.1]	1	0.4	\$1109:
MRA-3DC	NITRA pneumatic manifold, aluminum, rectangular, (2) 3/8 inch female NPT inlet port(s), 3 stations, (1) 1/4 inch female NPT outlet port(s) per station, standard hole spacing.	3.00 [76.2]	0.88 [22.4]	1	0.3	\$110a:
MRA-3DC-90	NITRA pneumatic manifold, aluminum, rectangular, (2) 3/8 inch female NPT inlet port(s), 3 stations, (2) 1/4 inch female NPT outlet port(s) per station, 90-degree orientation, standard hole spacing.	3.00 [76.2]	0.88 [22.4]	1	0.3	\$110b:
MRA-3DC-W	NITRA pneumatic manifold, aluminum, rectangular, (2) 3/8 inch female NPT inlet port(s), 3 stations, (1) 1/4 inch female NPT outlet port(s) per station, wide hole spacing.	4.75 [120.7]	1.50 [38.1]	1	0.6	\$110c:
MRA-4DC	NITRA pneumatic manifold, aluminum, rectangular, (2) 3/8 inch female NPT inlet port(s), 4 stations, (1) 1/4 inch female NPT outlet port(s) per station, standard hole spacing.	3.88 [98.6]	0.88 [22.4]	1	0.5	\$110d:
MRA-4DC-90	NITRA pneumatic manifold, aluminum, rectangular, (2) 3/8 inch female NPT inlet port(s), 4 stations, (2) 1/4 inch female NPT outlet port(s) per station, 90-degree orientation, standard hole spacing.	3.88 [98.6]	0.88 [22.4]	1	0.4	\$110e:
MRA-4DC-W	NITRA pneumatic manifold, aluminum, rectangular, (2) 3/8 inch female NPT inlet port(s), 4 stations, (1) 1/4 inch female NPT outlet port(s) per station, wide hole spacing.	6.25 [158.8]	1.50 [38.1]	1	0.8	\$110f:
MRA-5DC	NITRA pneumatic manifold, aluminum, rectangular, (2) 3/8 inch female NPT inlet port(s), 5 stations, (1) 1/4 inch female NPT outlet port(s) per station, standard hole spacing.	4.75 [120.7]	0.88 [22.4]	1	0.6	\$110g:
MRA-5DC-90	NITRA pneumatic manifold, aluminum, rectangular, (2) 3/8 inch female NPT inlet port(s), 5 stations, (2) 1/4 inch female NPT outlet port(s) per station, 90-degree orientation, standard hole spacing.	4.75 [120.7]	0.88 [22.4]	1	0.6	\$110h:
MRA-5DC-W	NITRA pneumatic manifold, aluminum, rectangular, (2) 3/8 inch female NPT inlet port(s), 5 stations, (1) 1/4 inch female NPT outlet port(s) per station, wide hole spacing.	7.75 [196.9]	1.50 [38.1]	1	1.0	\$110i:
MRA-6DC	NITRA pneumatic manifold, aluminum, rectangular, (2) 3/8 inch female NPT inlet port(s), 6 stations, (1) 1/4 inch female NPT outlet port(s) per station, standard hole spacing.	5.63 [143.0]	0.88 [22.4]	1	0.7	\$110j:
MRA-6DC-90	NITRA pneumatic manifold, aluminum, rectangular, (2) 3/8 inch female NPT inlet port(s), 6 stations, (2) 1/4 inch female NPT outlet port(s) per station, 90-degree orientation, standard hole spacing.	5.63 [143.0]	0.88 [22.4]	1	0.7	\$110k:
MRA-6DC-W	NITRA pneumatic manifold, aluminum, rectangular, (2) 3/8 inch female NPT inlet port(s), 6 stations, (1) 1/4 inch female NPT outlet port(s) per station, wide hole spacing.	9.25 [235.0]	1.50 [38.1]	1	1.1	\$110l:
MRA-7DC	NITRA pneumatic manifold, aluminum, rectangular, (2) 3/8 inch female NPT inlet port(s), 7 stations, (1) 1/4 inch female NPT outlet port(s) per station, standard hole spacing.	6.50 [165.1]	0.88 [22.4]	1	0.8	\$110n:
MRA-8DC	NITRA pneumatic manifold, aluminum, rectangular, (2) 3/8 inch female NPT inlet port(s), 8 stations, (1) 1/4 inch female NPT outlet port(s) per station, standard hole spacing.	7.38 [187.5]	0.88 [22.4]	1	0.9	\$110o:
MRA-8DC-90	NITRA pneumatic manifold, aluminum, rectangular, (2) 3/8 inch female NPT inlet port(s), 8 stations, (2) 1/4 inch female NPT outlet port(s) per station, 90-degree orientation, standard hole spacing.	7.38 [187.5]	0.88 [22.4]	1	0.9	\$110p:
MRA-8DC-W	NITRA pneumatic manifold, aluminum, rectangular, (2) 3/8 inch female NPT inlet port(s), 8 stations, (1) 1/4 inch female NPT outlet port(s) per station, wide hole spacing.	12.25 [311.2]	1.50 [38.1]	1	1.5	\$110q:
MRA-10DC	NITRA pneumatic manifold, aluminum, rectangular, (2) 3/8 inch female NPT inlet port(s), 10 stations, (1) 1/4 inch female NPT outlet port(s) per station, standard hole spacing.	9.13 [231.9]	0.88 [22.4]	1	1.1	\$110s:
MRA-10DC-90	NITRA pneumatic manifold, aluminum, rectangular, (2) 3/8 inch female NPT inlet port(s), 10 stations, (2) 1/4 inch female NPT outlet port(s) per station, 90-degree orientation, standard hole spacing.	9.13 [231.9]	0.88 [22.4]	1	0.9	\$110t:
MRA-10DC-W	NITRA pneumatic manifold, aluminum, rectangular, (2) 3/8 inch female NPT inlet port(s), 10 stations, (1) 1/4 inch female NPT outlet port(s) per station, wide hole spacing.	15.25 [387.4]	1.50 [38.1]	1	1.9	\$110u:

Dimensions

inches [mm]



See our website www.AutomationDirect.com for complete Engineering drawings.



1/2" NPT Aluminum Manifolds

**MRA-2ED****MRA-2ED-90****MRA-2ED-W**

NITRA aluminum manifolds

- Black anodized finish
- Maximum input pressure of 1000 psi
- Made in the USA

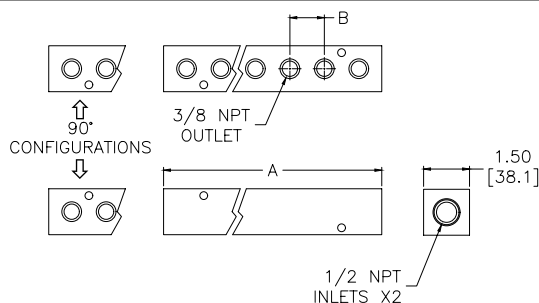


NITRA 1/2" NPT Aluminum Manifolds

Part No.	Description	A	B	Parts Per Pkg	Weight (lbs)	Price
MRA-2ED	NITRA pneumatic manifold, aluminum, rectangular, (2) 1/2 inch female NPT inlet port(s), 2 stations, (1) 3/8 inch female NPT outlet port(s) per station, standard hole spacing.	2.75 [69.9]	1.00 [25.4]	1	0.4	\$110v:
MRA-2ED-90	NITRA pneumatic manifold, aluminum, rectangular, (2) 1/2 inch female NPT inlet port(s), 2 stations, (2) 3/8 inch female NPT outlet port(s) per station, 90-degree orientation, standard hole spacing.	2.75 [69.9]	1.00 [25.4]	1	0.4	\$110x:
MRA-2ED-W	NITRA pneumatic manifold, aluminum, rectangular, (2) 1/2 inch female NPT inlet port(s), 2 stations, (1) 3/8 inch female NPT outlet port(s) per station, wide hole spacing.	3.25 [82.6]	1.50 [38.1]	1	0.6	\$110y:
MRA-3ED	NITRA pneumatic manifold, aluminum, rectangular, (2) 1/2 inch female NPT inlet port(s), 3 stations, (1) 3/8 inch female NPT outlet port(s) per station, standard hole spacing.	3.75 [95.3]	1.00 [25.4]	1	0.6	\$110z:
MRA-3ED-90	NITRA pneumatic manifold, aluminum, rectangular, (2) 1/2 inch female NPT inlet port(s), 3 stations, (2) 3/8 inch female NPT outlet port(s) per station, 90-degree orientation, standard hole spacing.	3.75 [95.3]	1.00 [25.4]	1	0.6	\$;110]:
MRA-3ED-W	NITRA pneumatic manifold, aluminum, rectangular, (2) 1/2 inch female NPT inlet port(s), 3 stations, (1) 3/8 inch female NPT outlet port(s) per station, wide hole spacing.	4.75 [120.7]	1.50 [38.1]	1	0.8	\$;110[:
MRA-4ED	NITRA pneumatic manifold, aluminum, rectangular, (2) 1/2 inch female NPT inlet port(s), 4 stations, (1) 3/8 inch female NPT outlet port(s) per station, standard hole spacing.	4.75 [120.7]	1.00 [25.4]	1	0.8	\$110_:
MRA-4ED-90	NITRA pneumatic manifold, aluminum, rectangular, (2) 1/2 inch female NPT inlet port(s), 4 stations, (2) 3/8 inch female NPT outlet port(s) per station, 90-degree orientation, standard hole spacing.	4.75 [120.7]	1.00 [25.4]	1	0.7	\$110#:
MRA-4ED-W	NITRA pneumatic manifold, aluminum, rectangular, (2) 1/2 inch female NPT inlet port(s), 4 stations, (1) 3/8 inch female NPT outlet port(s) per station, wide hole spacing.	6.25 [158.8]	1.50 [38.1]	1	1.1	\$;110!:
MRA-5ED	NITRA pneumatic manifold, aluminum, rectangular, (2) 1/2 inch female NPT inlet port(s), 5 stations, (1) 3/8 inch female NPT outlet port(s) per station, standard hole spacing.	5.75 [146.1]	1.00 [25.4]	1	1.0	\$110?:
MRA-5ED-90	NITRA pneumatic manifold, aluminum, rectangular, (2) 1/2 inch female NPT inlet port(s), 5 stations, (2) 3/8 inch female NPT outlet port(s) per station, 90-degree orientation, standard hole spacing.	5.75 [146.1]	1.00 [25.4]	1	0.9	\$;110,::
MRA-5ED-W	NITRA pneumatic manifold, aluminum, rectangular, (2) 1/2 inch female NPT inlet port(s), 5 stations, (1) 3/8 inch female NPT outlet port(s) per station, wide hole spacing.	7.75 [196.9]	1.50 [38.1]	1	1.3	\$1110:
MRA-6ED	NITRA pneumatic manifold, aluminum, rectangular, (2) 1/2 inch female NPT inlet port(s), 6 stations, (1) 3/8 inch female NPT outlet port(s) per station, standard hole spacing.	6.75 [171.5]	1.00 [25.4]	1	1.1	\$1111:
MRA-6ED-90	NITRA pneumatic manifold, aluminum, rectangular, (2) 1/2 inch female NPT inlet port(s), 6 stations, (2) 3/8 inch female NPT outlet port(s) per station, 90-degree orientation, standard hole spacing.	6.75 [171.5]	1.00 [25.4]	1	1.1	\$1112:
MRA-6ED-W	NITRA pneumatic manifold, aluminum, rectangular, (2) 1/2 inch female NPT inlet port(s), 6 stations, (1) 3/8 inch female NPT outlet port(s) per station, wide hole spacing.	9.25 [235.0]	1.50 [38.1]	1	1.6	\$1113:
MRA-7ED	NITRA pneumatic manifold, aluminum, rectangular, (2) 1/2 inch female NPT inlet port(s), 7 stations, (1) 3/8 inch female NPT outlet port(s) per station, standard hole spacing.	7.75 [196.9]	1.00 [25.4]	1	1.3	\$1114:
MRA-8ED	NITRA pneumatic manifold, aluminum, rectangular, (2) 1/2 inch female NPT inlet port(s), 8 stations, (1) 3/8 inch female NPT outlet port(s) per station, standard hole spacing.	8.75 [222.3]	1.00 [25.4]	1	1.5	\$1115:
MRA-8ED-90	NITRA pneumatic manifold, aluminum, rectangular, (2) 1/2 inch female NPT inlet port(s), 8 stations, (2) 3/8 inch female NPT outlet port(s) per station, 90-degree orientation, standard hole spacing.	8.75 [222.3]	1.00 [25.4]	1	1.4	\$1116:
MRA-8ED-W	NITRA pneumatic manifold, aluminum, rectangular, (2) 1/2 inch female NPT inlet port(s), 8 stations, (1) 3/8 inch female NPT outlet port(s) per station, wide hole spacing.	12.25 [311.2]	1.50 [38.1]	1	2.1	\$1117:
MRA-9ED	NITRA pneumatic manifold, aluminum, rectangular, (2) 1/2 inch female NPT inlet port(s), 9 stations, (1) 3/8 inch female NPT outlet port(s) per station, standard hole spacing.	9.75 [247.7]	1.00 [25.4]	1	1.6	\$1118:
MRA-10ED	NITRA pneumatic manifold, aluminum, rectangular, (2) 1/2 inch female NPT inlet port(s), 10 stations, (1) 3/8 inch female NPT outlet port(s) per station, standard hole spacing.	10.75 [273.1]	1.00 [25.4]	1	1.8	\$1119:
MRA-10ED-90	NITRA pneumatic manifold, aluminum, rectangular, (2) 1/2 inch female NPT inlet port(s), 10 stations, (2) 3/8 inch female NPT outlet port(s) per station, 90-degree orientation, standard hole spacing.	10.75 [273.1]	1.00 [25.4]	1	1.7	\$111a:

Dimensions

inches [mm]



See our website www.AutomationDirect.com for complete Engineering drawings.



3/4" NPT Aluminum Manifolds

**MRA-2FD****NITRA** aluminum manifolds

- Black anodized finish
- Maximum input pressure of 1000 psi
- Made in the USA

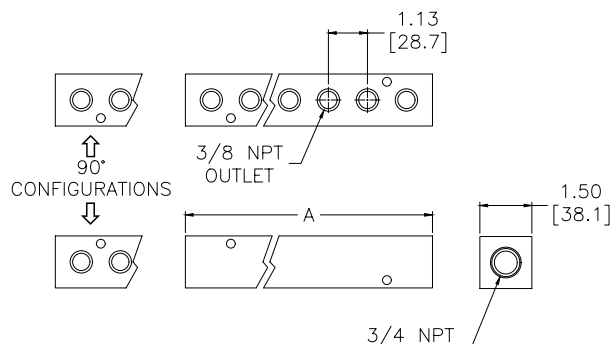


NITRA 3/4" NPT Aluminum Manifolds

Part No.	Description	A	Parts Per Pkg	Weight (lbs)	Price
<u>MRA-2FD</u>	NITRA pneumatic manifold, aluminum, rectangular, (2) 3/4 inch female NPT inlet port(s), 2 stations, (1) 3/8 inch female NPT outlet port(s) per station, standard hole spacing.	4.63 [117.6]	1	0.8	\$111b:
<u>MRA-3FD</u>	NITRA pneumatic manifold, aluminum, rectangular, (2) 3/4 inch female NPT inlet port(s), 3 stations, (1) 3/8 inch female NPT outlet port(s) per station, standard hole spacing.	5.75 [146.1]	1	0.9	\$111c:
<u>MRA-4FD</u>	NITRA pneumatic manifold, aluminum, rectangular, (2) 3/4 inch female NPT inlet port(s), 4 stations, (1) 3/8 inch female NPT outlet port(s) per station, standard hole spacing.	6.88 [174.8]	1	1.1	\$111d:
<u>MRA-5FD</u>	NITRA pneumatic manifold, aluminum, rectangular, (2) 3/4 inch female NPT inlet port(s), 5 stations, (1) 3/8 inch female NPT outlet port(s) per station, standard hole spacing.	8.00 [203.2]	1	1.3	\$111e:
<u>MRA-6FD</u>	NITRA pneumatic manifold, aluminum, rectangular, (2) 3/4 inch female NPT inlet port(s), 6 stations, (1) 3/8 inch female NPT outlet port(s) per station, standard hole spacing.	9.13 [231.9]	1	1.5	\$111f:
<u>MRA-8FD</u>	NITRA pneumatic manifold, aluminum, rectangular, (2) 3/4 inch female NPT inlet port(s), 8 stations, (1) 3/8 inch female NPT outlet port(s) per station, standard hole spacing.	11.38 [289.1]	1	1.9	\$111g:
<u>MRA-10FD</u>	NITRA pneumatic manifold, aluminum, rectangular, (2) 3/4 inch female NPT inlet port(s), 10 stations, (1) 3/8 inch female NPT outlet port(s) per station, standard hole spacing.	13.63 [346.2]	1	2.2	\$111h:

Dimensions

inches [mm]

See our website www.AutomationDirect.com for complete Engineering drawings.



1" NPT Aluminum Manifolds

**MRA-2GE****MRA-2GE-90**

NITRA aluminum manifolds

- Plain finish
- Maximum input pressure of 1000 psi
- Made in the USA

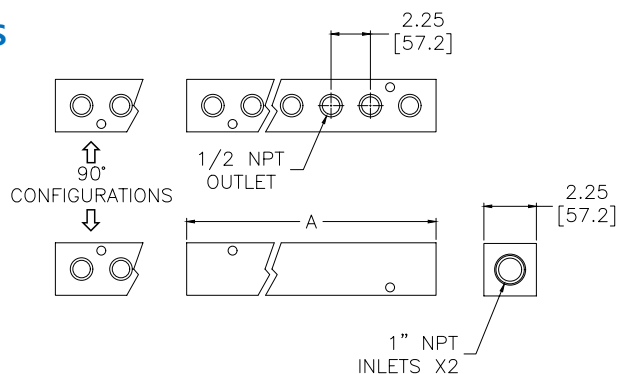


NITRA 1" NPT Aluminum Manifolds

Part No.	Description	A	Parts Per Pkg	Weight (lbs)	Price
<u>MRA-2GE</u>	NITRA pneumatic manifold, aluminum, rectangular, (2) 1 inch female NPT inlet port(s), 2 stations, (1) 1/2 inch female NPT outlet port(s) per station, standard hole spacing.	5.25 [133.4]	1	2.0	\$-111i:
<u>MRA-2GE-90</u>	NITRA pneumatic manifold, aluminum, rectangular, (2) 1 inch female NPT inlet port(s), 2 stations, (2) 1/2 inch female NPT outlet port(s) per station, 90-degree orientation, standard hole spacing.	5.25 [133.4]	1	1.9	\$-111j:
<u>MRA-3GE</u>	NITRA pneumatic manifold, aluminum, rectangular, (2) 1 inch female NPT inlet port(s), 3 stations, (1) 1/2 inch female NPT outlet port(s) per station, standard hole spacing.	7.50 [190.5]	1	2.8	\$111k:
<u>MRA-3GE-90</u>	NITRA pneumatic manifold, aluminum, rectangular, (2) 1 inch female NPT inlet port(s), 3 stations, (2) 1/2 inch female NPT outlet port(s) per station, 90-degree orientation, standard hole spacing.	7.50 [190.5]	1	2.7	\$-111l:
<u>MRA-4GE</u>	NITRA pneumatic manifold, aluminum, rectangular, (2) 1 inch female NPT inlet port(s), 4 stations, (1) 1/2 inch female NPT outlet port(s) per station, standard hole spacing.	9.75 [247.7]	1	3.7	\$111n:
<u>MRA-4GE-90</u>	NITRA pneumatic manifold, aluminum, rectangular, (2) 1 inch female NPT inlet port(s), 4 stations, (2) 1/2 inch female NPT outlet port(s) per station, 90-degree orientation, standard hole spacing.	9.75 [247.7]	1	3.6	\$0111o:
<u>MRA-5GE</u>	NITRA pneumatic manifold, aluminum, rectangular, (2) 1 inch female NPT inlet port(s), 5 stations, (1) 1/2 inch female NPT outlet port(s) per station, standard hole spacing.	12.00 [304.8]	1	4.6	\$0111p:
<u>MRA-5GE-90</u>	NITRA pneumatic manifold, aluminum, rectangular, (2) 1 inch female NPT inlet port(s), 5 stations, (2) 1/2 inch female NPT outlet port(s) per station, 90-degree orientation, standard hole spacing.	12.00 [304.8]	1	4.4	\$0111q:
<u>MRA-6GE</u>	NITRA pneumatic manifold, aluminum, rectangular, (2) 1 inch female NPT inlet port(s), 6 stations, (1) 1/2 inch female NPT outlet port(s) per station, standard hole spacing.	14.25 [362.0]	1	5.4	\$0111s:
<u>MRA-6GE-90</u>	NITRA pneumatic manifold, aluminum, rectangular, (2) 1 inch female NPT inlet port(s), 6 stations, (2) 1/2 inch female NPT outlet port(s) per station, 90-degree orientation, standard hole spacing.	14.25 [362.0]	1	5.3	\$,0111t:
<u>MRA-7GE</u>	NITRA pneumatic manifold, aluminum, rectangular, (2) 1 inch female NPT inlet port(s), 7 stations, (1) 1/2 inch female NPT outlet port(s) per station, standard hole spacing.	16.50 [419.1]	1	6.3	\$0111u:
<u>MRA-7GE-90</u>	NITRA pneumatic manifold, aluminum, rectangular, (2) 1 inch female NPT inlet port(s), 7 stations, (2) 1/2 inch female NPT outlet port(s) per station, 90-degree orientation, standard hole spacing.	16.50 [419.0]	1	6.1	\$0111v:
<u>MRA-8GE</u>	NITRA pneumatic manifold, aluminum, rectangular, (2) 1 inch female NPT inlet port(s), 8 stations, (1) 1/2 inch female NPT outlet port(s) per station, standard hole spacing.	18.75 [476.3]	1	7.2	\$0111x:
<u>MRA-8GE-90</u>	NITRA pneumatic manifold, aluminum, rectangular, (2) 1 inch female NPT inlet port(s), 8 stations, (2) 1/2 inch female NPT outlet port(s) per station, 90-degree orientation, standard hole spacing.	18.75 [476.3]	1	6.9	\$0111y:

Dimensions

inches [mm]



See our website www.AutomationDirect.com for complete Engineering drawings.