

# PFT Series IP69K-rated Proximity Sensors



**PFT1-AP-3H**  
**PFT1-AP-4H**

## 30 mm Stainless Steel - DC

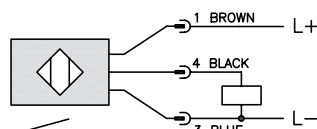
- PFT1 series – short-body length, PFT2 series – regular body length
- 30 mm diameter
- 316L stainless steel housing
- M12 quick-disconnect plug with gold-plated pins (purchase cable separately)
- Complete overload protection
- IP69K rated for food and beverage applications
- M30 mounting hex nuts included
- Lifetime warranty



| PFT Series Food and Beverage DC Inductive Proximity Selection Chart |          |                               |           |              |       |                      |           |            |
|---|----------|-------------------------------|-----------|--------------|-------|----------------------|-----------|------------|
| Part Number   | Price    | Sensing Range                 | Mounting  | Output State | Logic | Connection           | Wiring    | Dimensions |
| <b><u>PFT1-AP-3H</u></b>  | \$-09el: | 0 to 14 mm<br>[0 to 0.551 in] | Flush     | N.O.         | PNP   | M12 [12mm] connector | Diagram 1 | Figure 1   |
| <b><u>PFT2-AP-3H</u></b>  | Retired  | 0 to 15 mm<br>[0 to 0.590 in] |           |              | PNP   | M12 [12mm] connector | Diagram 1 | Figure 2   |
| <b><u>PFT1-AP-4H</u></b>  | \$09en:  | 0 to 22 mm<br>[0 to 0.866 in] | Non-flush | N.O.         | PNP   | M12 [12mm] connector | Diagram 1 | Figure 1   |
| <b><u>PFT2-AP-4H</u></b>  | \$09ep:  |                               |           |              | PNP   | M12 [12mm] connector | Diagram 1 | Figure 2   |

## Wiring Diagram

**Diagram 1**  
**PNP output**



**Connector**  
**M12 connector**



*Note: Class 2 power supply required*

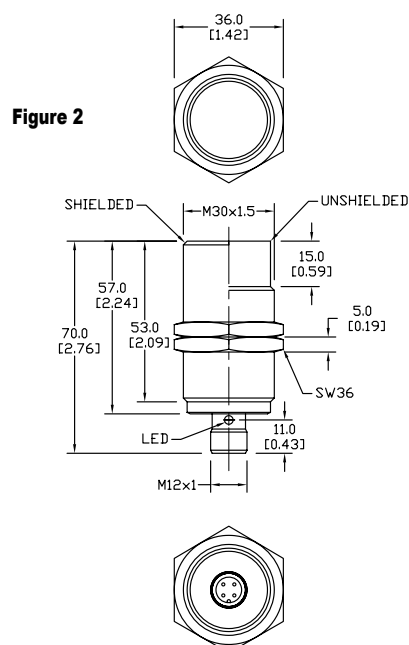
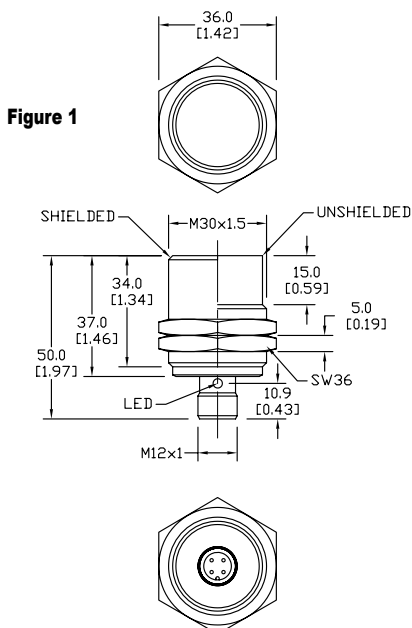
# PFT Series IP69K-rated Proximity Sensors

| PFT Series Food and Beverage DC Inductive Proximity Specifications |  |                 |                 |                |
|--|--|-----------------|-----------------|----------------|
| Mounting Type  | Flush  |                 | Non-flush       |                |
| Series   | PFT1   | PFT2            | PFT1            | PFT2           |
| Nominal Sensing Distance   | 14mm [0.551 in]                                    | 15mm [0.590 in] | 22mm [0.866 in] |                |
| Operating Distance   | NA   |                 |                 |                |
| Material Correction Factors  | See the <a href="#">Material influence table</a>   |                 |                 |                |
| Output Type  | PNP, N.O. only                                     |                 |                 |                |
| Operating Voltage  | 10 - 36 VDC  |                 |                 |                |
| No-load Supply Current   | ≤ 10mA   |                 |                 |                |
| Operating (Load) Current   | ≤ 100mA  |                 |                 |                |
| Off-state (Leakage) Current  | NA   |                 |                 |                |
| Voltage Drop   | ≤ 2.5 V  |                 |                 |                |
| Switching Frequency  | 50Hz   |                 | 100Hz           |                |
| Differential Travel (% of Nominal Distance)                        | 3 - 15%  |                 |                 |                |
| Repeat Accuracy  | 10%  |                 |                 |                |
| Ripple   | NA   |                 |                 |                |
| Time Delay Before Availability (tv)                                | 30ms   |                 |                 |                |
| Reverse Polarity Protection  | Yes  |                 |                 |                |
| Short-Circuit Protection   | Yes (switch auto-resets after overload is removed) |                 |                 |                |
| Operating Temperature  | 0 to 100°C [32 to 212°F]                           |                 |                 |                |
| Protection Degree (DIN 40050)                                      | IEC IP68, IP69K                                    |                 |                 |                |
| Indication/Switch Status   | Normally Open output energized - Yellow            |                 |                 |                |
| Housing Material   | 316 L stainless steel                              |                 |                 |                |
| Sensing Face Material  | PEEK (Polyether Ether Ketone)                      |                 |                 |                |
| Shock/Vibration  | See <a href="#">Proximity Sensor Terminology</a>   |                 |                 |                |
| Tightening Torque  | 80 Nm [59 lb-ft]                                   |                 |                 |                |
| Weight   | 110g [3.88 oz]                                     | 130g [4.58 oz]  | 107g [3.77 oz]  | 124g [4.37 oz] |
| Connection   | M12 plug with gold-plated pins                     |                 |                 |                |
| Agency Approvals   | UL file E328811, CE ECOLAB, RoHS                   |                 |                 |                |

To obtain the most current agency approval information, see the Agency Approval Checklist section on the specific part number's web page.

## Dimensions

mm [inches]



# Accessories for 30mm Sensors

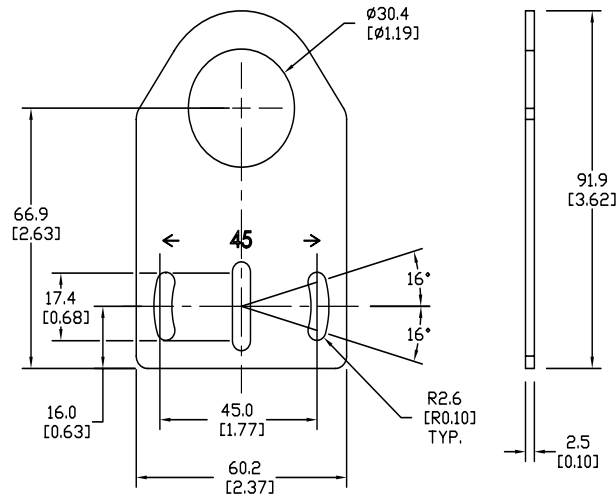
## Axial Mounting Bracket

Mounting bracket, axial, zinc-plated steel. For use with 30mm sensors. Has two mounting holes (use 5mm screws) and allows the rotation of an optical axis for right-beam-angle-adaptor sensors. Hexagonal nuts not included.

| Accessories for 30mm Sensors |        |  |               |
|------------------------------|--------|--|---------------|
| Part Number                  | Price  | Description  | Weight lb [g] |
| <b>ST30A</b>                 | \$983: | Micro Detectors mounting bracket, axial, zinc plated steel. For use with 30mm sensors. | 0.18 [81.7]   |

### Dimensions

mm [inches]



**ST30A**

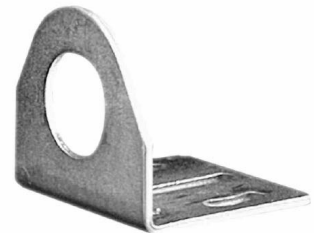
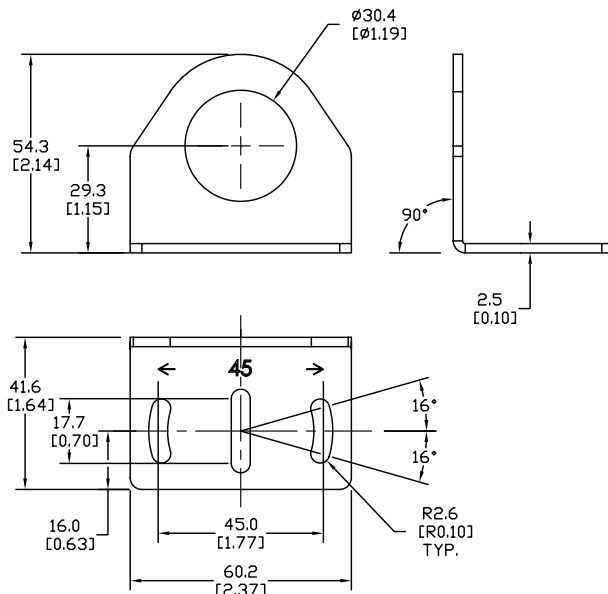
## Right-angle Mounting Bracket

Mounting bracket, right-angle, zinc-plated steel. For use with 30mm sensors. Has two mounting holes (use 5mm screws) and allows the rotation of an optical axis for axial sensors. Hexagonal nuts not included.

| Accessories for 30mm Sensors |        |  |               |
|------------------------------|--------|--|---------------|
| Part Number                  | Price  | Description  | Weight lb [g] |
| <b>ST30C</b>                 | \$984: | Micro Detectors mounting bracket, right-angle, zinc plated steel. For use with 30mm sensors. | 0.18 [81.7]   |

### Dimensions

mm [inches]



**ST30C**

# Accessories for 30mm Sensors

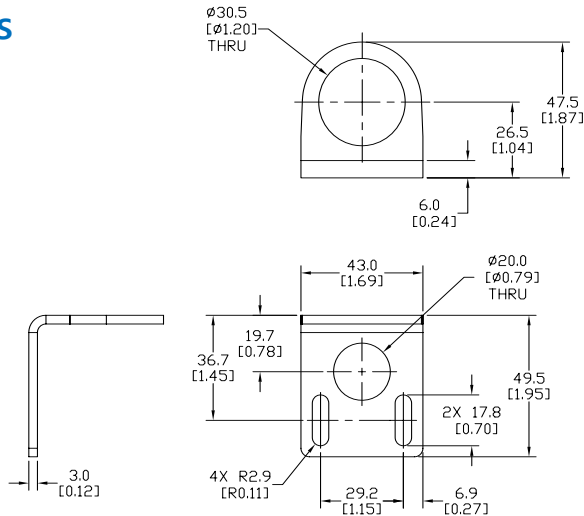
## Right-angle Mounting Bracket

Mounting bracket, right-angle, 304 stainless steel. For use with 30mm sensors.

| Accessories for FW Series Sensors |        |   |                |
|-----------------------------------|--------|---|----------------|
| Part Number                       | Price  | Description   | Weight lb [g]  |
| <b>ST30C6W</b>                    | \$-51: | AutomationDirect mounting bracket, right-angle, 304 stainless steel. For use with 30mm sensors. | 0.15<br>(68.0) |

## Dimensions

mm [inches]



**ST30C6W**

## Right-angle Swivel Mounting Systems

Mounting bracket, right-angle swivel, 360 degree vertical and horizontal adjustment, 12mm rod mount. For use with 30mm sensors. Available in all 304 stainless steel or with an aluminum head with a 304 stainless steel mounting plate.

| Accessories for 30mm Sensors |           |  |                     |                     |                     |                |
|------------------------------|-----------|--|---------------------|---------------------|---------------------|----------------|
| Part Number                  | Price     | Description  | Mounting Head       | Mounting Plate      | Drawing Link        | Weight lb [g]  |
| <b>OPT2118</b>               | \$-1nl?:  | Wenglor mounting bracket, right-angle swivel, 360 degree vertical and horizontal adjustment, aluminum, 12mm rod mount. For use with 30mm sensors.            | Aluminum            | 304 Stainless steel | <a href="#">PDF</a> | 0.18<br>[81.7] |
| <b>OPT2119</b>               | \$;-1nl,: | Wenglor mounting bracket, right-angle swivel, 360 degree vertical and horizontal adjustment, 304 stainless steel, 12mm rod mount. For use with 30mm sensors. | 304 Stainless Steel | 304 Stainless steel | <a href="#">PDF</a> | 0.18<br>[81.7] |

Note: 304 Stainless steel mounting rods sold separately: [OPT2109](#) (200mm [7.87 in] length), [OPT2110](#) (300mm [11.81 in] length), and [OPT2111](#) (500mm [19.69 in] length).



**OPT2118, OPT2119**

# Mounting Rods and Brackets

## Mounting Rods

304 Stainless steel rods for mounting swivel brackets [OPT2112](#) - [OPT2127](#). Available in three lengths: 200mm, 300mm, and 500mm. 12mm diameter.

| Mounting Rods for OPT2112-2127 Swivel Mounting Brackets |         |   |                     |                  |
|---|---------|---|---------------------|------------------|
| Part Number   | Price   | Description   | Drawing Link        | Weight lb (g)    |
| <a href="#">OPT2109</a>                                 | \$1nn9: | Wenglor mounting rod, 12mm diameter, 200mm length, 304 stainless steel. | <a href="#">PDF</a> | 0.41<br>[185.97] |
| <a href="#">OPT2110</a>                                 | \$1nna: | Wenglor mounting rod, 12mm diameter, 300mm length, 304 stainless steel. | <a href="#">PDF</a> | 0.60<br>[272.16] |
| <a href="#">OPT2111</a>                                 | \$1nnb: | Wenglor mounting rod, 12mm diameter, 500mm length, 304 stainless steel. | <a href="#">PDF</a> | 0.98<br>[444.52] |



## Right-angle Mounting Bracket

Mounting bracket, right-angle, nickel-plated brass. For use with 12mm mounting rods [OPT2109](#), [OPT2110](#) & [OPT2111](#).

| Right-angle Mounting Brackets for 12mm Sensors |          |   |                     |                |
|--|----------|---|---------------------|----------------|
| Part Number                                    | Price    | Description   | Drawing Link        | Weight lb [g]  |
| <a href="#">OPT2108</a>                        | \$-1nly: | Wenglor mounting bracket, right-angle, nickel-plated brass. For use with 12mm mounting rods OPT2109, OPT2110 & OPT2111. | <a href="#">PDF</a> | 0.07<br>[31.8] |

