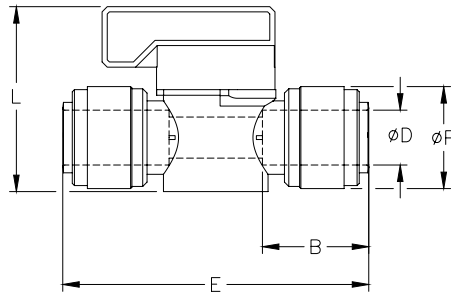




# Potable Water Push-to-Connect Fittings

HydroMode push-to-connect union hand valve fitting with acetel body and synthetic rubber o-ring. For use with polyethylene and other flexible tubing. Five fittings per package.

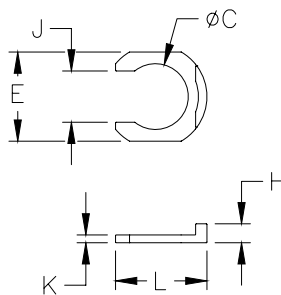


## HydroMode™ Union Hand Valve

*Inch Sizes - dimensions in millimeters (mm) unless otherwise noted*

Part No.	Price	Size (inch)	ØD (inch)	B	ØP	L	E	Package Weight (lbs)	Qty. per pack
<a href="#">HVU14-P</a>	\$,;11[]:	1/4 in. x 1/4 in.	1/4	16.1	15.5	34.5	51.7	0.1	2
<a href="#">HVU516-P</a>	\$,;11[]:	5/16 in. x 5/16 in.	5/16	17.5	17.6	34.5	53.5	0.1	2
<a href="#">HVU38-P</a>	\$,;11[]:	3/8 in. x 3/8 in.	3/8	20.2	20.0	42.3	63.2	0.1	2
<a href="#">HVU12-P</a>	\$,;11[#]:	1/2 in. x 1/2 in.	1/2	23.9	23.0	42.3	70.8	0.2	2

HydroMode push-to-connect polyoxymethylene (acetal) locking clip. For use with HydroMode fittings. Twenty five fittings per package.



## HydroMode™ Locking Clip

*Inch Sizes - dimensions in millimeters (mm) unless otherwise noted*

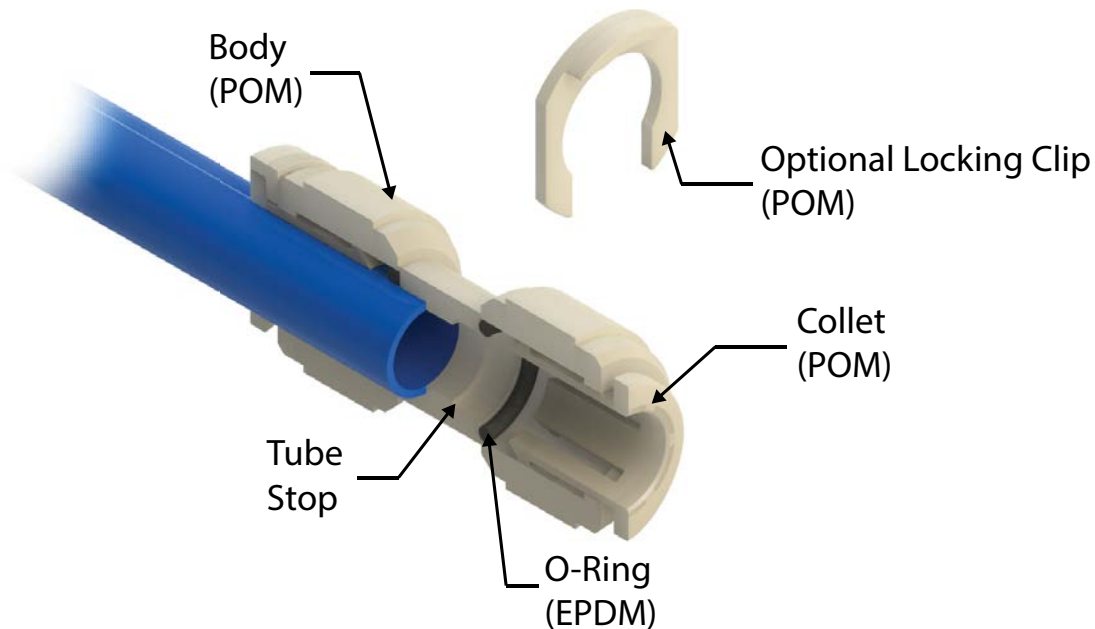
Part No.	Price	Size (inch)	ØD (inch)	ØC	E	L	H	J	K	Package Weight (lbs)	Qty. per pack
<a href="#">LC532-P</a>	\$,;11[]:	5/32 in.	5/32	6.2	10.2	11.0	2.8	4.3	1.1	0.1	25
<a href="#">LC14-P</a>	\$,;11[]:	1/4 in.	1/4	8.0	11.6	11.6	3.1	6.4	1.3	0.1	25
<a href="#">LC516-P</a>	\$,;11[]:	5/16 in.	5/16	9.6	13.5	13.9	3.3	7.3	1.4	0.1	25
<a href="#">LC38-P</a>	\$11_0:	3/8 in.	3/8	11.8	16.0	16.4	3.4	9.2	1.4	0.1	25
<a href="#">LC12-P</a>	\$11_1:	1/2 in.	1/2	14.4	19.0	19.0	3.6	11.1	1.4	0.1	25

# HydroMode™ Potable Water Push-to-Connect Fittings

HydroMode push-to-connect fittings are designed to work with potable water and beverages. Installing or removing flexible tubing is quick and easy. All fittings are made of NSF approved materials with NSF-51® and NSF-61® certifications. The body and collet of the fittings are made from polyoxymethylene (POM) also known as acetal, while the o-rings are made from ethylene propylene diene monomer (EPDM) which is a type of synthetic rubber.

## Features

- Designed for potable water and beverages
- NSF-51 and NSF-61 certified
- Easy tubing installation and removal
- Optional retaining clips prevent accidental tube removal
- Fittings rated for up to 145psi at 70°C (158°F)



*Push-to-Connect Fitting  
Cut-away Diagram*