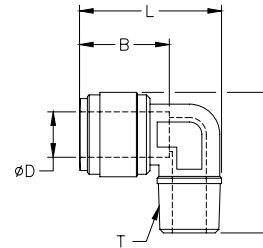
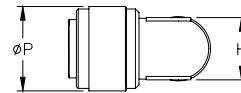


# HydroMode™ Potable Water Push-to-Connect Fittings

HydroMode push-to-connect male elbow fitting with acetel body and synthetic rubber o-ring. For use with polyethylene and other flexible tubing. Five fittings per package.

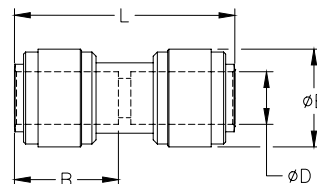


## HydroMode™ Male Elbow

*Inch Sizes - dimensions in millimeters (mm) unless otherwise noted*

Part No.	Price	Size (inch)	ØD (inch)	ØP	T (NPTF)	B	E	H (inch)	L	Package Weight (lbs)	Qty. per pack
<a href="#">ME532-18N-P</a>	\$11z#:	5/32 in. x 1/8 NPT	5/32	15.5	1/8	14.7	26.4	11.0 (7/16)	25.4	0.1	5
<a href="#">ME14-18N-P</a>	\$11z!:	1/4 in. x 1/8 NPT	1/4	15.5	1/8	16.9	26.4	11.0 (7/16)	25.6	0.1	5
<a href="#">ME14-14N-P</a>	\$11z?:	1/4 in. x 1/4 NPT	1/4	15.5	1/4	16.9	31.9	11.0 (7/16)	27.0	0.1	5
<a href="#">ME14-38N-P</a>	\$11z,:	1/4 in. x 3/8 NPT	1/4	15.5	3/8	16.9	32.7	11.0 (7/16)	28.9	0.1	5
<a href="#">ME516-14N-P</a>	\$11j0:	5/16 in. x 1/4 NPT	5/16	20.0	1/4	17.5	35.2	14.3 (9/16)	31.4	0.1	5
<a href="#">ME38-14N-P</a>	\$11j2:	3/8 in. x 1/4 NPT	3/8	20.0	1/4	20.2	35.2	14.3 (9/16)	31.8	0.1	5
<a href="#">ME38-38N-P</a>	\$11j3:	3/8 in. x 3/8 NPT	3/8	20.0	3/8	20.2	35.8	14.3 (9/16)	33.9	0.1	5
<a href="#">ME12-38N-P</a>	\$11j4:	1/2 in. x 3/8 NPT	1/2	23.6	3/8	25.1	39.3	17.4 (11/16)	39.7	0.1	5
<a href="#">ME12-12N-P</a>	\$11j5:	1/2 in. x 1/2 NPT	1/2	23.6	1/2	25.1	43.3	17.4 (11/16)	41.5	0.2	5

HydroMode push-to-connect union straight fitting with acetel body and synthetic rubber o-ring. For use with polyethylene and other flexible tubing. Five fittings per package.



## HydroMode™ Union Straight

*Inch Sizes - dimensions in millimeters (mm) unless otherwise noted*

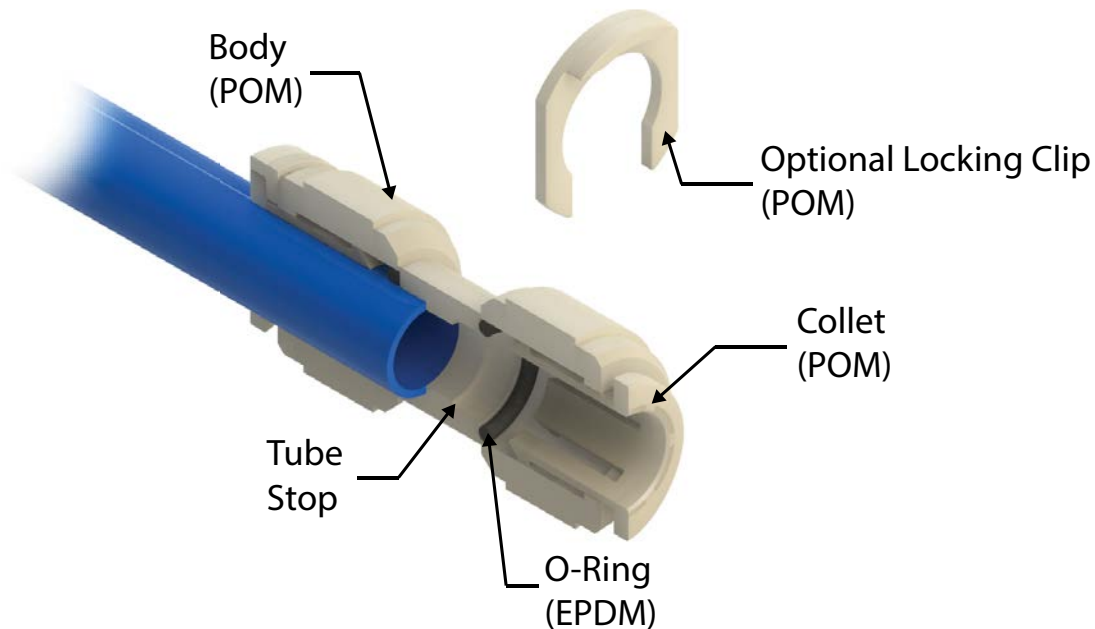
Part No.	Price	Size (inch)	ØD (inch)	B	ØE	L	Package Weight (lbs)	Qty. per pack
<a href="#">US532-P</a>	\$11j6:	5/32 in. x 5/32 in.	5/32	14.7	13.3	31.8	0.1	5
<a href="#">US14-P</a>	\$11j7:	1/4 in. x 1/4 in.	1/4	16.9	15.5	36.2	0.1	5
<a href="#">US516-P</a>	\$11j9:	5/16 in. x 5/16 in.	5/16	17.5	17.6	38.2	0.1	5
<a href="#">US38-P</a>	\$11jc:	3/8 in. x 3/8 in.	3/8	20.2	20.0	42.9	0.1	5
<a href="#">US12-P</a>	\$11jf:	1/2 in. x 1/2 in.	1/2	25.1	23.6	53.2	0.1	5

# HydroMode™ Potable Water Push-to-Connect Fittings

HydroMode push-to-connect fittings are designed to work with potable water and beverages. Installing or removing flexible tubing is quick and easy. All fittings are made of NSF approved materials with NSF-51® and NSF-61® certifications. The body and collet of the fittings are made from polyoxymethylene (POM) also known as acetal, while the o-rings are made from ethylene propylene diene monomer (EPDM) which is a type of synthetic rubber.

## Features

- Designed for potable water and beverages
- NSF-51 and NSF-61 certified
- Easy tubing installation and removal
- Optional retaining clips prevent accidental tube removal
- Fittings rated for up to 145psi at 70°C (158°F)



*Push-to-Connect Fitting  
Cut-away Diagram*