

Enclosure LED Lights

Magnet or Screw Mounted



Magnet mount

Applications

- Suitable for all types of panels and enclosures, especially where space is at a premium
- Suitable for daisy-chaining
- Allows for up to 10 lights to be connected to each other

Features

- Energy saving LED technology
- Available with magnet or screw mounts allowing them to be easily positioned in any enclosure
- Magnet mount has powerful non-slip rubberized magnets and work on ferrous steel only
- Wide voltage range



Listings

- UL File No. E234324
- CE, VDE, EAC



Screw mount

Enclosure LED Lights Specifications

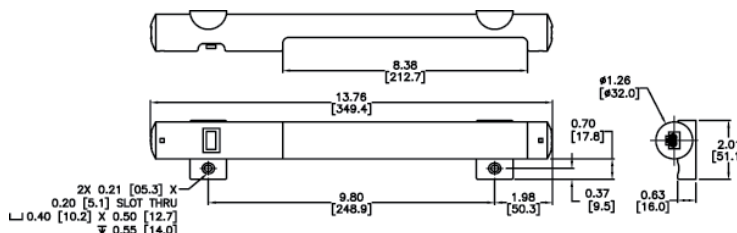
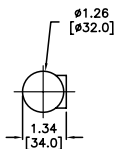
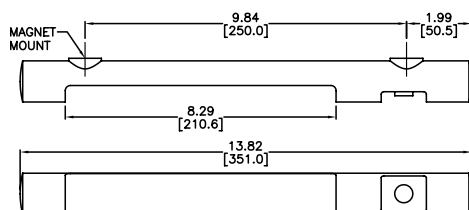
Power Consumption	Max. 5W (~75 W incandescent bulb)
Luminosity	400 Lm at 120° (1,200 Lm at 360° or equivalent 95 W light bulb)
Lamp Type	LED, 120° angle of radiation light color – daylight, color temperature – 6,000 to 7,000 K
Service Life	60,000 hrs. at 68°F [20°C]
Connection	2-pole plug with snap lock (order separately)
Housing	plastic, transparent
Mounting	Magnet or M5 screws (not included), 9.8" (250 mm) centers
Operating / Storage Temperature	-22 to 140°F [-30 to 60°C] / -40 to 185°F [-40 to 85°C]
Operating / Storage Humidity	max. 90% RH (non-condensing)
Protection Class	II (double insulated)
Protection Type	IP20
Approvals	CE, UL Recognized File No.: E234324, VDE, EAC, RoHS 2 compliant

Enclosure LED Lights

Magnet Mount	Price	Screw Mount	Price	Operating Voltage	Switch Type
025400-00	\$00a7n:	025400-01	\$0e98:	100-240 VAC, 50/60 Hz (min. 90 VAC, max. 265 V)	On/Off Switch ²
025401-00	\$00a7o:	025401-01	\$00e99:	24-48 VDC (min. 20 VDC, max. 60 VDC)	
025410-00	\$00a7p:	025410-01	\$00e9a:	100-240 VAC, 50/60 Hz (min. 90 VAC, max. 265 V)	PIR Motion Sensor ^{1,3}
025411-00	\$00a7q:	025411-01	\$00e9b:	24-48 VDC (min. 20 VDC, max. 60 VDC)	

Notes: ¹Passive Infrared (PIR) motion sensor is factory preset to turn the light OFF five minutes after all action ceases.
²Weight: 0.30 lb [135 g]
³Weight: 0.31 lb [140 g]

Dimensions



Enclosure Accessories – LED Light Accessories



Power cable with input connector and wire leads



Part Number	Price	Description	Length	Voltage	Color
244357	\$;04l8:	Connection cable 2 x 15 AWG with input connector	6.5 ft (2.0 m)	AC	Connectors: white; Cable: white
244361	\$;04l9:	Connection cable 2 x 15 AWG with input connector		DC	Connectors: blue; Cable: white

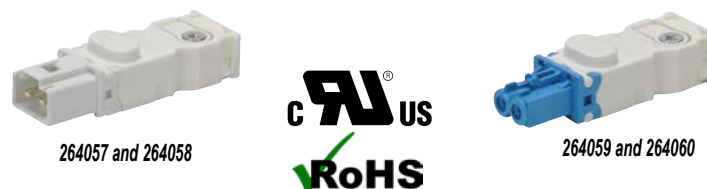
Extension cable with 2 connectors for daisy chain (input and output) connection



Part Number	Price	Description	Length	Voltage	Color
244359	\$;04ta:	Extension cable 2 x 15 AWG with 2 connectors	3.2 ft (1.0 m)	AC	Connectors: white; Cable: white
244363	\$;04tb:	Extension cable 2 x 15 AWG with 2 connectors		DC	Connectors: blue; Cable: white

Power Input and Output Connectors

(Field Wireable)



Part Number	Price	Description	Voltage	Color
264057	\$4c7:	Input connector	AC	White
264058	\$4c8:	Output connector		
264059	\$4c9:	Input connector	DC	Blue
264060	\$4ca:	Output connector		