

DINnectors Accessories

Steel DIN Rail (One-Meter Length)

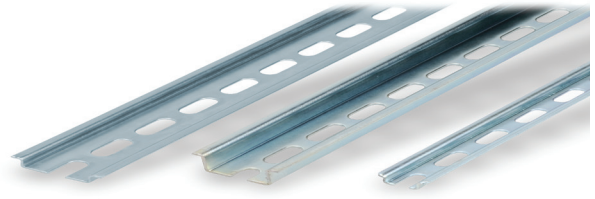
Features

35mm wide

- 7.5 mm-high rails primarily used to mount terminal blocks, relays, timers and small PLCs such as the BRX, CLICK, DirectLogic and Productivity series. 15mm-high rails for mounting larger and heavier components such as contactors and larger PLCs

15mm wide

- [DN-R15S1](#) exclusively for mounting mini terminal blocks such as the [DN-M10-A](#)



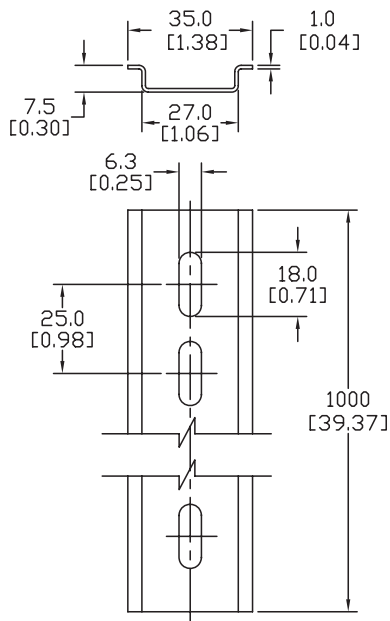
Steel DIN Rails Specifications

	Part Number	Qty	Price	Part Number	Qty	Price	Part Number	Qty	Price
DIN Rail	DN-R35S1	10	\$-07lx:	DN-R35HS1	10	\$-07lu:	DN-R15S1	10	\$-07ls:
	DN-R35S1-2	2	\$-07ly:	DN-R35HS1-2	2	\$-07lv:	DN-R15S1-2	2	\$;-07lt:
Description	DINnector DIN rail, slotted, 35mm width, 7.5mm height, 1m (39.37in) length, plated steel. Package of 10.			DINnector DIN rail, slotted, 35mm width, 15mm height, 1m (39.37in) length, plated steel. Package of 10.			DINnector DIN rail, slotted, 15mm width, 5.5mm height, 1m (39.37in) length, plated steel. Package of 10.		
Plating	Zinc-plated and chromated								
International Standards	EN 60715, RoHs								
Suggested Mounting Screw Type	M6			M6			M4		

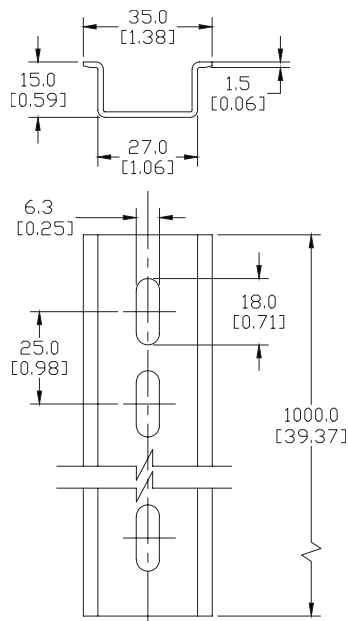
Dimensions

mm [inches]

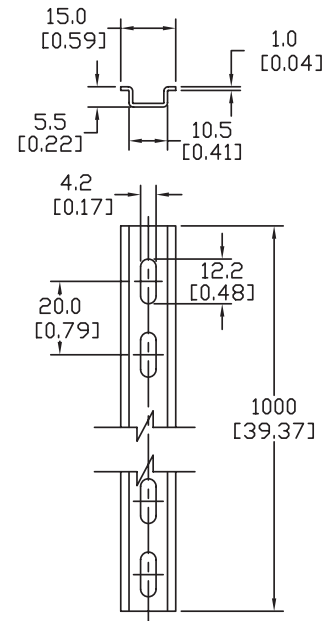
DN-R35S1



DN-R35HS1



DN-R15S1



See our website: www.AutomationDirect.com for complete engineering drawings

DINnectors Accessories

Aluminum DIN Rail (One-Meter Length)

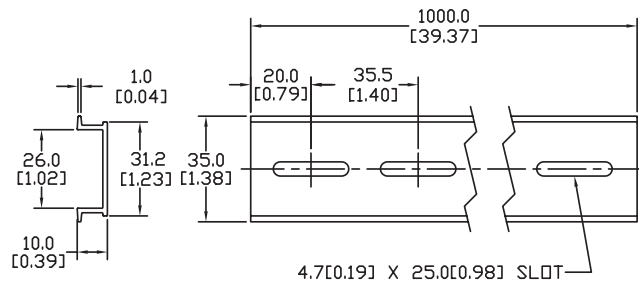
Features

35mm wide

- Non-anodized finish
- Terminal blocks only
- Maximum mounting screw #10-32 or M5
- Available in 1-meter standard length
- Quantity per pack: 2 or 10

Dimensions

mm [inches]

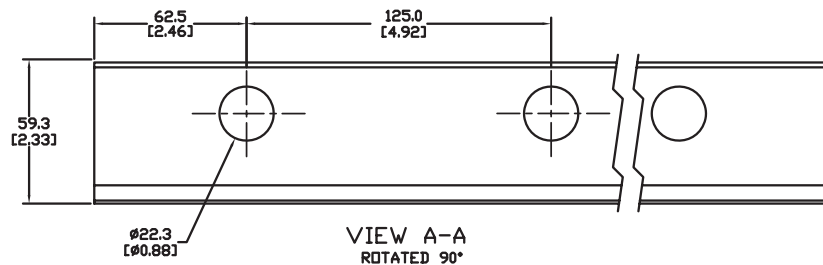


DN-R35SAL1
DN-R35SAL1-2

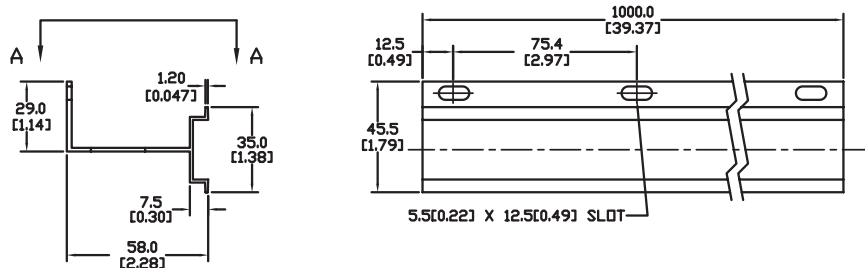
Features

35mm wide raised

- Non-anodized finish
- Enables users to raise terminal blocks 2¼" above the back panel
- Terminal blocks only
- Available in 1-meter standard length
- Bushing or grommet recommended for wire access hole (example Heyco UB-875 not sold by ADC)
- Quantity per pack: 2

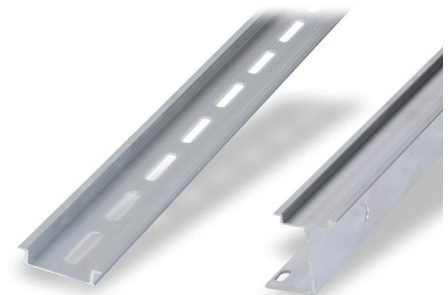


DN-R35SAL2-2



Aluminum DIN Rails Specifications (One-Meter Length)

	Part Number	Qty	Price	Part Number	Qty	Price
DIN Rail	<u>DN-R35SAL1</u>	10	\$-071z:	<u>DN-R35SAL2-2</u>	2	\$;-071[:
	<u>DN-R35SAL1-2</u>	2	\$;-071]:			
Description	DINnector DIN rail, slotted, 35mm width, 10mm height, 1m (39.37in) length, aluminum. Package of 10.			DINnector DIN rail, slotted, 2in raised 35mm width, 7.5mm height, 1m (39.37in) length, aluminum. Package of 2.		
International Standards	DIN 50960, RoHs					
Suggested Mounting Screw Type	#10-32 or M5					



See our website: www.AutomationDirect.com for complete engineering drawings

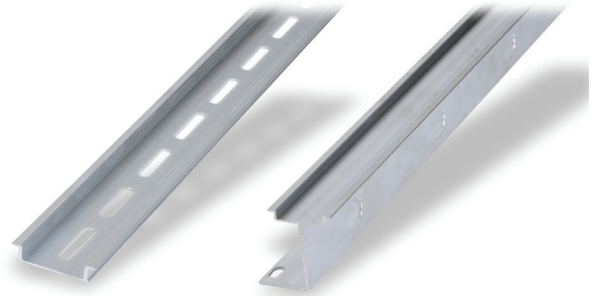
DINnectors® Accessories

Aluminum DIN Rail (Pre-Cut Lengths)

Features

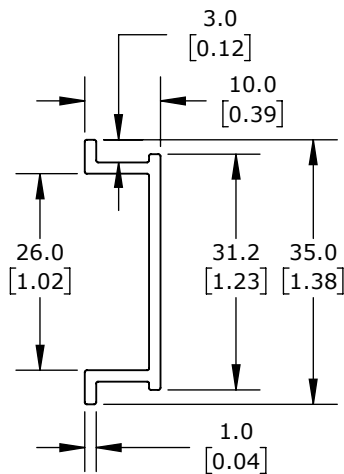
35mm wide

- Non-anodized finish
- Terminal blocks only
- Maximum mounting screw #10-32 or M5
- Available in variable lengths (see chart)
- Quantity per pack: 5



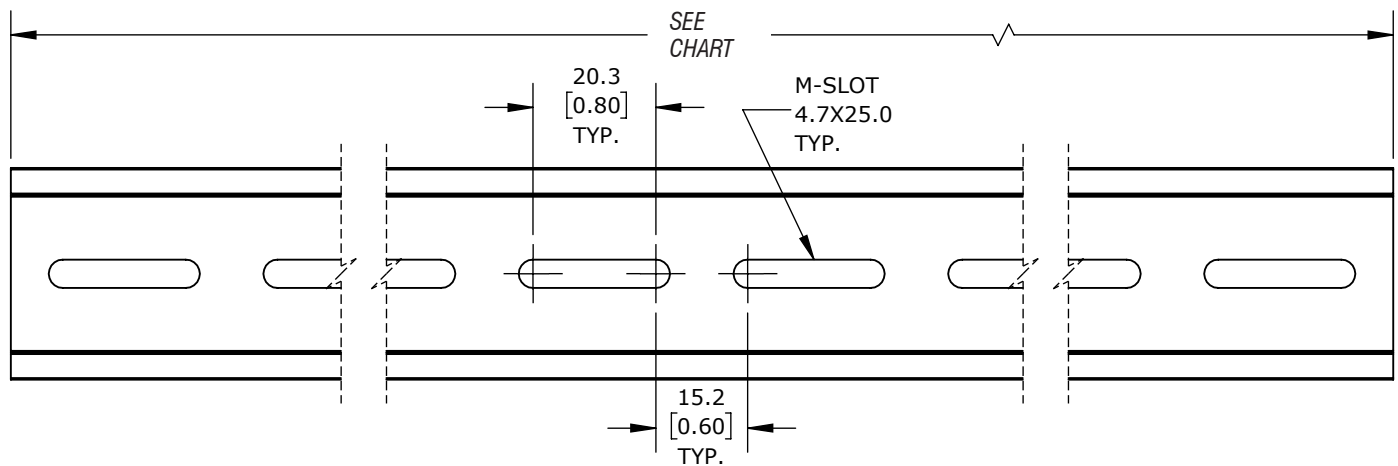
Dimensions

mm [inches]



Aluminum DIN Rails Specifications (Pre-Cut Lengths)

Part Number	Length mm [in]	Number of Slots	Price
<u>DN-R35SAL1-072-5</u>	72 [2.83]	2	\$,-6j)y:
<u>DN-R35SAL1-143-5</u>	143 [5.63]	4	\$,-6j)z:
<u>DN-R35SAL1-215-5</u>	215 [8.46]	6	\$,-6j)]:
<u>DN-R35SAL1-286-5</u>	286 [11.26]	8	\$,-6j)]:
<u>DN-R35SAL1-358-5</u>	358 [14.09]	10	\$,-6j)]:
<u>DN-R35SAL1-429-5</u>	429 [16.89]	12	\$,-6j)]#:
<u>DN-R35SAL1-500-5</u>	500 [19.69]	14	\$,-6j)]:
<u>DN-R35SAL1-572-5</u>	572 [22.52]	16	\$,-6j)]0:
<u>DN-R35SAL1-644-5</u>	644 [25.35]	18	\$,-6j)]1:
<u>DN-R35SAL1-715-5</u>	715 [28.15]	20	\$,-6j)]2:
<u>DN-R35SAL1-787-5</u>	787 [30.98]	22	\$,-6j)]:
<u>DN-R35SAL1-858-5</u>	858 [33.78]	24	\$,-6j)]?:



See our website: www.AutomationDirect.com for complete engineering drawings

DINnectors Accessories

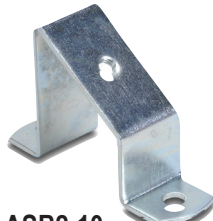
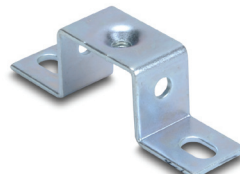
DIN rail support brackets

- Angled support brackets raise and tilt mounting rails 30 degrees from mounting surface for easier wiring
- [DN-ASB1](#) plated steel support bracket
- [DN-ASB2-10](#) cold-rolled steel treated with galvanic zinc plating and passivation

DIN rail mounting clips

- Snap small devices not made for mounting onto 35mm DIN rails
- Zinc-plated steel

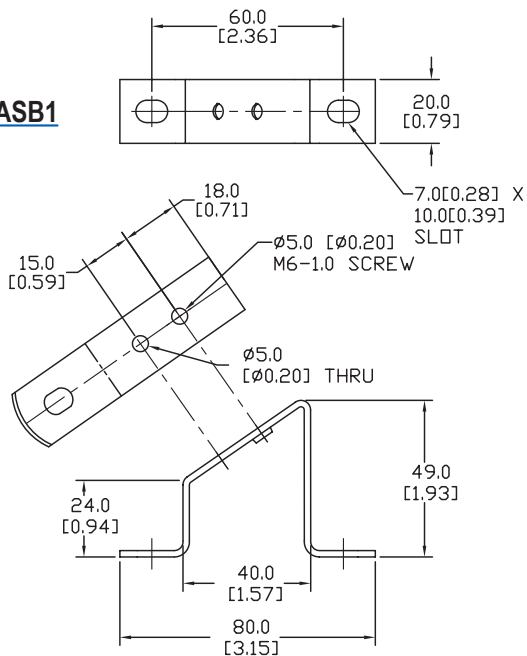
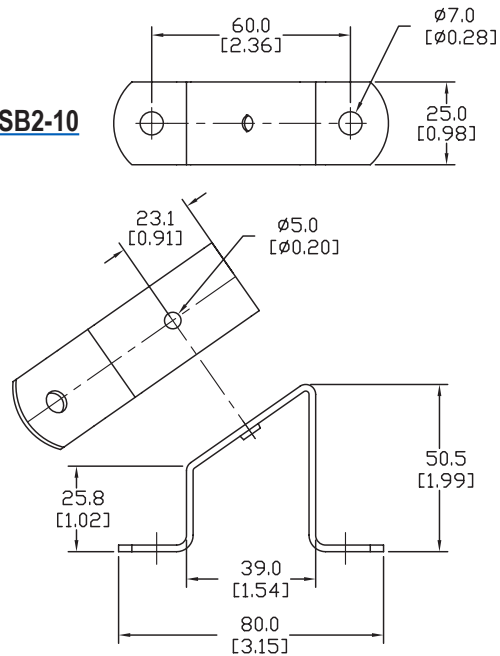
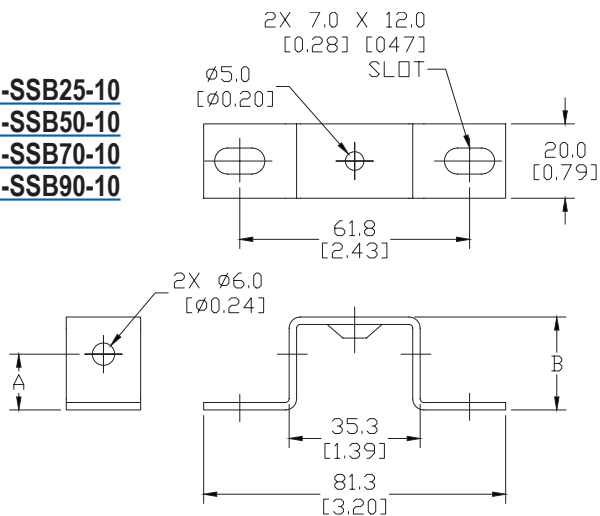
DIN Rail Support Brackets and Mounting Clips			
Part Number	Description	Qty	Price
DN-ASB1	30° angled DIN rail support bracket (M6-1.0 screws not included)	50	\$-.0071k:
DN-ASB2-10	30° angled DIN rail support bracket (M6-1.0 screws included)	10	\$--071l:
DN-SSB25-10	1" (25mm) DIN rail support bracket (M6-1.0 screws included)	10	\$-.071_:
DN-SSB50-10	2" (50mm) DIN rail support bracket (M6-1.0 screws included)	10	\$-.071#:
DN-SSB70-10	2.75" (70mm) DIN rail support bracket (M6-1.0 screws included)	10	\$;-071!:
DN-SSB90-10	3.5" (90mm) DIN rail support bracket (M6-1.0 screws included)	10	\$-.071?:
DN-CLIP-FM4	DIN rail mounting clip with M4 x 0.7 mm threaded hole (Screws not included)	40	\$-.071n:
DN-CLIP-FM4-5		5	\$-71o:
DN-CLIP-FM5	DIN rail mounting clip with M5 x 0.8 mm threaded hole (Screws not included)	40	\$-.071p:
DN-CLIP-FM5-5		5	\$-71q:

[DN-ASB1](#)[DN-ASB2-10](#)[DN-SSB25-10](#)[DN-SSB50-10](#)[DN-SSB70-10](#)[DN-SSB90-10](#)[DN-CLIP-FM4](#)
[DN-CLIP-FM4-5](#)[DN-CLIP-FM5](#)
[DN-CLIP-FM5-5](#)

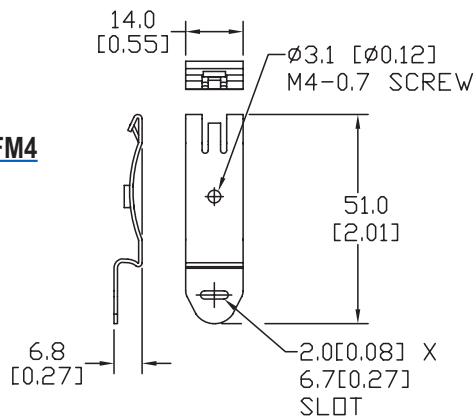
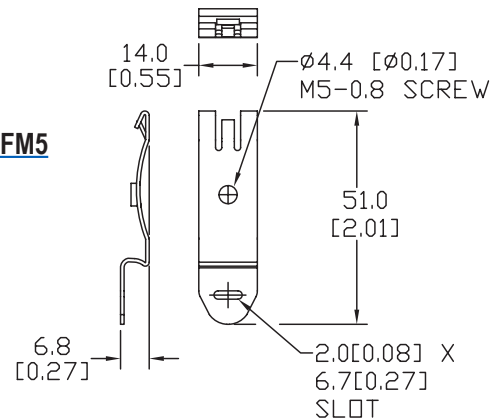
DINnectors® Accessories

Dimensions

mm [inches]

DN-ASB1**DN-ASB2-10**
DN-SSB25-10
DN-SSB50-10
DN-SSB70-10
DN-SSB90-10

DIN Rail Support Brackets

Part Number	DIM A mm [inches]	DIM B mm [inches]
DN-SSB25-10	15.0 [0.59]	25.0 [0.98]
DN-SSB50-10	40.0 [1.58]	50.0 [1.97]
DN-SSB70-10	60.0 [2.36]	70.0 [2.76]
DN-SSB90-10	80.0 [3.15]	90.0 [3.54]

DN-CLIP-FM4**DN-CLIP-FM5**See our website: www.AutomationDirect.com for complete engineering drawings