

# BX 10/10E MPUs Accessories

## BX 10/10E MPU Wiring Termination Selection

The BX 10/10E MPUs ship without wiring terminals. This enables you to select the termination solution that best fits your

application. Several wiring options are available, including removable screw terminal connectors,

removable spring clamp terminal connectors and prewired **ZIPLink** cable solutions.

## Terminal Block Connectors

The terminal block connectors are provided in kits and can be easily ordered as a single part number to receive all the terminal block connectors needed. Each

kit for the BX 10/10E MPU comes with two (2) 10-pin 3.8 mm terminal blocks. On the BX 10/10E MPUs the terminals are organized into groups consisting of

3 inputs with an isolated common and 2 outputs with an isolated common. For example, inputs X0-X2 are in a group with their common terminal.

### BX-RTB10 Screw Terminal Block Kit

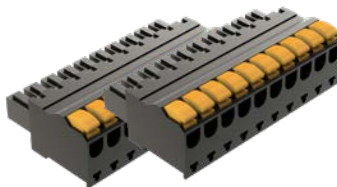
This terminal block kit includes 2 10-pin 3.8 mm terminal blocks (BX-RTB10). These are 90-degree screw terminal blocks. Wire is 180-degree pass through.



**BX-RTB10**

### BX-RTB10-1 Screw Terminal Block Kit

This terminal block kit includes 2 10-pin 3.8 mm terminal blocks (BX-RTB10-1). These are 90-degree screw terminal blocks. Wire is 180-degree pass through.



**BX-RTB10-1**

### BX-RTB10-2 Screw Terminal Block Kit

This terminal block kit includes (2) 10-pin 3.8 mm terminal blocks (BX-RTB10-2). These are 180-degree screw terminal blocks. Wire is 180-degree pass through.



**BX-RTB10-2**

## Removable Terminal Block Specifications

Part Number	<b>BX-RTB10</b>	<b>BX-RTB10-1</b>	<b>BX-RTB10-2</b>
<b>Price (pkg)</b>	\$128:	\$1296:	\$129b:
<b>Connector Type</b>	Screw Type-90-degree	Spring Clamp Type-180-degree	Screw Type-180-degree
<b>Wire Exit</b>	180-degree	180-degree	180-degree
<b>Pitch</b>	3.81 mm	3.81 mm	3.81 mm
<b>Screw Size</b>	M2	N/A	M2
<b>Recommended Screw Torque</b>	<1.77 lb·in [0.2 N·m]	N/A	<1.77 lb·in [0.2 N·m]
<b>Screwdriver Blade Width</b>	2.5 mm	2.5 mm	2.5 mm
<b>Wire Gauge (Single Wire)</b>	28–16 AWG	28–18 AWG	30–16 AWG
<b>Wire Gauge (Dual Wire)</b>	28–16 AWG	30–20 AWG (Dual Wire Ferrule Required)	30–18 AWG
<b>Wire Strip Length</b>	0.24 in [6mm]	0.35 in [9mm]	0.26 in [6.5 mm]
<b>Equiv. Dinkle part #</b>	EC381V-10P-BK	ESC381V-10-BK	EC381F-10P-BK