

BRX Pluggable Option Modules (POM)

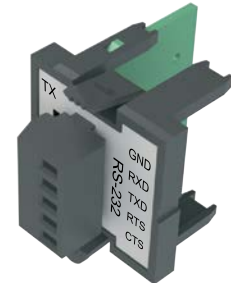
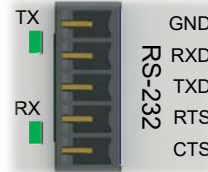
BX-P-SER2-TERMFC

The RS-232 POM can be connected to the Do-more! Designer programming software, Modbus RTU master or slave devices,

\$-4gi3:

DirectLogic PLCs via K-Sequence protocol, as well as devices that send or receive non-sequenced ASCII strings or characters.

Pinout	RS232
1	GND
2	RXD
3	TXD
4	RTS
5	CTS



Removable Connector Included

BX-P-SER2-TERMFC Specifications

Description	Non-isolated Serial port that can communicate via RS-232. Includes ESD protection and built-in surge protection.
Supported Protocols	Do-more!™ Protocol (Default) Modbus RTU (Master & Slave) K-Sequence (Slave) ASCII (In & Out)
Data Rates	1200, 2400, 4800, 9600, 19200, 38400, 57600, and 115200 Baud
Default Settings	115200bps, No Parity, 8 Data Bits, 1 Stop Bit, Station #1
Port Status LED	Green LED is illuminated when active for TXD and RXD
Port Type	Removable 5-pin terminal strip 3.5 mm pitch
RS-232 TX	RS-232 Transmit output
RS-232 RX	RS-232 Receive input
RS-232 GND	Logic ground
RS-232 CTS	RS-232 Clear to Send input
RS-232 RTS	RS-232 Request to Send input
RS-232 Maximum Output Load (TXD/RTS)	3kΩ, 1000pf
RS-232 Minimum Output Voltage Swing	±5V
RS-232 Output Short Circuit Protection	±15mA
Cable Requirements	RS-232 use P/N L19853-XXX from automationdirect.com
Maximum Distance	6 meters [20 foot] recommended maximum
Replacement Connector	ADC Part # BX-RTB05S
Hot Swappable	Yes
Software Version Required	Do-more! Designer version 2.7 or later

BX-RTB05S

\$;4gh!:

Replacement removable connector.



BX-RTB05S Connector Specifications

Part Number	BX-RTB05S
Connector Type	Screw type
Wire Exit	180-degree
Pitch	3.5 mm
Screw Size	M2
Recommended Screw Torque	<1.77 lb-in [0.2 N-m]
Screwdriver Blade Width	2.5 mm
Wire Gauge (Single Wire)	28-16 AWG
Wire Gauge (Two Wires)	28-16 AWG
Wire Strip Length	0.24 in [6mm]
Equiv. Dinkle part #	EC350V-05P-BK

BRX Pluggable Option Modules (POM)

BX-P-SER422-TERM

\$-4gi4:

The RS-422 POM can be connected to the Do-more! Designer programming software, Modbus RTU master devices, DirectLogic

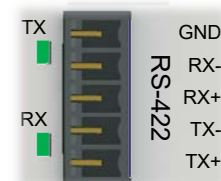
PLCs via K-Sequence protocol, as well as devices that send or receive non-sequenced ASCII strings or characters.



Removable Connector Included

BX-P-SER422-TERM Specifications	
Description	Non-isolated Serial port that can communicate via RS-422. Includes ESD protection and built-in surge protection.
Supported Protocols	Do-more!™ Protocol (Default) Modbus RTU (Master & Slave) K-Sequence (Slave) ASCII (In & Out)
Data Rates	1200, 2400, 4800, 9600, 19200, 38400, 57600, and 115200 Baud
Default Settings	115200bps, No Parity, 8 Data Bits, 1 Stop Bit, Station #1
Port Status LED	Green LED is illuminated when active for TXD and RXD
Port Type	Removable 5-pin terminal strip 3.5 mm pitch
Station Addresses	1–247
TX-/RX-	RS-422 Transceiver low
TX+/RX+	RS-422 Transceiver high
GND	Logic ground
Input Impedance	96kΩ
Maximum Load	50 transceivers, 19kΩ each, 120Ω termination
Output Short Circuit Protection	±250mA, thermal shutdown protection
Minimum Differential Output Voltage	2.0 VDC with 54Ω load
Maximum Common Mode Voltage	-7.5 to 12.5 VDC
Fail Safe Inputs	Logic high input state if inputs are unconnected
Electrostatic Discharge Protection	±15kV human body, ±6kV contact discharge per IEC61000-4-2
Cable Requirements	RS-422 use P/N L19853-XXX from automationdirect.com
Maximum Distance	1000 meters [3280 feet] recommended maximum
Replacement Connector	ADC Part # BX-RTB05S
Hot Swappable	Yes
Software Version Required	Do-more! Designer version 2.7 or later

Pinout	RS422
1	GND
2	RX-
3	RX+
4	TX-
5	TX+



BX-RTB05S

;\$4gh!:

Replacement removable connector.



BX-RTB05S Connector Specifications	
Part Number	BX-RTB05S
Connector Type	Screw type
Wire Exit	180-degree
Pitch	3.5 mm
Screw Size	M2
Recommended Screw Torque	<1.77 lb·in [0.2 N·m]
Screwdriver Blade Width	2.5 mm
Wire Gauge (Single Wire)	28–16 AWG
Wire Gauge (Two Wires)	28–16 AWG
Wire Strip Length	0.24 in [6mm]
Equiv. Dinkle part #	EC350V-05P-BK