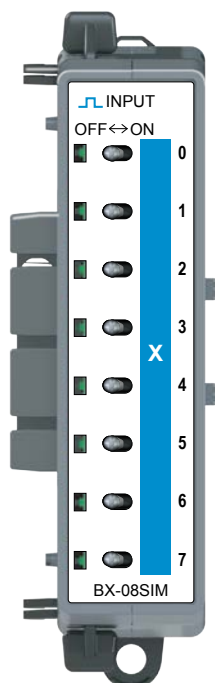


BX-08SIM Simulator Input Module



BX-08SIM \$-1oci:

Input Module 8-pt,
Simulator

Discrete Input Specifications	
Input Type	Simulator
Inputs per Module	8
Status Indicators	Logic Side, Green

IMPORTANT!



Hot-Swapping Information

Note: This device cannot be Hot Swapped.

BRX Discrete Expansion Modules

Overview

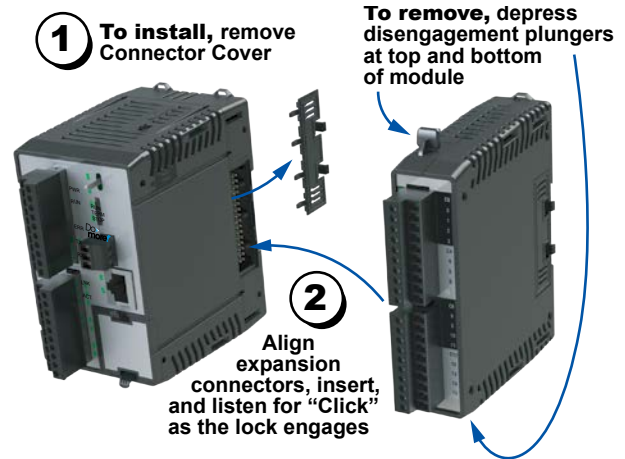
One of the unique features of the BRX platform is its ability to expand its capability to fit your application solution. One of the ways the BRX platform can do this is by using expansion modules that conveniently "snap-on" to the side of any BRX MPU. Once the expansion module has been snapped in place and is added to the project, it instantly adds I/O to the MPU with little to no additional setup required.

The expansion modules give you the ability to add discrete I/O as needed and are identified as an input module, output module or combination input/output module. On the front panel of the discrete I/O

expansion modules, a color scheme and a symbol are used to denote the module type.

Most modules are available in 5, 8, 12 or 16 point variations consisting of sink/source DC inputs/outputs, AC inputs/outputs, relay outputs and combination modules. Some are available with 32 points.

The modules ship without wiring terminals. This allows you to select the termination style that best fits your application. Several wiring options are available, including screw terminal connectors, spring clamp terminal connectors and pre-wired **ZIPLink** cable solutions.



Hot-Swapping Information

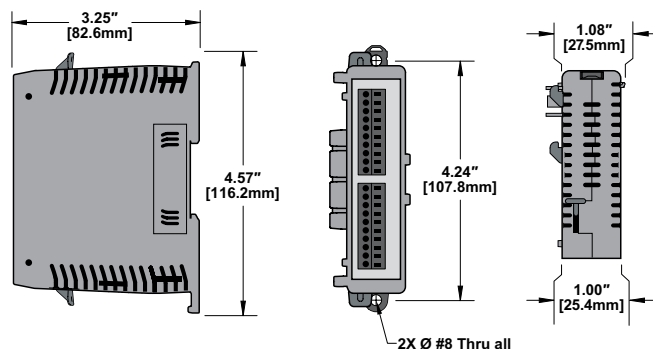
Note: This device cannot be Hot Swapped.

General Specifications

All BRX discrete expansion modules have the same general specifications listed in the table below.

General Specifications	
Operating Temperature	0° to 60°C [32° to 140°F]
Storage Temperature	-20° to 85°C [-4° to 185°F]
Humidity	5 to 95% (non-condensing)
Environmental Air	No corrosive gases permitted
Vibration	IEC60068-2-6 (Test Fc)
Shock	IEC60068-2-27 (Test Ea)
Enclosure Type	Open Equipment
Noise Immunity	NEMA ICS3-304
EU Directive	See the "EU Directive" topic in the Help File
Agency Approvals	UL 61010-2 - UL File # E185989 Canada and USA CE Compliant EN61131-2

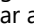
Dimensions, inches[mm]

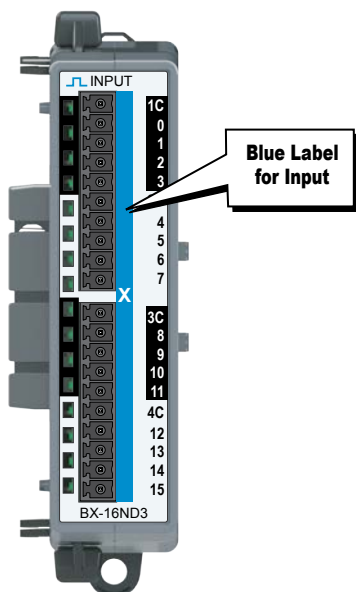


NOTE: When removing an expansion module make sure there is room for the module to slide away from the system. Failure to do so will result in difficulty in removing the module.

BRX Discrete Expansion Modules

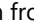
Discrete Input Modules

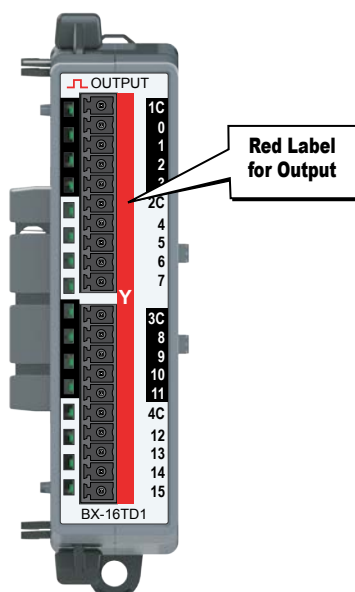
Thirteen (13) discrete input modules are available in various DC and AC voltage ranges. Input module faceplates have a blue terminal bar and symbol  for easy distinction from other module types.



Discrete Input Modules			
Part Number	Points	Input Type	Price
BX-08NF3	8	3 – 5 VDC Sink / Source	\$;126[:
BX-08ND3		12 – 24 VDC Sink / Source	\$12h0:
BX-08NB		24VAC	\$126?:
BX-08NA		120VAC	\$126_:
BX-08SIM		Simulator	\$-1oci:
BX-12ND3	12	12 – 24 VDC Sink / Source	\$12h1:
BX-12NB		24VAC	\$;126,:
BX-12NA		120VAC	\$126#:
BX-16NF3	16	3-5 VDC Sink/Source	\$;4o,7:
BX-16ND3		12 – 24 VDC Sink / Source	\$12h2:
BX-16NB		24VAC	\$1270:
BX-16NA		120VAC	\$;126!:
BX-32ND3	32	12 – 24 VDC Sink / Source	\$01oc6:

Discrete Output Modules

Eighteen (18) discrete output modules are available in DC sinking, DC sourcing, AC voltage and Relay type outputs. Output module faceplates have a red terminal bar and symbol  for easy distinction from other module types.

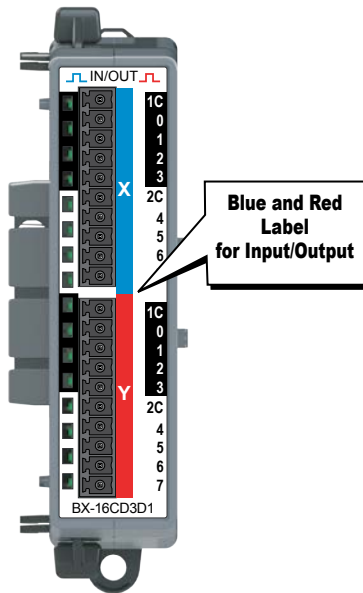


Discrete Output Modules			
Part Number	Points	Output Type	Price
BX-05TRS	5	Relay Form C (SPDT)	\$127c:
BX-05TRS-1		Relay Form C (SPDT)	\$;4o,4:
BX-08TD1	8	12 – 24 VDC Sinking	\$1273:
BX-08TD2		12 – 24 VDC Sourcing	\$1276:
BX-08TR		Relay Form A (SPST)	\$1279:
BX-08TA		120 – 240 VAC Triac	\$0127d:
BX-08TRZ		Relay Form A (SPST), no surge suppression	\$;4o,2:
BX-12TD1	12	12 – 24 VDC Sinking	\$1274:
BX-12TD2		12 – 24 VDC Sourcing	\$1277:
BX-12TR		Relay Form A (SPST)	\$127a:
BX-12TA	16	120 – 240 VAC Triac	\$0127e:
BX-16TD1		12 – 24 VDC Sinking	\$01275:
BX-16TD2		12 – 24 VDC Sourcing	\$01278:
BX-16TF2		3-5 VDC Sourcing	\$;4o,8:
BX-16TR		Relay Form A (SPST)	\$0127b:
BX-16TRZ	32	Relay Form A (SPST), no surge suppression	\$;04o,3:
BX-32TD1		12 – 24 VDC Sinking	\$-01ocj:
BX-32TD2		12 – 24 VDC Sourcing	\$01ock:

BRX Discrete Expansion Modules

Discrete Combo Input / Output Modules

Six discrete input/output combo modules are available with DC sink/source inputs and sink/source/relay outputs. The Input/Output faceplate terminal bar is in blue and red, making it easy to distinguish between inputs and outputs and from other module types.



Discrete Combo Input / Output Modules					
Part Number	Points		Input Type	Output Type	Price
	Input	Output			
<u>BX-08CD3R</u>	4	4	12–24 VDC Sink / Source	Relay Form A (SPST)	\$127g:
<u>BX-12CD3D1</u>	8	4		12–24 VDC Sinking	\$127h:
<u>BX-12CD3D2</u>				12–24 VDC Sourcing	\$-127i:
<u>BX-16CD3D1</u>	8	8		12–24 VDC Sinking	\$-127j:
<u>BX-16CD3D2</u>				12–24 VDC Sourcing	\$127k:
<u>BX-16CF3F2</u>			3–5 VDC Sink/Source	3–5 VDC Sourcing	\$;4o,0:

Expansion Module Support by Controller	
Controller Type	# Expansion Modules
BX-DM1E-M	8
BX-DM1-10	8
BX-DM1E-10	8
BX-DM1-18	8
BX-DM1E-18	8
BX-DM1-36	8
BX-DM1E-36	8
BX-DMIO*	8
BX-EBC100*	8
BX-MBIO*	8

* Remote I/O controllers do not support Motion Control and Communications Modules.