

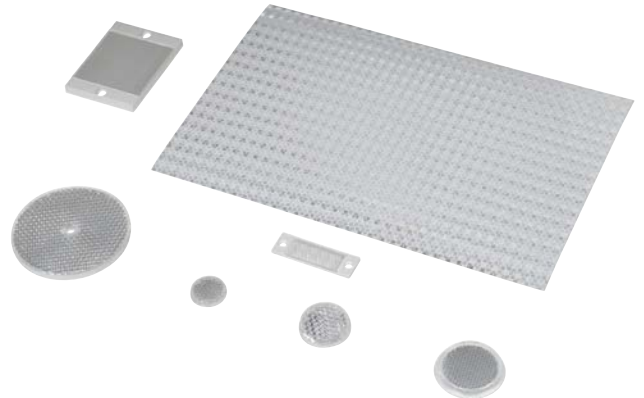
Reflectors

RL Series Reflectors for Polarized Reflective Photoelectric Sensors (All Models)

- Suitable for use with polarized light photoelectric sensors
- Shapes and sizes for most applications
- Miniature types for close mounting in multiple sensor installations
- Single hole, dual hole and self-adhesive mounting types available
- Single and 10-packs available

Installation Notes

- Keep the reflector surface clean to ensure peak detection performance. This is especially true when the maximum sensing range is being used. Clean using a damp cloth.
- When selecting a reflector, it is important to consider the ambient conditions it will be exposed to. Dusty or high humidity conditions may reduce the sensing range as much as 90%.
- Reflectors should be positioned at a 90° angle to the optical axis with a tolerance of $\pm 15^\circ$.



Reflector Specifications							
Part number	Price	Drawing Link	Quantity	Dimensions mm [in]	Degree of Protection	Mounting	Materials
RL102	\$;09[h:	PDF	10	25	IEC IP67	Customer-supplied adhesive or other mounting method required	Reflective face: PMMA Polymethylmethacrylate (acrylic) Base material: ABS (Acrylonitrile-butadiene-styren)
RL102-1	\$?6y:		1	[0.98]			
RL103	\$;-09[j:	PDF	10	34.5			
RL103-1	\$?6z:		1	[1.36]			
RL104	\$;-09[j:	PDF	10	46			
RL104-1	\$;?6]:		1	[1.81]			
RL105G	\$-2e_j:	PDF	10	95 x 38		Two 4.3 mm holes	
RL105G-1	\$2e_k:		1	[3.74 x 1.50]			
RL106G	\$;-09[l:	PDF	10	182 x 42		Two 6mm holes	
RL106G-1	\$?6_:		1	[7.17 x 1.65]			
RL110	\$;09[n:	PDF	10	84		One 5mm hole	
RL110-1	\$?6#:		1	[3.31]			
RL116	\$05yv:	PDF	10	41 x 60		Two 3mm holes	
RL116-1	\$;?6!:		1	[3.54 x 2.36]			
RL100DA4	\$0?77:	NA	1	200 x 300		Self-adhesive	Paper (Acrylic tape with micro prism)
RL100DC4	\$0?78:	NA	1	50 x 300			
RL100DQ1	\$?79:	NA	1	100 x 100			
RL111G	\$;0?6,:	PDF	10	22.5 x 47		Two 3mm slots	Reflective face: PMMA Polymethylmethacrylate (acrylic) Base material: ABS (Acrylonitrile-butadiene-styren)
RL111G-1	\$?6?:		1	[0.89 x 1.85]			
RL112G	\$0?71:	PDF	10	19 x 73			
RL112G-1	\$?70:		1	[0.75 x 2.87]			
RL113G	\$0?73:	PDF	10	51.4 x 60.3		Two 4mm slots	
RL113G-1	\$?72:		1	[2.02 x 2.37]			

Not recommended for applications involving moist air environments or water immersion.

Reflectors

RL Series Reflectors for Polarized Reflective Laser Photoelectric Sensors (FALN series)

- Suitable for use with polarized light laser photoelectric sensors
- Sizes for most applications
- Miniature types for close mounting in multiple sensor installations
- Single and 5-packs available

Specifications						
Part Number	RL201	RL201-1	RL203	RL203-1	RL204	RL204-1
Price	\$;09[o:	\$?74:	\$;09[p:	\$?75:	\$;09[q:	\$?76:
Quantity	5	1	5	1	5	1
Drawing Link	PDF		PDF		PDF	
Dimensions	60 x 82 mm 2.36 x 3.23 in		19 x 6mm 0.75 x 2.36 in		20mm x 32mm 0.80 in x 1.26 in	
Degree of Protection ¹	IEC IP67					
Mounting	Two 0.4 mm holes		Two 0.4 mm holes		Two 0.3 mm holes	
Materials	Acrylic/polycarbonate					

¹ Not recommended for applications involving moist air environments or water immersion.

Reflectors

Reflectors for Photoelectric Laser Sensors

Reflectors for OPT Series Photoelectric Sensors				
Part Number	Price	Description	Drawing Link	Weight lb [g]
OPT2030	\$,07,0:	Reflector, square, 100 x 100mm. For use with photoelectric laser sensors.	PDF	0.20 [90.71]
OPT2167	\$,4jod:	Wenglor reflector, rectangular, 61 x 51.5mm. For use with OPT2137 & OPT2138.	PDF	0.03 [13.60]

Note: [OPT2015](#) requires purchase of [OPT2030](#) reflector. <50m sensing distance requires 1 reflector. 50–100 m sensing distance requires 4 reflectors.



[OPT2167](#)



[OPT2030](#)