

# Accessories for 50 Series Photoelectric Sensors

## Mounting Brackets

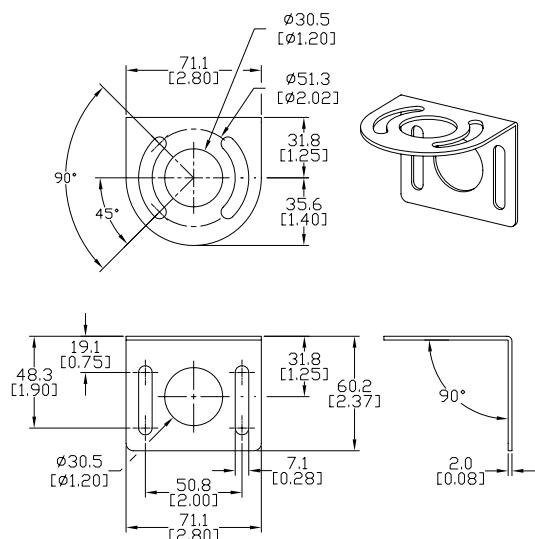
Short, tall or ball-swivel style of mounting brackets are available. All styles allow 360° rotation of the sensor.

*Note: Cutler-Hammer parts available for sale to North America locations only.*

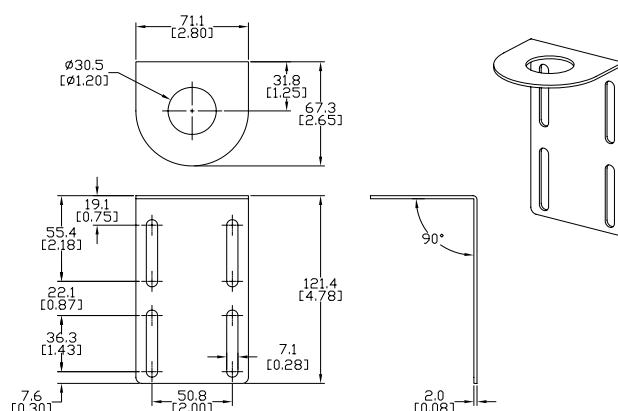
## Dimensions

mm [inches]

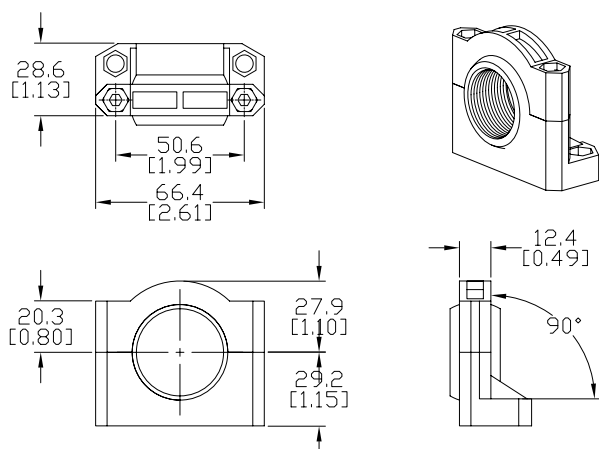
Accessories for Enhanced 50 Series Sensors			
Part Number	Price	Description	Weight [lb]
<a href="#"><u>6150E-6501</u></a>	\$05hu:	Mounting bracket, right-angle, 1.5in vertical adjustment, nickel plated steel. For use with CH Enhanced 50 Series sensor.	0.20
<a href="#"><u>6150E-6502</u></a>	\$05hv:	Mounting bracket, right-angle, 3.5in vertical adjustment, nickel plated steel. For use with CH Enhanced 50 Series sensor.	0.39
<a href="#"><u>6150E-6503</u></a>	\$05hx:	Mounting bracket, right-angle ball swivel, 60 degree vertical and horizontal adjustment, plastic. For use with CH Enhanced 50 Series sensor. Ball swivel allows for ±30° angle.	0.11



[6150E-6501](#)



[6150E-6502](#)



[6150E-6503](#)