

Accessories for 3mm Sensors

Right-angle Mounting Bracket

Mounting bracket, right-angle, 316L stainless steel. Package of 2.
For use with 3mm sensors.

Accessories for 3mm Sensors				
Part Number	Price	Description	Drawing Link	Weight [lb]
OPT2037	\$--1nll:	Wenglor mounting bracket, right-angle, 316L stainless steel. Package of 2. For use with 3mm sensors.	PDF	0.02



[OPT2037](#)

Accessories for 4mm Sensors

Right-angle Mounting Bracket

Mounting bracket, right-angle, plastic. For use with 4mm sensors.

Accessories for 4mm Sensors				
Part Number	Price	Description	Drawing Link	Weight [lb]
OPT2106	\$-1nlv:	Wenglor mounting bracket, right-angle, plastic. For use with 4mm sensors.	PDF	0.02



[OPT2106](#)

Accessories for 5mm Sensors

Right-angle Mounting Bracket

Mounting bracket, right-angle, plastic. For use with 5mm sensors.

Accessories for 5mm Sensors				
Part Number	Price	Description	Drawing Link	Weight [lb]
OPT2100	\$-1nlo:	Wenglor mounting bracket, right-angle, plastic. For use with 5mm sensors.	PDF	0.02



[OPT2100](#)

Accessories for 6.5 mm Sensors

Right-angle Mounting Bracket

Mounting bracket, right-angle, plastic. For use with 6.5 mm sensors.

Accessories for 6.5 mm Sensors				
Part Number	Price	Description	Drawing Link	Weight [lb]
OPT2107	\$-1nlx:	Wenglor mounting bracket, right-angle, plastic. For use with 6.5mm sensors.	PDF	0.02



[OPT2107](#)

Accessories for 8mm Sensors

Axial Mounting Bracket

Mounting bracket, axial, zinc-plated steel. For use with 8mm sensors. Has two mounting holes (use 3 mm screws) and allows the rotation of an optical axis for axial sensors. Hexagonal nuts not included.

Accessories for 8mm Sensors				
Part Number	Price	Description	Drawing Link	Weight [lb]
<u>ST08A</u>	\$;10#t:	Micro Detectors mounting bracket, axial, zinc plated steel. For use with 8mm sensors.	<u>PDF</u>	0.04



[ST08A](#)

Right-angle Mounting Bracket

Mounting bracket, right-angle, zinc-plated steel. For use with 8mm sensors. Has two mounting holes (use 3mm screws) and allows the rotation of an optical axis for right-beam-angle-adaptor sensors. Hexagonal nuts not included.

Accessories for 8mm Sensors				
Part Number	Price	Description	Drawing Link	Weight [lb]
<u>ST08C</u>	\$10#u:	Micro Detectors mounting bracket, right-angle, zinc plated steel. For use with 8mm sensors.	<u>PDF</u>	0.04



[ST08C](#)

Accessories for 8mm Sensors

Right-angle Mounting Bracket

Mounting bracket, right-angle, plastic. For use with 8mm sensors.

Accessories for 8mm Sensors				
Part Number	Price	Description	Drawing Link	Weight [lb]
<u>OPT2101</u>	\$-1nlp:	Wenglor mounting bracket, right-angle, plastic. For use with 8mm sensors.	<u>PDF</u>	0.02



[OPT2101](#)

Right-angle Swivel Mounting Systems

Mounting bracket, right-angle swivel, 360 degree vertical and horizontal adjustment. For use with 8mm sensors. Available in all stainless steel or with an aluminum head and stainless steel mounting plate.

Accessories for 8mm Sensors						
Part Number	Price	Description	Mounting Head	Mounting Plate	Drawing Link	Weight [lb]
<u>OPT2112</u>	\$-1nlz:	Wenglor mounting bracket, right-angle swivel, 360 degree vertical and horizontal adjustment, aluminum, 12mm rod mount. For use with 8mm sensors.	Aluminum	304 Stainless Steel	<u>PDF</u>	0.14
<u>OPT2113</u>	\$;-1nlj:	Wenglor mounting bracket, right-angle swivel, 360 degree vertical and horizontal adjustment, 304 stainless steel, 12mm rod mount. For use with 8mm sensors.	304 Stainless Steel	304 Stainless Steel	<u>PDF</u>	0.26



[OPT2112 & OPT2113](#)

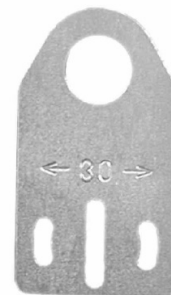
Note: 304 Stainless steel mounting rods sold separately: [OPT2109](#) (200mm length), [OPT2110](#) (300mm length), and [OPT2111](#) (500mm length).

Accessories for 12mm Sensors

Axial Mounting Bracket

Mounting bracket, axial, available in zinc-plated steel or 316L stainless steel. For use with 12mm sensors. Has two mounting holes (use 3mm screws) and allows the rotation of an optical axis for right-angle adapter sensors. Hexagonal nuts not included.

Accessories for 12mm Sensors				
Part Number	Price	Description	Drawing Link	Weight lb [g]
<u>ST12A</u>	\$97 _:	Micro Detectors mounting bracket, axial, zinc plated steel. For use with 12mm sensors.	<u>PDF</u>	0.03 [13.6]
<u>ST12A7W</u>	\$97#:	Micro Detectors mounting bracket, axial, 316L stainless steel. For use with 12mm sensors.	<u>PDF</u>	0.03 [13.6]



[ST12A](#)

Right-angle Mounting Bracket

Mounting bracket, right-angle, zinc-plated steel or 316L stainless steel. For use with 12mm sensors. Has two mounting holes (use 3mm screws) and allows the rotation of an optical axis for axial sensors. Hexagonal screws not included.

Accessories for 12mm Sensors				
Part Number	Price	Description	Drawing Link	Weight lb [g]
<u>ST12C</u>	\$;97!:	Micro Detectors mounting bracket, right-angle, zinc plated steel. For use with 12mm sensors.	<u>PDF</u>	0.03 [13.6]
<u>ST12C7W</u>	\$97?:	Micro Detectors mounting bracket, right-angle, 316L stainless steel. For use with 12mm sensors.	<u>PDF</u>	0.03 [13.6]



[ST12C](#)

Accessories for 12mm Sensors

Right-angle Fine Tune Mounting Bracket

Mounting bracket, right-angle, fine tune vertical and horizontal adjustment, nickel-plated steel. For use with 12mm sensors. Enables fine tuning vertical and horizontal placement.

Accessories for 12mm Sensors				
Part Number	Price	Description	Drawing Link	Weight [lb]
OPT2035	\$~1nlj:	Wenglor mounting bracket, right-angle, fine tune vertical and horizontal adjustment, nickel plated steel. For use with 12mm sensors.	PDF	0.16



[OPT2035](#)

Accessories for 12mm Sensors

Right-angle Mounting Brackets

Mounting bracket, right-angle, fixed insertion stop adjustment, plastic. For use with 12mm sensors. Available with or without fixed insertion stop.

Accessories for 12mm Sensors				
Part Number	Price	Description	Drawing Link	Weight lb [g]
OPT2102	\$-1nlq:	Wenglor mounting bracket, right-angle, fixed insertion stop adjustment, plastic. For use with 12mm sensors.	PDF	0.05 [22.7]
OPT2103	\$-1nls:	Wenglor mounting bracket, right-angle, plastic. For use with 12mm sensors.	PDF	0.05 [22.7]



[OPT2102](#), [OPT2103](#)

Right-angle Swivel Mounting Systems

Mounting bracket, right-angle swivel, 360 degree vertical and horizontal adjustment, 12mm rod mount. For use with 12mm sensors. Available in all stainless steel or with an aluminum head and stainless steel mounting plate.

Accessories for 12mm Sensors						
Part Number	Price	Description	Mounting Head	Mounting Plate	Drawing Link	Weight lb [g]
OPT2114	\$;-1nl[:	Wenglor mounting bracket, right-angle swivel, 360 degree vertical and horizontal adjustment, aluminum, 12mm rod mount. For use with 12mm sensors.	Aluminum	Stainless steel	PDF	0.14 [63.5]
OPT2115	\$-1nl_:	Wenglor mounting bracket, right-angle swivel, 360 degree vertical and horizontal adjustment, 304 stainless steel, 12mm rod mount. For use with 12mm sensors.	304 Stainless steel	304 Stainless steel	PDF	0.27 [122.5]

Note: 304 stainless steel mounting rods sold separately: [OPT2109](#) (200mm [7.87 in] length), [OPT2110](#) (300mm [11.81 in] length), and [OPT2111](#) (500mm [19.69 in] length).



[OPT2114](#), [OPT2115](#)

Accessories for 18mm Sensors

Axial Mounting Bracket

Axial mounting bracket available in zinc plated steel or 316L stainless steel. Has two mounting holes (use 4mm screws) and allows for rotation of an optical axis for right-beam-angle-adaptor sensors. Hexagonal nuts not included. For use with 18mm sensors.

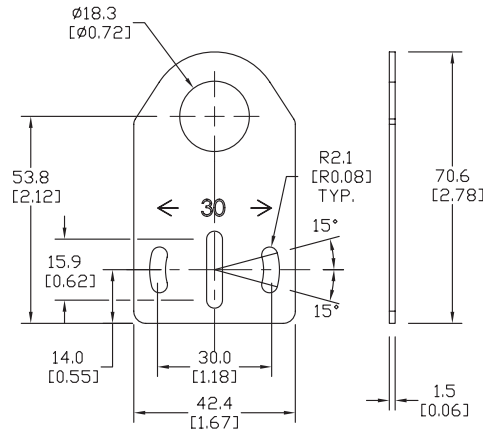
Accessories for 18mm Sensors			
Part Number	Price	Description	Weight lb [g]
<u>ST18A</u>	\$97.:	Micro Detectors mounting bracket, axial, zinc plated steel. For use with 18mm sensors.	0.06 [27.2]
<u>ST18A7W</u>	\$980:	Micro Detectors mounting bracket, axial, 316L stainless steel. For use with 18mm sensors.	0.06 [27.2]



ST18A

Dimensions

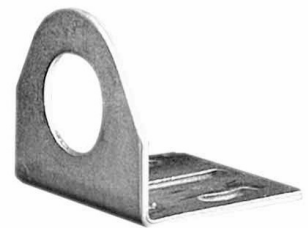
mm [inches]



Right-angle Mounting Bracket

Right-angle mounting bracket for use with 18mm sensors. Has two mounting holes (use 4mm screws) and allows the rotation of an optical axis for axial sensors. Hexagonal nuts not included.

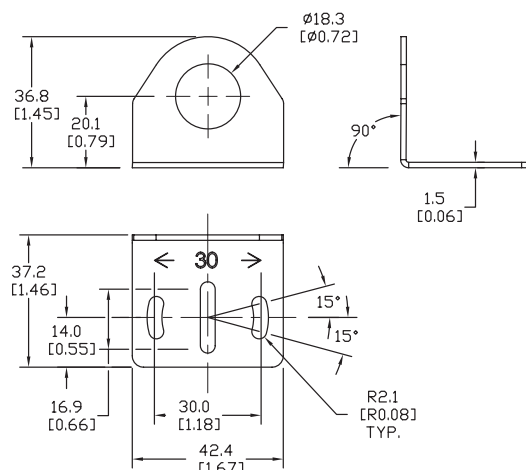
Accessories for 18mm Sensors			
Part Number	Price	Description	Weight lb [g]
<u>ST18C</u>	\$981:	Micro Detectors mounting bracket, right-angle, zinc plated steel. For use with 18mm sensors.	0.06 [27.2]
<u>ST18C7W</u>	\$982:	Micro Detectors mounting bracket, right-angle, 316L stainless steel. For use with 18mm sensors.	0.06 [27.2]



ST18C

Dimensions

mm [inches]

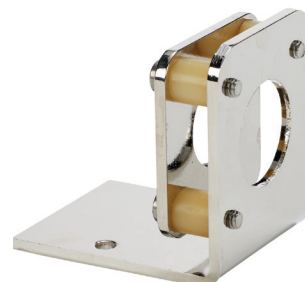


Accessories for 18mm Sensors

Right-angle Fine Tune Mounting Bracket

Mounting bracket, right-angle, fine tune vertical and horizontal adjustment, nickel-plated steel. For use with 18mm sensors. Allows for fine tuning vertical and horizontal placement.

Accessories for 18mm Sensors				
Part Number	Price	Description	Drawing Link	Weight [lb]
OPT2036	\$-1nlk:	Wenglor mounting bracket, right-angle, fine tune vertical and horizontal adjustment, nickel plated steel. For use with 18mm sensors.	PDF	0.02

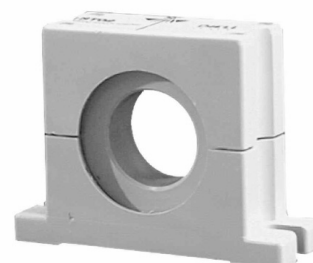


[OPT2036](#)

Swivel Mounting Bracket

Mounting bracket, ball swivel, plastic. For use with 18mm sensors. Has a ball-joint and set screws to adjust sensor orientation. Allows angular orientation up to 15 degrees (from center) in all directions for photoelectric sensors (Will not work with C18 series).

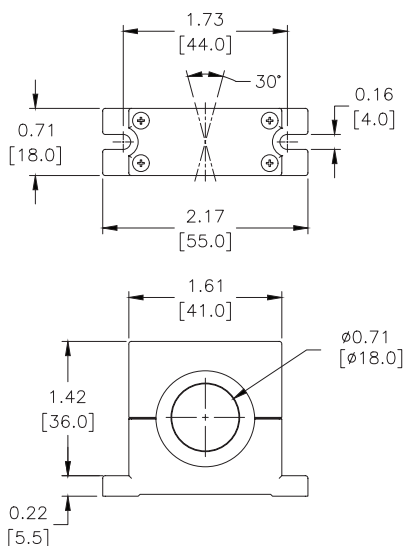
Accessories for 18mm Sensors			
Part Number	Price	Description	Weight [lb]
ST02	\$05h#:	Micro Detectors mounting bracket, ball swivel, plastic. For use with 18mm sensors.	0.06



[ST02](#)

Dimensions

mm [inches]



Accessories for 18mm Sensors

Right-angle Mounting Brackets

Mounting bracket, right-angle, fixed insertion stop adjustment, plastic. For use with 18mm sensors. Available with or without fixed insertion stop.

Accessories for 18mm Sensors				
Part Number	Price	Description	Drawing Link	Weight lb [g]
OPT2104	\$;-1nlt:	Wenglor mounting bracket, right-angle, fixed insertion stop adjustment, plastic. For use with 18mm sensors.	PDF	0.06 [27.2]
OPT2105	\$;-1nlu:	Wenglor mounting bracket, right-angle, plastic. For use with 18mm sensors.	PDF	0.06 [27.2]



[OPT2104](#), [OPT2105](#)

Right-angle Swivel Mounting Systems

Mounting bracket, right-angle swivel, 360 degree vertical and horizontal adjustment, 12mm rod mount. For use with 18mm sensors. Available in all 304 stainless steel or with an aluminum head and a stainless steel mounting plate.

Accessories for 18mm Sensors						
Part Number	Price	Description	Mounting Head	Mounting Plate	Drawing Link	Weight lb [g]
OPT2116	\$;-1n#:	Wenglor mounting bracket, right-angle swivel, 360 degree vertical and horizontal adjustment, aluminum, 12mm rod mount. For use with 18mm sensors.	Aluminum	304 Stainless steel	PDF	0.15 [68.0]
OPT2117	\$;-1nll:	Wenglor mounting bracket, right-angle swivel, 360 degree vertical and horizontal adjustment, 304 stainless steel, 12mm rod mount. For use with 18mm sensors.	304 Stainless steel	304 Stainless steel	PDF	0.28 [127.0]



[OPT2116](#), [OPT2117](#)

Note: 304 Stainless steel mounting rods sold separately: [OPT2109](#) (200mm [7.87 in] length), [OPT2110](#) (300mm [11.81 in] length), and [OPT2111](#) (500mm [19.69 in] length).

Accessories for OPT2024 - OPT2025

Photoelectric Sensors

Right-angle Mounting Brackets

Mounting bracket, right-angle, vertical adjustment, nickel plated steel. For use with [OPT2024](#)-[OPT2025](#) photoelectric sensors.

Mounting Brackets for OPT Series Photoelectric Sensors					
Part Number	Price	Description	Qty	Drawing Link	Weight g [oz]
OPT2034	\$1nx4:	Wenglor mounting bracket, right-angle, vertical adjustment, nickel plated steel. For use with OPT2024 & OPT2025 photoelectric sensors.	1	PDF	38 [1.34]



[OPT2034](#)

Right-angle Swivel Mounting Systems

Mounting bracket, right-angle swivel, 360 degree vertical and horizontal adjustment, 12mm rod mount. For use with [OPT2024](#)-[OPT2025](#) photoelectric sensors. Available in all 304 stainless steel or with an aluminum mounting head and 304 stainless steel mounting plate.

Accessories for 25mm Sensors						
Part Number	Price	Description	Mounting Head	Mounting Plate	Drawing Link	Weight [lb]
OPT2124	\$1nn4:	Wenglor mounting bracket, right-angle swivel, 360 degree vertical and horizontal adjustment, aluminum, 12mm rod mount. For use with OPT2024 & OPT2025 photoelectric sensors.	Aluminum	304 Stainless Steel	PDF	0.15
OPT2125	\$1nn5:	Wenglor mounting bracket, right-angle swivel, 360 degree vertical and horizontal adjustment, 304 stainless steel, 12mm rod mount. For use with OPT2024 & OPT2025 photoelectric sensors.	304 Stainless Steel	304 Stainless Steel	PDF	0.27

Note: 304 Stainless steel mounting rods sold separately: [OPT2109](#) (200mm length), [OPT2110](#) (300mm length), and [OPT2111](#) (500mm length).



[OPT2124](#), [OPT2125](#)

Accessories for OPT Series 32x12mm Photoelectric Sensors

Right-Angle Mounting Brackets

Mounting bracket, right angle, vertical adjustment. For use with OPT series 32x12mm photoelectric sensors.

Mounting Brackets for OPT 32x12mm Sensors					
Part Number	Price	Description	Qty	Drawing Link	Weight lb [g]
<u>OPT2033</u>	\$1nx3:	Wenglor mounting bracket, right-angle, vertical adjustment, nickel plated steel. For use with OPT series 32x12mm photoelectric sensors.	1	<u>PDF</u>	0.04 [16]



[OPT2033](#)

Right-angle Swivel Mounting Systems

Mounting bracket, right-angle swivel, 360 degree vertical and horizontal adjustment, aluminum, 12mm rod mount. For use with OPT series 32x12mm photoelectric sensors.

Accessories for 32x12mm Sensors						
Part Number	Price	Description	Mounting Head	Mounting Plate	Drawing Link	Weight lb [g]
<u>OPT2120</u>	\$1nn0:	Wenglor mounting bracket, right-angle swivel, 360 degree vertical and horizontal adjustment, aluminum, 12mm rod mount. For use with OPT series 32x12mm photoelectric sensors.	Aluminum	304 Stainless Steel	<u>PDF</u>	0.14 [63.50]
<u>OPT2121</u>	\$1nn1:	Wenglor mounting bracket, right-angle swivel, 360 degree vertical and horizontal adjustment, 304 stainless steel, 12mm rod mount. For use with OPT series 32x12mm photoelectric sensors.	304 Stainless Steel	304 Stainless Steel	<u>PDF</u>	0.27 [122.46]

Note: 304 Stainless steel mounting rods sold separately: [OPT2109](#) (200mm length), [OPT2110](#) (300mm length), and [OPT2111](#) (500mm length).



[OPT2121](#)



[OPT2120](#)

Accessories for 30mm Sensors

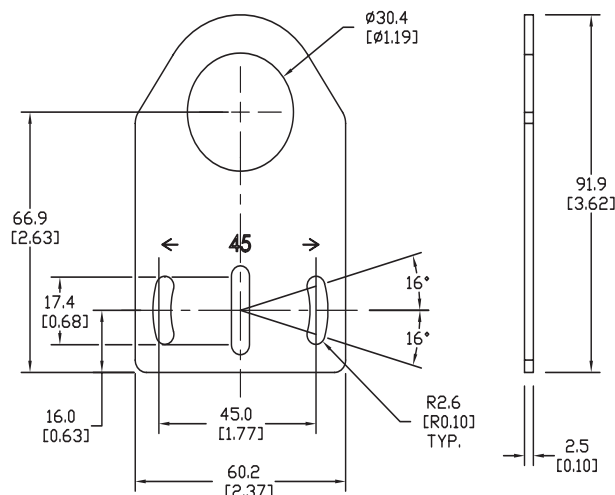
Axial Mounting Bracket

Mounting bracket, axial, zinc-plated steel. For use with 30mm sensors. Has two mounting holes (use 5mm screws) and allows the rotation of an optical axis for right-beam-angle-adaptor sensors. Hexagonal nuts not included.

Accessories for 30mm Sensors			
Part Number	Price	Description	Weight lb [g]
ST30A	\$983:	Micro Detectors mounting bracket, axial, zinc plated steel. For use with 30mm sensors.	0.18 [81.7]

Dimensions

mm [inches]



ST30A

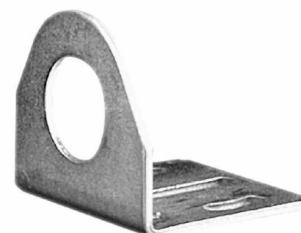
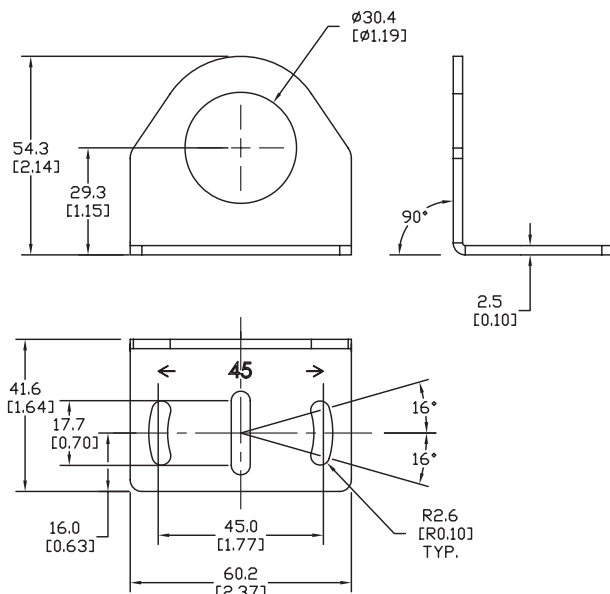
Right-angle Mounting Bracket

Mounting bracket, right-angle, zinc-plated steel. For use with 30mm sensors. Has two mounting holes (use 5mm screws) and allows the rotation of an optical axis for axial sensors. Hexagonal nuts not included.

Accessories for 30mm Sensors			
Part Number	Price	Description	Weight lb [g]
ST30C	\$984:	Micro Detectors mounting bracket, right-angle, zinc plated steel. For use with 30mm sensors.	0.18 [81.7]

Dimensions

mm [inches]



ST30C

Accessories for 30mm Sensors

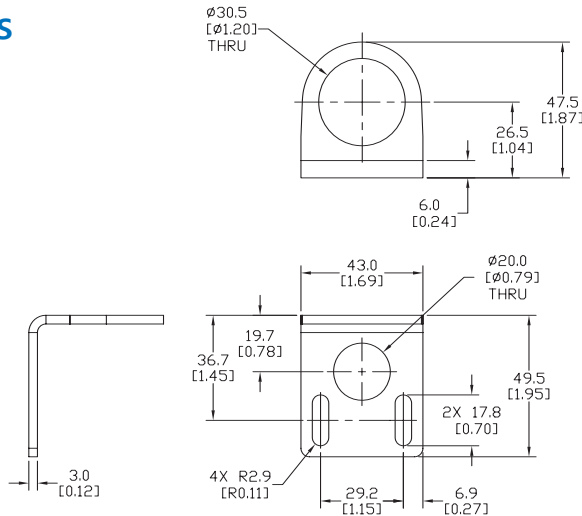
Right-angle Mounting Bracket

Mounting bracket, right-angle, 304 stainless steel. For use with 30mm sensors.

Accessories for FW Series Sensors			
Part Number	Price	Description	Weight lb [g]
<u>ST30C6W</u>	\$-511:	AutomationDirect mounting bracket, right-angle, 304 stainless steel. For use with 30mm sensors.	0.15 (68.0)

Dimensions

mm [inches]



[ST30C6W](#)

Right-angle Swivel Mounting Systems

Mounting bracket, right-angle swivel, 360 degree vertical and horizontal adjustment, 12mm rod mount. For use with 30mm sensors. Available in all 304 stainless steel or with an aluminum head with a 304 stainless steel mounting plate.

Accessories for 30mm Sensors						
Part Number	Price	Description	Mounting Head	Mounting Plate	Drawing Link	Weight lb [g]
<u>OPT2118</u>	\$-1n1?:	Wenglor mounting bracket, right-angle swivel, 360 degree vertical and horizontal adjustment, aluminum, 12mm rod mount. For use with 30mm sensors.	Aluminum	304 Stainless steel	<u>PDF</u>	0.18 [81.7]
<u>OPT2119</u>	\$;-1n1,:	Wenglor mounting bracket, right-angle swivel, 360 degree vertical and horizontal adjustment, 304 stainless steel, 12mm rod mount. For use with 30mm sensors.	304 Stainless Steel	304 Stainless steel	<u>PDF</u>	0.18 [81.7]

Note: 304 Stainless steel mounting rods sold separately: [OPT2109](#) (200mm [7.87 in] length), [OPT2110](#) (300mm [11.81 in] length), and [OPT2111](#) (500mm [19.69 in] length).



[OPT2118](#), [OPT2119](#)

Accessories for OPT2012 - OPT2015

Photoelectric Sensors

Right-angle Mounting Brackets

Mounting bracket, right angle, steel and nickel plated. For use with [OPT2012](#)-[OPT2015](#) photoelectric sensors.

Accessories for OPT2012-OPT2015 Photoelectric Sensors				
Part Number	Price	Description	Drawing Link	Weight lb (g)
OPT2032	\$,7?,::	Wenglor mounting bracket, right-angle, nickel-plated brass. For use with OPT2012 - OPT2015 photoelectric sensors.	PDF	0.36 (163.29)



[OPT2032](#)

Right-angle Swivel Mounting Systems

Mounting bracket, right-angle swivel, 360 degree vertical and horizontal adjustment, 12mm rod mount. For use with [OPT2012](#)-[OPT2015](#) photoelectric sensors. Available in all stainless steel or with an aluminum head with a stainless steel mounting plate.

Accessories for OPT2012-OPT2015 Photoelectric Sensors						
Part Number	Price	Description	Mounting Head	Mounting Plate	Drawing Link	Weight lb [g]
OPT2126	\$1nn6:	Wenglor mounting bracket, right-angle swivel, 360 degree vertical and horizontal adjustment, aluminum, 12mm rod mount. For use with OPT2012 - OPT2015 photoelectric sensors.	Aluminum	304 Stainless Steel	PDF	0.23 [104.32]
OPT2127	\$1nn7:	Wenglor mounting bracket, right-angle swivel, 360 degree vertical and horizontal adjustment, 304 stainless steel, 12mm rod mount. For use with OPT2012 - OPT2015 photoelectric sensors.	304 Stainless Steel	304 Stainless Steel	PDF	0.36 [163.29]



[OPT2126](#)

[OPT2127](#)

Note: 304 Stainless steel mounting rods sold separately: [OPT2109](#) (200mm length), [OPT2110](#) (300mm length), and [OPT2111](#) (500mm length).

Accessories for OPT Series 50x50mm Photoelectric Sensors

Right-angle Brackets

Mounting bracket, right-angle, nickel-plated steel or 304 stainless steel.
For use with OPT series 50x50mm photoelectric sensors.

Accessories for OPT Series 50x50mm Photoelectric Sensors				
Part Number	Price	Description	Drawing Link	Weight [lb]
OPT2031	\$7??:	Wenglor mounting bracket, right-angle, nickel-plated brass. For use with OPT series 50x50mm photoelectric sensors.	PDF	0.24
OPT2038	\$-1nln:	Wenglor mounting bracket, right-angle, vertical and horizontal adjustment, 304 stainless steel. For use with OPT series 50x50mm photoelectric sensors.	PDF	0.19



[OPT2031](#)



[OPT2038](#)

Accessories for OPT Series 50x50mm Photoelectric Sensors

Right-angle Swivel Mounting Systems

Mounting bracket, right-angle swivel, 360 degree vertical and horizontal adjustment, 12mm rod mount. For use with OPT series 50x50mm photoelectric sensors. Available in all stainless steel or with an aluminum head with a stainless steel mounting plate.

Accessories for OPT Series 50x50mm Photoelectric Sensors						
Part Number	Price	Description	Mounting Head	Mounting Plate	Drawing Link	Weight [lb]
<u>OPT2122</u>	\$1nn2:	Wenglor mounting bracket, right-angle swivel, 360 degree vertical and horizontal adjustment, aluminum, 12mm rod mount. For use with OPT series 50x50mm photoelectric sensors.	Aluminum	304 Stainless Steel	<u>PDF</u>	0.19
<u>OPT2123</u>	\$1nn3:	Wenglor mounting bracket, right-angle swivel, 360 degree vertical and horizontal adjustment, 304 stainless steel, 12mm rod mount. For use with OPT series 50x50mm photoelectric sensors.	304 Stainless Steel	304 Stainless Steel	<u>PDF</u>	0.31

NOTE:

304 Stainless steel mounting rods sold separately: [OPT2109](#) (200mm length), [OPT2110](#) (300mm length), and [OPT2111](#) [500mm length].



[OPT2122,](#)
[OPT2123](#)



C23 Mounting Brackets

C23 Mounting Brackets



LXW-C23PA-000



LXW-C23PA-001



LXW-C23PA-002



LXW-C23PA-003

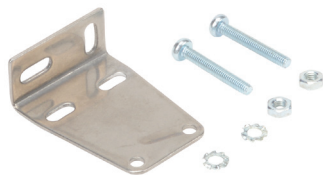
C23 Mounting Brackets				
Part Number	Price	Description	Weight	Drawing Link
<u>LXW-C23PA-000</u>	\$5kxs:	Contrinex mounting bracket, right-angle horizontal, 304 stainless steel. For use with Contrinex C23 photoelectric sensors.	13g	PDF
<u>LXW-C23PA-001</u>	\$;5kxt:	Contrinex mounting bracket, right-angle vertical, 304 stainless steel. For use with Contrinex C23 photoelectric sensors.	20g	PDF
<u>LXW-C23PA-002</u>	\$;5kx[:	Contrinex mounting bracket, protective, 304 stainless steel. For use with Contrinex C23 photoelectric sensors.	16g	PDF
<u>LXW-C23PA-003</u>	\$5kx_:	Contrinex mounting bracket, protective dual-axis, 304 stainless steel. For use with Contrinex C23 photoelectric sensors.	49g	PDF

Accessories for QM and FM Series Photoelectric Sensors

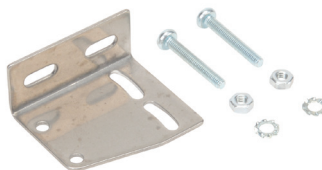
Right-angle Mounting Brackets

Mounting bracket, right-angle vertical, 304 stainless steel. For use with QM & FM series photoelectric sensors. Mounting hardware included.

Accessories for QM and FM Series Photoelectric Sensors				
Part Number	Price	Description	Drawing Link	Weight [lb]
ST101	\$5.10	Micro Detectors mounting bracket, right-angle vertical, 304 stainless steel. For use with QM & FM series photoelectric sensors. Mounting hardware included.	PDF	0.04
ST102	\$5.20	Micro Detectors mounting bracket, right-angle horizontal, 304 stainless steel. For use with QM & FM series photoelectric sensors. Mounting hardware included.	PDF	0.05
ST104	\$5.10	Micro Detectors mounting bracket, protective horizontal, 304 stainless steel. For use with prewired QM & FM series photoelectric sensors only. Mounting hardware included.	PDF	0.05



[ST101](#)



[ST102](#)



[ST104](#)

Accessories for QM Series Photoelectric Sensors

Mounting Bracket

Mounting bracket, protective vertical, 304 stainless steel. For use with prewired QM series photoelectric sensors only. Mounting hardware included.

Accessories for QM Series Photoelectric Sensor				
Part Number	Price	Description	Drawing Link	Weight [lb]
ST103	\$;5h,:	Micro Detectors mounting bracket, protective vertical, 304 stainless steel. For use with prewired QM series photoelectric sensors only. Mounting hardware included.	PDF	0.06



[ST103](#)

Mounting Rods and Brackets

Mounting Rods

304 Stainless steel rods for mounting swivel brackets [OPT2112](#) - [OPT2127](#). Available in three lengths: 200mm, 300mm, and 500mm. 12mm diameter.

Mounting Rods for OPT2112-2127 Swivel Mounting Brackets				
Part Number	Price	Description	Drawing Link	Weight lb (g)
OPT2109	\$1nn9:	Wenglor mounting rod, 12mm diameter, 200mm length, 304 stainless steel.	PDF	0.41 [185.97]
OPT2110	\$1nna:	Wenglor mounting rod, 12mm diameter, 300mm length, 304 stainless steel.	PDF	0.60 [272.16]
OPT2111	\$1nnb:	Wenglor mounting rod, 12mm diameter, 500mm length, 304 stainless steel.	PDF	0.98 [444.52]



Right-angle Mounting Bracket

Mounting bracket, right-angle, nickel-plated brass. For use with 12mm mounting rods [OPT2109](#), [OPT2110](#) & [OPT2111](#).

Right-angle Mounting Brackets for 12mm Sensors				
Part Number	Price	Description	Drawing Link	Weight lb [g]
OPT2108	\$-1nly:	Wenglor mounting bracket, right-angle, nickel-plated brass. For use with 12mm mounting rods OPT2109, OPT2110 & OPT2111.	PDF	0.07 [31.8]



Accessories for 50 Series Photoelectric Sensors

Mounting Brackets

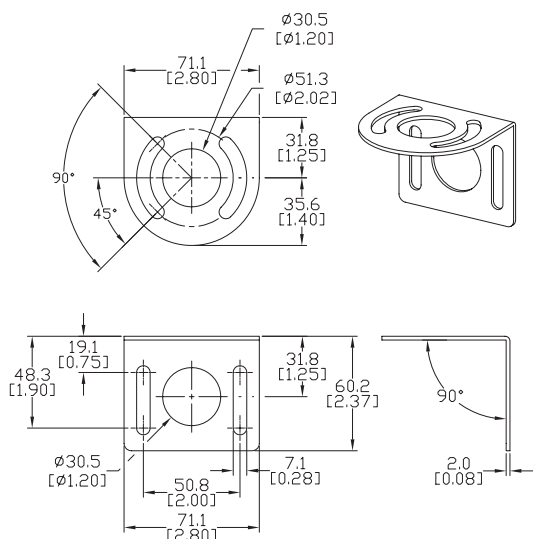
Short, tall or ball-swivel style of mounting brackets are available. All styles allow 360° rotation of the sensor.

Note: Cutler-Hammer parts available for sale to North America locations only.

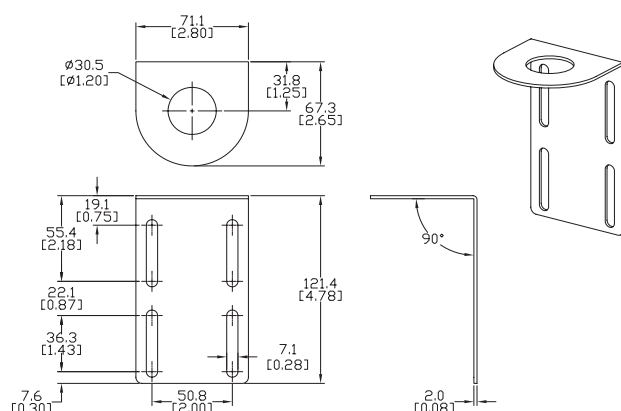
Dimensions

mm [inches]

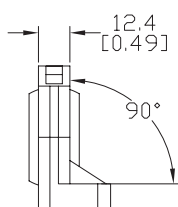
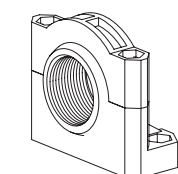
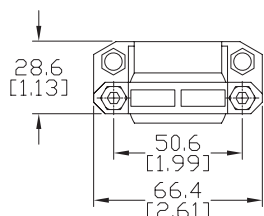
Accessories for Enhanced 50 Series Sensors			
Part Number	Price	Description	Weight [lb]
<u>6150E-6501</u>	\$05hu:	Mounting bracket, right-angle, 1.5in vertical adjustment, nickel plated steel. For use with CH Enhanced 50 Series sensor.	0.20
<u>6150E-6502</u>	\$05hv:	Mounting bracket, right-angle, 3.5in vertical adjustment, nickel plated steel. For use with CH Enhanced 50 Series sensor.	0.39
<u>6150E-6503</u>	\$05hx:	Mounting bracket, right-angle ball swivel, 60 degree vertical and horizontal adjustment, plastic. For use with CH Enhanced 50 Series sensor. Ball swivel allows for ±30° angle.	0.11



[6150E-6501](#)



[6150E-6502](#)



[6150E-6503](#)

Accessories for S8 Series Contrast

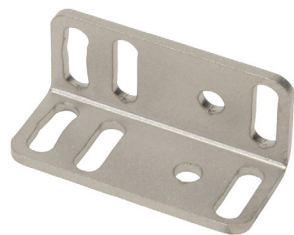
Photoelectric Sensors

Mounting Brackets

Accessories for S8 Series Contrast Photoelectric Sensors				
Part Number	Price	Description	Drawing Link	Weight [lb]
ST-S8-FRM	\$12c5:	Datalogic mounting bracket, vertical, 304 stainless steel. For use with S8 series contrast sensors.	PDF	0.48
ST-5072	\$12c6:	Datalogic mounting bracket, right-angle, 304 stainless steel. For use with S8 series contrast sensors.	PDF	0.10



[ST-S8-FRM](#)



[ST-5072](#)

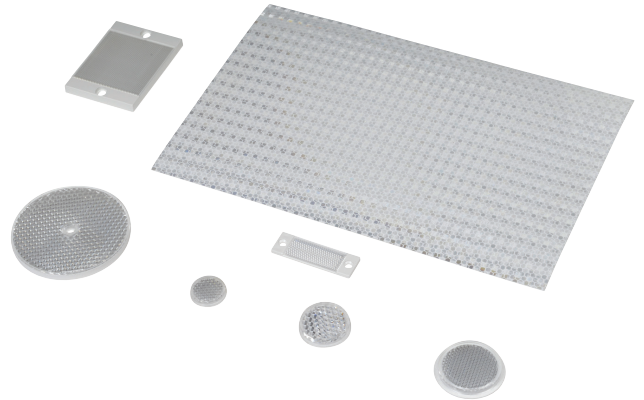
Reflectors

RL Series Reflectors for Polarized Reflective Photoelectric Sensors (All Models)

- Suitable for use with polarized light photoelectric sensors
- Shapes and sizes for most applications
- Miniature types for close mounting in multiple sensor installations
- Single hole, dual hole and self-adhesive mounting types available
- Single and 10-packs available

Installation Notes

- Keep the reflector surface clean to ensure peak detection performance. This is especially true when the maximum sensing range is being used. Clean using a damp cloth.
- When selecting a reflector, it is important to consider the ambient conditions it will be exposed to. Dusty or high humidity conditions may reduce the sensing range as much as 90%.
- Reflectors should be positioned at a 90° angle to the optical axis with a tolerance of $\pm 15^\circ$.



Reflector Specifications							
Part number	Price	Drawing Link	Quantity	Dimensions mm [in]	Degree of Protection	Mounting	Materials
RL102	\$;09[h:	PDF	10	25	IEC IP67	Customer-supplied adhesive or other mounting method required	Reflective face: PMMA Polymethylmethacrylate (acrylic) Base material: ABS (Acrylonitrile-butadiene-styren)
RL102-1	\$?6y:		1	[0.98]			
RL103	\$;-09[i:	PDF	10	34.5			
RL103-1	\$?6z:		1	[1.36]			
RL104	\$;-09[j:	PDF	10	46			
RL104-1	\$;?6]:		1	[1.81]			
RL105G	\$-2e_j:	PDF	10	95 x 38		Two 4.3 mm holes	
RL105G-1	\$2e_k:		1	[3.74 x 1.50]			
RL106G	\$;-09[l:	PDF	10	182 x 42		Two 6mm holes	
RL106G-1	\$?6_:		1	[7.17 x 1.65]			
RL110	\$;09[n:	PDF	10	84		One 5mm hole	
RL110-1	\$?6#:		1	[3.31]			
RL116	\$05yv:	PDF	10	41 x 60		Two 3mm holes	
RL116-1	\$;?6!:		1	[3.54 x 2.36]			
RL100DA4	\$0?77:	NA	1	200 x 300		Self-adhesive	Paper (Acrylic tape with micro prism)
RL100DC4	\$0?78:	NA	1	50 x 300			
RL100DQ1	\$?79:	NA	1	100 x 100			
RL111G	\$;0?6,:	PDF	10	22.5 x 47		Two 3mm slots	Reflective face: PMMA Polymethylmethacrylate (acrylic) Base material: ABS (Acrylonitrile-butadiene-styren)
RL111G-1	\$?6?:		1	[0.89 x 1.85]			
RL112G	\$0?71:	PDF	10	19 x 73			
RL112G-1	\$?70:		1	[0.75 x 2.87]			
RL113G	\$0?73:	PDF	10	51.4 x 60.3		Two 4mm slots	
RL113G-1	\$?72:		1	[2.02 x 2.37]			

Not recommended for applications involving moist air environments or water immersion.

Reflectors

RL Series Reflectors for Polarized Reflective Laser Photoelectric Sensors (FALN series)

- Suitable for use with polarized light laser photoelectric sensors
- Sizes for most applications
- Miniature types for close mounting in multiple sensor installations
- Single and 5-packs available

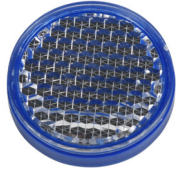
Specifications						
Part Number	RL201	RL201-1	RL203	RL203-1	RL204	RL204-1
Price	\$;09[o:	\$?74:	\$;09[p:	\$?75:	\$;09[q:	\$?76:
Quantity	5	1	5	1	5	1
Drawing Link	PDF		PDF		PDF	
Dimensions	60 x 82 mm 2.36 x 3.23 in		19 x 6mm 0.75 x 2.36 in		20mm x 32mm 0.80 in x 1.26 in	
Degree of Protection ¹	IEC IP67					
Mounting	Two 0.4 mm holes		Two 0.4 mm holes		Two 0.3 mm holes	
Materials	Acrylic/polycarbonate					

¹ Not recommended for applications involving moist air environments or water immersion.

CONTRINEX Reflectors

C23 TRU Series Reflectors

- Protection: IP67
- Temperature: -40 to +70 °C [-40 to 158 °F]
- Material: Plastic



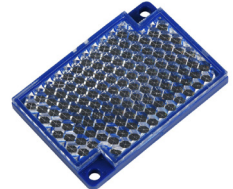
LXU-0000-025



LXU-0000-084



LXU-0001-032



LXU-0001-064

C23 TRU Series Reflectors					
Part Number	Price	Description	Self-adhesive	Weight	Drawing Link
<u>LXU-0000-025</u>	\$5kxy:	Contrinex reflector, round, 26.4mm. Package of 1. For use with Contrinex C23 TRU series photoelectric sensors.	Yes	4g	PDF
<u>LXU-0000-084</u>	\$5kxz:	Contrinex reflector, round, 82mm. Package of 1. For use with Contrinex C23 TRU series photoelectric sensors.	No	27g	PDF
<u>LXU-0001-032</u>	\$.5kxj:	Contrinex reflector, rectangular, 20 x 32mm. Package of 1. For use with Contrinex C23 TRU series photoelectric sensors.	No	4g	PDF
<u>LXU-0001-064</u>	\$5kx#:	Contrinex reflector, rectangular, 41 x 60mm. Package of 1. For use with Contrinex C23 TRU series photoelectric sensors.	No	14g	PDF

Reflectors

Reflectors for Photoelectric Laser Sensors

Reflectors for OPT Series Photoelectric Sensors				
Part Number	Price	Description	Drawing Link	Weight lb [g]
OPT2030	\$,07,0:	Reflector, square, 100 x 100mm. For use with photoelectric laser sensors.	PDF	0.20 [90.71]
OPT2167	\$,4jod:	Wenglor reflector, rectangular, 61 x 51.5mm. For use with OPT2137 & OPT2138.	PDF	0.03 [13.60]

Note: [OPT2015](#) requires purchase of [OPT2030](#) reflector. <50m sensing distance requires 1 reflector. 50–100 m sensing distance requires 4 reflectors.



[OPT2167](#)



[OPT2030](#)

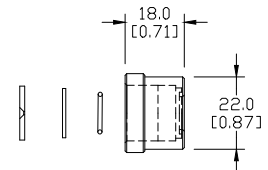
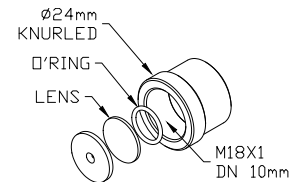
Shutters and Adapters

Shutters for M18 (18mm) Through-beam Sensors (SSE / SSR)

- Reduces the emitted beam, allowing the detection of small targets
- Shutter consists of an aluminum cap and aperture with an O-ring and glass lens, which can screw onto the optical head of either the emitter or receiver



Dimensions mm [inches]



Sensing Distance (When Used with SSE / SSR Model Photoelectric Switches)						
Model	STOS1	STOS2	STOS3	STOS4	STOS6	STOS8
Price	Retired	Retired	Retired	Retired	Retired	Retired
Ø x shutter (mm)	1	2	3	4	6	8
Distance (m) Object (mm)	N/A	N/A	N/A	1.5 2	3.5 3	6.5 4

Table shows sensing distance and minimal detectable object.

Shutter Accessory for QM Series Sensors				
Part Number	Price	Drawing Link	Description	Weight [lb]
STQM0	\$6un:	PDF	Micro Detectors shutter, plastic. Package of 2. For use with through beam QM series photoelectric sensors. Vertical and horizontal diaphragms (0.5, 1, 2mm) included.	0.1

Shutter STQM0 Sensing Distances			
Shutter Size	0.5 mm	1mm	2mm
Maximum Sensing Distance	1.5 m	2 m	4.5 m
Minimum Detectable Object Diameter	0.8 mm	1.5 mm	2.5 mm

Note: With shutters on emitter and receiver in same vertical or horizontal orientation.

Right-angle M18 (18 mm) Beam Adapter

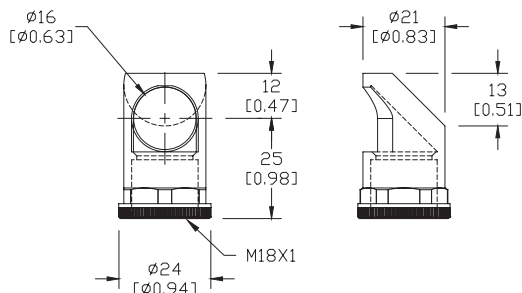
For use with M18 retroreflective and through-beam photoelectric switches (not for use with diffuse reflection sensors). Allows 90° light detection using an internal mirror set at 45° to the optical axis. Sensitivity loss is about 20-30%.



ST03

Beam Adapters			
Part Number	Price	Description	Weight [lb]
ST03	\$;04b!:	Micro Detectors right-angle beam adapter, for use with 18mm sensors (except diffuse reflection models), mirror allows 90 degree light detection.	0.06

Dimensions mm [inches]





M18 Plastic Accessories



LLW-M18PA-000

M18 Plastic Right-Angle Adapters				
Part Number	Price	Description	Weight	Drawing Link
<u>LHW-M18PA-000</u>	\$;55te:	Contrinex right-angle beam adapter, ABS plastic, 18mm. For use with Contrinex LHR 18mm photoelectrics. Mirror allows 90 degree light detection.	2g	<u>PDF</u>
<u>LTW-M18PA-000</u>	\$;55?l:	Contrinex right-angle beam adapter, ABS plastic, 18mm. For use with Contrinex LTR/LRR 18mm photoelectrics. Mirror allows 90 degree light detection.	2g	<u>PDF</u>
<u>LLW-M18PA-000</u>	\$55?#:	Contrinex right-angle beam adapter, ABS plastic, 18mm. For use with Contrinex LLR 18mm photoelectrics. Mirror allows 90 degree light detection.	2g	<u>PDF</u>

Sensor Tester



Features

- Fast field check of various sensor types
- LED and acoustic indicator
- Current supply to 100mA
- Rechargeable battery
- Adapted to universal micro-USB charger



SEN-TESTER-001				
Part Number	Price	Description	Weight	Drawing Link
<u>SEN-TESTER-001</u>	\$,55td:	AutomationDirect sensor tester, 24 VDC output. 9V rechargeable battery included.	96g	<u>PDF</u>

Specifications	
Sensor Supply Voltage	24VDC
Max Sensor Supply Current	100mA
Output Types	PNP and NPN and push -pull
Current Limit	Yes
Rechargeable Battery Type	LiPo 9V (min 500mAh)
Standard Battery Type	Alkaline 6LR61 9V
Rechargeable Battery Included	LiPo 9V; 600mAh
Battery Life (600 mAh)	> 2 hours at 50 mA
Charging Time (at 500mA)	< 5 hours
Automatic Switch Off	After ~120 seconds of non-use
LED, green	Supply Voltage
LED, green blinking (1Hz)	Low battery (< 15% full)
LED, green blinking (4Hz)	Charging, phase 1 (\leq 90% full)
LED, green blinking (2Hz)	Charging, phase 2 (> 90% full)
LED, yellow	Output state
Micro-USB interface for charger	Yes
Charger Type (not included)	Universal mobile phone charger
Enclosure Rating	IP40

NOTE: Use only LiPo 9V (min 500mAh) or Alkaline 6LR61 9V.
Do NOT charge Alkaline 6LR61 9V.