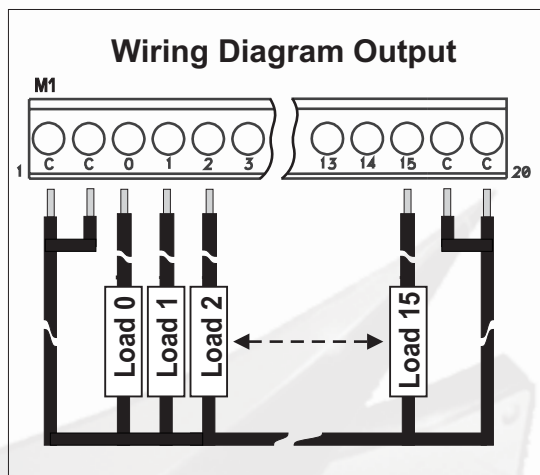


Fuse Connector Module ZL-CM16TF2 Cables and PLC I/O Modules

PLC Type	Cable Type	PLC I/O Module Type	Connector Module Type
DL305	ZL-3CBL3FRD16	D3-16TD1-2	ZL-CM16TF2
DL405	ZL-4CBL2	D4-16TA	ZL-CM16TF2
DL405	ZL-4CBL2	D4-16TD1	ZL-CM16TF2
DL405	ZL-4CBL2	D4-16TD2	ZL-CM16TF2



WARNING : WIRE ONLY ACCORDING TO WIRING DIAGRAMS SHOWN BELOW TO AVOID CAUSING DAMAGE TO THE PLC OR CONNECTOR MODULE. MATCH THE CORRECT COMBINATION OF CABLE, PLC I/O MODULE, AND CONNECTOR MODULE AS SHOWN.

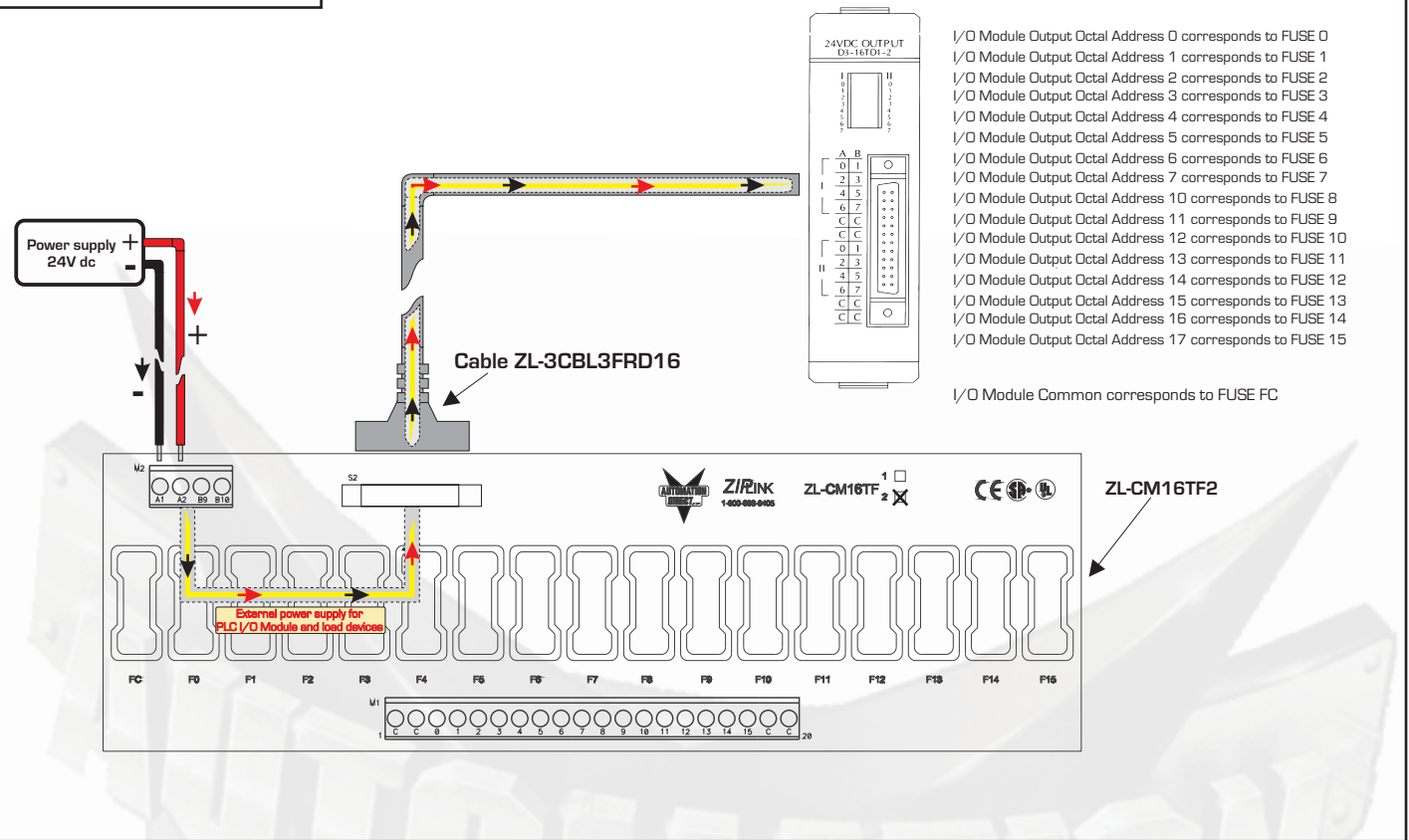
Fuse Installation And Removal

REMOVAL

INSTALLATION

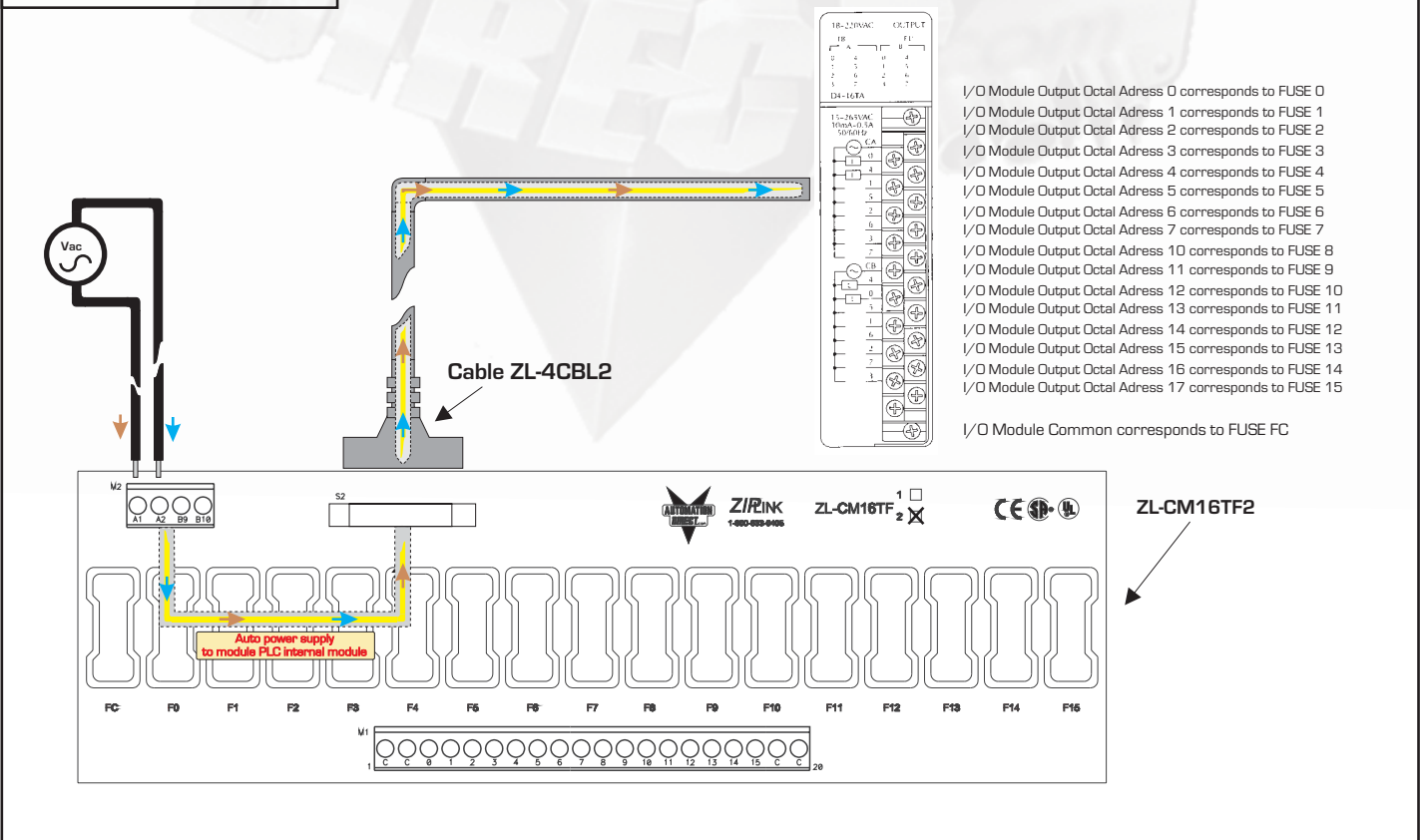
Wiring Diagram power supply and cable

PLC DL 305 Type D3-16TD1-2
DC Output I/O Module



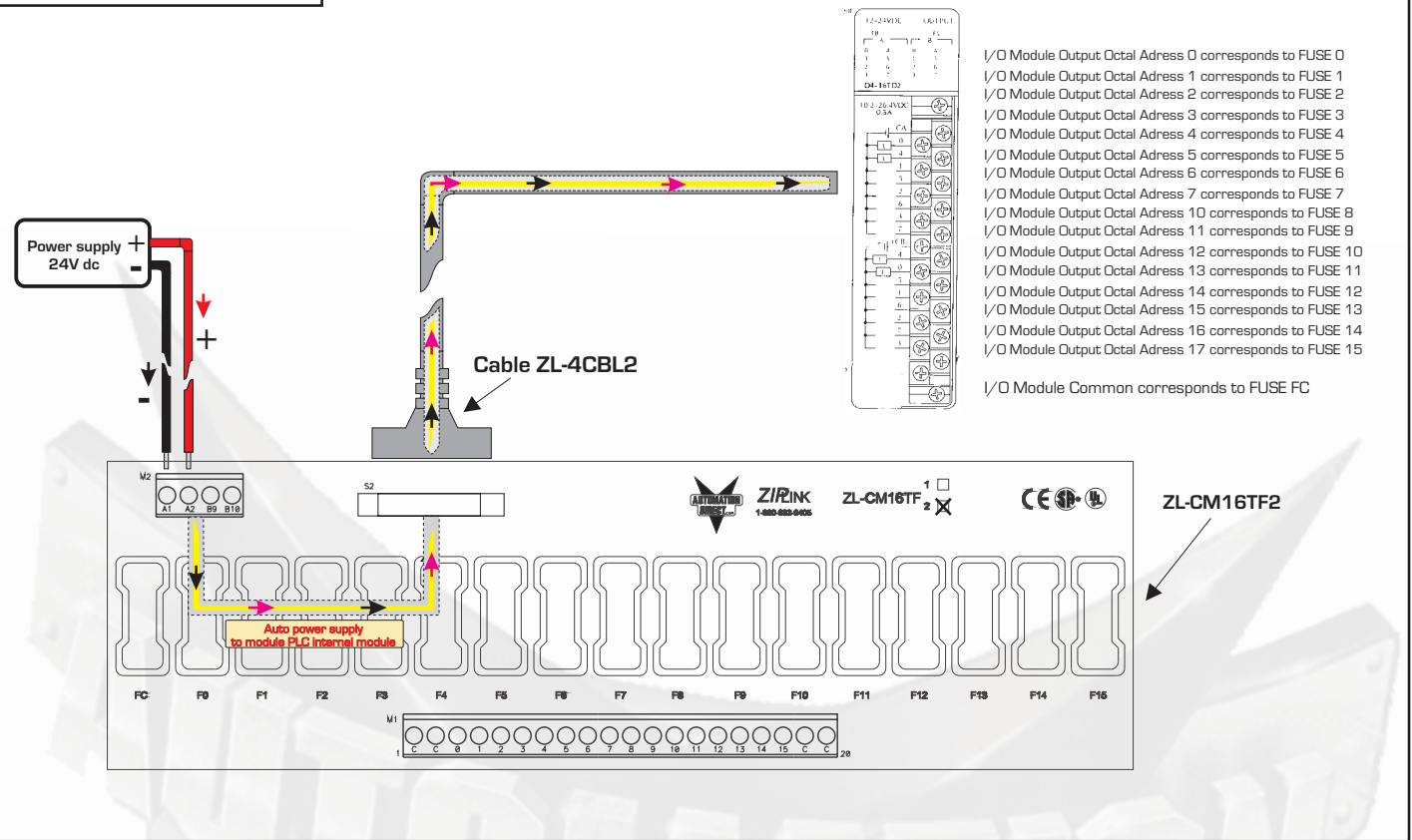
Wiring Diagram power supply and cable

PLC DL 405 Type D4-16TA
AC Output I/O Module



Wiring Diagram power supply and cable

PLC DL 405 Type D4-16TD1
DC Output I/O Module



Wiring Diagram power supply and cable

PLC DL 405 Type D4-16TD2
DC Output I/O Module

