

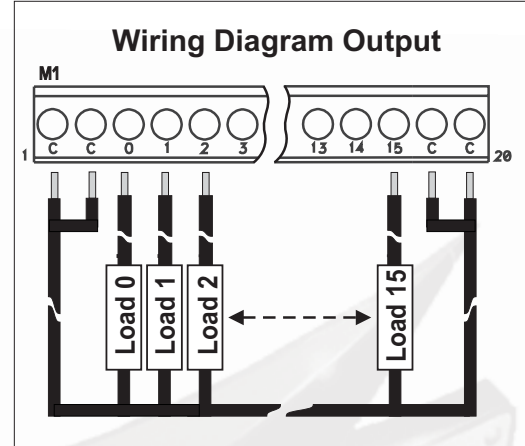


To download fullsize color .pdf Ziplink Wiring Diagrams go to www.Automationdirect.com website

ZIPLINK™
Automationdirect.com
800-633-0405

Fuse Connector Module ZL-CM16TF1 Cables and PLC I/O Modules

PLC Type	Cable Type	PLC I/O Module Type	Connector Module Type
DL205	ZL-2CBL2	D2-12TA	ZL-CM16TF1
DL205	ZL-2CBL2	D2-12TR	ZL-CM16TF1
DL205	ZL-2CBL2	D2-16TD1-2	ZL-CM16TF1
DL205	ZL-2CBL2	D2-16TD2-2	ZL-CM16TF1
DL305	ZL-3CBL1FR8	D3-08TA-1	ZL-CM16TF1
DL305	ZL-3CBL2FR16	D3-16TA-2	ZL-CM16TF1
DL305	ZL-3CBL2FR16	D3-16TD1-1	ZL-CM16TF1
DL305	ZL-3CBL2FR16	D3-16TD2	ZL-CM16TF1

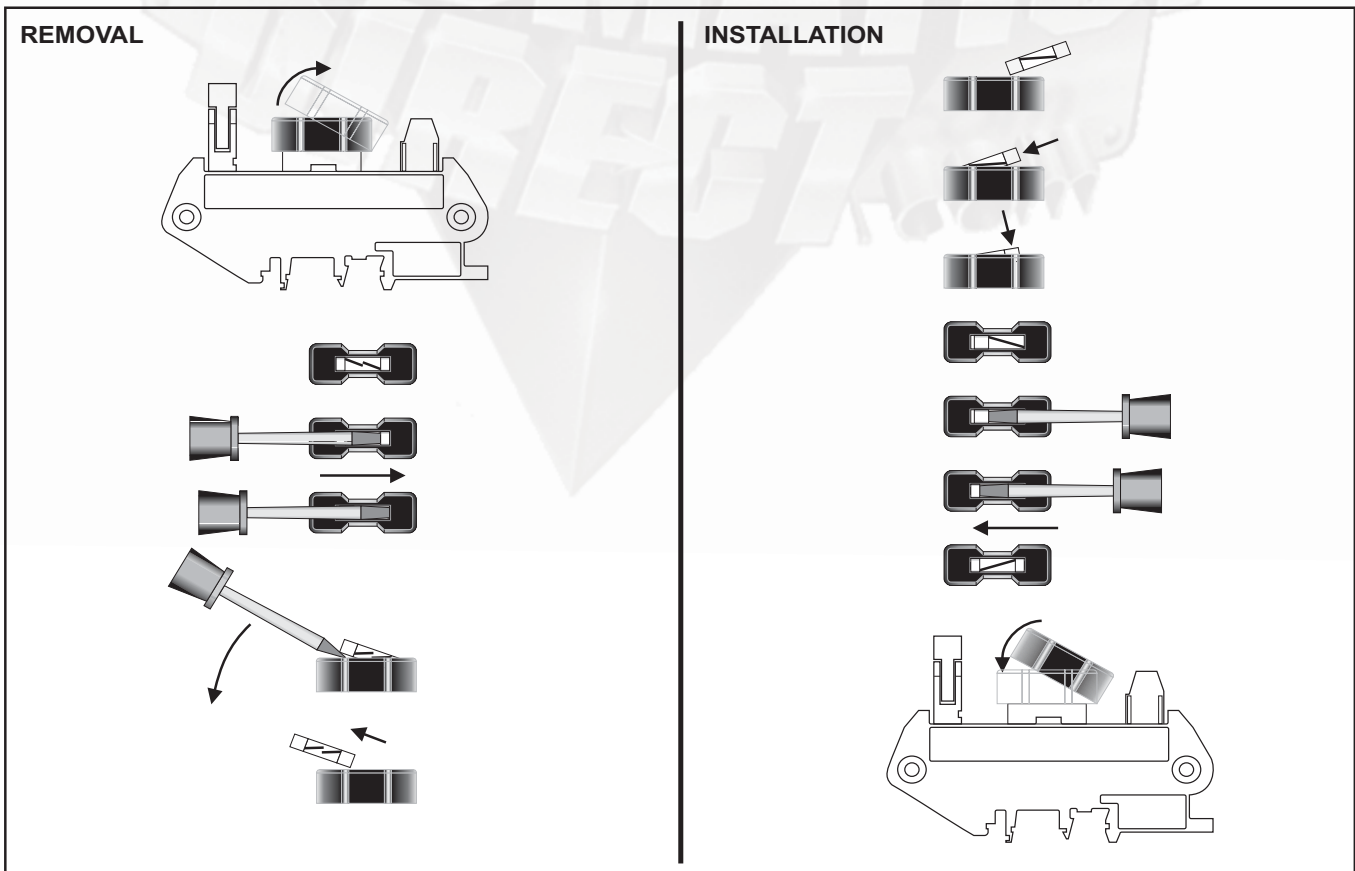


Warning: When using the D2-12TR with the ZL-CM16TF1, do not exceed 5 Amps maximum per common. Further, please note that commons are not isolated on the ZL-CM16TF1

Warning: When using the D3-16TA-2 with the ZL-CM16TF1, do not exceed 5 Amps maximum per common. Further, please note that commons are not isolated on the ZL-CM16TF1

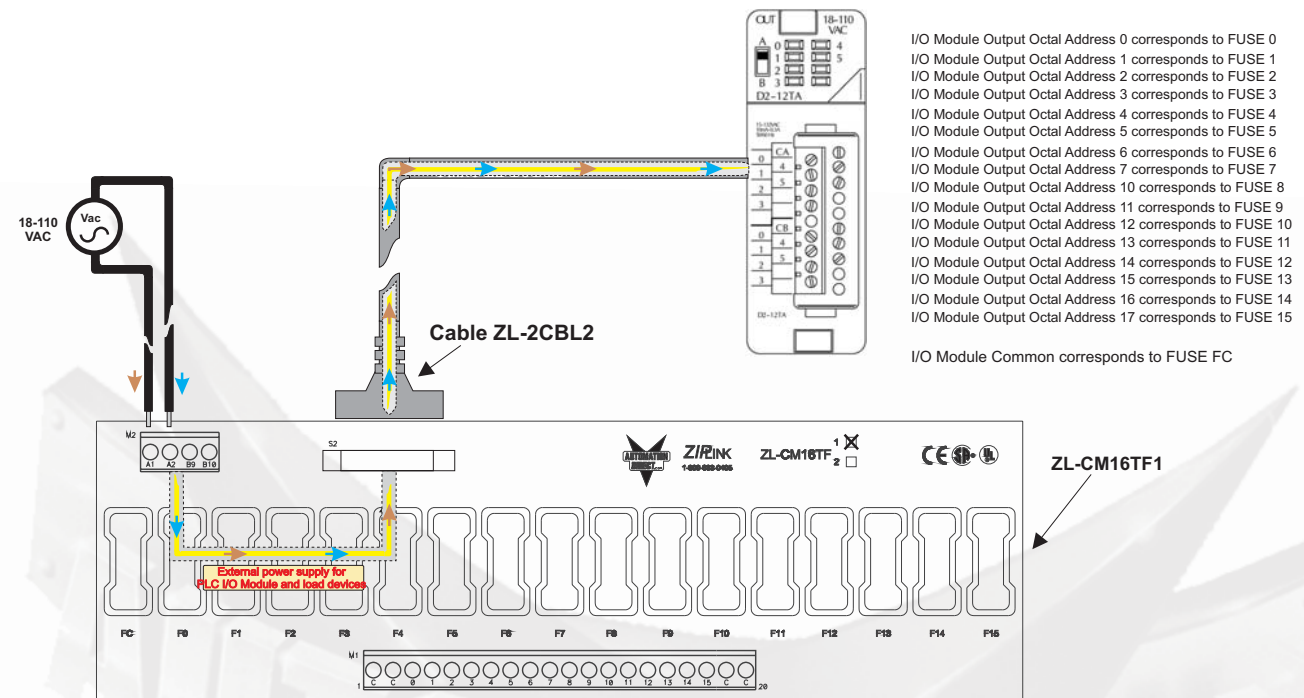
WARNING : WIRE ONLY ACCORDING TO WIRING DIAGRAMS SHOWN BELOW TO AVOID CAUSING DAMAGE TO THE PLC OR CONNECTOR MODULE. MATCH THE CORRECT COMBINATION OF CABLE, PLC I/O MODULE, AND CONNECTOR MODULE AS SHOWN.

Fuse Installation And Removal



Wiring Diagram: Power Supply and Cable

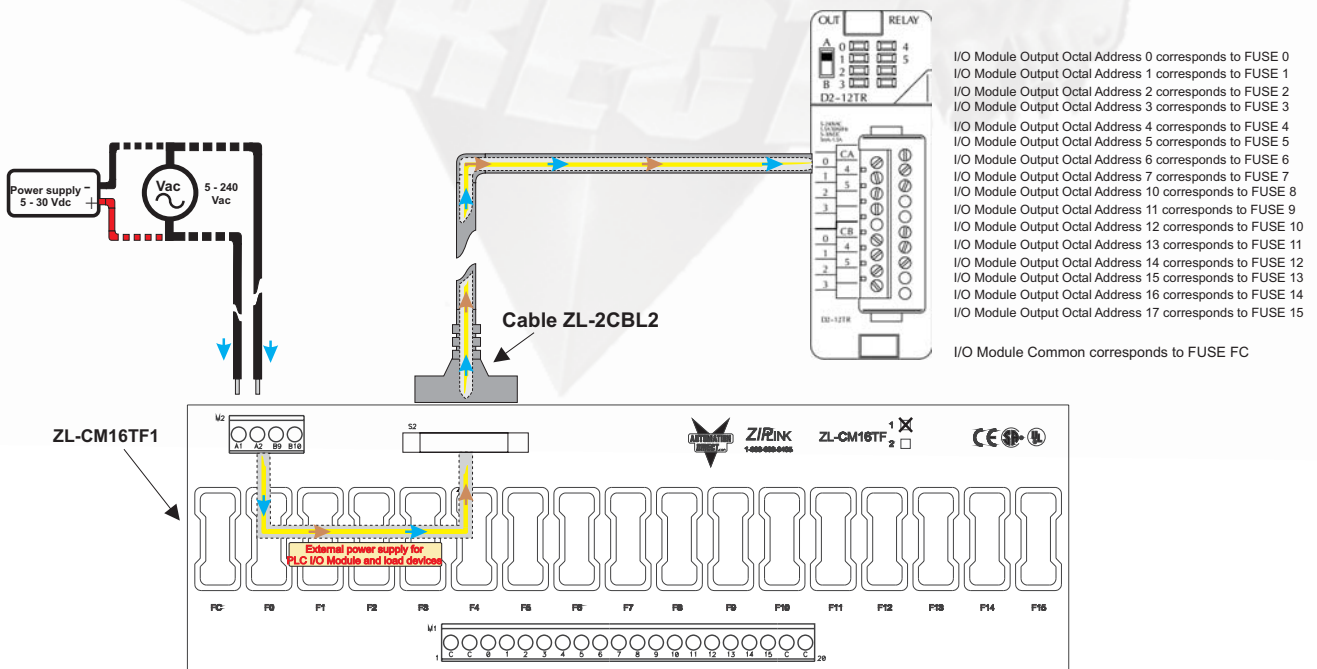
PLC DL 205 Type D2-12TA
AC Output I/O Module



Wiring Diagram: Power Supply and Cable

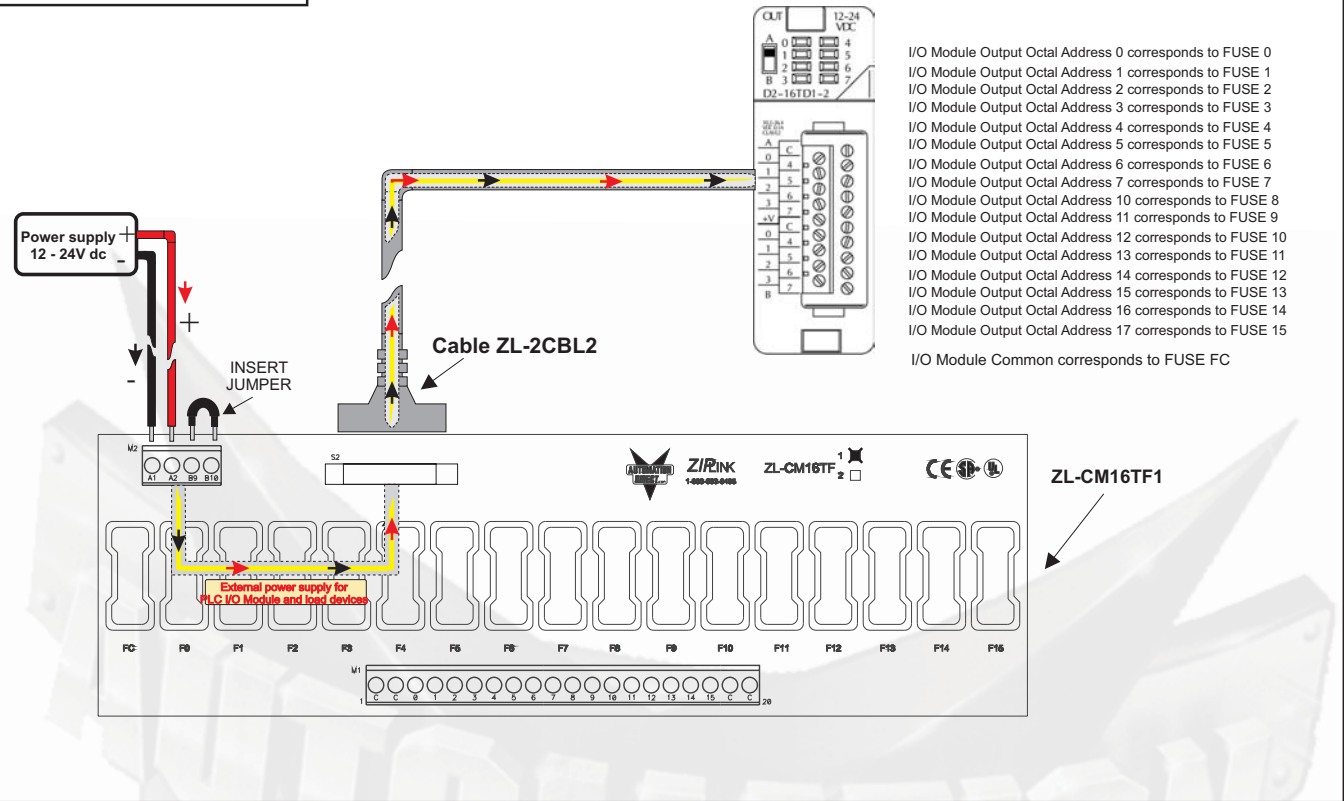
PLC DL 205 Type D2-12TR
Relay Output I/O Module

Warning: When using the D2-12TR with the ZL-CM16TF1, do not exceed 5 Amps maximum per common. Further, please note that commons are not isolated on the ZL-CM16TF1



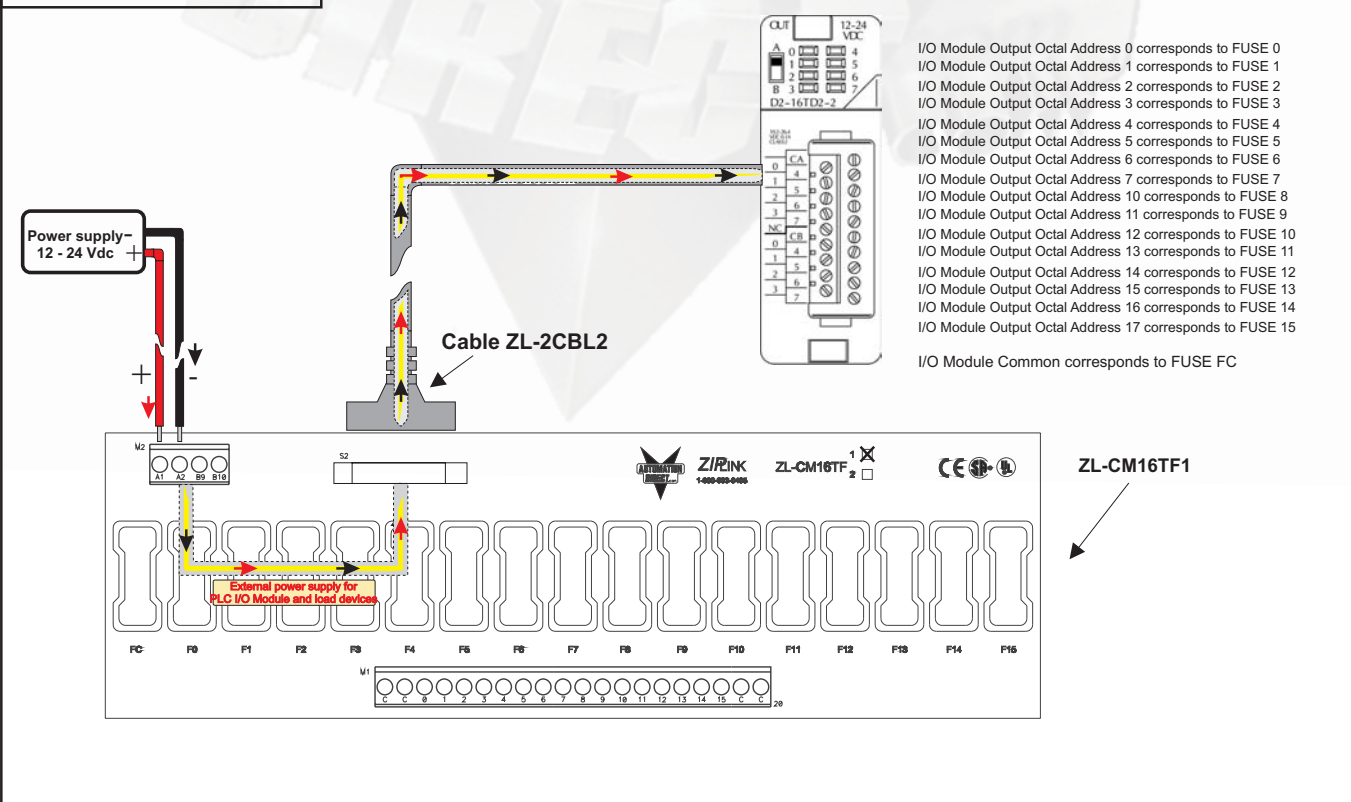
Wiring Diagram: Power Supply and Cable

PLC DL 205 Type D2-16TD1-2
DC Output I/O Module



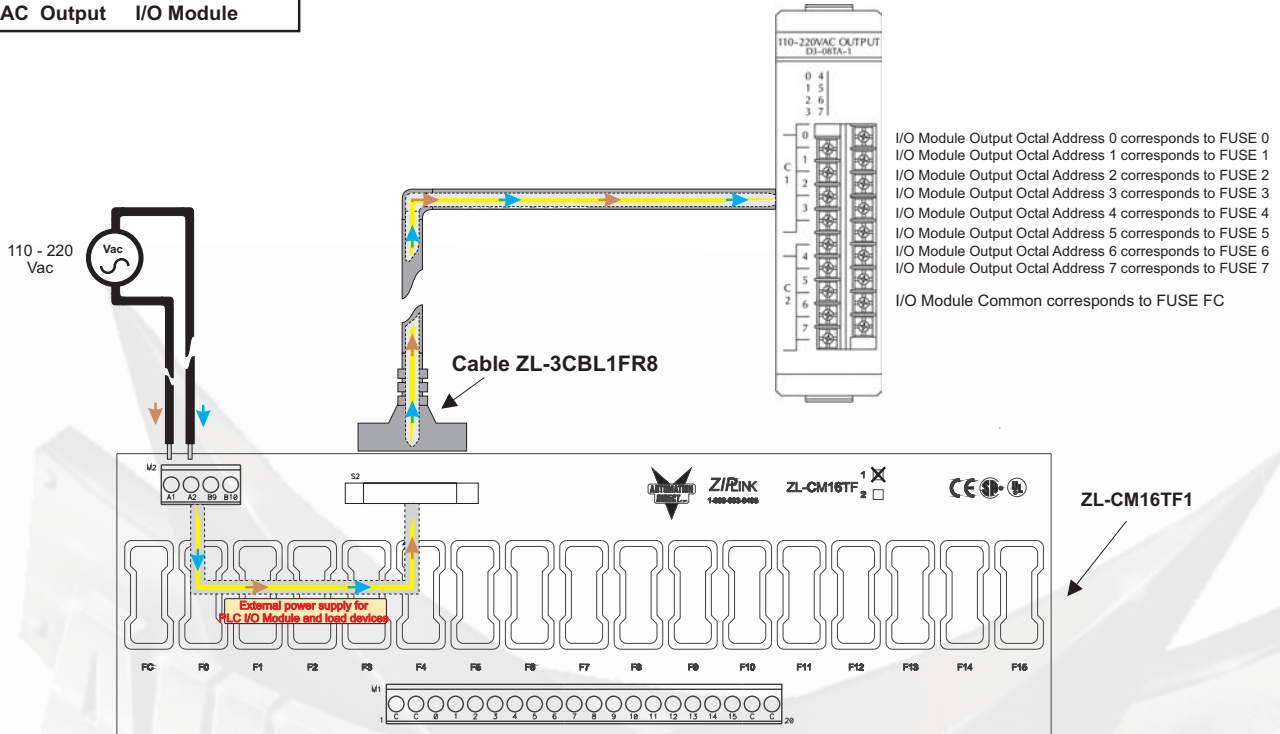
Wiring Diagram: Power Supply and Cable

PLC DL 205 Type D2-16TD2-2
DC Output I/O Module



Wiring Diagram: Power Supply and Cable

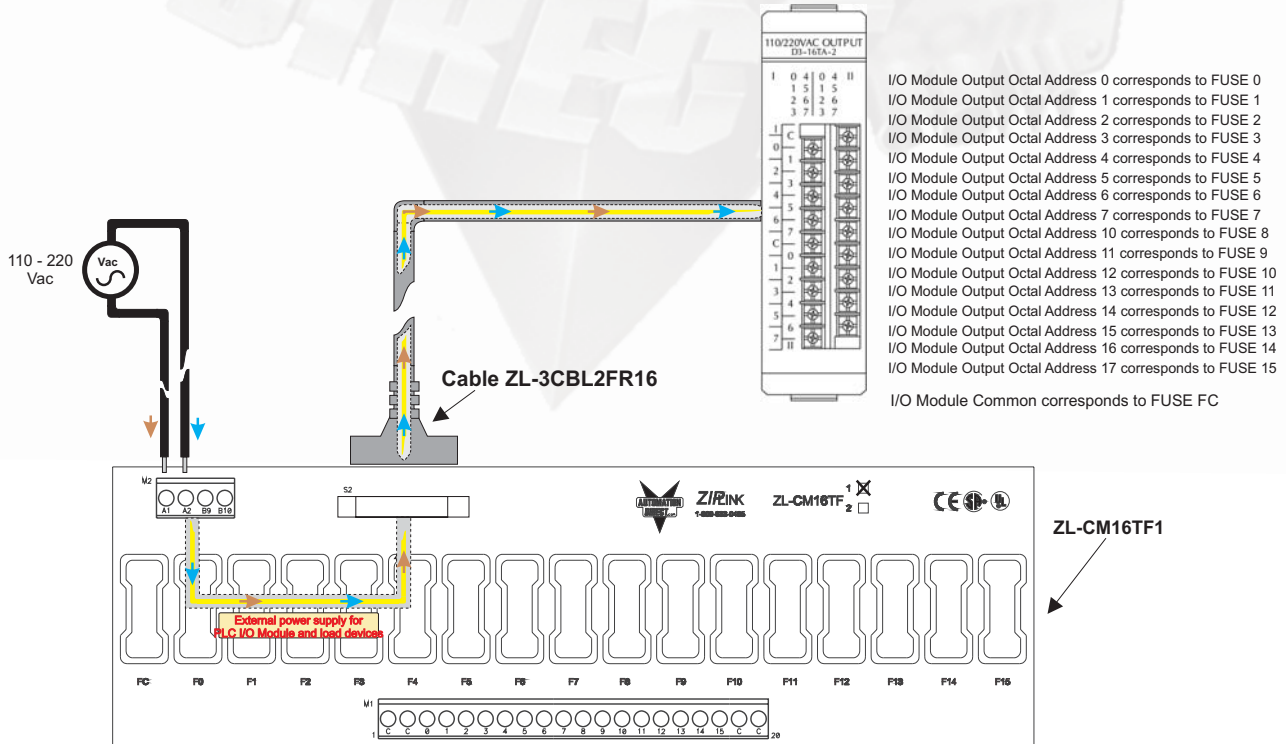
PLC DL 305 Type D3-08TA-1
AC Output I/O Module



Wiring Diagram: Power Supply and Cable

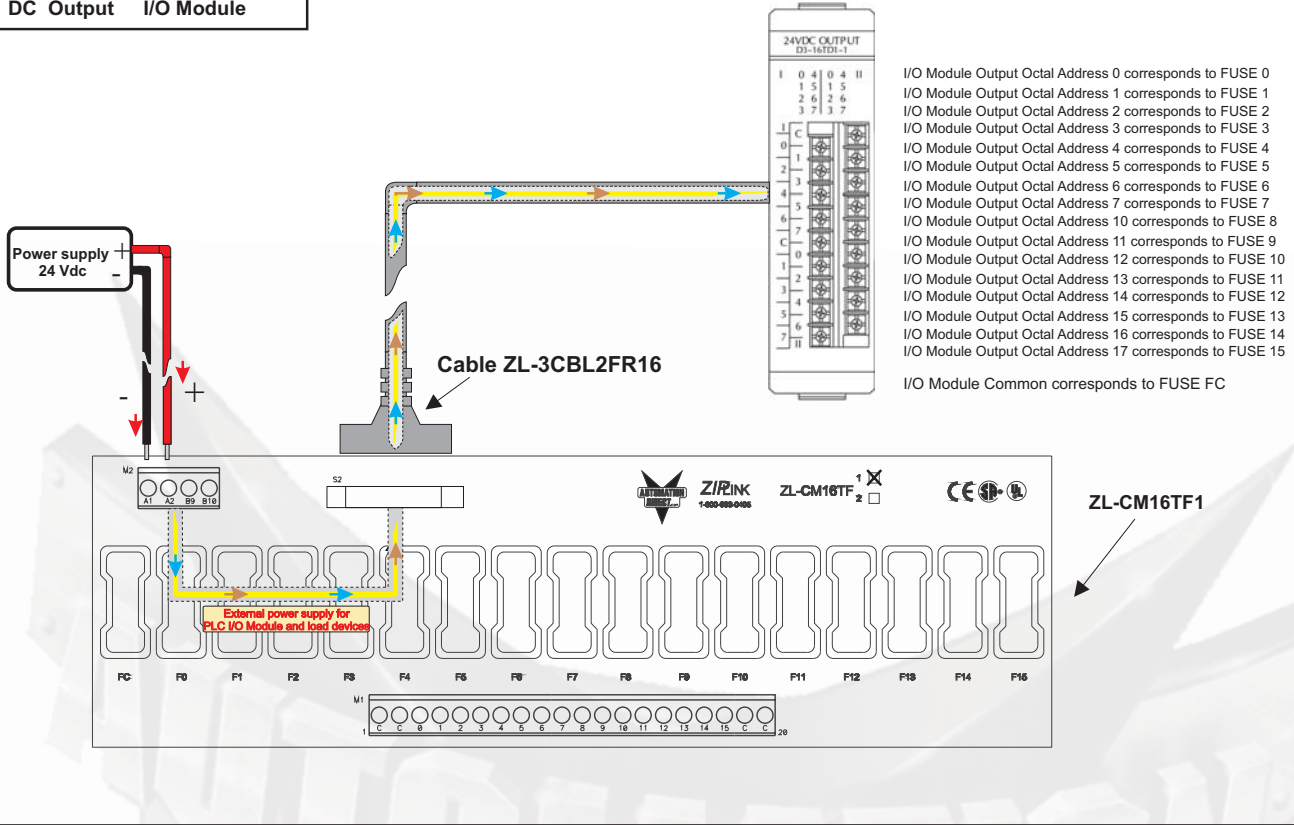
PLC DL 305 Type D3-16TA-2
AC Output I/O Module

Warning: When using the D3-16TA-2 with the ZL-CM16TF1, do not exceed 5 Amps maximum per common. Further, please note that commons are not isolated on the ZL-CM16TF1



Wiring Diagram: Power Supply and Cable

PLC DL 305 Type D3-16TD1-1
DC Output I/O Module



Wiring Diagram: Power Supply and Cable

PLC DL 305 Type D3-16TD2
DC Output I/O Module

