



To download fullsize color .pdf Ziplink Wiring Diagrams  
go to [www.Automationdirect.com](http://www.Automationdirect.com) website

**ZIPLINK™**  
Automationdirect.com

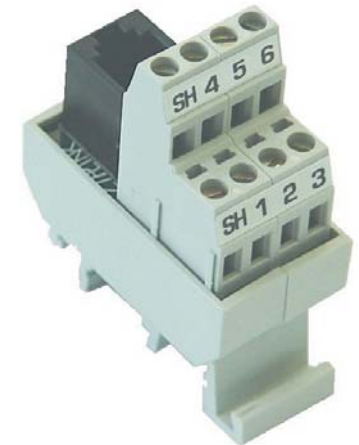
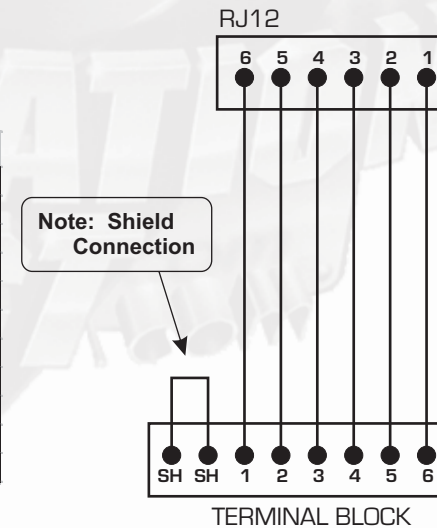
800-633-0405

## Reverse RJ12 Connector Module ZL-CMRJ12 6 Pin RJ12 to Terminal Blocks

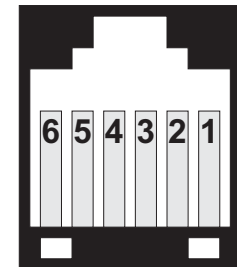
Type:  
**ZL-CMRJ12**

Miscellaneous Modules	
Part Number	ZL-CMRJ12
Description	RJ12 connector module to terminal blocks
Approvals	CE
Voltage Rating	0-24VAC/DC
Wire Range (Rated Cross Section)	14 - 22 AWG (0.2 - 2.5mm <sup>2</sup> )
Wire Strip Length	0.32"(8mm)
Operating Temperature Range	-10°C to +60°C
Maximum Current Per Channel	200mA
Number of Channels	6
Peak Power Dissipation	N/A
Dimensions (L x W x H)	0.93(23mm)x2.17(55mm)x1.85(47mm)

Wiring Diagram



RJ12 Pin-Out



Front View