



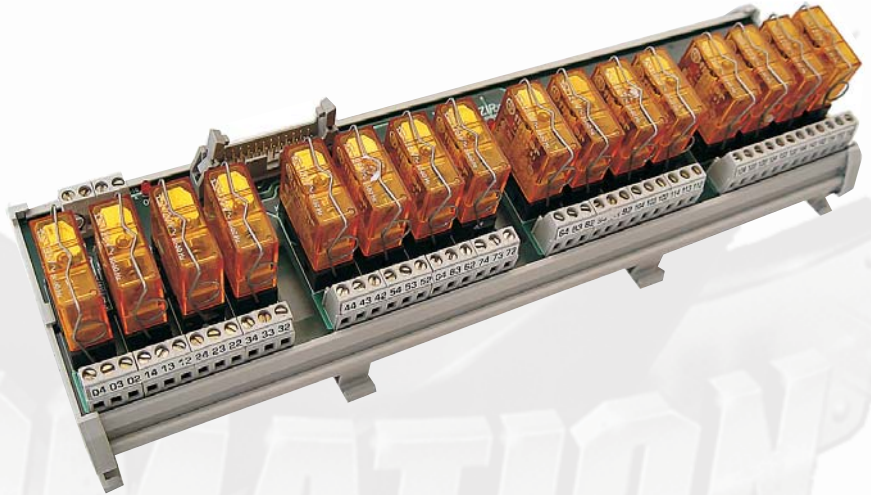
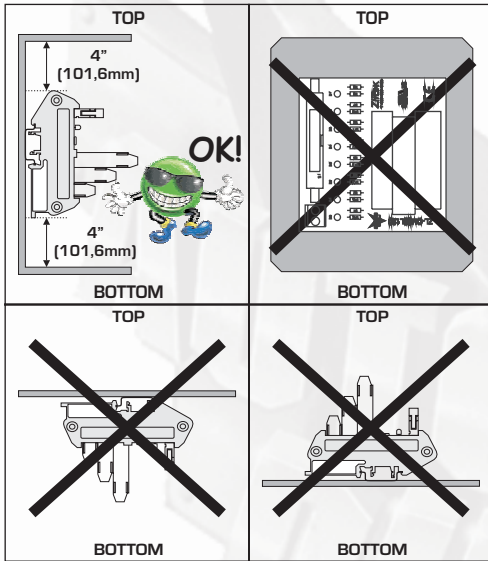
To download fullsize color .pdf Ziplink Wiring Diagrams go to www.Automationdirect.com website

ZIP LINK™
Automationdirect.com
800-633-0405

Relay Connector Module ZL-CM16RL120A Cables and PLC I/O Modules

PLC Type	Cable Type	PLC I/O Module Type	Connector Module Type
DL205	ZL-2CBL2	D2-12TA	ZL-CM16RL120A
DL305	ZL-3CBL2FR16	D3-16TA-2	ZL-CM16RL120A

Mounting Orientation:

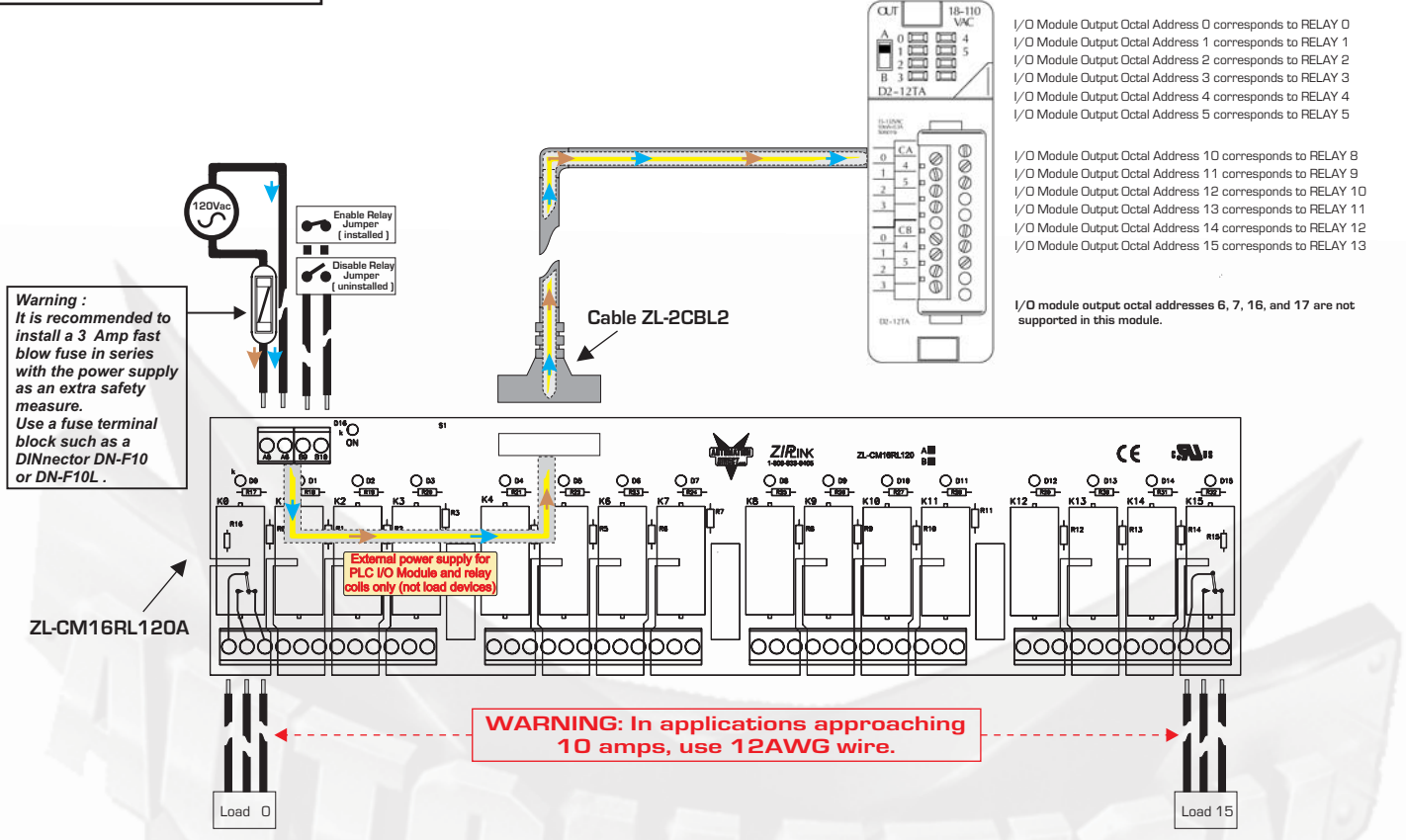


WARNING : WIRE ONLY ACCORDING TO WIRING DIAGRAMS SHOWN BELOW TO AVOID CAUSING DAMAGE TO THE PLC OR CONNECTOR MODULE. MATCH THE CORRECT COMBINATION OF CABLE, PLC I/O MODULE, AND CONNECTOR MODULE AS SHOWN.

AC-Powered Relay Modules	
Part Number	ZL-CM16RL120A
Description	16-channel Relay module with LEDs, 120VAC, 20-pin IDC
Approvals	UL,CUL,CE
Input Voltage	88-130VAC 50-60HZ
Input Current for channel	60 mA
Material Contact	Ag/Ni
Contact Type	1 Form C (SPDT)
Contact Voltage (per point)	250VAC / 30VDC
Contact Current (per point)	10A
Coil/Contact Isolation	2000Vrms (up 1 min)
Led Indicator Current	2mA
Operate/Relase Time	15mS/10mS
Maximim Switching Voltage	400VAC
Max Power, Inductive	AC 1500VA CC 150W
Max Power, Resistive	AC 2500VA CC 300W
Minimum Load	100 mA 5VCC
Mechanical Life	2 x 10 6th
Terminal block Contact	Copper alloy, tin plating
Dimensions(l x w x h)	11.57"(294mm) 2.30"(50mm) 2.87" (73mm) with relay
Spare relay	ZL-RELAY-120
Spare Relay Clips	ZL-RELAY-KIT

Wiring Diagram: Power Supply and Cable

PLC DL205 Type D2-12TA
AC Output I/O Module



Wiring Diagram: Power Supply and Cable

PLC DL 305 Type D3-16TA-2
AC Output I/O Module

