



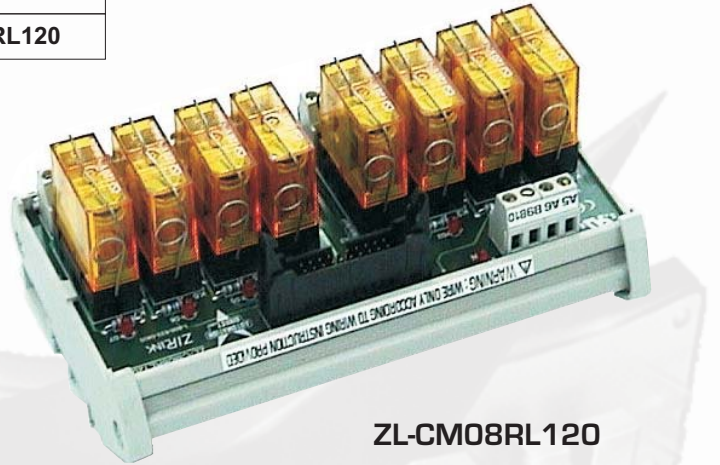
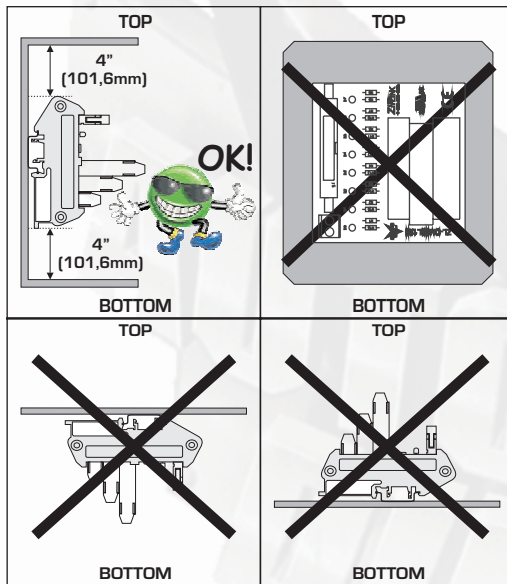
To download fullsize color .pdf Ziplink Wiring Diagrams go to www.Automationdirect.com website

ZIP LINK™
Automationdirect.com
800-633-0405

Relay Connector Module ZL-CM08RL120 Cables and PLC I/O Modules

PLC Type	Cable Type	PLC I/O Module Type	Connector Module Type
DL205	ZL-2CBL1	D2-08TA	ZL-CM08RL120
DL305	ZL-3CBL1FR8	D3-08TA-1	ZL-CM08RL120

Mounting Orientation:



ZL-CM08RL120

WARNING : WIRE ONLY ACCORDING TO WIRING DIAGRAMS SHOWN BELOW TO AVOID CAUSING DAMAGE TO THE PLC OR CONNECTOR MODULE. MATCH THE CORRECT COMBINATION OF CABLE, PLC I/O MODULE, AND CONNECTOR MODULE AS SHOWN.

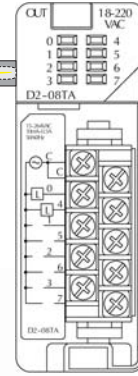
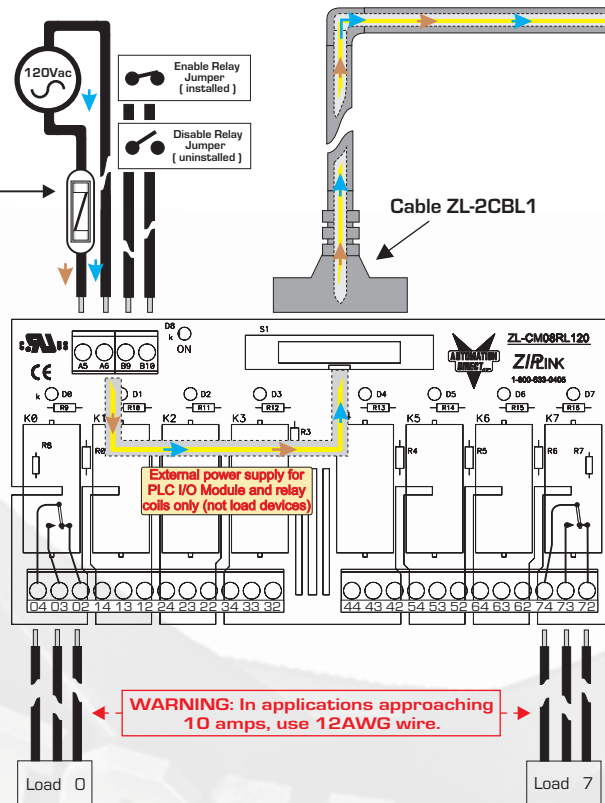
AC-Powered Relay Modules	
Part Number	ZL-CM08RL120
Description	8-channel relay module w/LEDs, 120VAC, 20-pin IDC
Approvals	UL, CUL, CE
Input Voltage	88-130VAC 50-60Hz
Total Input Current	11mA
Material Contact	Ag/Ni
Wire Range (Rated Cross Section)	14 - 30 AWG (0.2 - 2.5mm ²) 75°C min.
Contact Type	1 Form C (SPDT)
Contact Voltage (per point)	250VAC/30VDC
Contact Current (per point)	10A (25°)
Coil/Contact Isolation	2000Vrms (up to 1min)
LED Indicator Current	2mA
Operating Temperature	-10°C to +45°C
Coil Supply Voltage	120VAC ±10%, 50-60hz
Operate/Release Time	15ms/10ms
Maximum Switching Voltage	400VAC
Rated Current	10A(25°C)
Max Power, Inductive	AC 1500VA c.c 150W
Max Power, Resistive	AC 2500VA c.c 300W
Minimum Load	100Ma 5Vcc
Mechanical Life	2x10 6th
Terminal Block Contacts	Copper alloy, tin lead plating
Dimensions (L x W x H)	5.78"(147mm)x2.30"(50mm)x2.87"(73mm) (With Relay)
Spare Relays	ZL-RELAY-120
Spare Relay Clips	ZL-RELAY-KIT

Wiring Diagram: Power Supply and Cable

PLC DL205 Type D2-08TA
AC Output I/O Module

Warning :
It is recommended to install a 2 Amp fast blow fuse in series with the power supply as an extra safety measure.
Use a fuse terminal block such as a DINnector DN-F10 or DN-F10L

ZL-CM08RL120



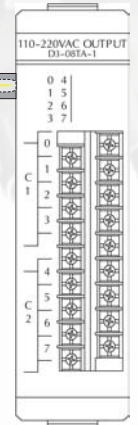
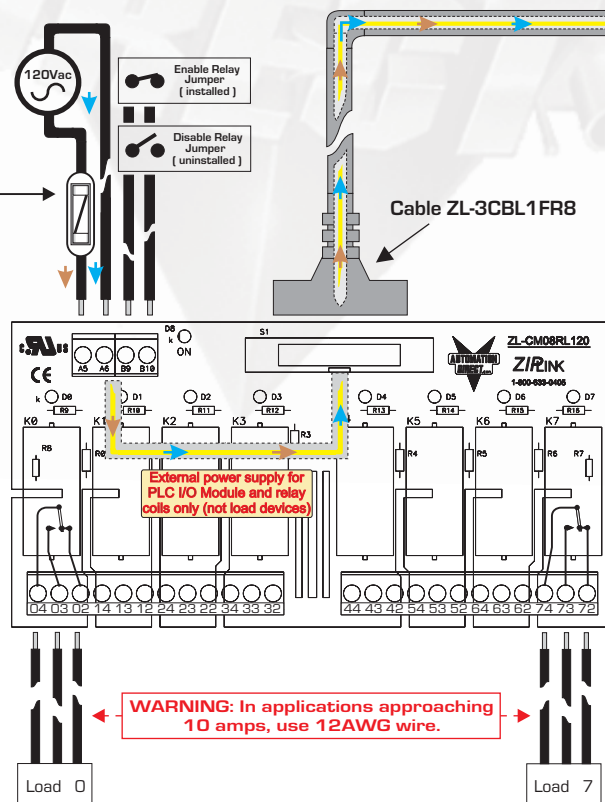
I/O Module Output: Octal Address 0 corresponds to RELAY 0
I/O Module Output: Octal Address 1 corresponds to RELAY 1
I/O Module Output: Octal Address 2 corresponds to RELAY 2
I/O Module Output: Octal Address 3 corresponds to RELAY 3
I/O Module Output: Octal Address 4 corresponds to RELAY 4
I/O Module Output: Octal Address 5 corresponds to RELAY 5
I/O Module Output: Octal Address 6 corresponds to RELAY 6
I/O Module Output: Octal Address 7 corresponds to RELAY 7

Wiring Diagram: Power Supply and Cable

PLC DL305 Type D3-08TA-1
AC Output I/O Module

Warning :
It is recommended to install a 2 Amp fast blow fuse in series with the power supply as an extra safety measure.
Use a fuse terminal block such as a DINnector DN-F10 or DN-F10L

ZL-CM08RL120



I/O Module Output: Octal Address 0 corresponds to RELAY 0
I/O Module Output: Octal Address 1 corresponds to RELAY 1
I/O Module Output: Octal Address 2 corresponds to RELAY 2
I/O Module Output: Octal Address 3 corresponds to RELAY 3
I/O Module Output: Octal Address 4 corresponds to RELAY 4
I/O Module Output: Octal Address 5 corresponds to RELAY 5
I/O Module Output: Octal Address 6 corresponds to RELAY 6
I/O Module Output: Octal Address 7 corresponds to RELAY 7