

ZL-RFU20 TB2 Pinouts			
Row	Pin	Fuse	Terminal
T O P	2, 14	-----	1
	15	Fuse 5	2
	16	Fuse 6	3
	17	Fuse 7	4
	18	Fuse 8	5
	8, 20	-----	6
	21	Fuse 13	7
	22	Fuse 14	8
B O T T O M	23	Fuse 15	9
	24	Fuse 16	10
	1, 13	-----	11
	3	Fuse 1	12
	4	Fuse 2	13
	5	Fuse 3	14
	6	Fuse 4	15
	7, 19	-----	16
9	Fuse 9	17	
10	Fuse 10	18	
11	Fuse 11	19	
12	Fuse 12	20	

Fuse Replacement

Remove

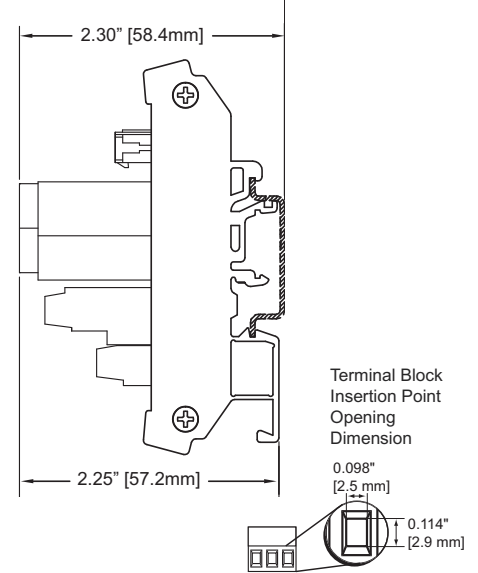
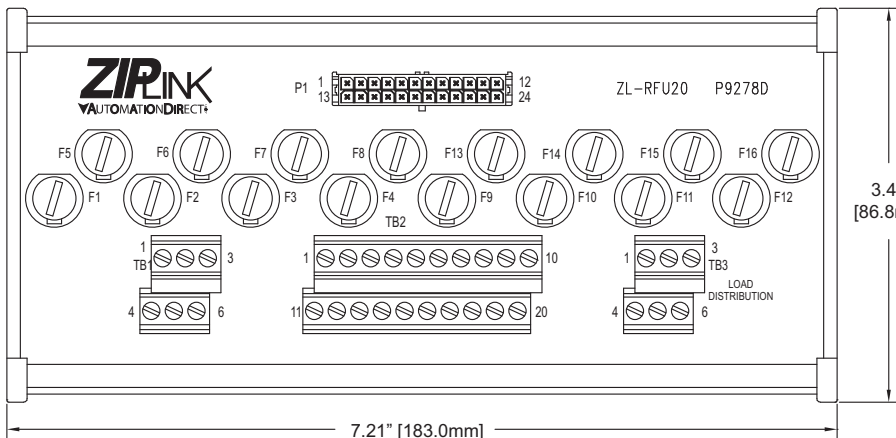
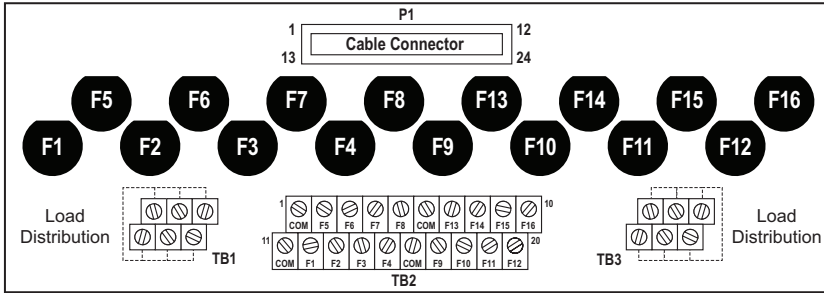
Press and turn cap CCW.

Install

Push fuse into holder

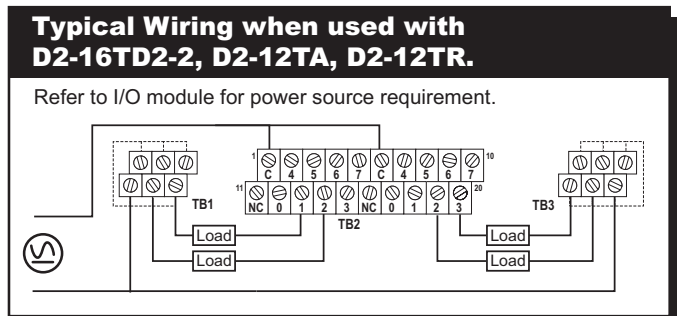
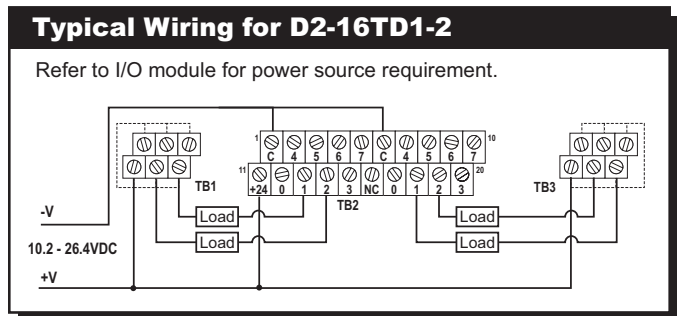
Secure

Press and turn cap CW.



Specifications	
Description*	16-point fuse connector module
Operation Voltage	0-250VAC 0-75VDC***
UL Rated Current**	1A per point
Maximum Current per Circuit	2A
Maximum Current per Module	32A
Number of Circuits	16
Field to Logic Side Isolation	1800VAC applied for 1 second
Insulation Resistance	>10M Ω @ 500VDC
Surrounding Temperature Range	32 to 140°F (0 to 60°C)
Approvals	File # E200031 UL, cUL, Class 1, Division 2, Groups A,B,C,D Hazardous Locations, CE, EN 61131-2:2007
Terminal Block Contacts	Copper alloy, tin-lead plated
Wire Range (Rated Cross Section)**	12-24AWG Solid or Stranded Copper Conductor (2.5mm ²)
Wire Strip Length	0.24-0.27" (6-7mm)
Screw Torque	4.4 in-lbs (0.5 Nm)
Fuses (Not Included)	Sixteen 5x20mm, 250V
Replacement Fuse	See Edison 5x20mm Glass Fuse section range up to a Max. 2 amp fuse
Dimensions (WxHxD)	7.21" x 3.42" x 2.25" (183mm x 86.8mm x 57.2mm)
Connector Type	Molex Micro-Fit 3.0, 24 pin connector, example receptacle 43020-2400, Pins 43031 Series, Male
Cable/Wire Clearance	0.5" (12.7mm) Required
Mounting Restrictions	None

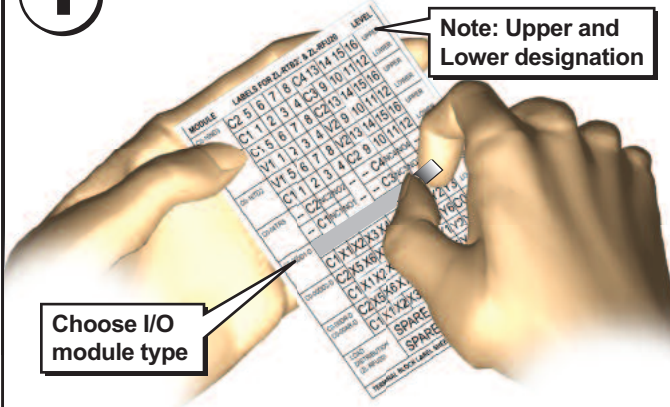
*Connecting cables are for internal wiring only.
 **Use Conductors rated 60°/75°C.
 ***UL rated 0-75VDC applies when using a DC rated fuse (not supplied), example 217 series.



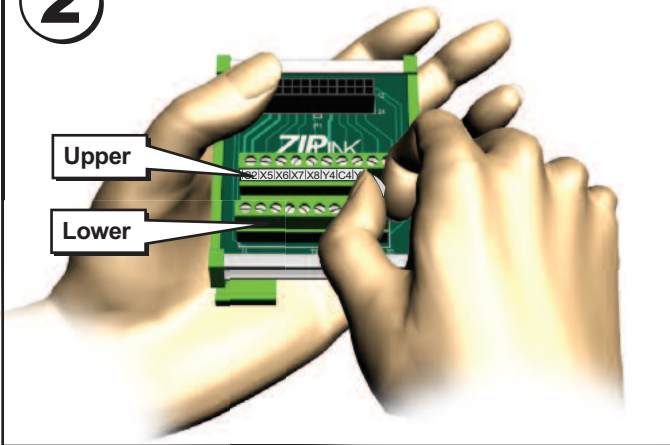
Apply ZIPLink Labels

(Supplied with ZIPLink cables)

1 Find correct label and remove from sheet

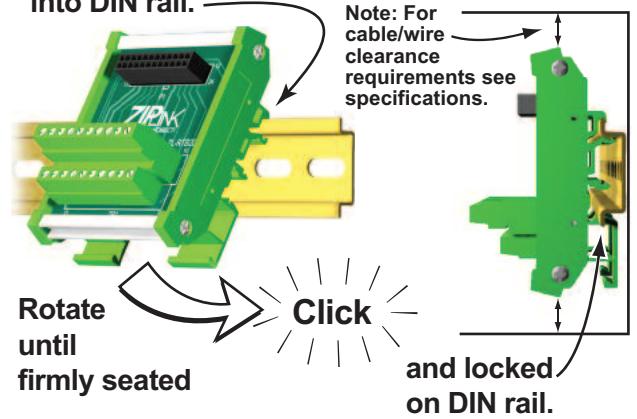


2 Apply label to designated position

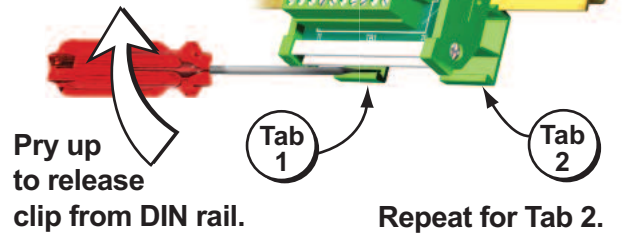


DIN Rail Installation and Removal

To install ZIPLink module, insert upper tab into DIN rail.



To remove ZIPLink module, insert screwdriver between Tab 1 and module.



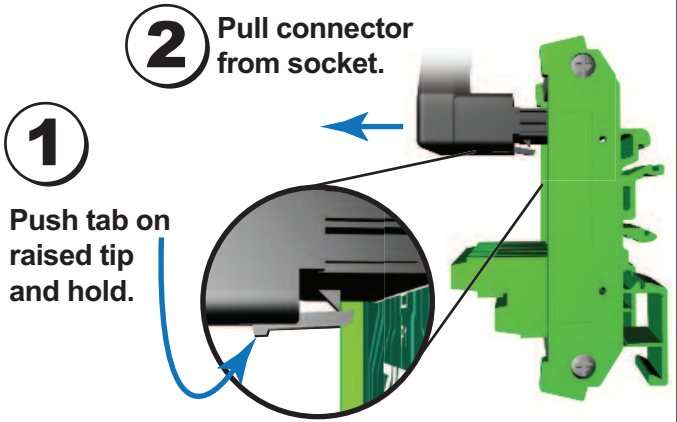
WARNING: To minimize the risk of potential safety problems, you should follow all applicable local and national codes that regulate the installation and operation of your equipment. These codes vary from area to area and it is your responsibility to determine which codes should be followed, and to verify that the equipment, installation, and operation are in compliance with the latest revision of these codes.

Equipment damage or serious injury to personnel can result from the failure to follow all applicable codes and standards. We do not guarantee the products described in this publication are suitable for your particular application, nor do we assume any responsibility for your product design, installation, or operation.

If you have any questions concerning the installation or operation of this equipment, or if you need additional information, please call Technical Support at 770-844-4200.

This publication is based on information that was available at the time it was printed. At AutomationDirect.com® we constantly strive to improve our products and services, so we reserve the right to make changes to the products and/or publications at any time without notice and without any obligation. This publication may also discuss features that may not be available in certain revisions of the product.

ZIPLink Cable Removal



HAZARD WARNING

- A. THIS EQUIPMENT IS SUITABLE FOR USE IN CLASS I, DIVISION 2/ZONE 2, GROUPS A, B, C AND D OR NON-HAZARDOUS LOCATIONS ONLY.
- B. **WARNING – EXPLOSION HAZARD** – SUBSTITUTION OF COMPONENTS MAY IMPAIR SUITABILITY FOR CLASS I, DIVISION 2/ZONE 2.
- C. **WARNING – EXPLOSION HAZARD** – DO NOT CONNECT OR DISCONNECT CONNECTORS OR OPERATE SWITCHES WHILE CIRCUIT IS LIVE UNLESS THE AREA IS KNOWN TO BE NON-HAZARDOUS.
- D. ALL MODULES USED WITH ACCESSORIES MUST USE R/C (ECBT2) MATING PLUG FOR ALL APPLICABLE MODELS. ALL MATING PLUGS SHALL HAVE SUITABLE RATINGS FOR DEVICE.