



To download fullsize color .pdf Ziplink Wiring Diagrams go to www.Automationdirect.com website

ZIPLINK™
Automationdirect.com
800-633-0405

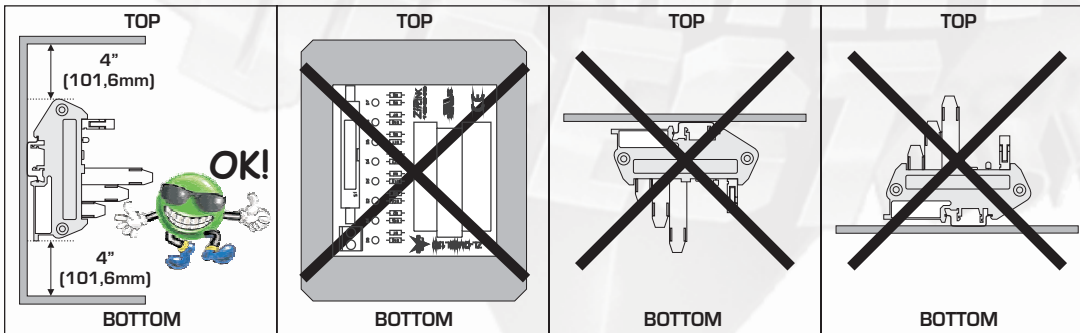
Communication Connector Module DN-25TB Cables and PLC Modules

PLC Type	Cable Type	PLC Module Type	Connector Module Type
DL205	ZL-DN25TB-CBL	D2-DCM	DN-25TB
DL305	ZL-DN25TB-CBL	D3-350CPU	DN-25TB
DL405	ZL-DN25TB-CBL	D4-DCM	DN-25TB
DL405	ZL-DN25TB-CBL	D4-430CPU	DN-25TB
DL405	ZL-DN25TB-CBL	D4-440CPU	DN-25TB
DL405	ZL-DN25TB-CBL	D4-450CPU	DN-25TB



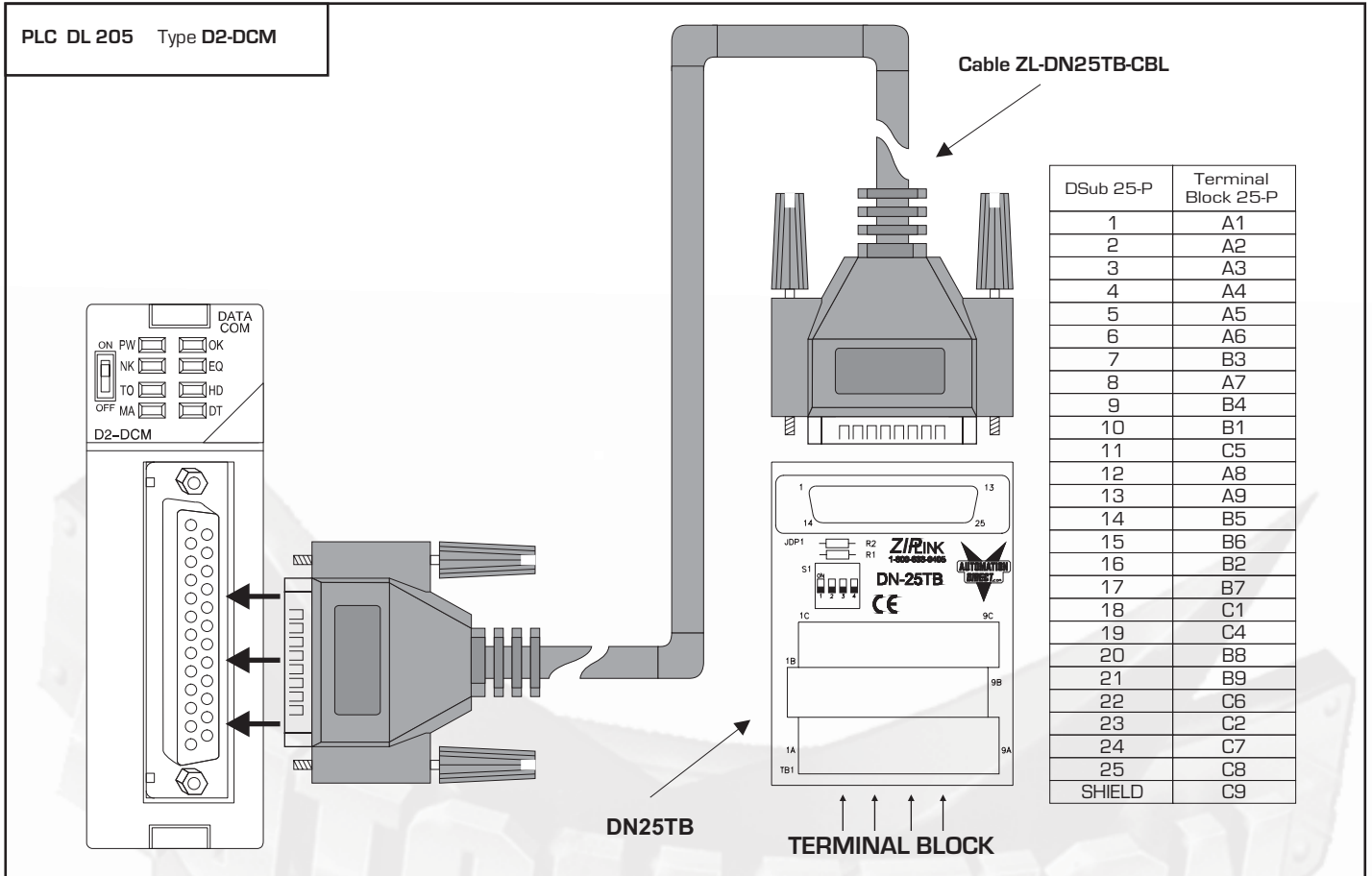
WARNING : WIRE ONLY ACCORDING TO WIRING DIAGRAMS SHOWN BELOW TO AVOID CAUSING DAMAGE TO THE PLC OR CONNECTOR MODULE. MATCH THE CORRECT COMBINATION OF CABLE, PLC I/O MODULE, AND CONNECTOR MODULE AS SHOWN.

Mounting Orientation:

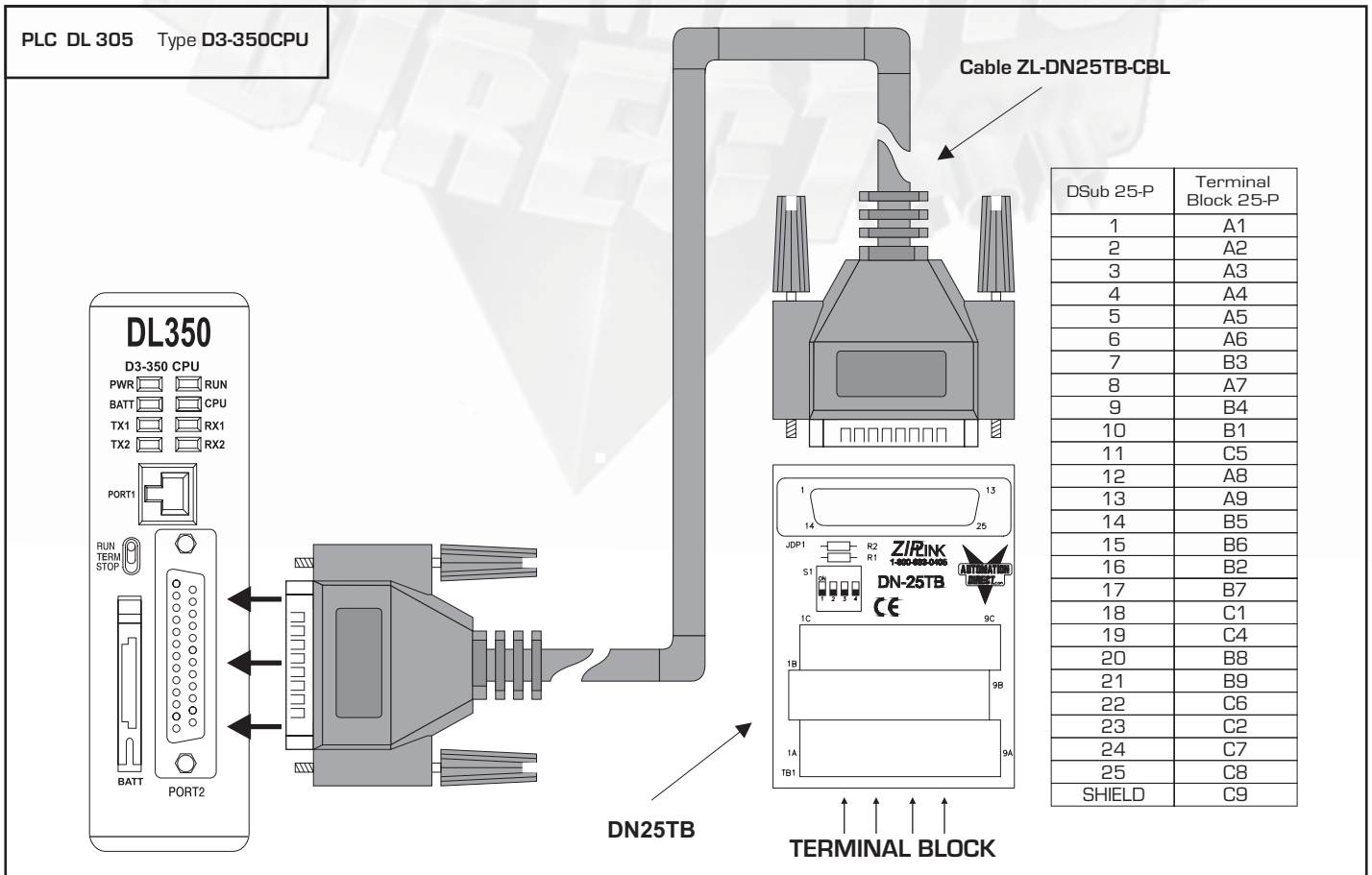


Communication Modules	
Part Number	DN-25TB
Description	350/450 PLC bottom port adapter board:Dsub to terminal blocks
Approvals	UL/CUL/CE
Communications Interface	RS232, RS422, RS485 (REMOTE I/O)
Indication: Power On/Transmit Data	N/A
Indication Receive Data	N/A
Wire Range (Rated Cross Section)	14-22AWG (0.2-2.5mm ²) 75°C min.
Wire Strip Length	0.32" (8mm)
Supply Voltage Rating	12 Vdc
Current Rating	300 mA Max.
Recommended Tightening Torque	3.5-4.5 lb-in. (0.38-0.50 Nm)
operating Temperature Range	0°C to +50°C
Terminal Block Contacts	Copper alloy, tin lead plating
Dimensions (L x W x H)	2.32"(59mm)x2.99"(76mm)x3.66"(93mm)

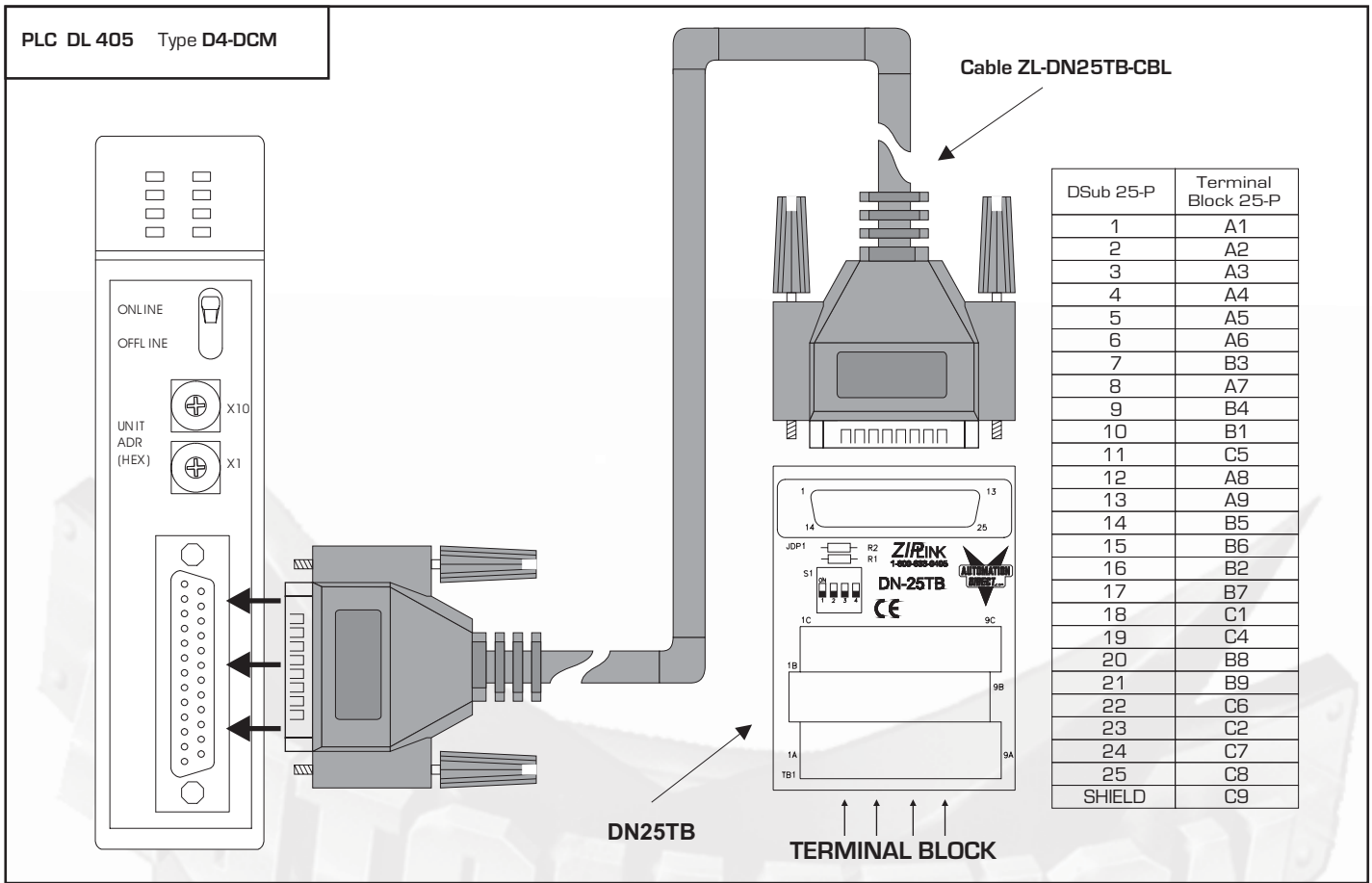
Wiring Diagram: Outputs



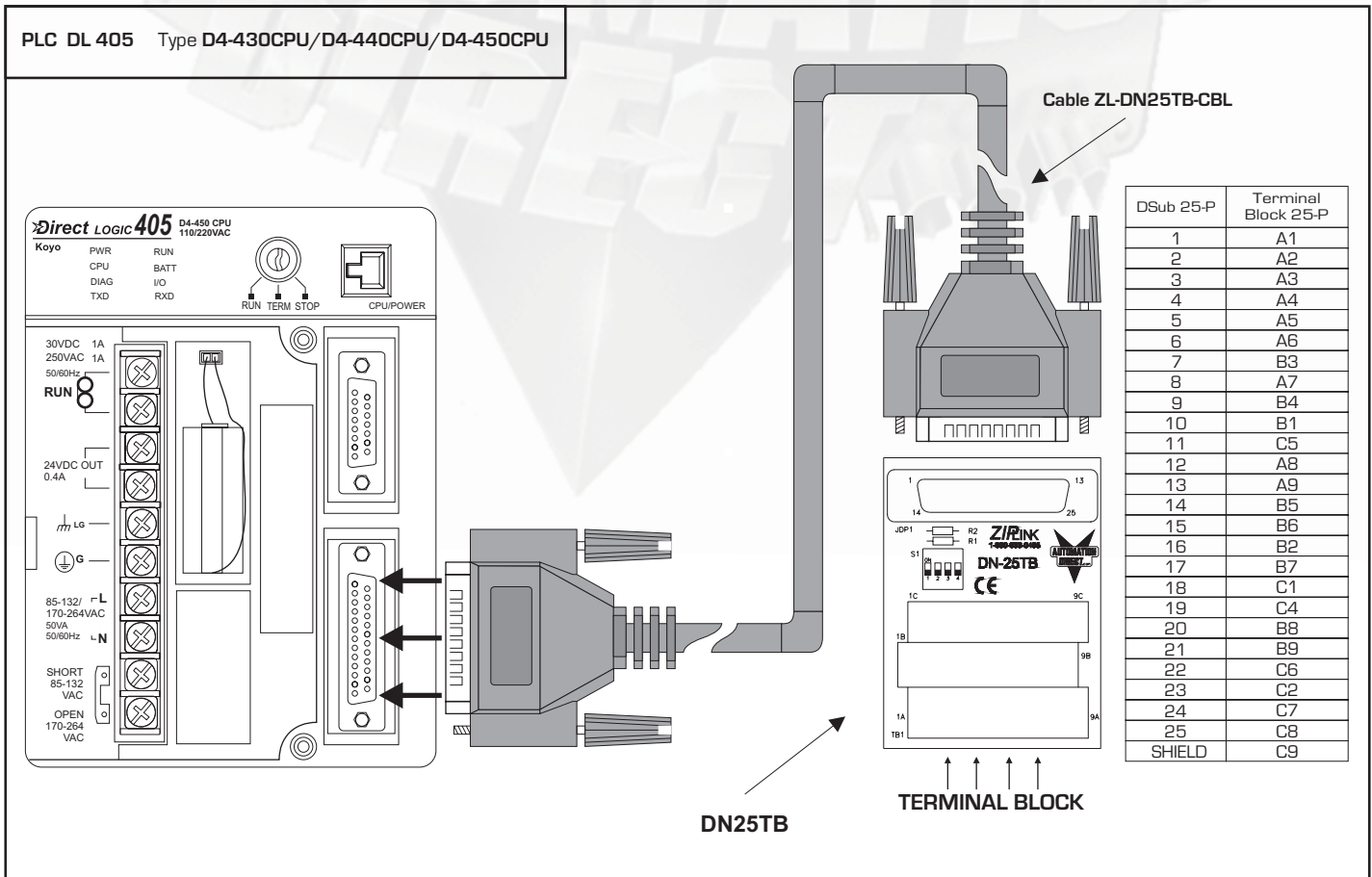
Wiring Diagram: Outputs



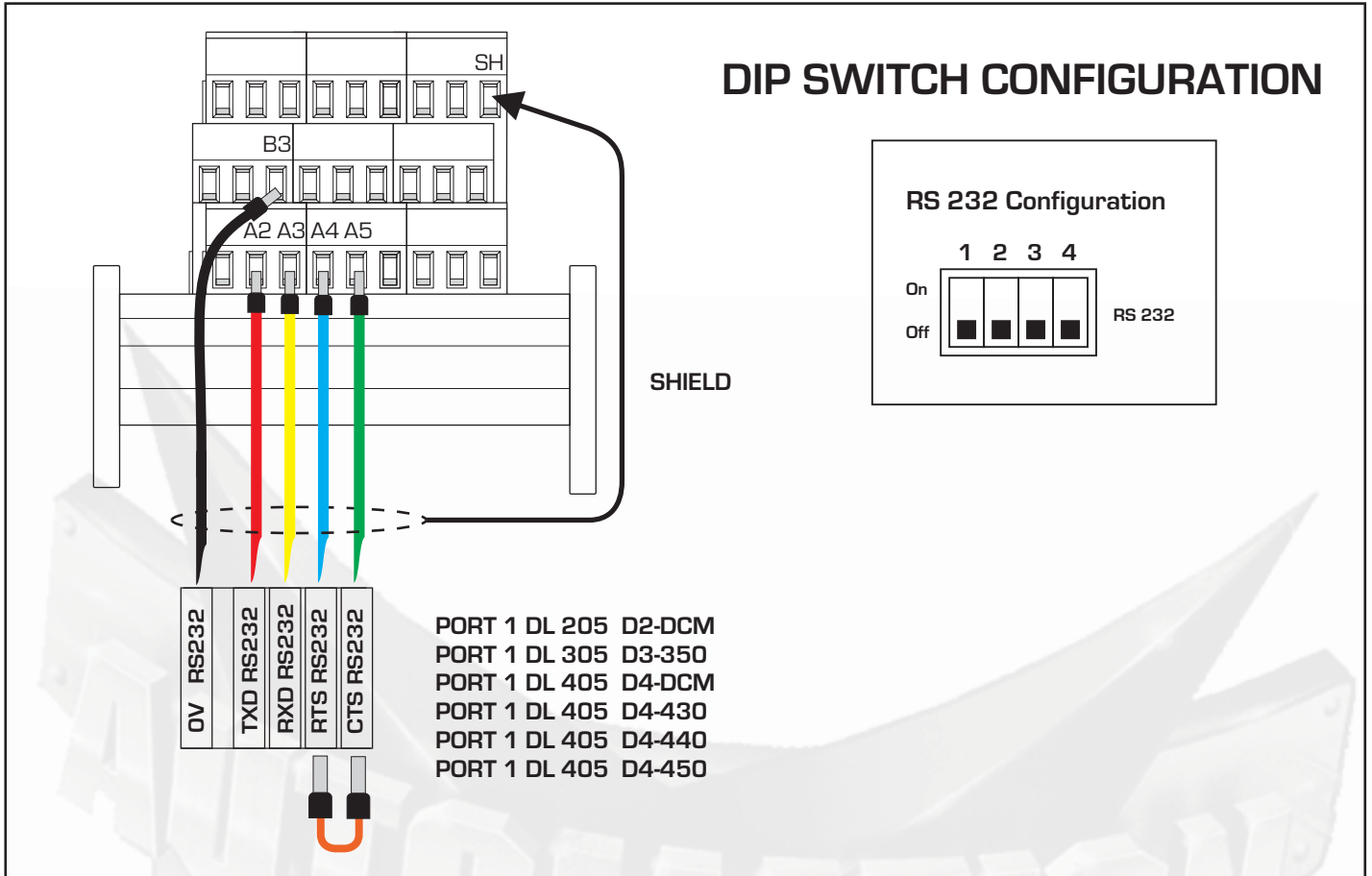
Wiring Diagram: Outputs



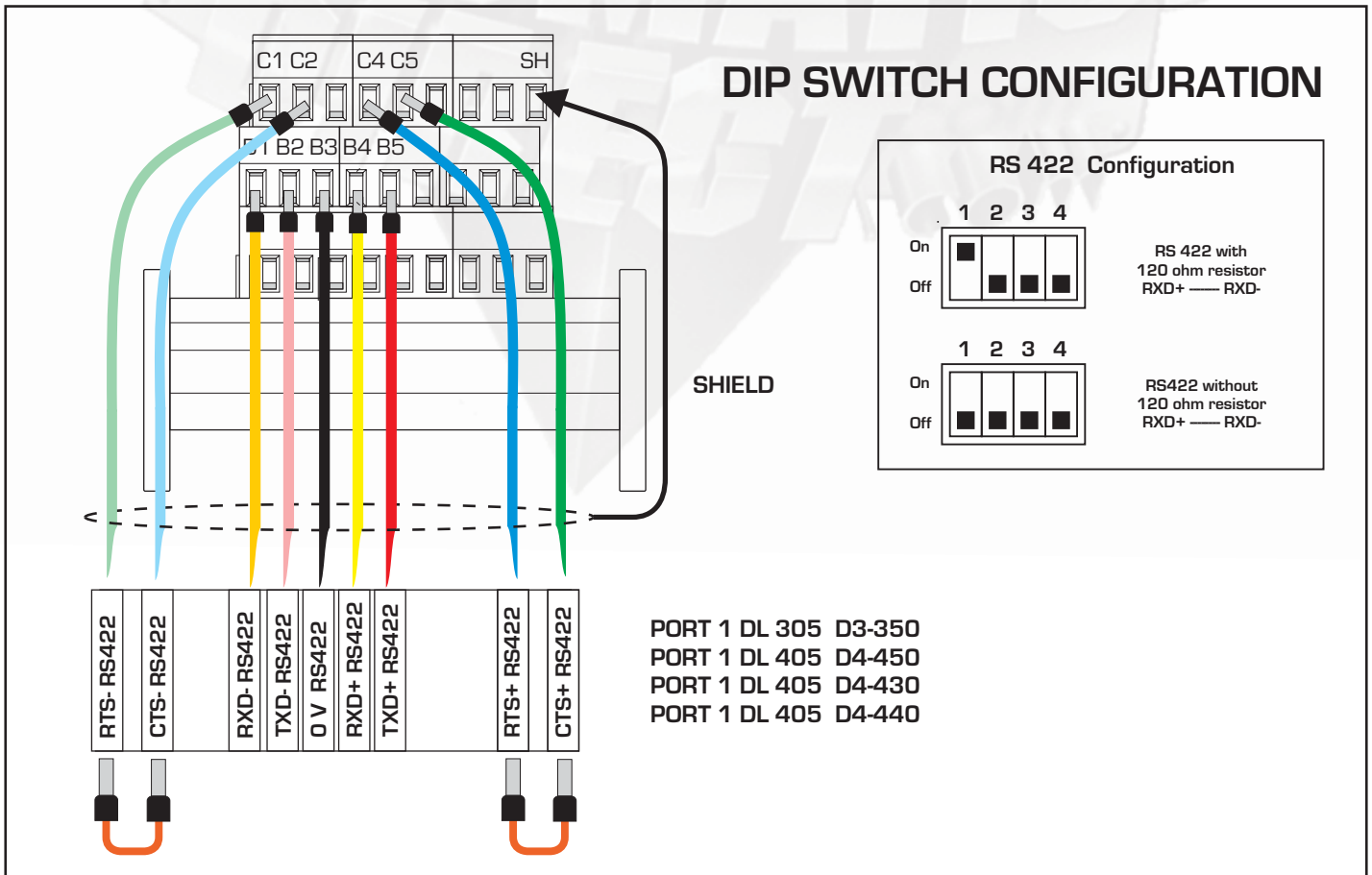
Wiring Diagram: Outputs



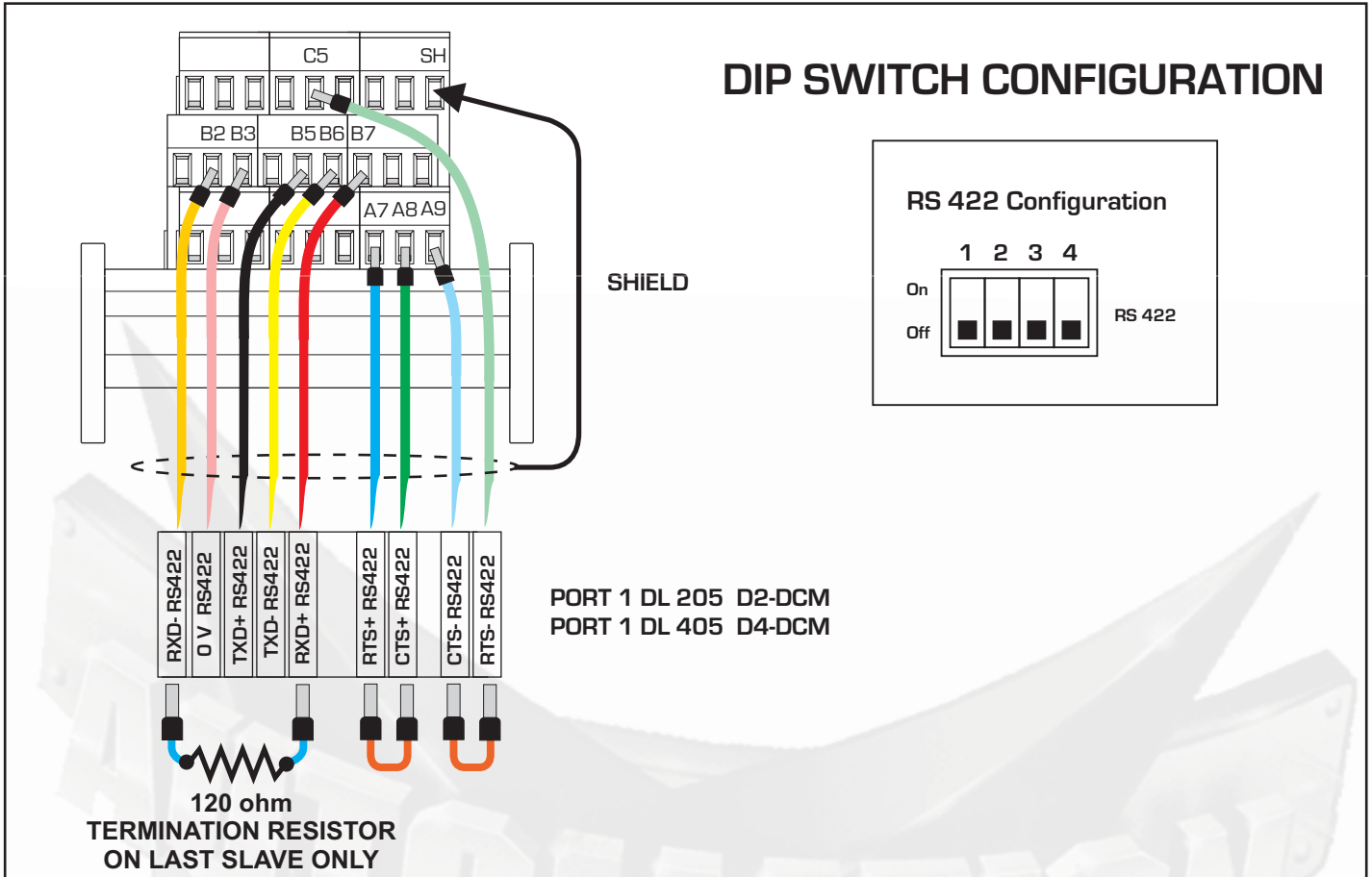
Connecting RS232



Connecting RS422



Connecting RS422



Connecting RS485 (Remote I/O)

