



To download fullsize color .pdf Ziplink Wiring Diagrams go to [www.Automationdirect.com](http://www.Automationdirect.com) website

**ZIPLINK™**  
Automationdirect.com  
800-633-0405

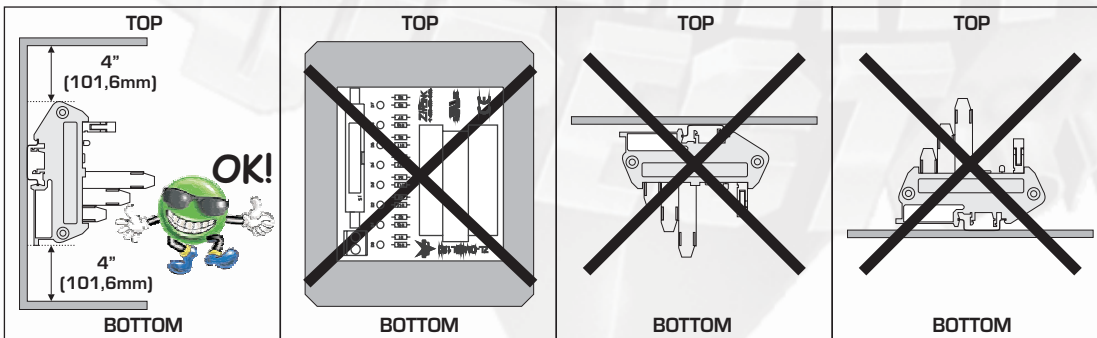
## Communication Connector Module DN-15TB Cables and PLC Modules

PLC Type	Cable Type	PLC Module Type	Connector Module Type
DL-205	ZL-DN15TB-CBL	D2-250	DN-15TB
DL-205	ZL-DN15TB-CBL	D2-250-1	DN-15TB
DL-205	ZL-DN15TB-CBL	D2-260	DN-15TB
DL-06	ZL-DN15TB-CBL	D0-06xx-x	DN-15TB



**WARNING : WIRE ONLY ACCORDING TO WIRING DIAGRAMS SHOWN BELOW TO AVOID CAUSING DAMAGE TO THE PLC OR CONNECTOR MODULE. MATCH THE CORRECT COMBINATION OF CABLE, PLC I/O MODULE, AND CONNECTOR MODULE AS SHOWN.**

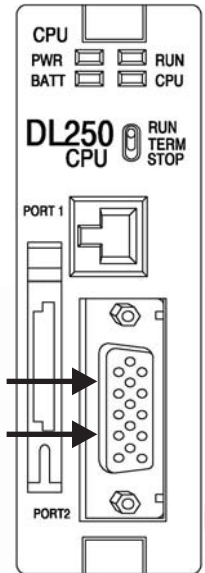
### Mounting Orientation:



Communication Modules	
Part Number	DN-15TB
Description	15 Pin HD Dsub network port adapter board:Dsub to terminal blocks
Approvals	UL/CUL/CE
Communications Interface	RS232, RS422, RS485, RS485 Remote I/O
Indication: Power On/Transmit Data	LED, red,orange
Indication Receive Data	LED, green
Wire Range (Rated Cross Section)	14-22AWG (0.2-2.5mm <sup>2</sup> )
Wire Strip Length	0.32" (8mm)
Supply Voltage Rating	12 Vdc
Current Rating	300 mA Max.
Recommended Tightening Torque	3.5-4.5 lb-in. (0.38-0.50 Nm)
Operating Temperature Range	0°C to +50°C
Terminal Block Contacts	Copper alloy, tin lead plating
Dimensions (L x W x H)	1.42"(36mm)x2.99"(76mm)x3.66"(93mm)

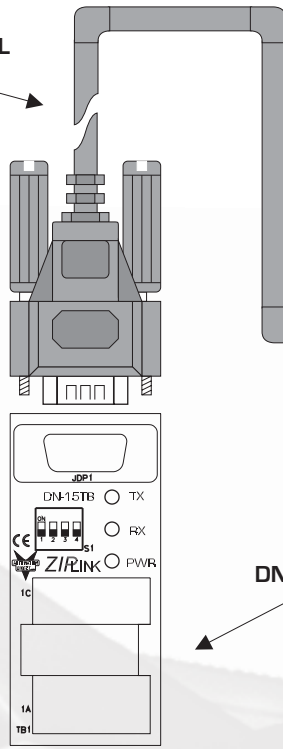
# Wiring Diagram: Outputs

PLC DL 205-DL06 Type D2-250 (-1)/D2-260/DL06



Cable ZL-DN15TB-CBL

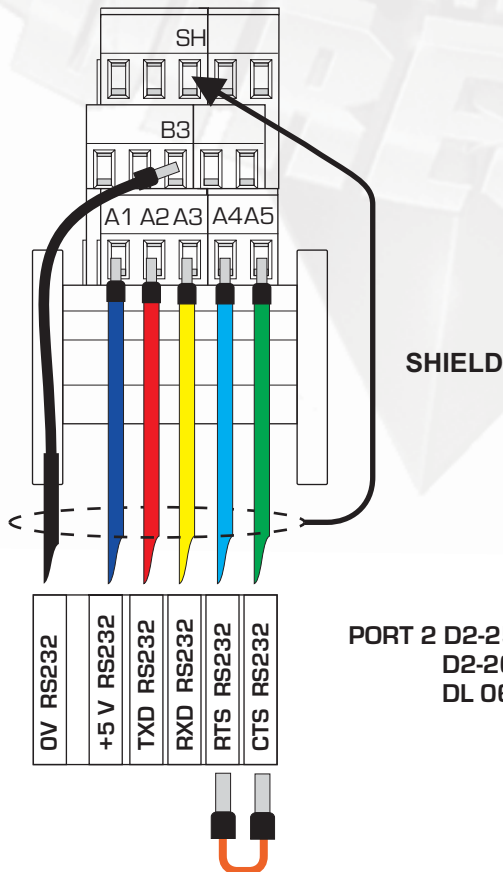
DSub 15-P	Terminal Block 15-P
1	A1
2	A2
3	A3
4	A4
5	A5
6	B1
7-8	B3
9	B5
10	B2
11	C4
12	C1
13	B4
14	C5
15	C2
SHIELD	C3



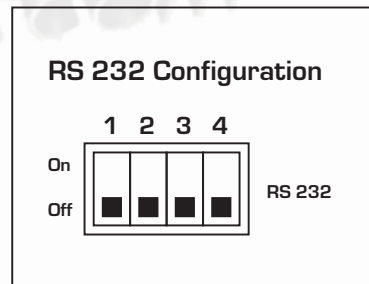
DN15TB

TERMINAL BLOCK

## Connecting RS232

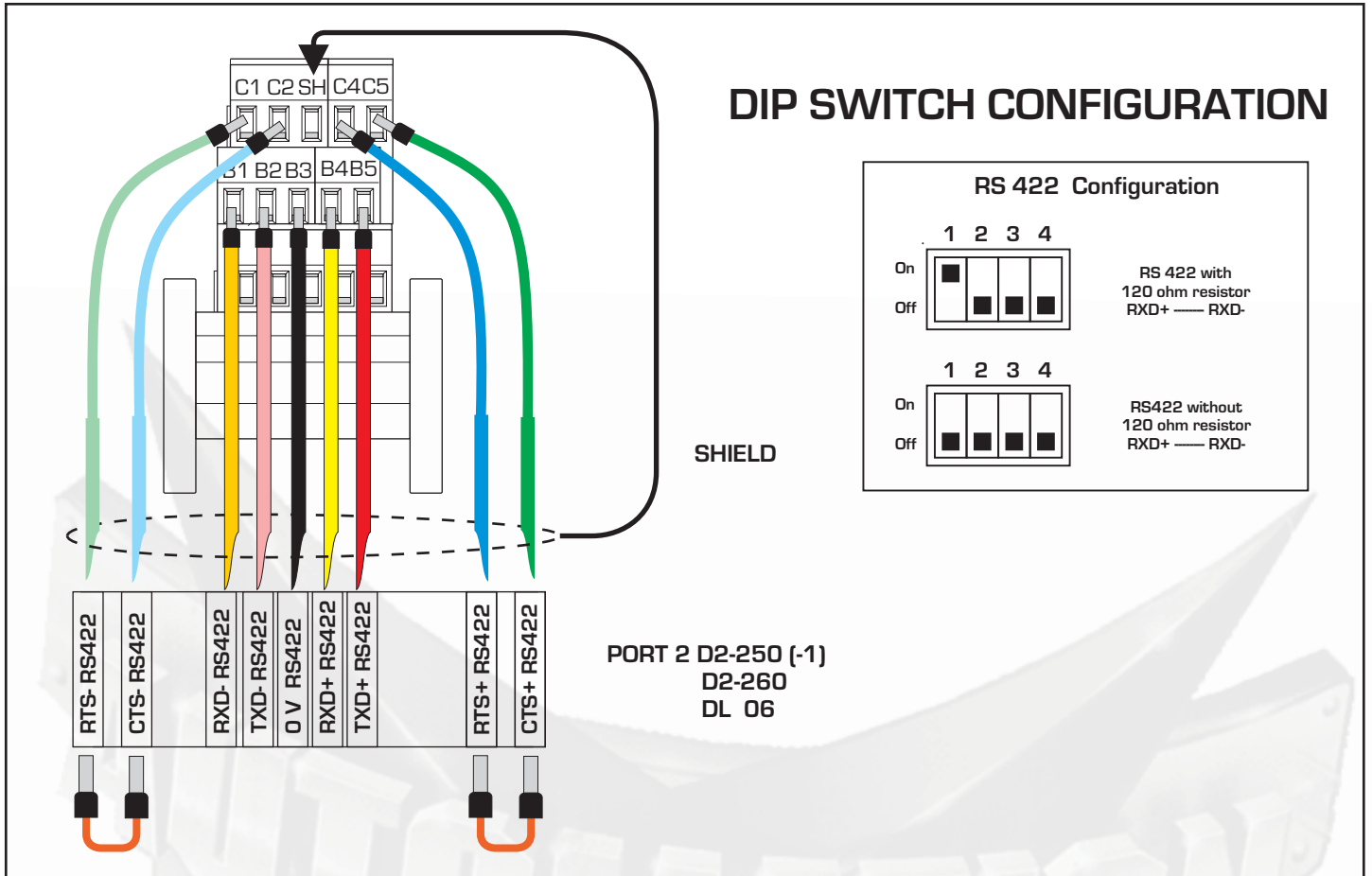


## DIP SWITCH CONFIGURATION

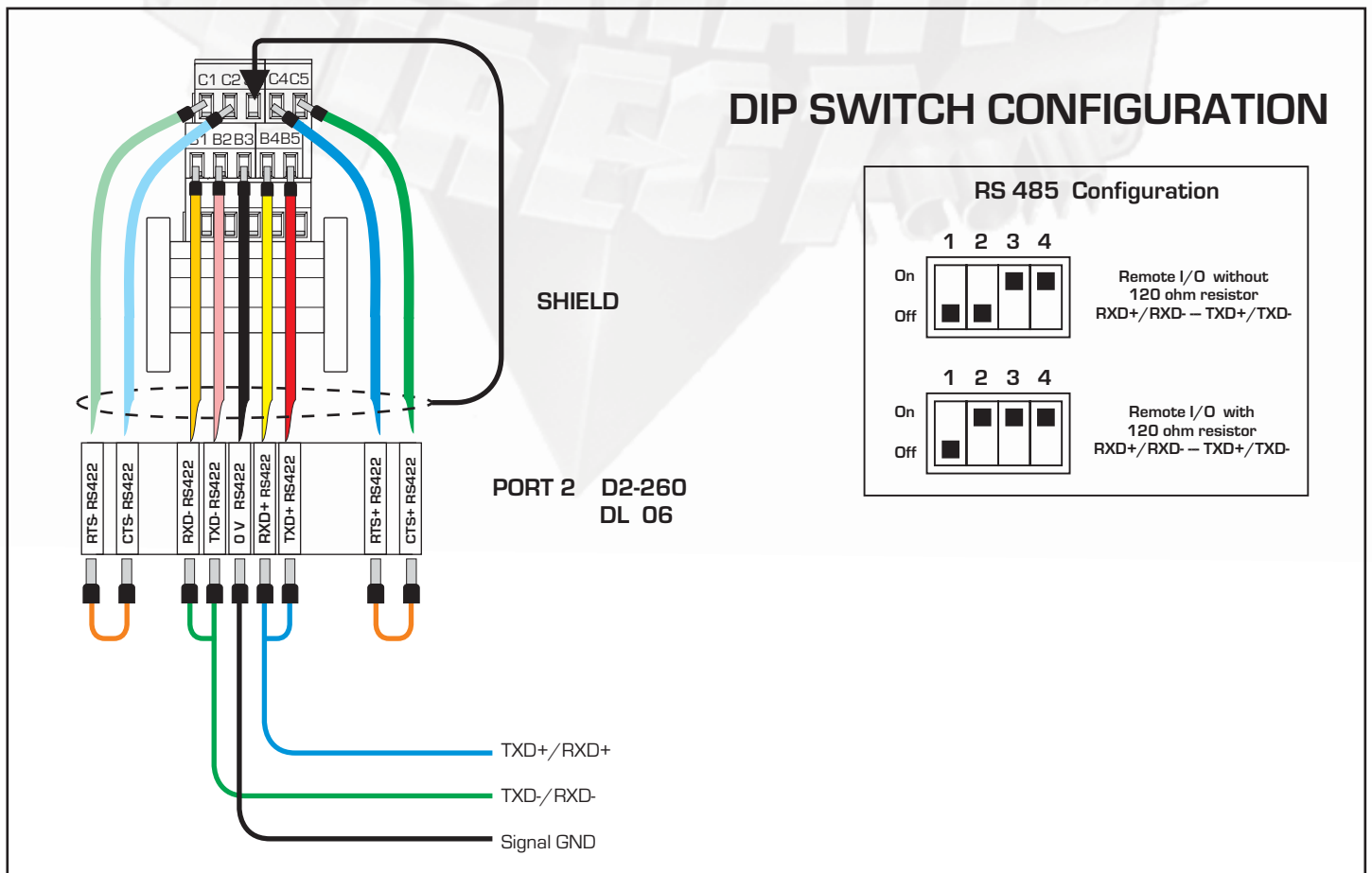


PORT 2 D2-250 (-1)  
D2-260  
DL 06

## Connecting RS422

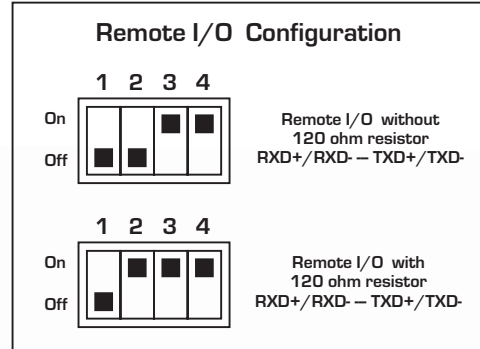
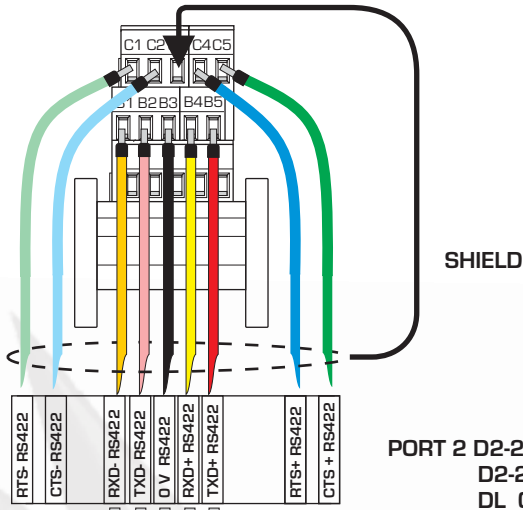


## Connecting RS485



# Connecting RS485 / Remote I/O

## DIP SWITCH CONFIGURATION



Remote I/O

