



OPT2408 → 2417

OPERATING INSTRUCTIONS

wenglor TPL

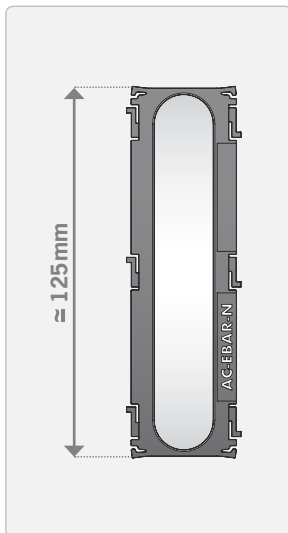
INTRODUCTION

This Technical User Guide contains warnings and guidance for correct and safe operation of the product. These instructions must be followed at all times. wenglorTPL will not be held responsible for problems caused by using the product contrary to these instructions and the Warranty will be deemed invalid.

UNPACKING

This product is packed at the factory using suitable materials for safe transport. To open the package, do not use any cutting blade to avoid damaging the product(s). Please use the delivered accessories if needed. (Do not use any other products or equivalents to replace the delivered accessories). In the event of damage occurring during shipping, it must be reported to the carrier at time of delivery (including noting the damage in writing on the delivery documents). It is also your responsibility to notify wenglorTPL in writing of the damage within 24 hours of receipt of the package. If these instructions are not followed, wenglorTPL reserves the right not to accept requests for return and exchange of damaged products.

DESCRIPTION



This accessory will **WIDEN THE BEAM** of your Bar light product. References available:

- **OPT2408** (AC-EBAR-N) : Narrow Beam, $\pm 10^\circ$,
- **OPT2409** (AC-EBAR-M) : Medium Beam, $\pm 17^\circ$,
- **OPT2410** (AC-EBAR-W) : Wide Beam, $\pm 25^\circ$,
- **OPT2411** (AC-EBAR-L) : Line light effect, $\pm 9-16^\circ$ elliptical,
- **OPT2412** (AC-EBAR-N-P1) : Narrow Beam, $\pm 10^\circ$, Polarised,
- **OPT2413** (AC-EBAR-M-P1) : Medium Beam, $\pm 17^\circ$, Polarised,
- **OPT2414** (AC-EBAR-W-P1) : Wide Beam, $\pm 25^\circ$, Polarised,
- **OPT2415** (AC-EBAR-L-P1) : Line light effect, $\pm 9-16^\circ$ elliptical, Polarised,
- **OPT2416** (AC-EBAR-POL1) : Polarised only,
- **OPT2417** (AC-EBAR-T) : This is a transparent window. This has no effect on the illumination angle. It is used to fill in spaces if you are creating multiple illumination angles along the length of your bar light (eg. Curve effect).

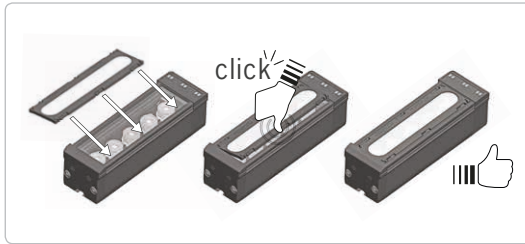
NOTE: 1 accessory per 125mm of bar light.



NOTE: This accessory only increase the angle of the light.

They cannot focus the light more than that provided by the embedded lens.

■ HOW TO ATTACH THE ACCESSORY ON THE BAR



- 1 – Put the springs on one side of the accessory into the groove on the side of the window on the bar,
- 2 – Firmly push the 3 springs with your thumb until they «click» into place*,
- 3 – The accessory is now secure. Turn on the illumination to use.

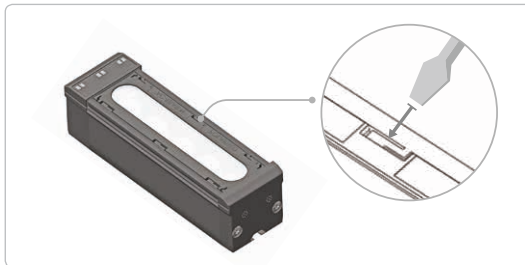
* Double check all springs have clicked in place. The accessory **MUST** be mounted flat for correct operation.

■ LARGER PRODUCTS



For larger products, simply start at one end & add them on in a line. Always check that all the springs are secure.

■ HOW TO REMOVE THE ACCESSORY FROM YOUR BAR



- 1 – Use a small flat head screwdriver as a wedging tool & place it into the gap between the spring and the bar light,
- 2 – Apply a light prising motion to pop the spring out of place,
- 3 – Repeat for remaining springs on the same side,
- 4 – Lift out of the bar light.

wenglor TPL

wenglor Straße 3
88069 Tettngang
Germany

