

DATA SHEET



Single Phase Induction Motor - Squirrel Cage

Customer	: Automation Direct			
Product line	: Single-Phase		Product code :	13594330
			Catalog # :	.3336ES1BW56CFL-S
Frame	: W56C		Locked rotor time	: 14s (cold) 8s (hot)
Output	: 0.33 HP (0.25 kW)		Temperature rise	: 80 K
Poles	: 2		Duty cycle	: Cont.(S1)
Frequency	: 60 Hz		Ambient temperature	: -20°C to +40°C
Rated voltage	: 115/208-230 V		Altitude	: 1000 m.a.s.l.
Rated current	: 5.20/2.88-2.60 A		Protection degree	: IP55
L. R. Amperes	: 36.4/20.2-18.2 A		Cooling method	: IC411 - TEFC
LRC	: 7.0x(Code P)		Mounting	: F-1
No load current	: 3.60/1.55-1.80 A		Rotation ¹	: Both (CW and CCW)
Rated speed	: 3490 rpm		Noise level ²	: 66.0 dB(A)
Slip	: 3.06 %		Starting method	: Direct On Line
Rated torque	: 0.497 ft.lb		Approx. weight ³	: 17.8 lb
Locked rotor torque	: 290 %			
Breakdown torque	: 290 %			
Insulation class	: F			
Service factor	: 1.15			
Moment of inertia (J)	: 0.0190 sq.ft.lb			
Design	: N			
Output	25%	50%	75%	100%
Efficiency (%)	41.7	44.5	52.5	56.5
Power Factor	0.34	0.59	0.67	0.74
			Foundation loads	
			Max. traction	: 5 lb
			Max. compression	: 23 lb
			<u>Drive end</u>	<u>Non drive end</u>
Bearing type	:	6203 ZZ	6202 ZZ	
Sealing	:	V'Ring	Without Bearing Seal	
Lubrication interval	:	-	-	
Lubricant amount	:	-	-	
Lubricant type	:	Mobil Polyrex EM		
Notes				
This revision replaces and cancel the previous one, which must be eliminated. (1) Looking the motor from the shaft end. (2) Measured at 1m and with tolerance of +3dB(A). (3) Approximate weight subject to changes after manufacturing process. (4) At 100% of full load.			These are average values based on tests with sinusoidal power supply, subject to the tolerances stipulated in NEMA MG-1.	
Rev.	Changes Summary		Performed	Checked
Performed by			Page	Revision
Checked by				
Date	22/08/2022		1 / 2	

LOAD PERFORMANCE CURVE

Single Phase Induction Motor - Squirrel Cage

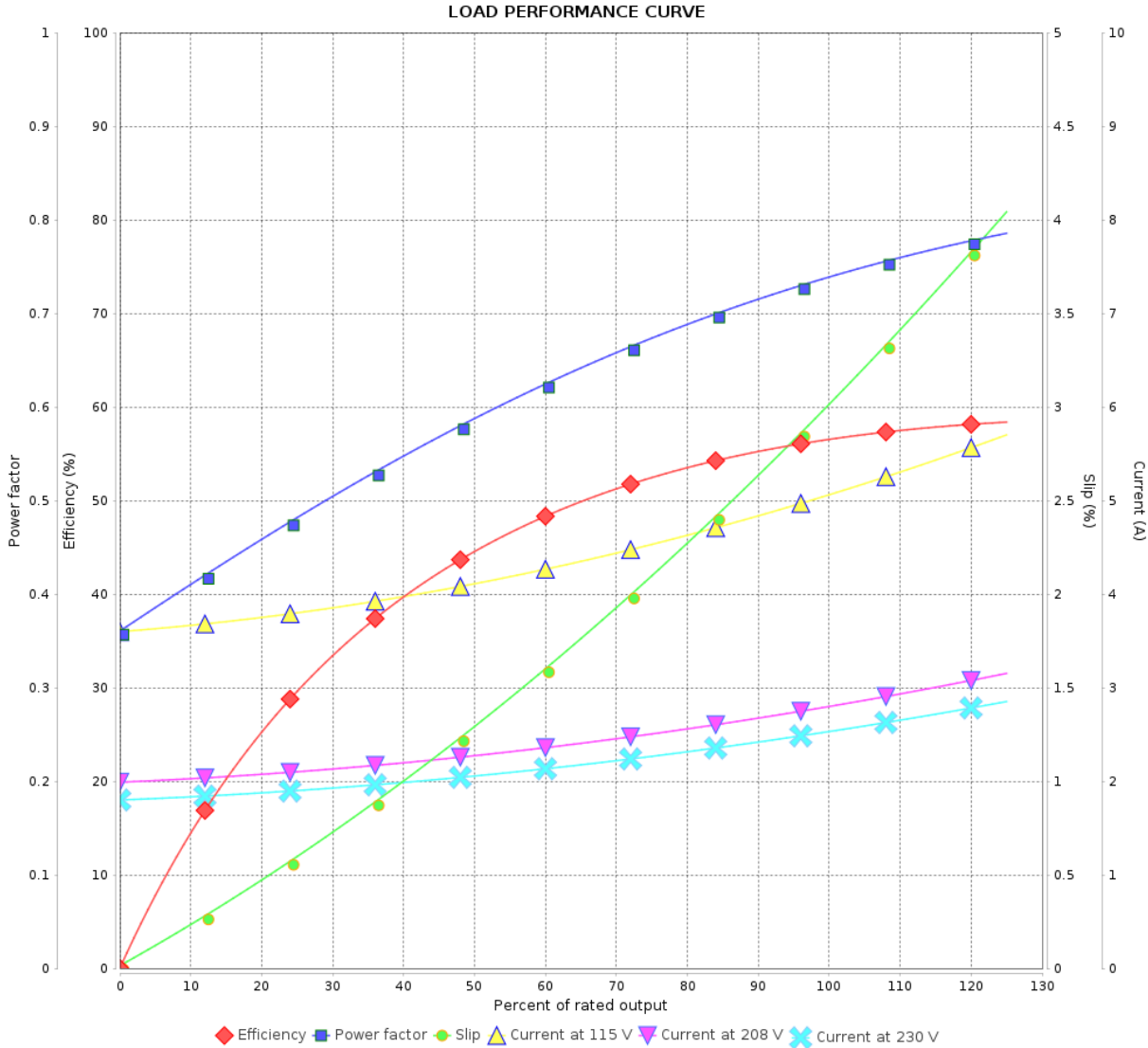


Customer : Automation Direct

Product line : Single-Phase

Product code : 13594330

Catalog # : .3336ES1BW56CFL-S



Performance : 115/208-230 V 60 Hz 2P

Rated current : 5.20/2.88-2.60 A
 LRC : 7.0
 Rated torque : 0.497 ft.lb
 Locked rotor torque : 290 %
 Breakdown torque : 290 %
 Rated speed : 3490 rpm

Moment of inertia (J) : 0.0190 sq.ft.lb
 Duty cycle : Cont.(S1)
 Insulation class : F
 Service factor :
 Temperature rise : 80 K
 Design : N

Rev.	Changes Summary	Performed	Checked	Date
Performed by			Page 2 / 2	Revision
Checked by				
Date	22/08/2022			

1 2 3 4 5 6

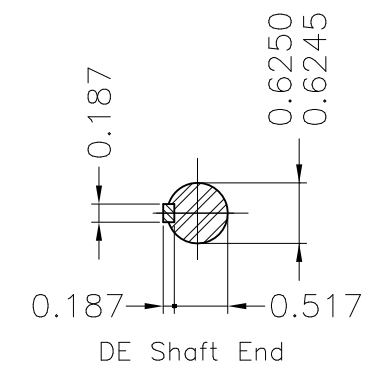
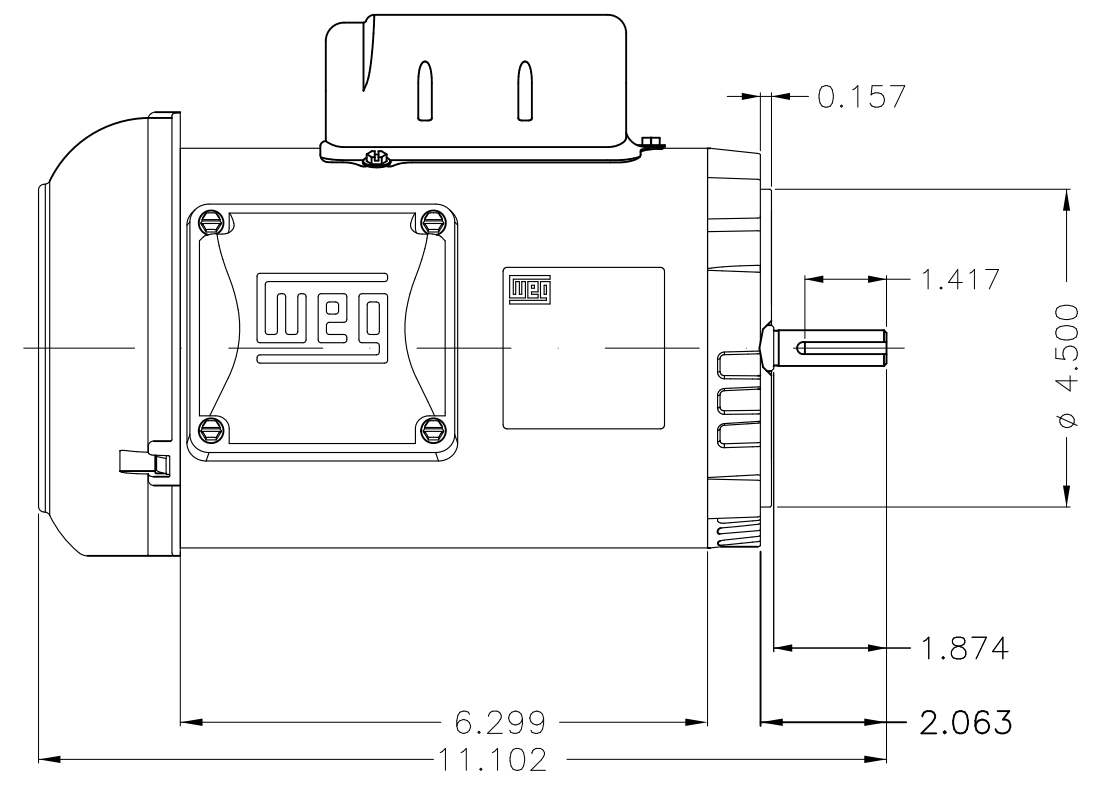
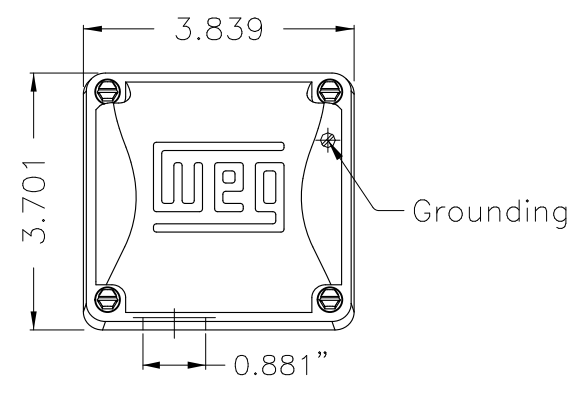
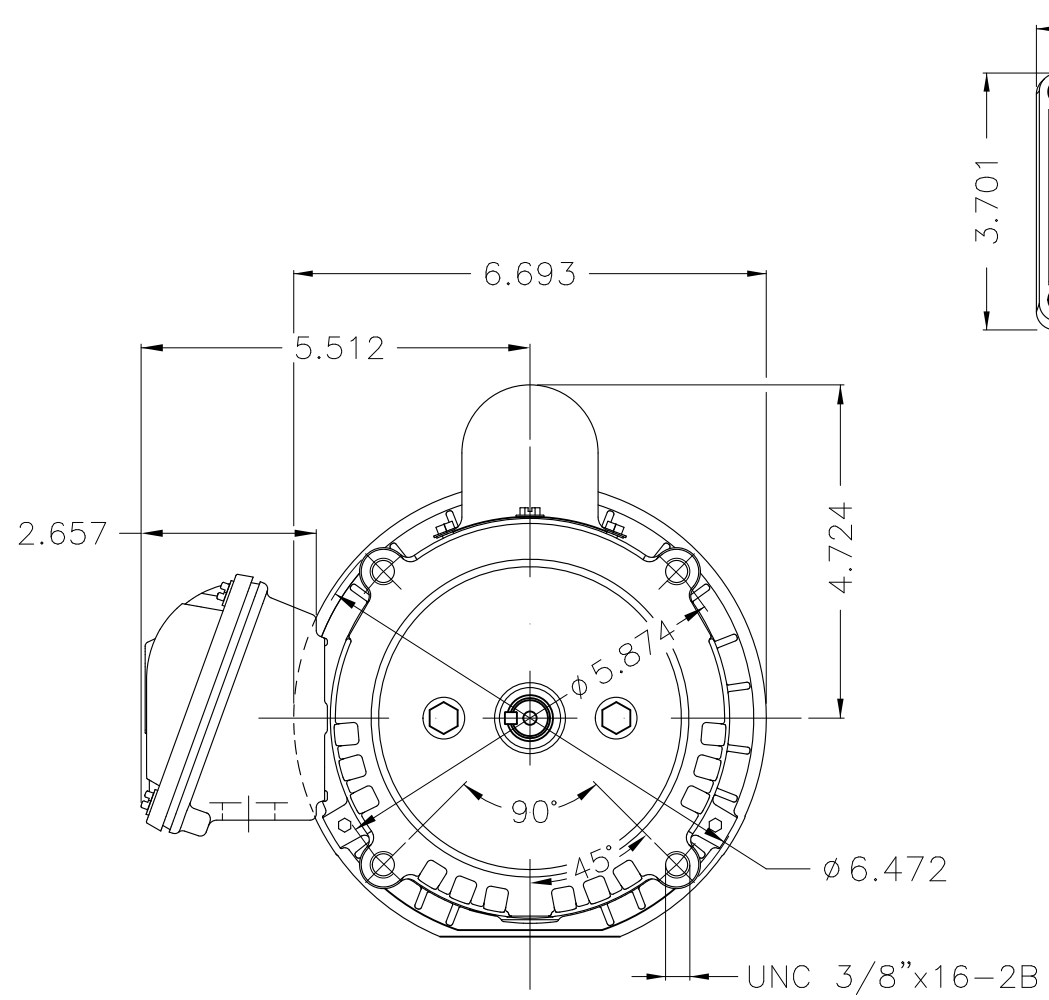
A

B

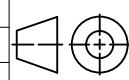
C

D

E



Color Munsell N 1 matte black
 Painting plan 207N
 Mounting F-1/B14R(D)

ECM	LOC	SUMMARY OF MODIFICATIONS	EXECUTED	CHECKED	RELEASED	DATE	VER
EXECUTED	HYBRISUSER	 SINGLE PH. MOTOR ROLLED STEEL FRAME W56C IP55 TEFC					
CHECKED							
RELEASED							
REL DT.	WMO	Jaragua do Sul	Product Engineering	PREVIEW WDD		SHEET 1 / 1	

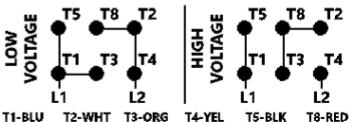
0.33 HP 02 Poles 60 Hz



MADE IN BRAZIL
13594330**MODEL .3336ES1BW56CFL-S**
W01.ME0IC0X0X

PH1	Hz 60	FR W56C	ALT 1000 m.a.s.l	ENCL TEFC	IP55
V	115/208-230		A	5.20/2.88-2.60	
HP	0.33		kW	0.25	
SF	1.15		SFA	-	
RPM	3490		PF	0.74	
AMB	40°C		INS CL F ΔT 80K	AVG. F.L. EFF.	56.5%
DUTY CONT.			DES N CODE P		

USABLE @ 208V SF1.00

Electric MotorDE 8203-ZZ
ODE 8202-ZZ**MOBIL POLYREX EM****WARNING:** Motor must be grounded in accordance with local and national electrical codes to prevent serious electrical shocks. Disconnect power source before servicing unit.**AVERTISSEMENT:** Le moteur doit être mis à la terre conformément aux codes électriques locaux nationaux afin d'éviter tout choc électrique grave. Déconnectez l'alimentation avant l'entretien de la machine.**REVERSE ROTATION INVERT T5 AND T8**B/N:
29JUL2022