

DATA SHEET



Three Phase Induction Motor - Squirrel Cage

Customer : Automation Direct																			
Product line : Standard Efficiency Three-Phase	Product code : 14785546 Catalog # : .3318ES3E56CFL-S																		
Frame : 56C Output : 0.33 HP (0.25 kW) Poles : 4 Frequency : 60 Hz Rated voltage : 208-230/460 V Rated current : 1.38-1.25/0.624 A L. R. Amperes : 9.80-8.86/4.43 A LRC : 7.1x(Code M) No load current : 0.810-0.940/0.470 A Rated speed : 1765 rpm Slip : 1.94 % Rated torque : 0.982 ft.lb Locked rotor torque : 229 % Breakdown torque : 300 % Insulation class : F Service factor : 1.15 Moment of inertia (J) : 0.0517 sq.ft.lb	Locked rotor time : 55s (cold) 31s (hot) Temperature rise : 80 K Duty cycle : Cont.(S1) Ambient temperature : -20°C to +40°C Altitude : 1000 m.a.s.l. Protection degree : IP55 Cooling method : IC411 - TEFC Mounting : F-1 Rotation ¹ : Both (CW and CCW) Noise level ² : 52.0 dB(A) Starting method : Direct On Line Approx. weight ³ : 19.6 lb																		
<table border="1"> <tr> <td>Output</td> <td>25%</td> <td>50%</td> <td>75%</td> <td>100%</td> </tr> <tr> <td>Efficiency (%)</td> <td>62.0</td> <td>64.0</td> <td>72.0</td> <td>74.0</td> </tr> <tr> <td>Power Factor</td> <td>0.26</td> <td>0.47</td> <td>0.58</td> <td>0.68</td> </tr> </table>	Output	25%	50%	75%	100%	Efficiency (%)	62.0	64.0	72.0	74.0	Power Factor	0.26	0.47	0.58	0.68	Foundation loads Max. traction : 27 lb Max. compression : 47 lb			
Output	25%	50%	75%	100%															
Efficiency (%)	62.0	64.0	72.0	74.0															
Power Factor	0.26	0.47	0.58	0.68															
<table border="1"> <tr> <td></td> <td><u>Drive end</u></td> <td><u>Non drive end</u></td> </tr> <tr> <td>Bearing type :</td> <td>6203 ZZ</td> <td>6202 ZZ</td> </tr> <tr> <td>Sealing :</td> <td>V'Ring</td> <td>Without Bearing Seal</td> </tr> <tr> <td>Lubrication interval :</td> <td>-</td> <td>-</td> </tr> <tr> <td>Lubricant amount :</td> <td>-</td> <td>-</td> </tr> <tr> <td>Lubricant type :</td> <td colspan="2">Mobil Polyrex EM</td> </tr> </table>		<u>Drive end</u>	<u>Non drive end</u>	Bearing type :	6203 ZZ	6202 ZZ	Sealing :	V'Ring	Without Bearing Seal	Lubrication interval :	-	-	Lubricant amount :	-	-	Lubricant type :	Mobil Polyrex EM		
	<u>Drive end</u>	<u>Non drive end</u>																	
Bearing type :	6203 ZZ	6202 ZZ																	
Sealing :	V'Ring	Without Bearing Seal																	
Lubrication interval :	-	-																	
Lubricant amount :	-	-																	
Lubricant type :	Mobil Polyrex EM																		
Notes USABLE @208V SF 1.00																			
This revision replaces and cancel the previous one, which must be eliminated. (1) Looking the motor from the shaft end. (2) Measured at 1m and with tolerance of +3dB(A). (3) Approximate weight subject to changes after manufacturing process. (4) At 100% of full load.	These are average values based on tests with sinusoidal power supply, subject to the tolerances stipulated in NEMA MG-1.																		
Rev.	Changes Summary	Performed	Checked	Date															
Performed by																			
Checked by			Page	Revision															
Date	22/08/2022		1 / 5																

TORQUE AND CURRENT VS SPEED CURVE

Three Phase Induction Motor - Squirrel Cage



Customer : Automation Direct

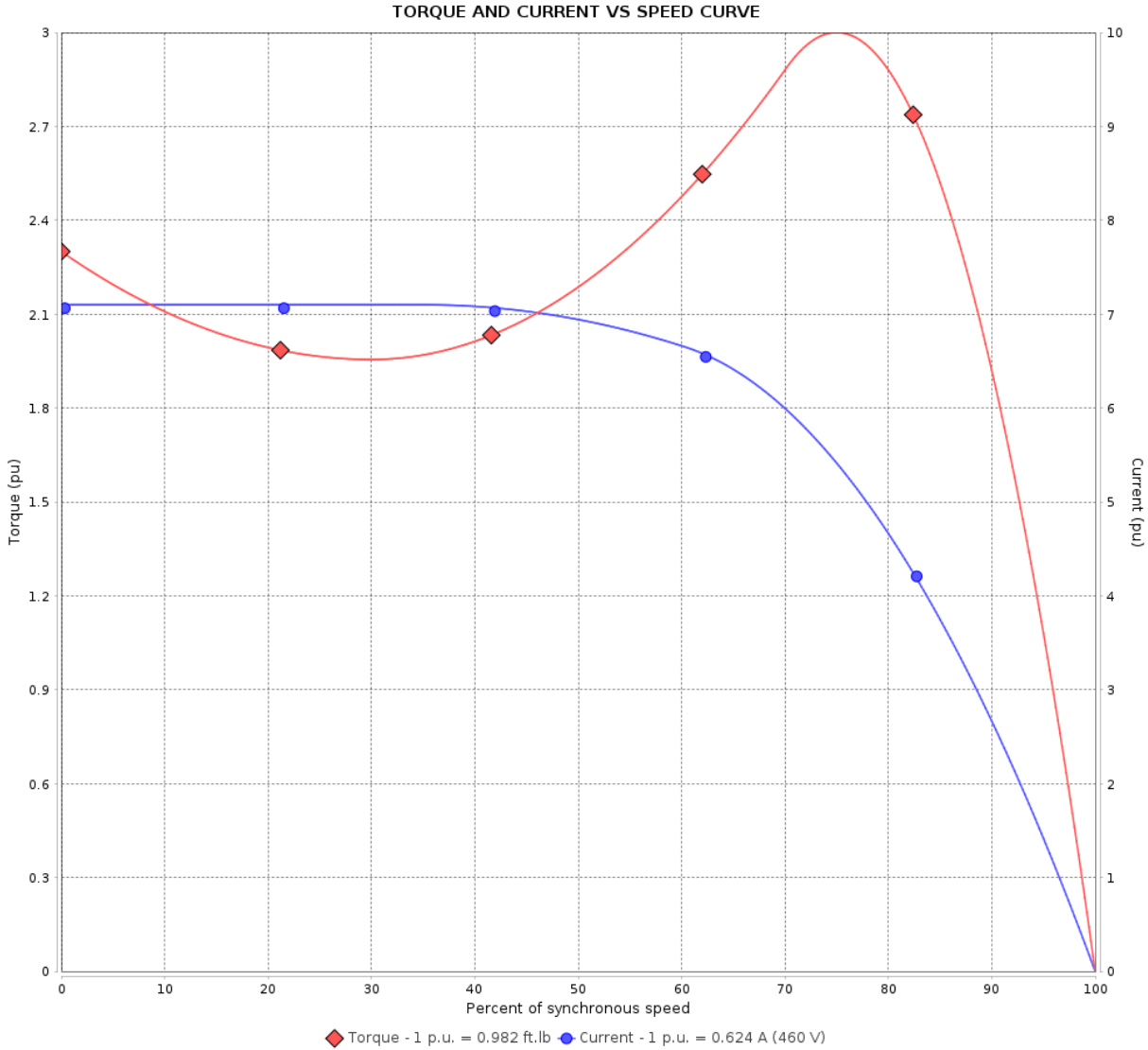
Product line : Standard Efficiency Three-Phase

Product code :

14785546

Catalog # :

.3318ES3E56CFL-S



Performance : 208-230/460 V 60 Hz 4P

Rated current : 1.38-1.25/0.624 A
 LRC : 7.1
 Rated torque : 0.982 ft.lb
 Locked rotor torque : 229 %
 Breakdown torque : 300 %
 Rated speed : 1765 rpm

Moment of inertia (J) : 0.0517 sq.ft.lb
 Duty cycle : Cont.(S1)
 Insulation class : F
 Service factor :
 Temperature rise : 80 K

Locked rotor time : 55s (cold) 31s (hot)

Rev.	Changes Summary	Performed	Checked	Date
Performed by		Page		Revision
Checked by		2 / 5		
Date	22/08/2022			

LOAD PERFORMANCE CURVE

Three Phase Induction Motor - Squirrel Cage



Customer : Automation Direct

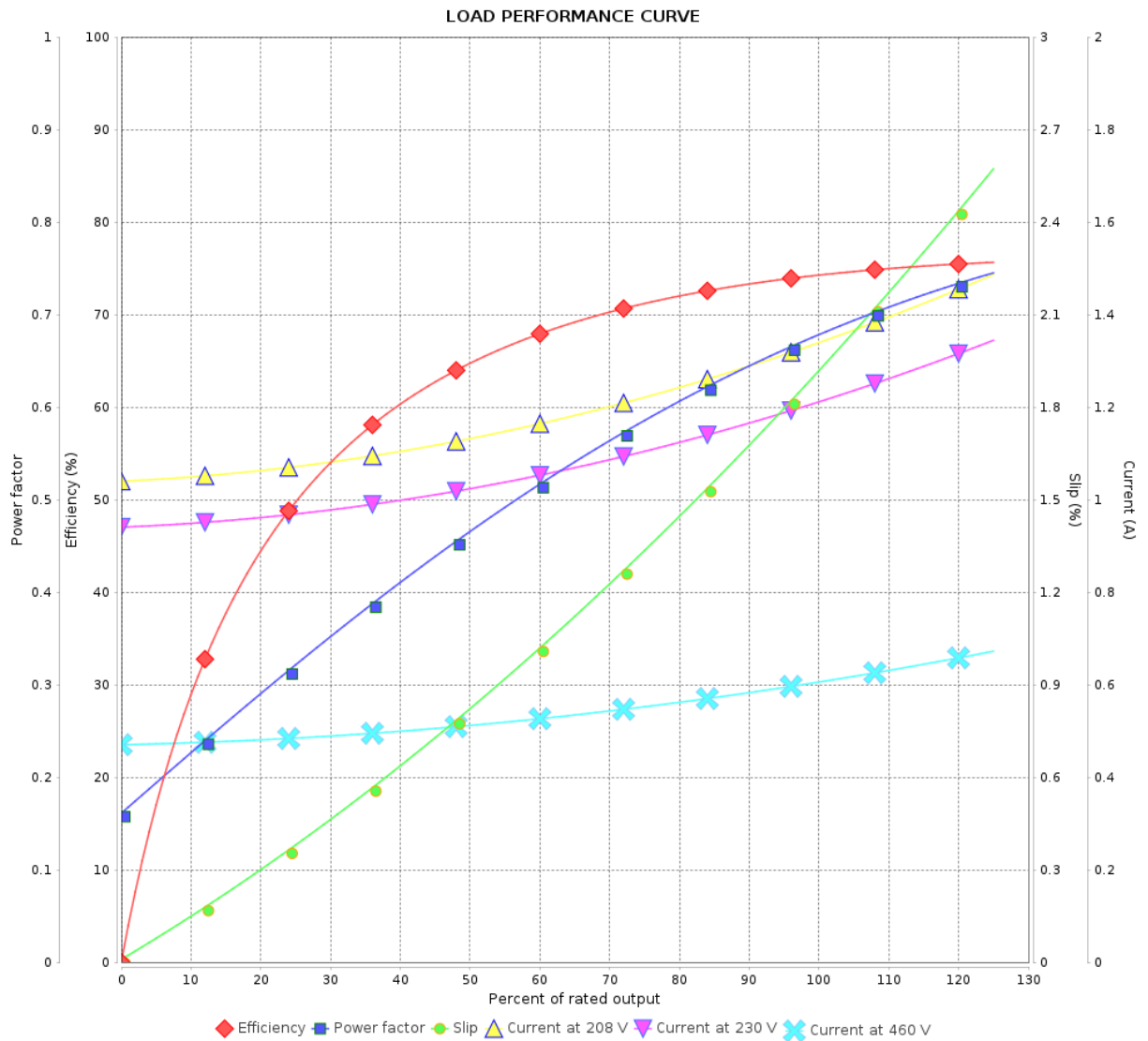
Product line : Standard Efficiency Three-Phase

Product code :

14785546

Catalog # :

.3318ES3E56CFL-S



Performance : 208-230/460 V 60 Hz 4P

Rated current : 1.38-1.25/0.624 A
 LRC : 7.1
 Rated torque : 0.982 ft.lb
 Locked rotor torque : 229 %
 Breakdown torque : 300 %
 Rated speed : 1765 rpm

Moment of inertia (J) : 0.0517 sq.ft.lb
 Duty cycle : Cont.(S1)
 Insulation class : F
 Service factor :
 Temperature rise : 80 K

Rev.	Changes Summary	Performed	Checked	Date
Performed by			Page	Revision
Checked by				
Date				

THERMAL LIMIT CURVE

Three Phase Induction Motor - Squirrel Cage



Customer : Automation Direct

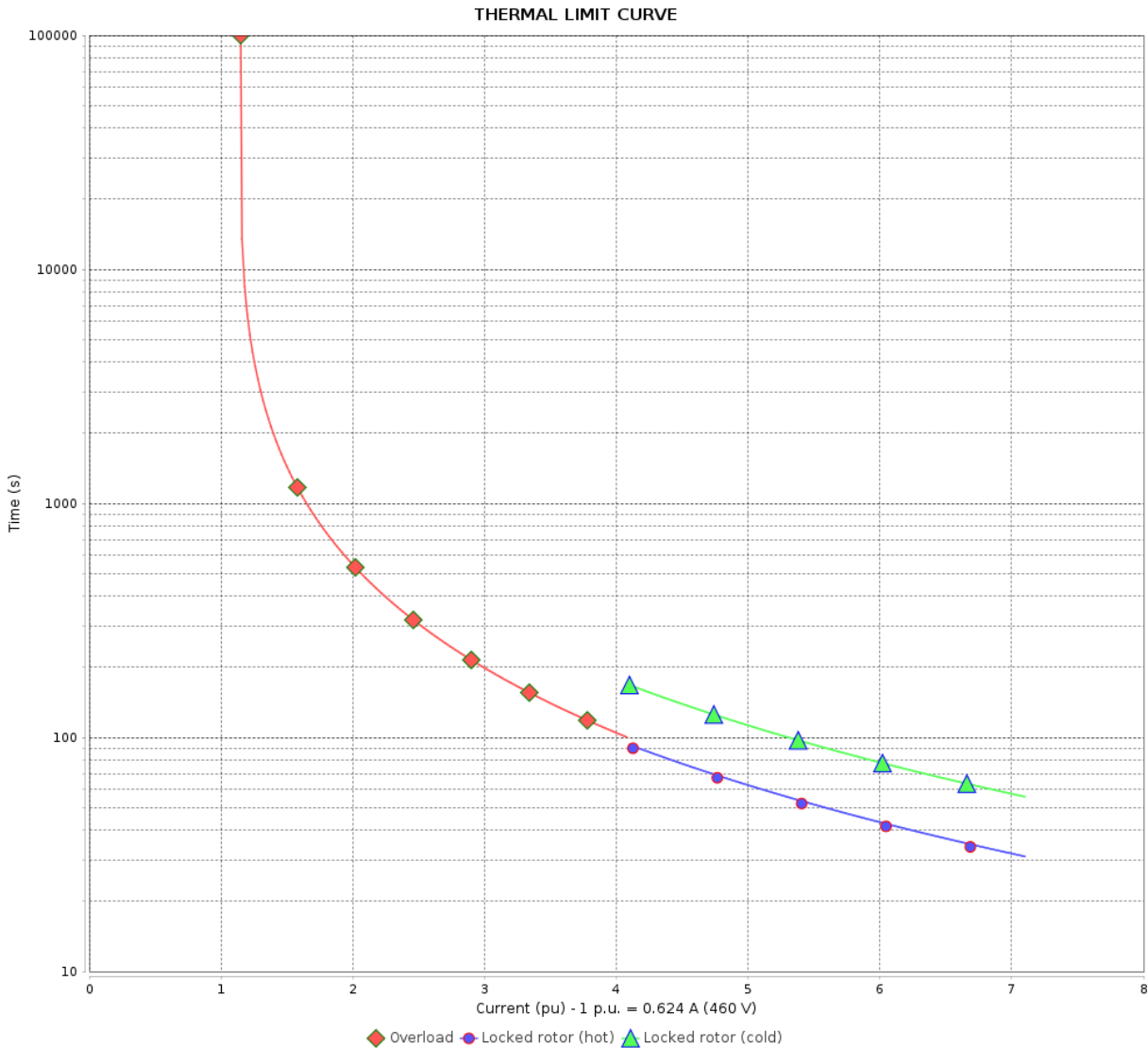
Product line : Standard Efficiency Three-Phase

Product code :

14785546

Catalog # :

.3318ES3E56CFL-S



Performance : 208-230/460 V 60 Hz 4P

Rated current : 1.38-1.25/0.624 A
 LRC : 7.1
 Rated torque : 0.982 ft.lb
 Locked rotor torque : 229 %
 Breakdown torque : 300 %
 Rated speed : 1765 rpm

Moment of inertia (J) : 0.0517 sq.ft.lb
 Duty cycle : Cont.(S1)
 Insulation class : F
 Service factor :
 Temperature rise : 80 K

Heating constant
 Cooling constant

Rev.	Changes Summary	Performed	Checked	Date
Performed by	22/08/2022	Page 4 / 5		Revision
Checked by				
Date				

VFD OPERATION CURVE

Three Phase Induction Motor - Squirrel Cage



Customer : Automation Direct

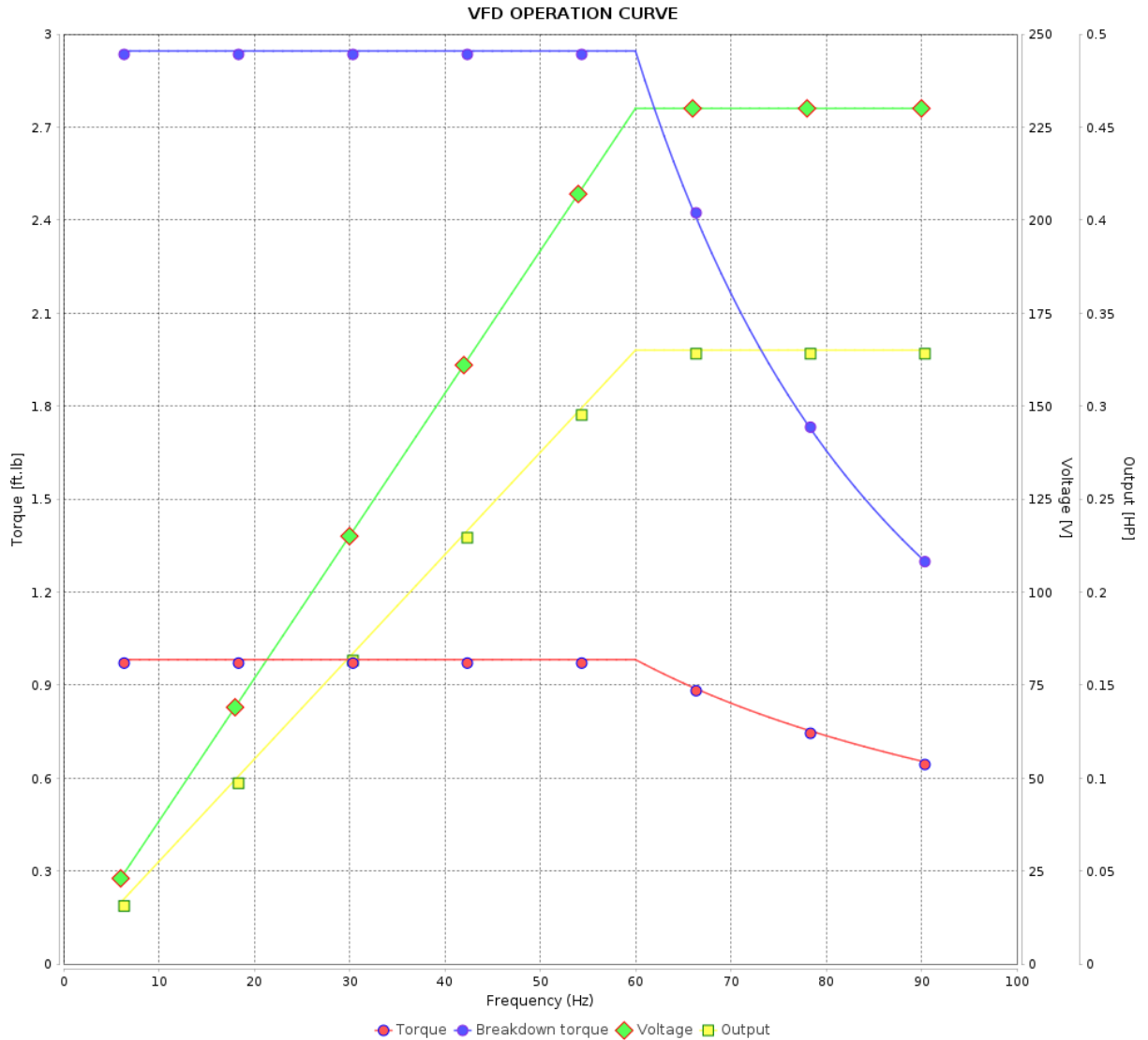
Product line : Standard Efficiency Three-Phase

Product code :

14785546

Catalog # :

.3318ES3E56CFL-S



Performance : 208-230/460 V 60 Hz 4P

Rated current : 1.38-1.25/0.624 A
 LRC : 7.1
 Rated torque : 0.982 ft.lb
 Locked rotor torque : 229 %
 Breakdown torque : 300 %
 Rated speed : 1765 rpm

Moment of inertia (J) : 0.0517 sq.ft.lb
 Duty cycle : Cont.(S1)
 Insulation class : F
 Service factor :
 Temperature rise : 80 K

Rev.	Changes Summary	Performed	Checked	Date
Performed by			Page 5 / 5	Revision
Checked by				
Date	22/08/2022			

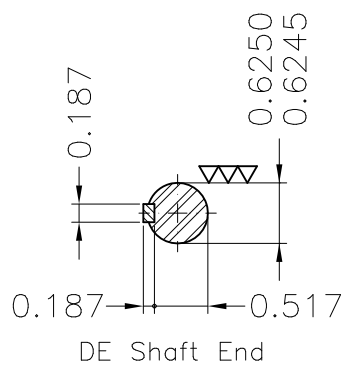
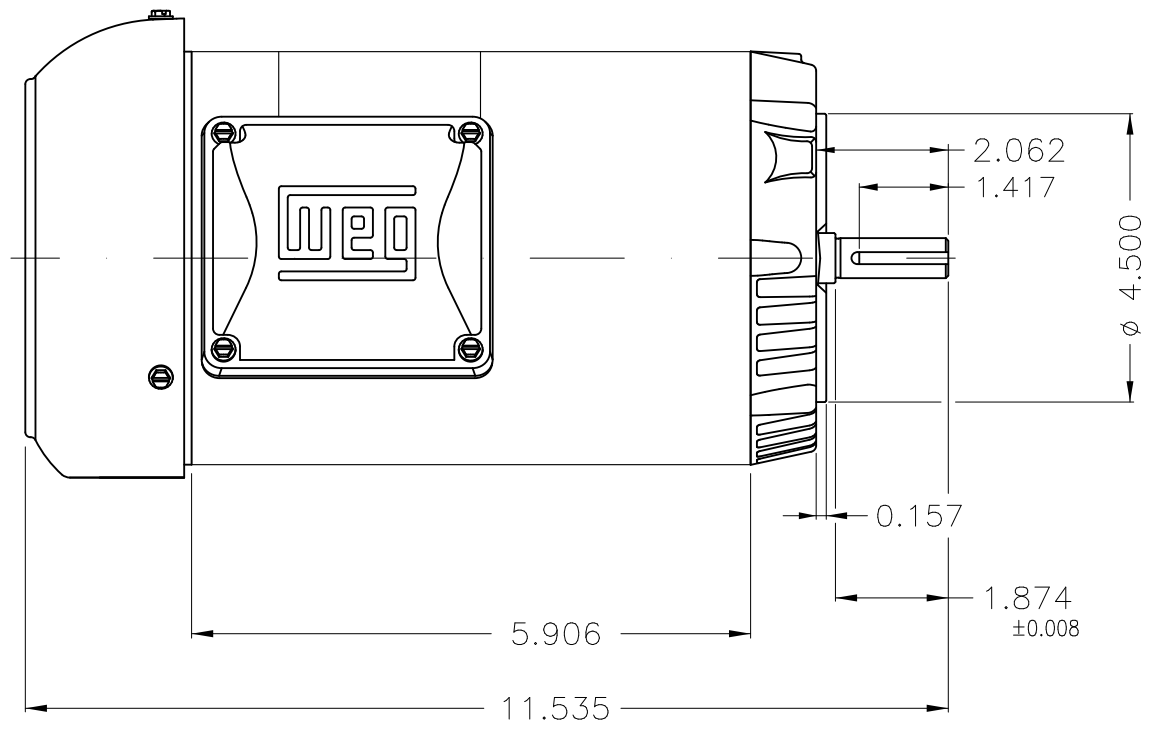
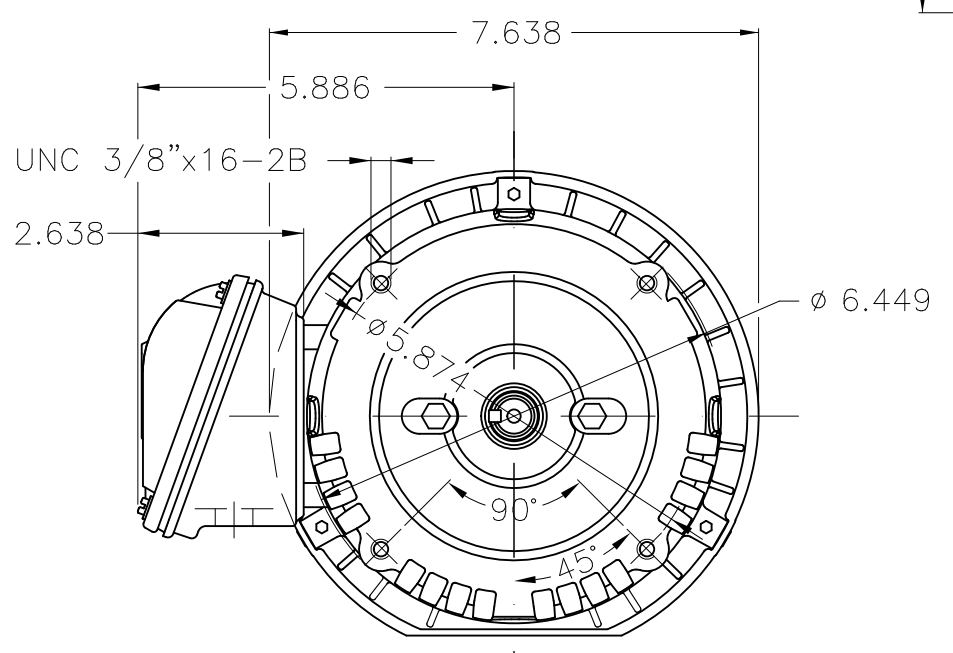
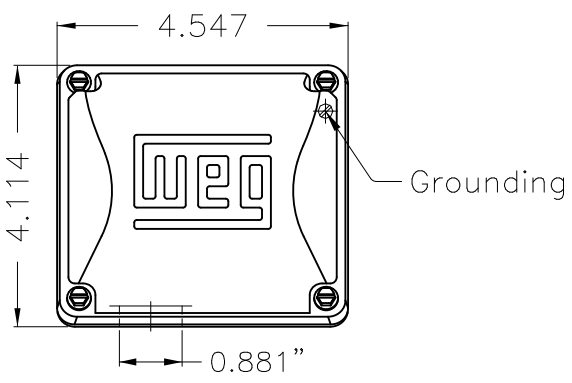
A

B

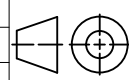
C

D

E



Fan cover - steel plate
 Color Munsell N 1 matte black
 Painting plan 207N
 Mounting F-1/B14R(D)

ECM	LOC	SUMMARY OF MODIFICATIONS	EXECUTED	CHECKED	RELEASED	DATE	VER
EXECUTED	HYBRISUSER	 THREE PH. MOTOR ROLLED STEEL FRAME 56C IP55 TEFC					
CHECKED							
RELEASED							
REL DT.	WMO	Jaragua do Sul	Product Engineering	PREVIEW WDD		SHEET 1 / 1	

0.33 HP 04 Poles 60 Hz



MADE IN BRAZIL

MAT: 14785546

W01.TE0IC0X0X

MODEL 3318ES3E56CFL-S

25AUG2022 B/N:

**For 60Hz: Class I, Zone 2, IIC
Class I, Div.2, Gr. A,B,C,D - T3
Div 2 Inverter Duty (SF1.00)**

CT 2:1/VT 1000:1

PH 3	Hz 60	HP 0.33
FR 56C		KW 0.25
DUTY CONT.		V 208-230/460
ALT 1000 m.a.s.l.		A 1.38-1.25/0.624
INS CL F AT 80K	IP55	SFA 1.38-1.44/0.718
AMB 40°C	DES -	SF 1.15
ENCL TEFC	CODE M	PF 0.68
USABLE @ 208V SF1.00		RPM 1765
		NEMA NOM. EFF 74.0%

ALTERNATE RATING: 0.33HP 50Hz 190-220/380-415V SF1.00
1.38-1.30/0.678-0.690A 1455RPM EFF 73.1% (IE2) IEC 60034-1

For safe area-Inverter duty motor For 60Hz use on VPWM 1000:1 VT, 10:1 CT

DE 6203-ZZ	ODE 6202-ZZ	MOBIL POLYREX EM
------------	-------------	------------------



T1-BLU T2-WHT
T3-ORG T4-YEL
T5-BLK T6-GRY
T7-PNK T8-RED
T9-BRK RED

INTERCHANGE ANY TWO LINE WIRES TO REVERSE THE ROTATION



WARNING: Motor must be grounded in accordance with local and national electrical codes to prevent serious electrical shocks. Disconnect power source before servicing unit.

AVERTISSEMENT: Le moteur doit être mis à la terre conformément aux codes électriques locaux et nationaux afin d'éviter tout choc électrique grave. Déconnectez l'alimentation avant l'entretien de la machine.

