

# DATA SHEET



## Three Phase Induction Motor - Squirrel Cage

Customer :					
Product line : Rolled Steel NEMA Premium Efficiency Three-Phase		Product code : 12707693			
		Catalog # : 01536ET3E254T-S			
Frame	: 254/6T	Locked rotor time	: 25s (cold) 14s (hot)		
Output	: 15 HP (11 kW)	Temperature rise	: 80 K		
Poles	: 2	Duty cycle	: Cont.(S1)		
Frequency	: 60 Hz	Ambient temperature	: -20°C to +40°C		
Rated voltage	: 230/460 V	Altitude	: 1000 m.a.s.l.		
Rated current	: 34.8/17.4 A	Protection degree	: IP55		
L. R. Amperes	: 237/118 A	Cooling method	: IC411 - TEFC		
LRC	: 6.8x(Code G)	Mounting	: F-1		
No load current	: 13.0/6.50 A	Rotation <sup>1</sup>	: Both (CW and CCW)		
Rated speed	: 3525 rpm	Noise level <sup>2</sup>	: 75.0 dB(A)		
Slip	: 2.08 %	Starting method	: Direct On Line		
Rated torque	: 22.3 ft.lb	Approx. weight <sup>3</sup>	: 188 lb		
Locked rotor torque	: 200 %				
Breakdown torque	: 300 %				
Insulation class	: F				
Service factor	: 1.15				
Moment of inertia (J)	: 0.8718 sq.ft.lb				
Design	: B				
Output	50%	75%	100%	Foundation loads	
Efficiency (%)	89.5	91.0	91.0	Max. traction : 227 lb	
Power Factor	0.73	0.83	0.87	Max. compression : 415 lb	
		<u>Drive end</u>	<u>Non drive end</u>		
Bearing type	:	6309 Z C3	6208 Z C3		
Sealing	:	V'Ring	Without Bearing Seal		
Lubrication interval	:	15797 h	20000 h		
Lubricant amount	:	13 g	8 g		
Lubricant type	:	Mobil Polyrex EM			
Notes USABLE @208V 38.5A SF 1.00 SFA 38.5A					
This revision replaces and cancel the previous one, which must be eliminated. (1) Looking the motor from the shaft end. (2) Measured at 1m and with tolerance of +3dB(A). (3) Approximate weight subject to changes after manufacturing process. (4) At 100% of full load.			These are average values based on tests with sinusoidal power supply, subject to the tolerances stipulated in NEMA MG-1.		
Rev.	Changes Summary		Performed	Checked	Date
Performed by					
Checked by				Page	Revision
Date	27/10/2023			1 / 6	

# TORQUE AND CURRENT VS SPEED CURVE

Three Phase Induction Motor - Squirrel Cage

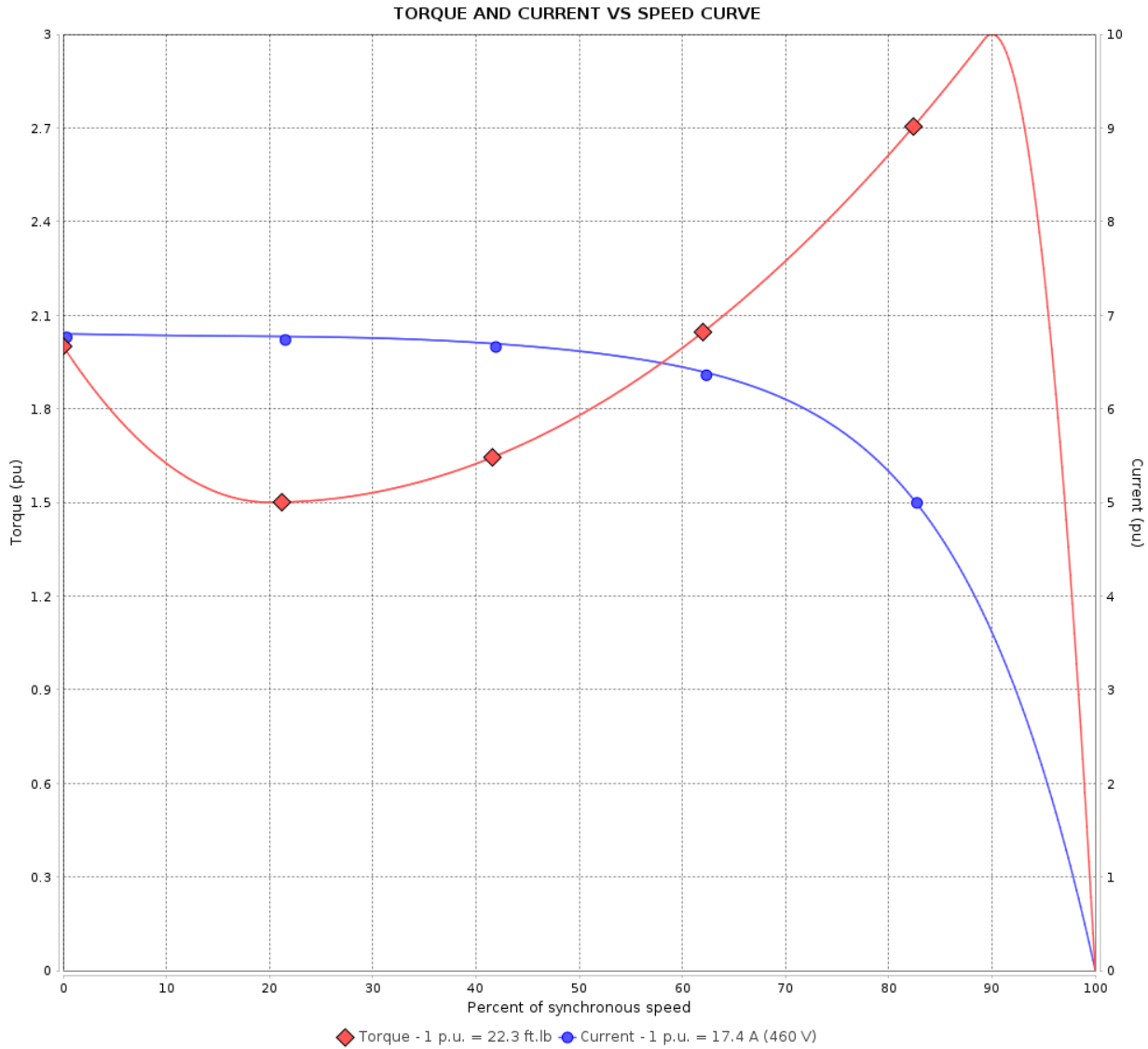


Customer :

Product line : Rolled Steel NEMA Premium Efficiency  
Three-Phase

Product code : 12707693

Catalog # : 01536ET3E254T-S



Performance : 230/460 V 60 Hz 2P

Rated current	: 34.8/17.4 A	Moment of inertia (J)	: 0.8718 sq.ft.lb
LRC	: 6.8	Duty cycle	: Cont.(S1)
Rated torque	: 22.3 ft.lb	Insulation class	: F
Locked rotor torque	: 200 %	Service factor	: 1.15
Breakdown torque	: 300 %	Temperature rise	: 80 K
Rated speed	: 3525 rpm	Design	: B

Locked rotor time : 25s (cold) 14s (hot)

Rev.	Changes Summary	Performed	Checked	Date
Performed by			Page 2 / 6	Revision
Checked by				
Date	27/10/2023			

# LOAD PERFORMANCE CURVE

## Three Phase Induction Motor - Squirrel Cage

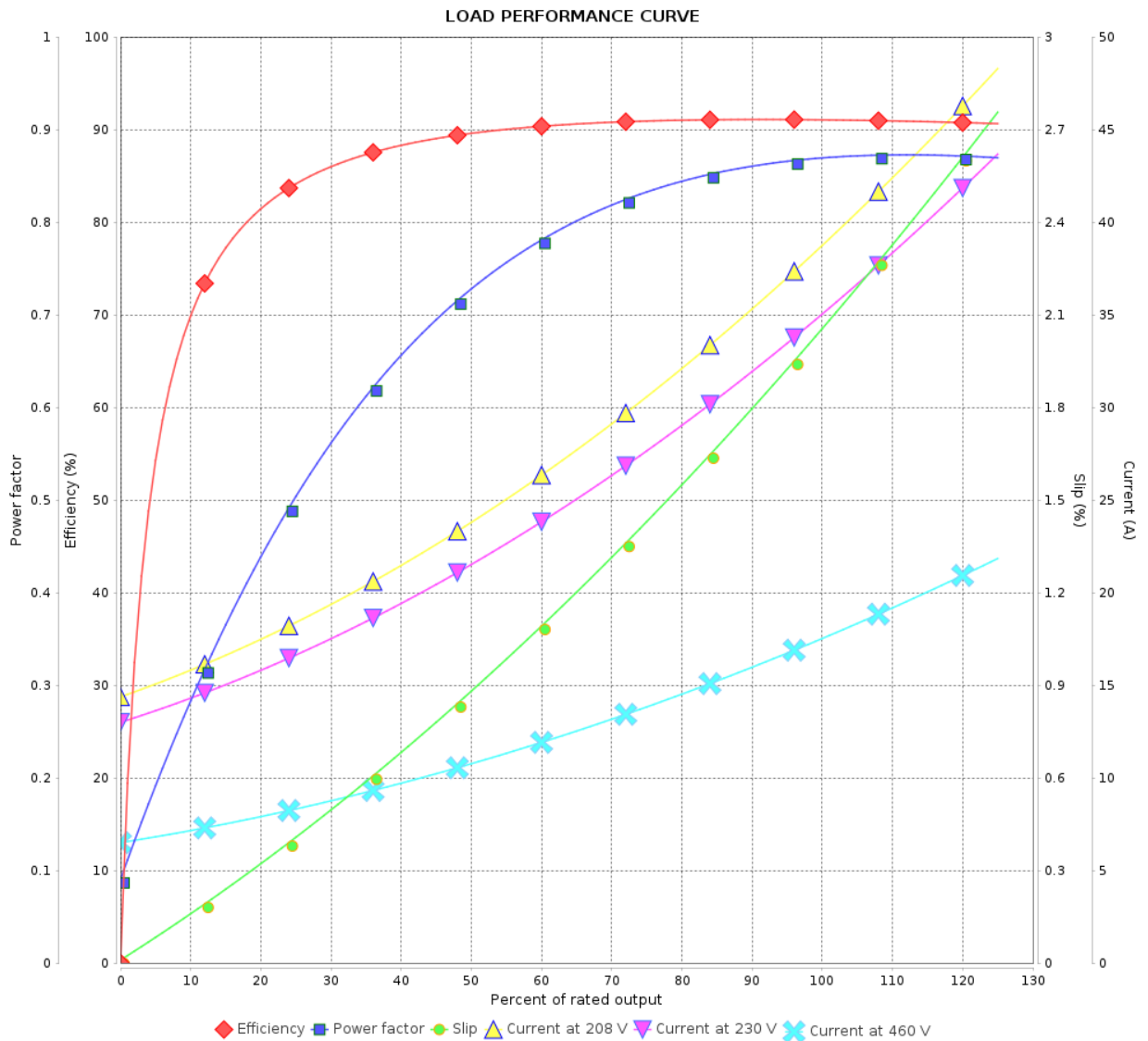


Customer :

Product line : Rolled Steel NEMA Premium Efficiency Three-Phase

Product code : 12707693

Catalog # : 01536ET3E254T-S



Performance : 230/460 V 60 Hz 2P

Rated current : 34.8/17.4 A  
 LRC : 6.8  
 Rated torque : 22.3 ft.lb  
 Locked rotor torque : 200 %  
 Breakdown torque : 300 %  
 Rated speed : 3525 rpm

Moment of inertia (J) : 0.8718 sq.ft.lb  
 Duty cycle : Cont.(S1)  
 Insulation class : F  
 Service factor : 1.15  
 Temperature rise : 80 K  
 Design : B

Rev.	Changes Summary	Performed	Checked	Date
Performed by			Page	Revision
Checked by				
Date				

# THERMAL LIMIT CURVE



## Three Phase Induction Motor - Squirrel Cage

Customer :

Product line : Rolled Steel NEMA Premium Efficiency  
Three-Phase

Product code : 12707693

Catalog # : 01536ET3E254T-S

Performance : 230/460 V 60 Hz 2P

Rated current : 34.8/17.4 A  
LRC : 6.8  
Rated torque : 22.3 ft.lb  
Locked rotor torque : 200 %  
Breakdown torque : 300 %  
Rated speed : 3525 rpm

Moment of inertia (J) : 0.8718 sq.ft.lb  
Duty cycle : Cont.(S1)  
Insulation class : F  
Service factor : 1.15  
Temperature rise : 80 K  
Design : B

Heating constant

Cooling constant

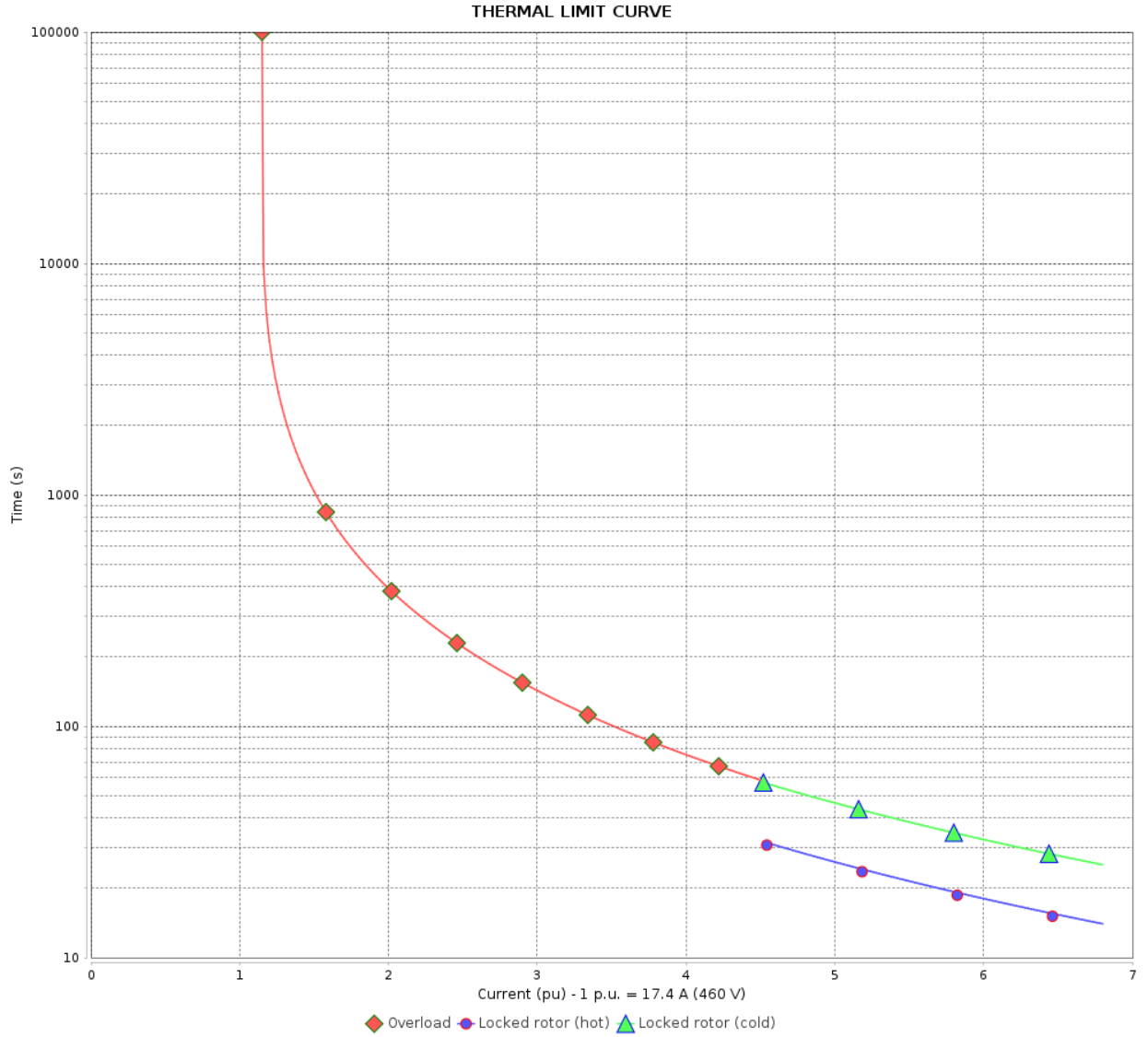
Rev.	Changes Summary	Performed	Checked	Date
Performed by				
Checked by			Page	Revision
Date	27/10/2023		4 / 6	

# THERMAL LIMIT CURVE

Three Phase Induction Motor - Squirrel Cage



Customer : \_\_\_\_\_



Rev.	Changes Summary	Performed	Checked	Date
Performed by		Page 5 / 6		Revision
Checked by				
Date				

# VFD OPERATION CURVE

Three Phase Induction Motor - Squirrel Cage

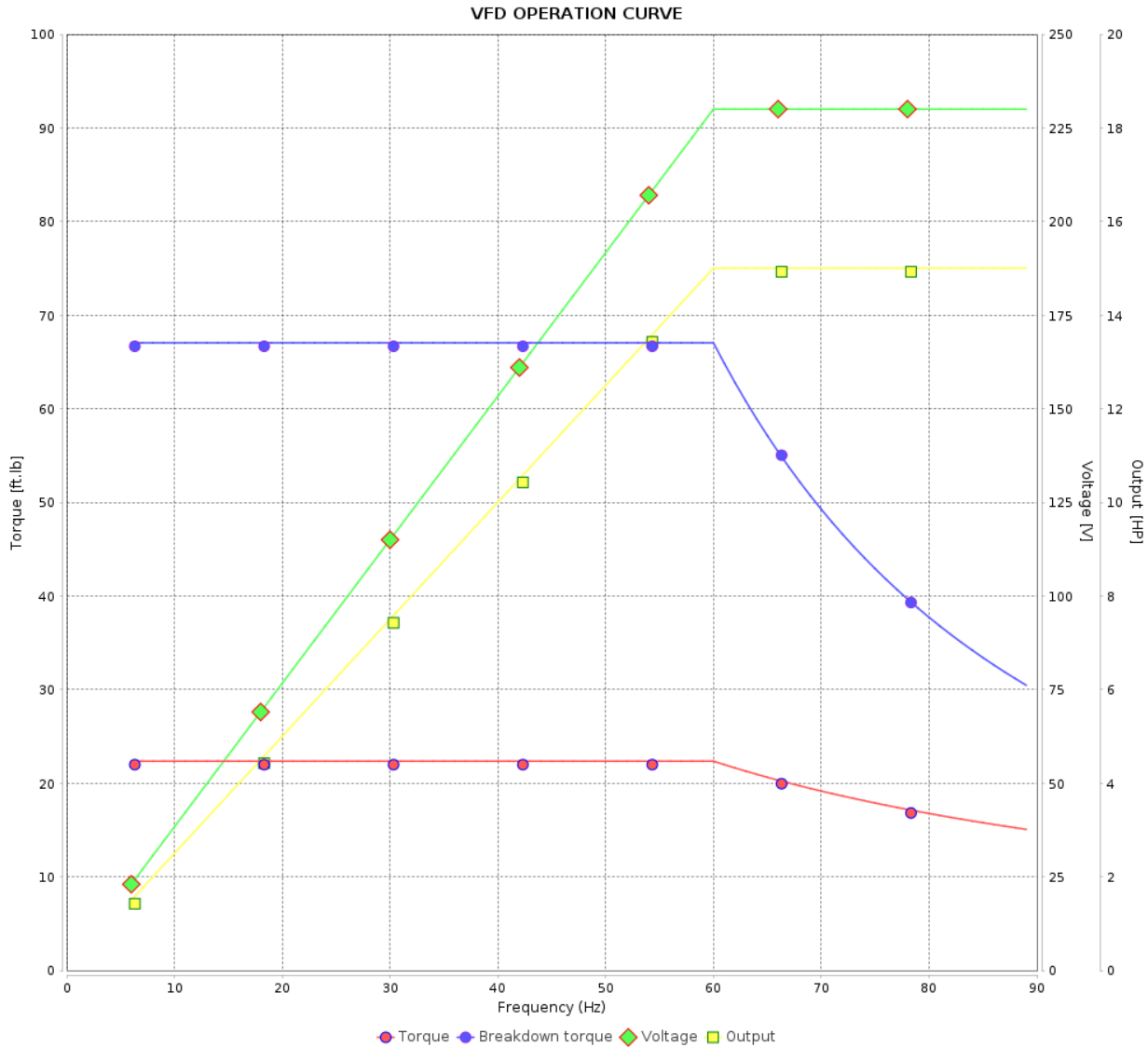


Customer :

Product line : Rolled Steel NEMA Premium Efficiency  
Three-Phase

Product code : 12707693

Catalog # : 01536ET3E254T-S



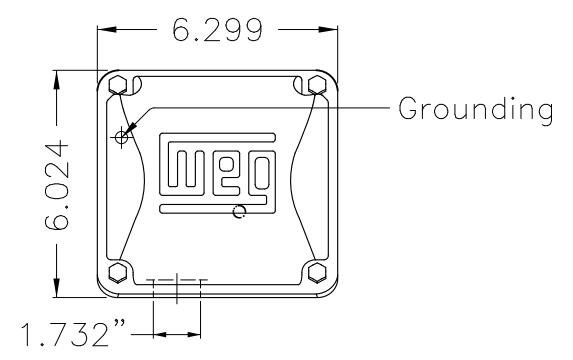
Performance : 230/460 V 60 Hz 2P

Rated current : 34.8/17.4 A  
 LRC : 6.8  
 Rated torque : 22.3 ft.lb  
 Locked rotor torque : 200 %  
 Breakdown torque : 300 %  
 Rated speed : 3525 rpm

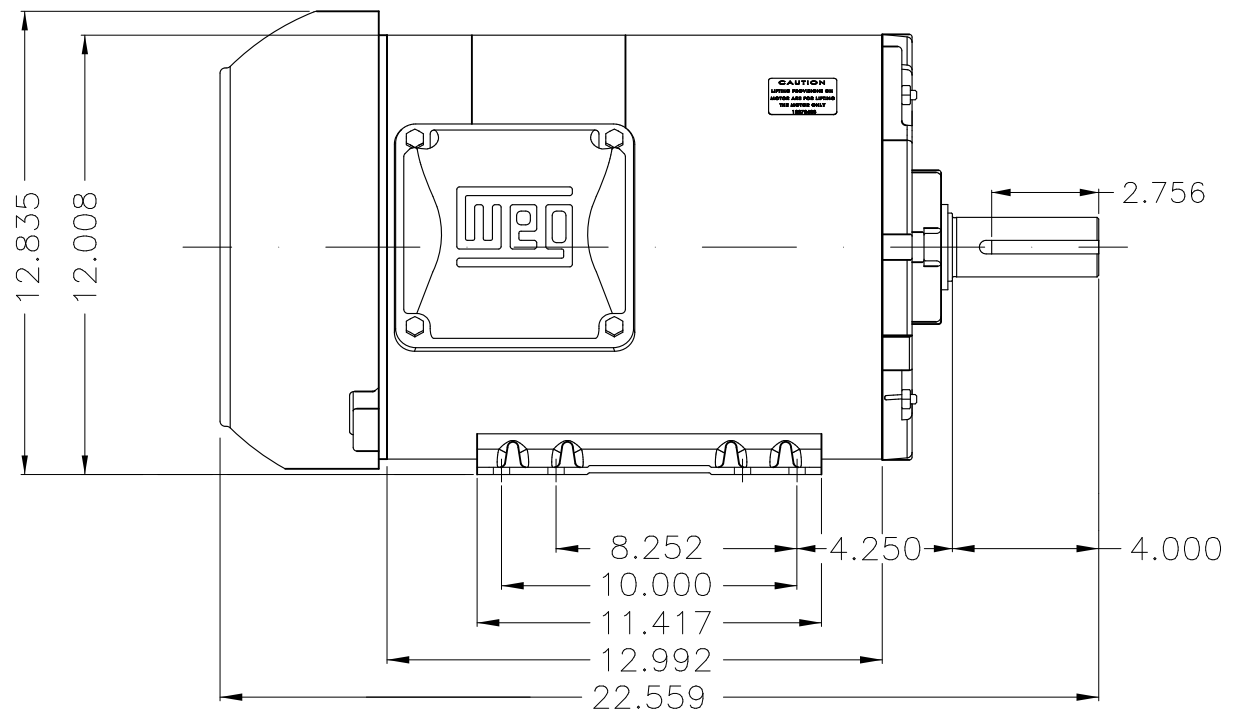
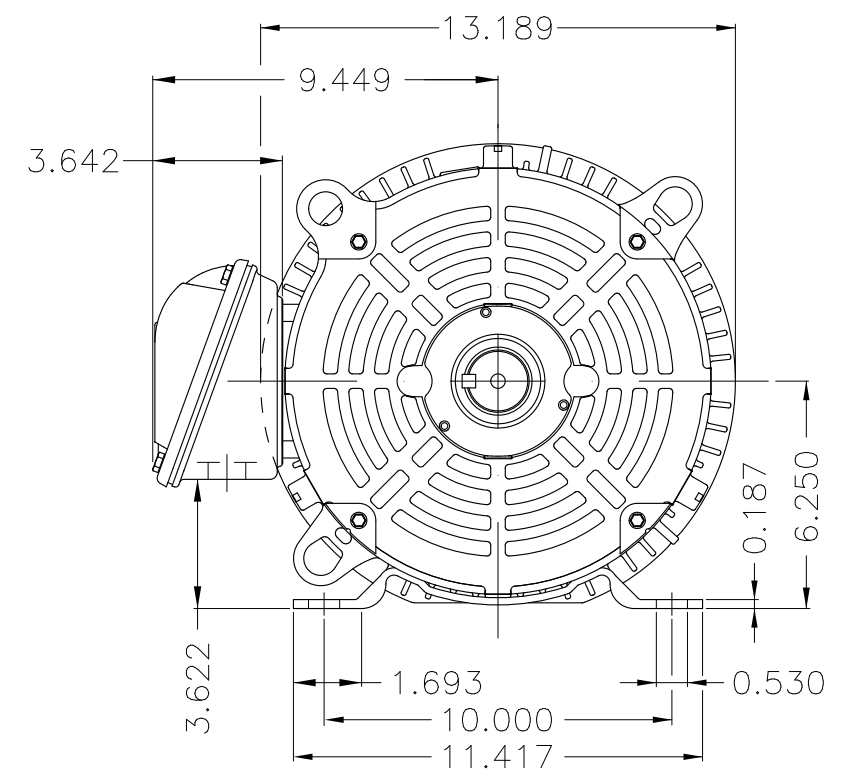
Moment of inertia (J) : 0.8718 sq.ft.lb  
 Duty cycle : Cont.(S1)  
 Insulation class : F  
 Service factor : 1.15  
 Temperature rise : 80 K  
 Design : B

Rev.	Changes Summary	Performed	Checked	Date
Performed by			Page 6 / 6	Revision
Checked by				
Date	27/10/2023			

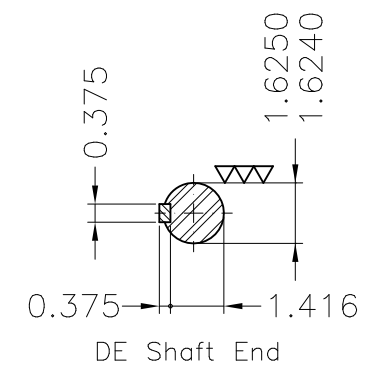
A



B



C



D

E

Color Munsell N 1 matte black									
Painting plan 207N									
Mounting F-1/B3R(D)									
					USERADMIN	00			
ECM	LOC	SUMMARY OF MODIFICATIONS			EXECUTED	CHECKED	RELEASED	DATE	VER
EXECUTED	USERADMIN	THREE PH. MOTOR ROLLED STEEL NEMA PREM. EFF.				<b>PREVIEW</b> WDD   00			
CHECKED		FRAME 254/6T IP55 TEFC							
RELEASED									
REL. DATE		WMO	Jaragua do Sul	Product Engineering	SHEET	1 / 1			

15 HP 02 Poles 60 Hz

A



**NEMA**  
**Premium**



MADE IN MEXICO

**MAT: 12707693 CC029A**  
**W01.TE0IC0X0N**  
**MODEL 01536ET3E254T-S**

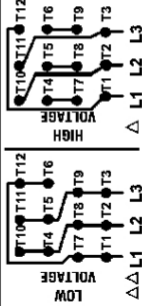
For 60Hz: Class I, Zone 2, IIC  
Class I, Div.2, Gr. A,B,C,D - T3  
DIP 2 Inverter Duty (SF1.00)  
CT 2:1/VT 1000:1

PH 3	Hz 60	HP 15
FR 254/6T		KW 11
DUTY CONT.		V 230/460
ALT 1000 m.a.s.l.		A 34.8/17.4
INS CL F AT 80K	IP55	SFA 40.0/20.0
AMB 40°C	DES B	SF 1.15
ENCL TEFC	CODE G	PF 0.87
		RPM 3525
		NEMA NOM. EFF 91.0%

ALTERNATE RATING: 12.5HP 50Hz 190-220/380-415V SF1.00  
35.4-31.3/17.7-16.6A 2920RPM EFF 89.8% (IE2) IEC 60034-1

For safe area-Inverter duty motor For 60Hz use on VPWM 1000:1 VT, 10:1 CT

DE 6309-Z-C3 ODE 6208-Z-C3 MOBIL POLYREX EM 15797h



T1-BLU T2-WHT  
T3-ORG T4-YEL  
T5-BLK T6-GRY  
T7-PNK T8-RED  
T9-RED BRK  
T10-CURRY  
T11-GRN T12-VLT

INTERCHANGE ANY TWO LINE WIRES TO REVERSE THE ROTATION

WARNING: Motor must be grounded in accordance with local and national electrical codes to prevent serious electrical shocks. Disconnect power source before servicing unit.



AVERTISSEMENT: Le moteur doit être mis à la terre conformément aux codes électriques locaux et nationaux afin d'éviter tout choc électrique grave. Déconnectez l'alimentation avant l'entretien de la machine.

