

TORQUE AND CURRENT VS SPEED CURVE

Three Phase Induction Motor - Squirrel Cage



Customer : Automation Direct

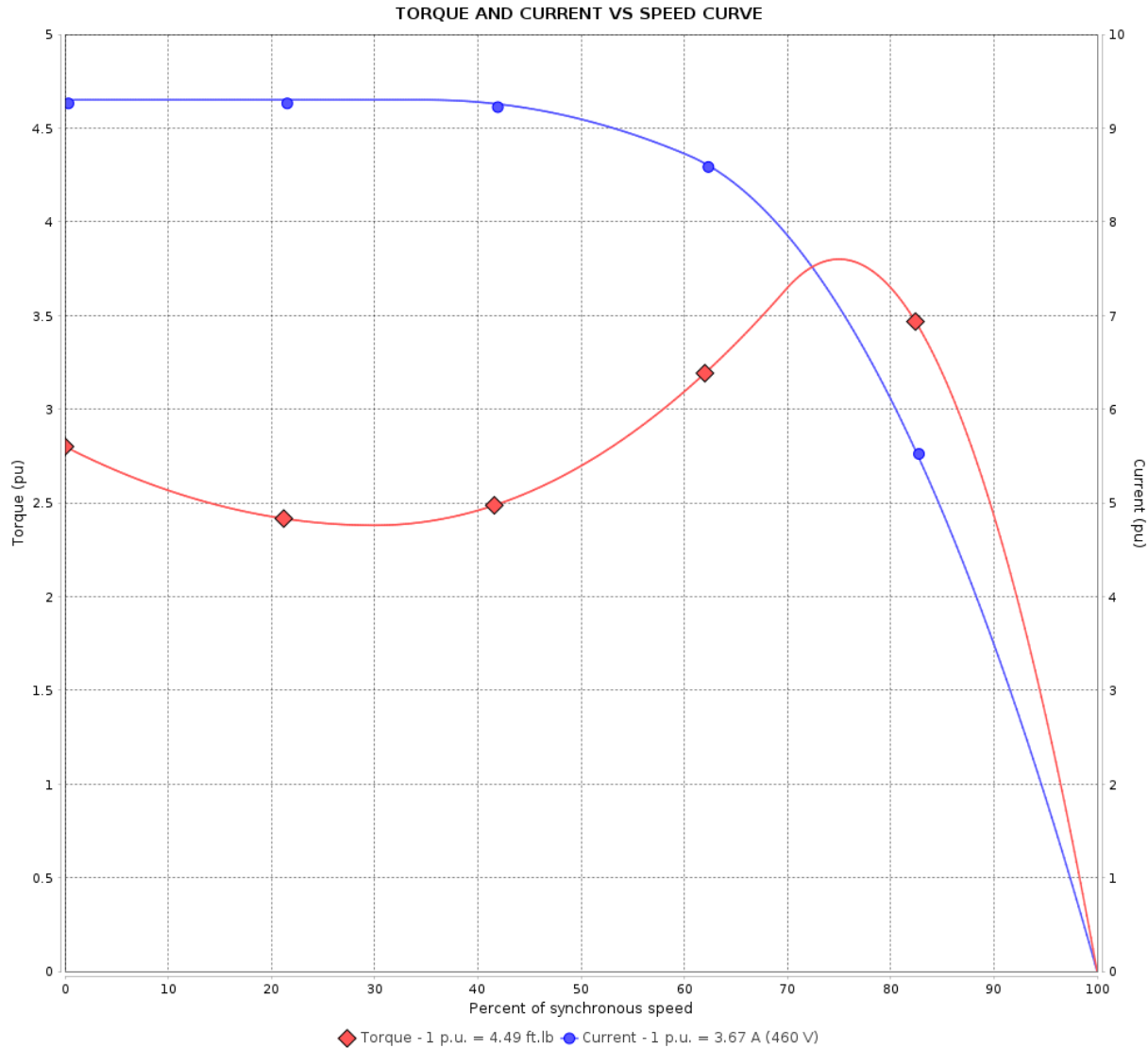
Product line : Premium Efficiency Three-Phase

Product code :

14786574

Catalog # :

00336ET3E56CFL-S



Performance : 230/460 V 60 Hz 2P

Rated current : 7.34/3.67 A
 LRC : 9.3
 Rated torque : 4.49 ft.lb
 Locked rotor torque : 280 %
 Breakdown torque : 380 %
 Rated speed : 3505 rpm

Moment of inertia (J) : 0.1663 sq.ft.lb
 Duty cycle : Cont.(S1)
 Insulation class : F
 Service factor :
 Temperature rise : 80 K
 Design : B

Locked rotor time : 18s (cold) 10s (hot)

Rev.	Changes Summary	Performed	Checked	Date
Performed by		Page		Revision
Checked by		2 / 5		
Date	23/08/2022			

LOAD PERFORMANCE CURVE

Three Phase Induction Motor - Squirrel Cage

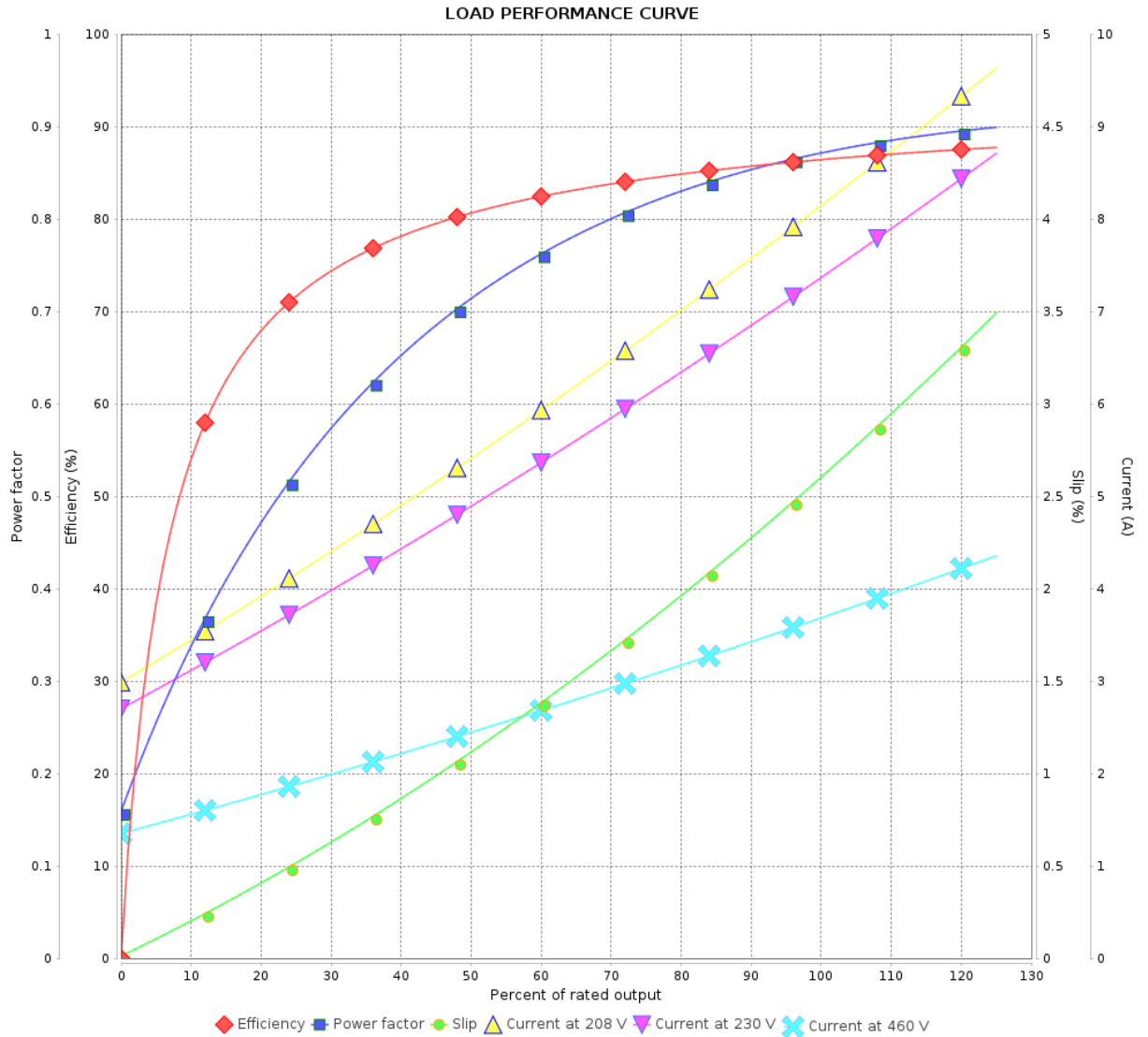


Customer : Automation Direct

Product line : Premium Efficiency Three-Phase

Product code :
Catalog # :

14786574
00336ET3E56CFL-S



Performance : 230/460 V 60 Hz 2P

Rated current : 7.34/3.67 A
 LRC : 9.3
 Rated torque : 4.49 ft.lb
 Locked rotor torque : 280 %
 Breakdown torque : 380 %
 Rated speed : 3505 rpm

Moment of inertia (J) : 0.1663 sq.ft.lb
 Duty cycle : Cont.(S1)
 Insulation class : F
 Service factor :
 Temperature rise : 80 K
 Design : B

Rev.	Changes Summary	Performed	Checked	Date
Performed by			Page	Revision
Checked by				
Date				

THERMAL LIMIT CURVE

Three Phase Induction Motor - Squirrel Cage



Customer : Automation Direct

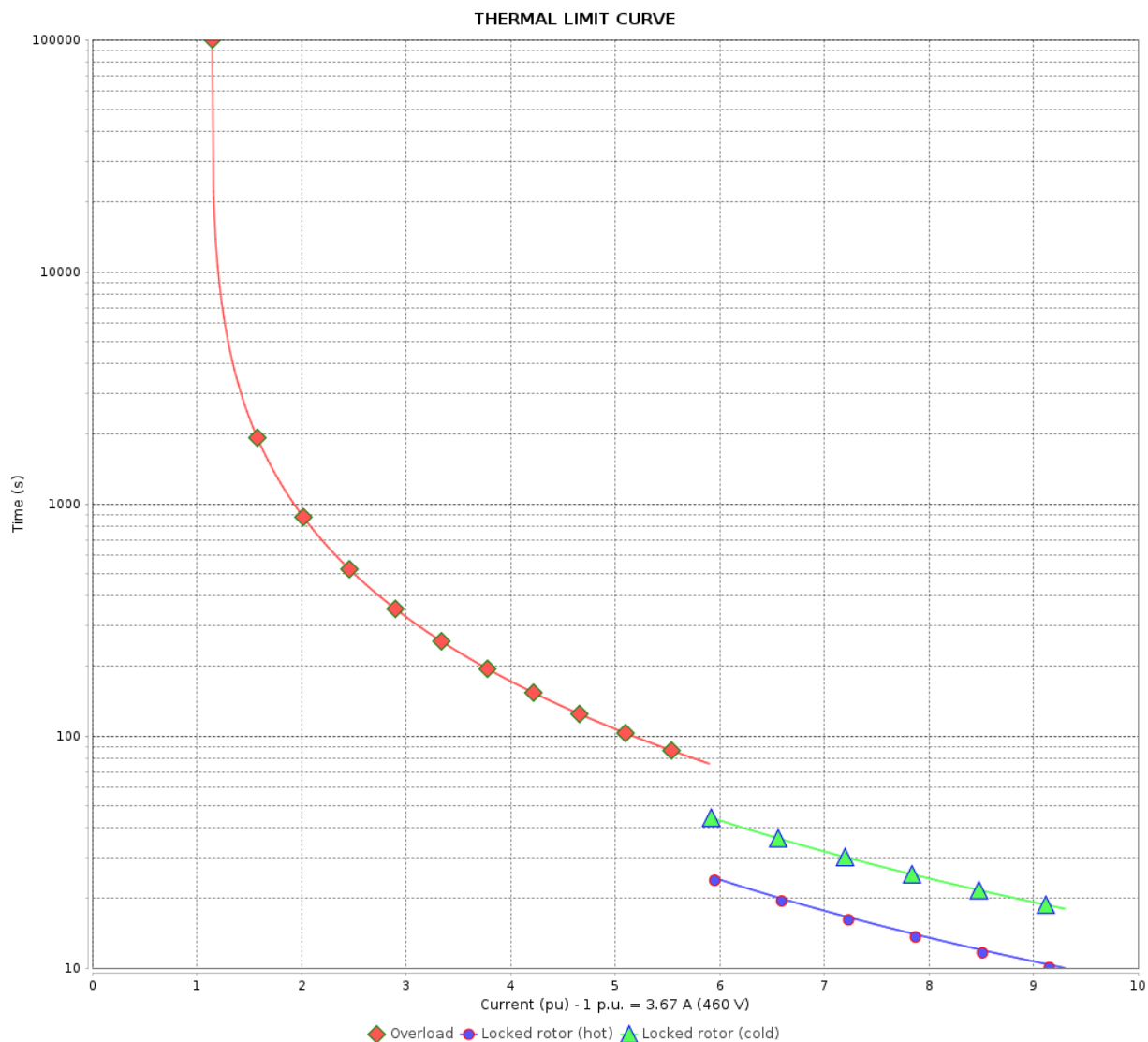
Product line : Premium Efficiency Three-Phase

Product code :

14786574

Catalog # :

00336ET3E56CFL-S



Performance : 230/460 V 60 Hz 2P

Rated current : 7.34/3.67 A
 LRC : 9.3
 Rated torque : 4.49 ft.lb
 Locked rotor torque : 280 %
 Breakdown torque : 380 %
 Rated speed : 3505 rpm

Moment of inertia (J) : 0.1663 sq.ft.lb
 Duty cycle : Cont.(S1)
 Insulation class : F
 Service factor :
 Temperature rise : 80 K
 Design : B

Heating constant

Cooling constant

Rev.	Changes Summary	Performed	Checked	Date
Performed by			Page	Revision
Checked by				
Date				

VFD OPERATION CURVE

Three Phase Induction Motor - Squirrel Cage

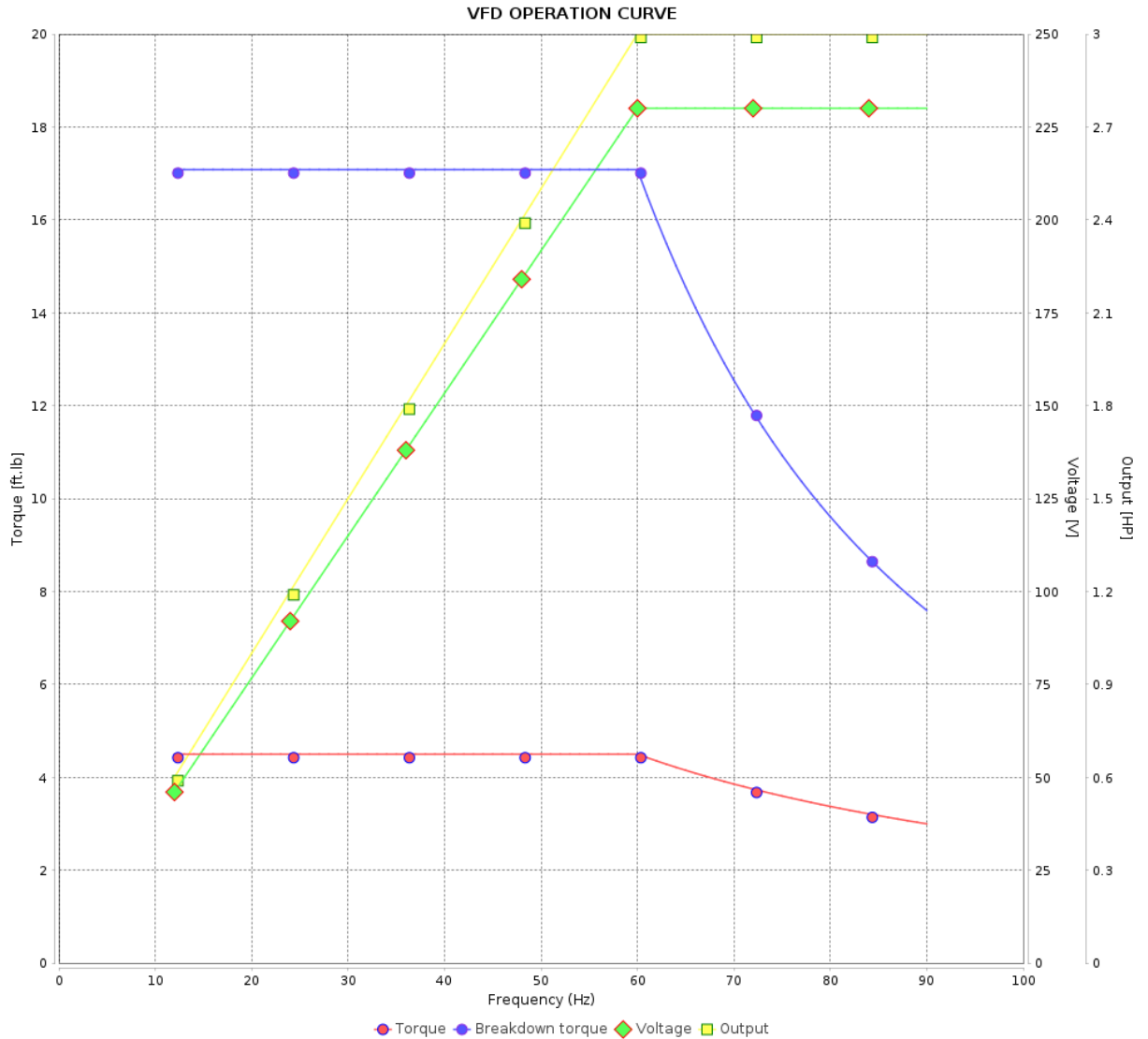


Customer : Automation Direct

Product line : Premium Efficiency Three-Phase

Product code :
Catalog # :

14786574
00336ET3E56CFL-S



Performance : 230/460 V 60 Hz 2P

Rated current : 7.34/3.67 A
 LRC : 9.3
 Rated torque : 4.49 ft.lb
 Locked rotor torque : 280 %
 Breakdown torque : 380 %
 Rated speed : 3505 rpm

Moment of inertia (J) : 0.1663 sq.ft.lb
 Duty cycle : Cont.(S1)
 Insulation class : F
 Service factor :
 Temperature rise : 80 K
 Design : B

Rev.	Changes Summary	Performed	Checked	Date
Performed by			Page	Revision
Checked by				
Date				

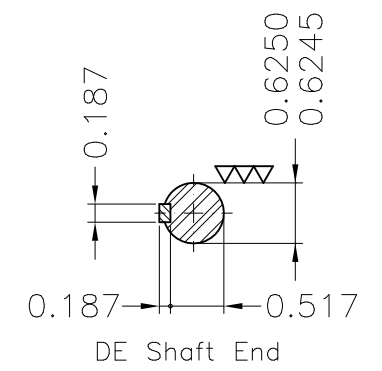
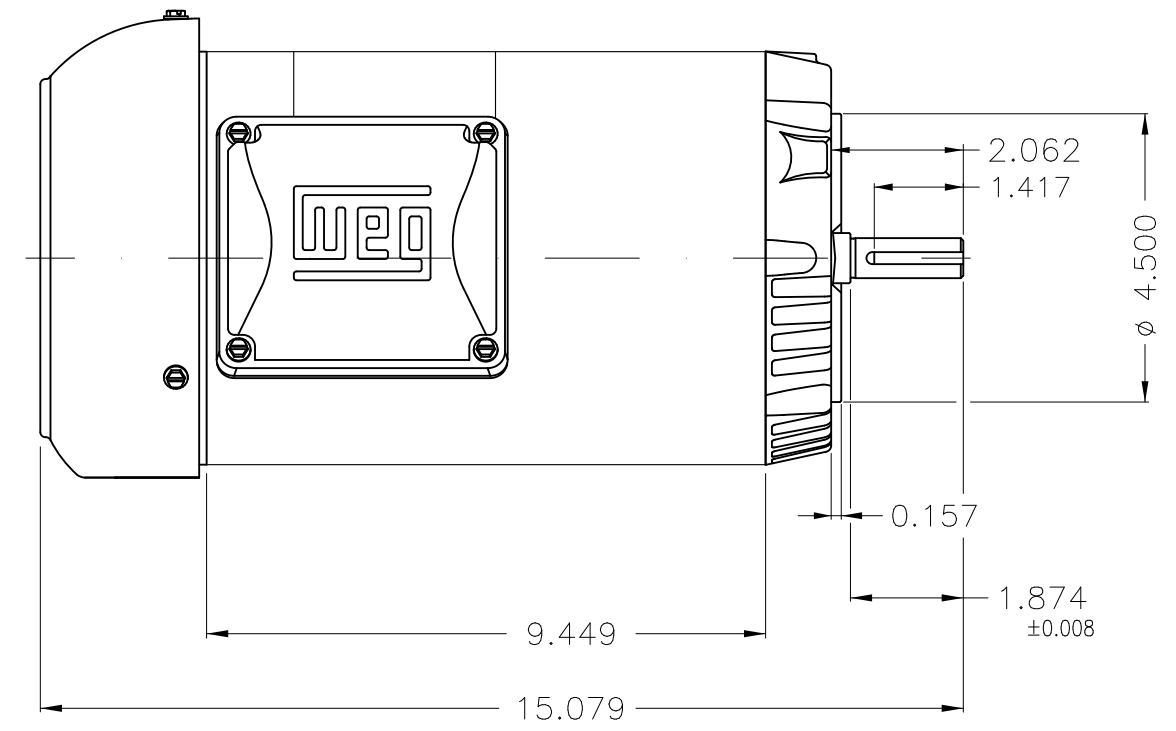
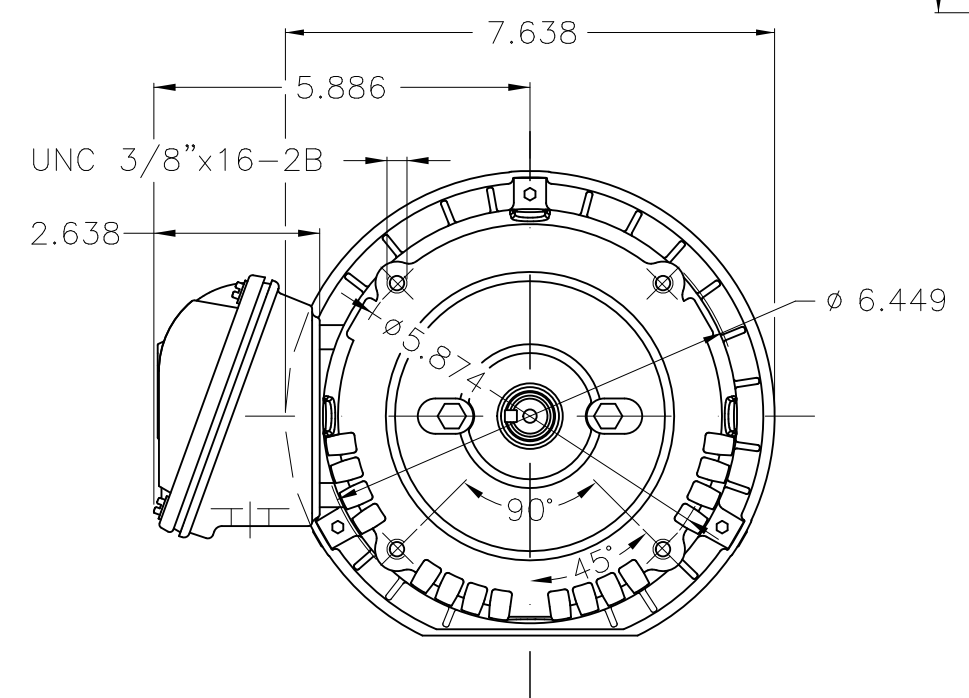
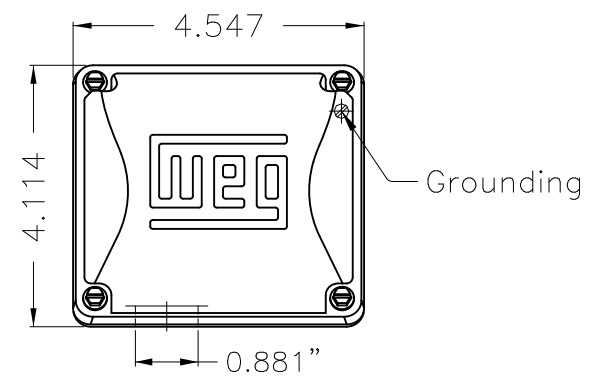
A

B

C

D

E



Fan cover - steel plate
 Color Munsell N 1 matte black
 Painting plan 207N
 Mounting F-1/B14R(D)

ECM	LOC	SUMMARY OF MODIFICATIONS	EXECUTED	CHECKED	RELEASED	DATE	VER
EXECUTED	HYBRISUSER	THREE PH. MOTOR ROLLED STEEL PREM. EFF.					
CHECKED		FRAME 56C IP55 TEFC					
RELEASED							
REL DT.	WMO	Jaragua do Sul	Product Engineering	PREVIEW		WDD	
			SHEET		1 / 1		

3 HP 02 Poles 60 Hz





NEMA
Premium



MADE IN BRAZIL

MAT: 14786574 CC029A

W01.TE0IC0X0X

MODEL 00336ET3E56CFL-S

17AUG2022 B/N:

**For 60Hz: Class I, Zone 2, IIC
Class I, Div.2, Gr. A,B,C,D - T3
Div 2 Inverter Duty (SF1.00)**

CT 2:1/VT 1000:1

PH 3	Hz 60	HP 3.0
FR 56C		KW 2.2
DUTY CONT.		V 230/460
ALT 1000 m.a.s.l.		A 7.34/3.67
INS CL F AT 80K	IP55	SFA 8.44/4.22
AMB 40°C	DES B	SF 1.15
ENCL TEFC	CODE L	PF 0.87
USABLE @ 208V 7.76A		RPM 3505
SF1.00		NEMA NOM. EFF 86.5%

ALTERNATE RATING: 3.0HP 50Hz 190-220/380-415V SF1.15
8.88-7.72/4.44-4.09A 2870RPM EFF 84.6% (IE2) IEC 60034-1

For safe area-inverter duty motor For 60Hz use on VPWM 1000:1 VT, 5:1 CT

DE 6204-ZZ	ODE 6202-ZZ	MOBIL POLYREX EM
-------------------	--------------------	-------------------------



T1-BLU T2-WHT
 T3-ORG T4-YEL
 T5-BLK T6-GRY
 T7-PNK T8-RED
 T9-BRK RED

INTERCHANGE ANY TWO LINE WIRES TO REVERSE THE ROTATION



WARNING: Motor must be grounded in accordance with local and national electrical codes to prevent serious electrical shocks. Disconnect power source before servicing unit.

AVERTISSEMENT: Le moteur doit être mis à la terre

conformément aux codes électriques locaux et nationaux afin d'éviter tout choc électrique grave. Déconnectez l'alimentation avant l'entretien de la machine.

