

# DATA SHEET



## Single Phase Induction Motor - Squirrel Cage

Customer	: Automation Direct			
Product line	: Single-Phase		Product code :	13821108
			Catalog # :	00336ES1E145TC-S
Frame	: 143/5TC		Locked rotor time	: 10s (cold) 6s (hot)
Output	: 3 HP (2.2 kW)		Temperature rise	: 80 K
Poles	: 2		Duty cycle	: Cont.(S1)
Frequency	: 60 Hz		Ambient temperature	: -20°C to +40°C
Rated voltage	: 208-230/460 V		Altitude	: 1000 m.a.s.l.
Rated current	: 14.0-12.7/6.35 A		Protection degree	: IP55
L. R. Amperes	: 112-102/50.8 A		Cooling method	: IC411 - TEFC
LRC	: 8.0x(Code J)		Mounting	: F-1
No load current	: 3.45-4.00/2.00 A		Rotation <sup>1</sup>	: Both (CW and CCW)
Rated speed	: 3490 rpm		Noise level <sup>2</sup>	: 68.0 dB(A)
Slip	: 3.06 %		Starting method	: Direct On Line
Rated torque	: 4.51 ft.lb		Approx. weight <sup>3</sup>	: 49.2 lb
Locked rotor torque	: 210 %			
Breakdown torque	: 250 %			
Insulation class	: F			
Service factor	: 1.15			
Moment of inertia (J)	: 0.0944 sq.ft.lb			
Design	: L			
Output	25%	50%	75%	100%
Efficiency (%)	74.8	76.0	79.0	80.0
Power Factor	0.59	0.86	0.92	0.94
	Foundation loads			
			Max. traction	: 73 lb
			Max. compression	: 123 lb
		<u>Drive end</u>	<u>Non drive end</u>	
Bearing type	:	6205 ZZ	6203 ZZ	
Sealing	:	V'Ring	Without Bearing Seal	
Lubrication interval	:	-	-	
Lubricant amount	:	-	-	
Lubricant type	:	Mobil Polyrex EM		
Notes				
This revision replaces and cancel the previous one, which must be eliminated. (1) Looking the motor from the shaft end. (2) Measured at 1m and with tolerance of +3dB(A). (3) Approximate weight subject to changes after manufacturing process. (4) At 100% of full load.			These are average values based on tests with sinusoidal power supply, subject to the tolerances stipulated in NEMA MG-1.	
Rev.	Changes Summary		Performed	Checked
Performed by			Page	Revision
Checked by				
Date	22/08/2022		1 / 2	

# LOAD PERFORMANCE CURVE

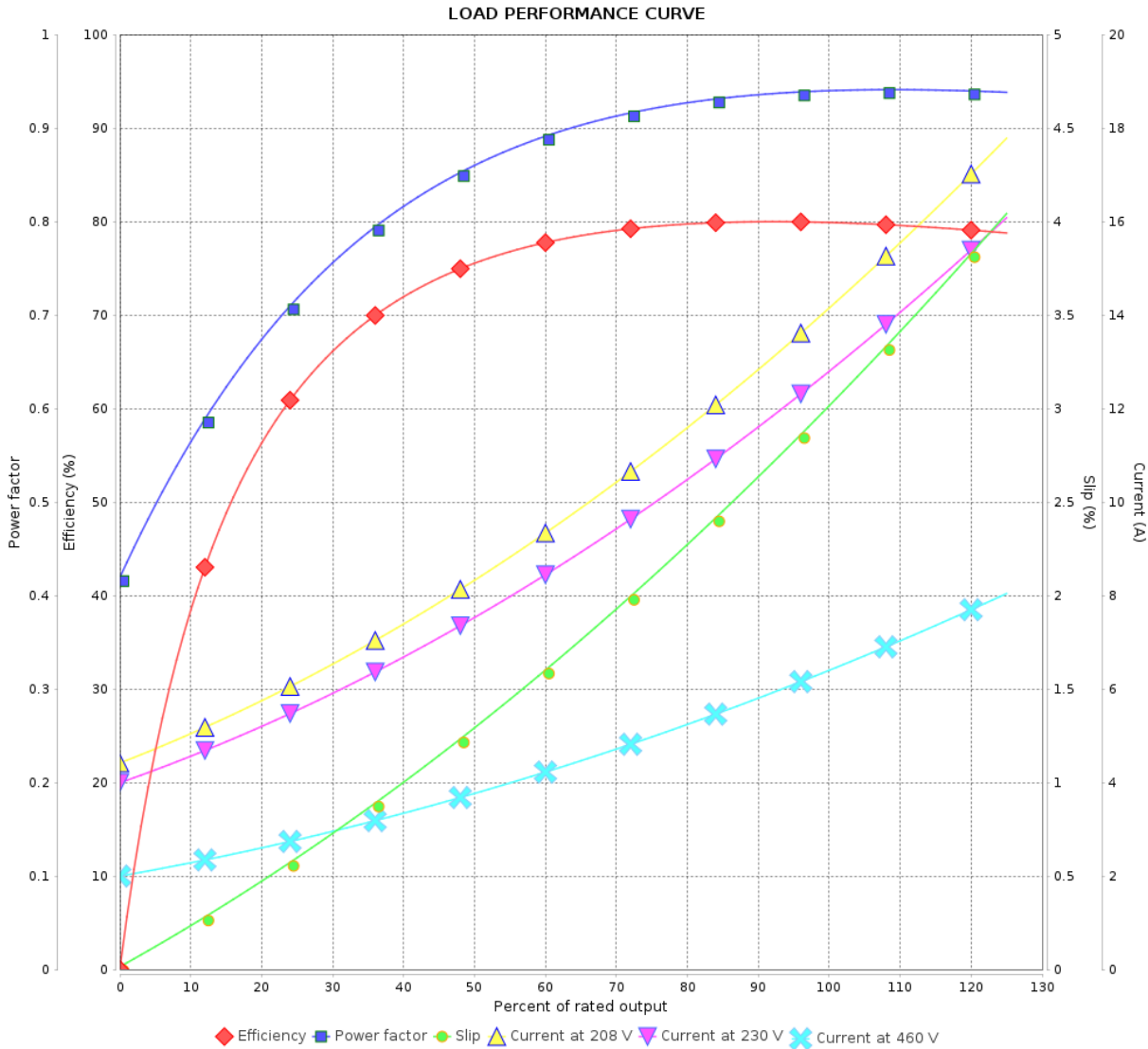
## Single Phase Induction Motor - Squirrel Cage



Customer : Automation Direct

Product line : Single-Phase

Product code : 13821108  
Catalog # : 00336ES1E145TC-S



Performance : 208-230/460 V 60 Hz 2P

Rated current : 14.0-12.7/6.35 A  
LRC : 8.0  
Rated torque : 4.51 ft.lb  
Locked rotor torque : 210 %  
Breakdown torque : 250 %  
Rated speed : 3490 rpm

Moment of inertia (J) : 0.0944 sq.ft.lb  
Duty cycle : Cont.(S1)  
Insulation class : F  
Service factor :  
Temperature rise : 80 K  
Design : L

Rev.	Changes Summary	Performed	Checked	Date
Performed by			Page 2 / 2	Revision
Checked by				
Date	22/08/2022			

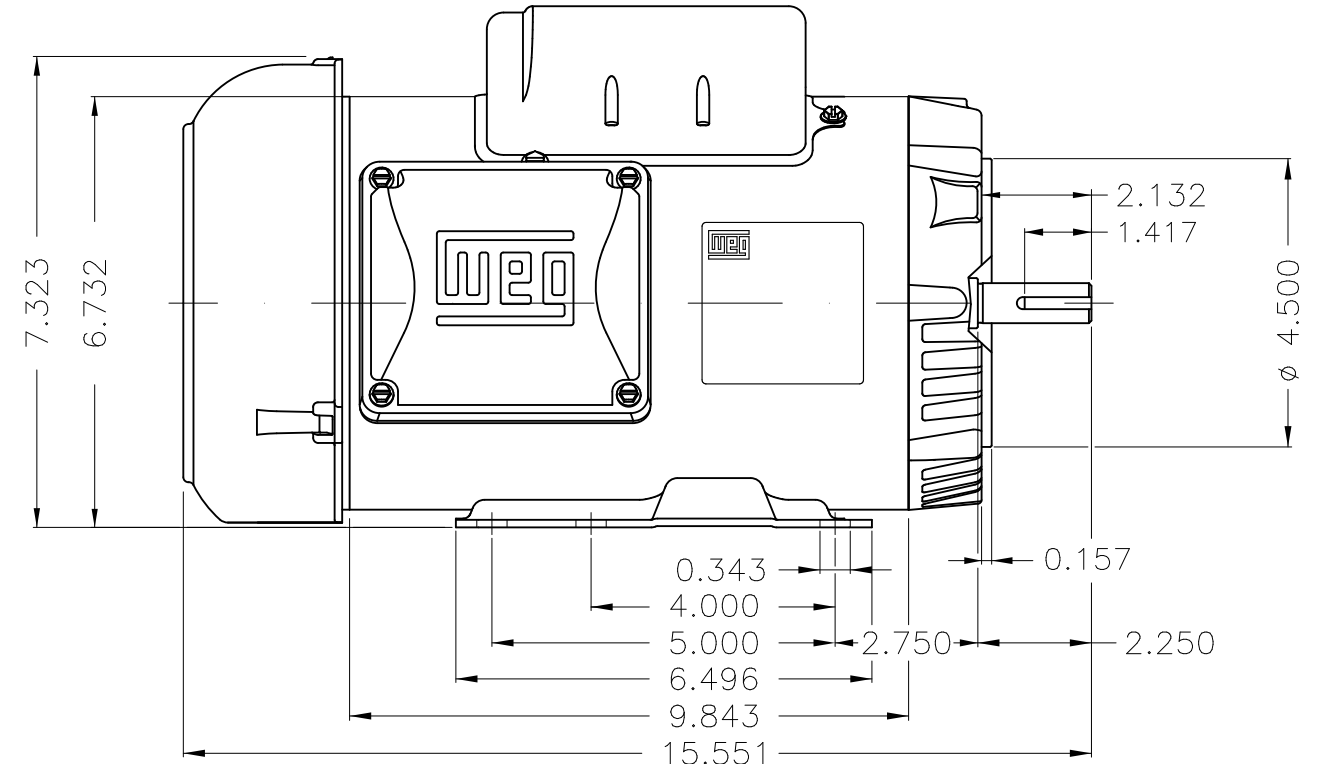
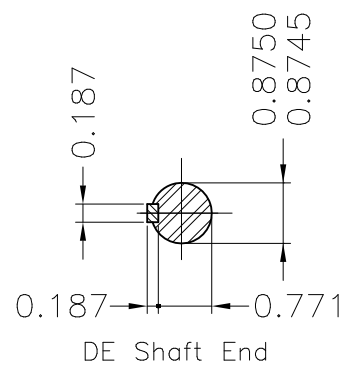
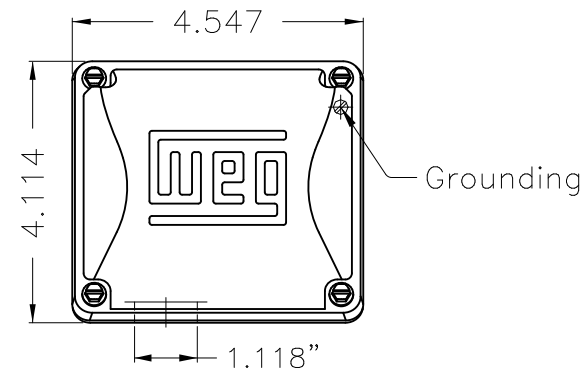
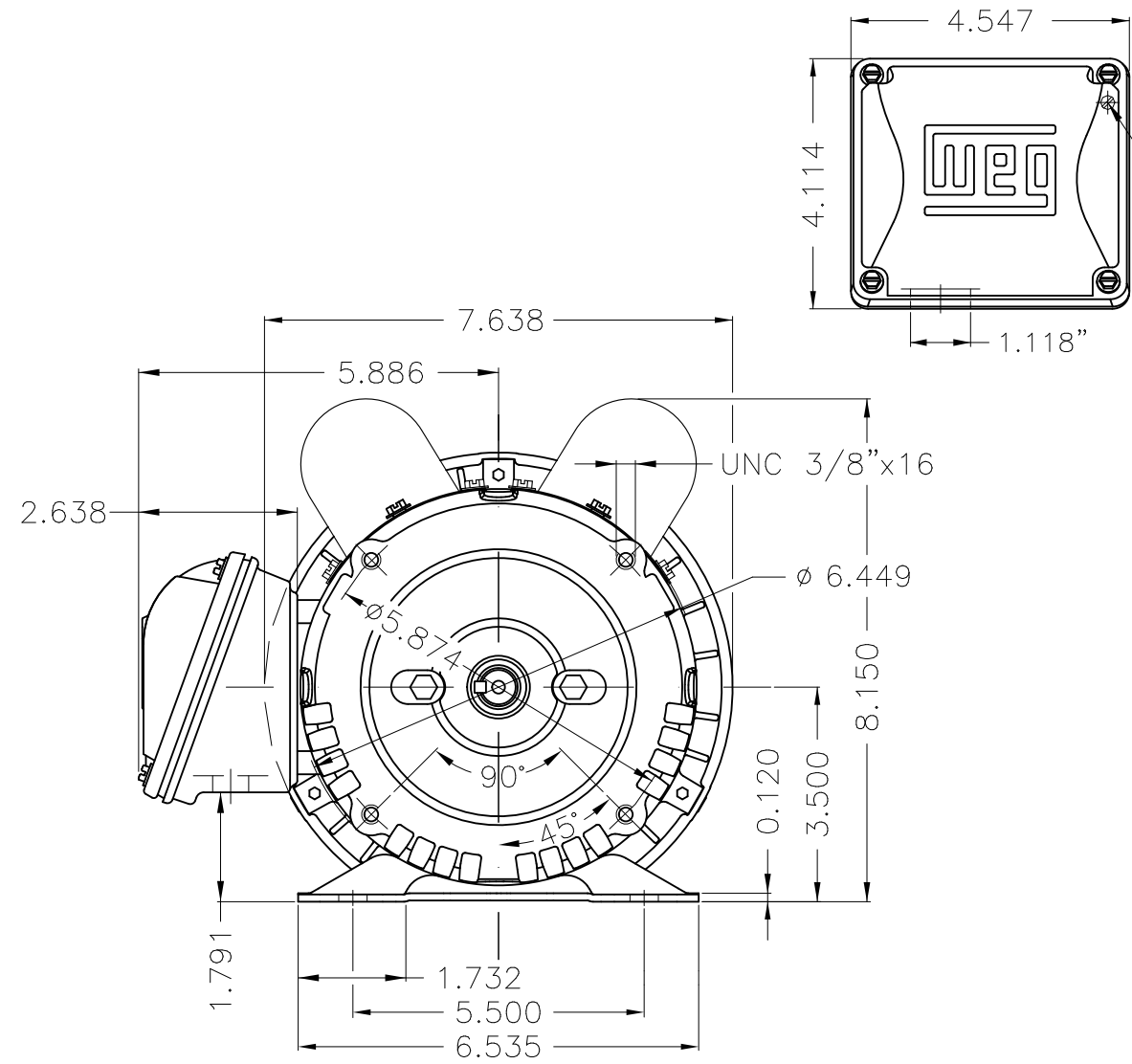
A

B

C

D

E



Mounting F-1/B34R(D)									
ECM	LOC	SUMMARY OF MODIFICATIONS			EXECUTED	CHECKED	RELEASED	DATE	VER
EXECUTED	HYBRISUSER	SINGLE PH. MOTOR ROLLED STEEL							
CHECKED		FRAME 143/5TC IP55 TEFC							
RELEASED									
REL DT.		WMO	Jaragua do Sul	Product Engineering					

3 HP 02 Poles 60 Hz

PREVIEW  
WDD  
SHEET 1 / 1





MADE IN BRAZIL

**MAT: 13821108**

**W01.ME01C0X0X**

**MODEL 00336ES1E145TC-S**

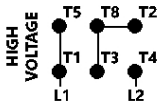
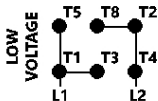
**18AUG2022 B/N:**

PH 1	Hz 60	HP 3.0
FR 143/5TC		KW 2.2
DUTY CONT.		V 208-230/460
ALT 1000 m.a.s.l		A 14.0-12.7/6.35
INS CL F ΔT 80K	IP55	SFA -
AMB 40°C	DES L	SF 1.15
ENCL TEFC	CODE J	PF 0.94
USABLE @ 208V SF1.00		RPM 3490
		NEMA NOM. EFF 80.0%

**Electric Motor**

DE 8205-ZZ	ODE 8203-ZZ	MOBIL POLYREX EM
------------	-------------	------------------

**REVERSE ROTATION INVERT T5 BY T8**



T1-BLU  
T2-WHT  
T3-ORG  
T4-YEL  
T5-BLK  
T8-RED



**WARNING:** Motor must be grounded in accordance with local and national electrical codes to prevent serious electrical shocks. Disconnect power source before servicing unit.



**AVERTISSEMENT:** Le moteur doit être mis à la terre conformément aux codes électriques locaux et nationaux afin d'éviter tout choc électrique grave. Déconnectez l'alimentation avant l'entretien de la machine.

