

# DATA SHEET



## Single Phase Induction Motor - Squirrel Cage

Customer : Automation Direct																			
Product line : Single-Phase	Product code : 14786566 Catalog # : 00158ES1B56CFL-S																		
Frame : 56C Output : 1.5 HP (1.1 kW) Poles : 4 Frequency : 60 Hz Rated voltage : 115/208-230 V Rated current : 15.0/8.27-7.48 A L. R. Amperes : 120/66.2-59.8 A LRC : 8.0x(Code L) No load current : 7.80/3.36-3.90 A Rated speed : 1745 rpm Slip : 3.06 % Rated torque : 4.51 ft.lb Locked rotor torque : 250 % Breakdown torque : 270 % Insulation class : F Service factor : 1.15 Moment of inertia (J) : 0.1426 sq.ft.lb Design : L	Locked rotor time : 14s (cold) 8s (hot) Temperature rise : 80 K Duty cycle : Cont.(S1) Ambient temperature : -20°C to +40°C Altitude : 1000 m.a.s.l. Protection degree : IP55 Cooling method : IC411 - TEFC Mounting : F-1 Rotation <sup>1</sup> : Both (CW and CCW) Noise level <sup>2</sup> : 54.0 dB(A) Starting method : Direct On Line Approx. weight <sup>3</sup> : 46.8 lb																		
<table border="1"> <tr> <td>Output</td> <td>25%</td> <td>50%</td> <td>75%</td> <td>100%</td> </tr> <tr> <td>Efficiency (%)</td> <td>67.0</td> <td>69.0</td> <td>75.0</td> <td>77.0</td> </tr> <tr> <td>Power Factor</td> <td>0.42</td> <td>0.68</td> <td>0.78</td> <td>0.83</td> </tr> </table>	Output	25%	50%	75%	100%	Efficiency (%)	67.0	69.0	75.0	77.0	Power Factor	0.42	0.68	0.78	0.83	Foundation loads Max. traction : 96 lb Max. compression : 143 lb			
Output	25%	50%	75%	100%															
Efficiency (%)	67.0	69.0	75.0	77.0															
Power Factor	0.42	0.68	0.78	0.83															
<table border="1"> <tr> <td></td> <td><u>Drive end</u></td> <td><u>Non drive end</u></td> </tr> <tr> <td>Bearing type :</td> <td>6204 ZZ</td> <td>6202 ZZ</td> </tr> <tr> <td>Sealing :</td> <td>V'Ring</td> <td>Without Bearing Seal</td> </tr> <tr> <td>Lubrication interval :</td> <td>-</td> <td>-</td> </tr> <tr> <td>Lubricant amount :</td> <td>-</td> <td>-</td> </tr> <tr> <td>Lubricant type :</td> <td colspan="2">Mobil Polyrex EM</td> </tr> </table>		<u>Drive end</u>	<u>Non drive end</u>	Bearing type :	6204 ZZ	6202 ZZ	Sealing :	V'Ring	Without Bearing Seal	Lubrication interval :	-	-	Lubricant amount :	-	-	Lubricant type :	Mobil Polyrex EM		
	<u>Drive end</u>	<u>Non drive end</u>																	
Bearing type :	6204 ZZ	6202 ZZ																	
Sealing :	V'Ring	Without Bearing Seal																	
Lubrication interval :	-	-																	
Lubricant amount :	-	-																	
Lubricant type :	Mobil Polyrex EM																		
Notes																			
This revision replaces and cancel the previous one, which must be eliminated. (1) Looking the motor from the shaft end. (2) Measured at 1m and with tolerance of +3dB(A). (3) Approximate weight subject to changes after manufacturing process. (4) At 100% of full load.	These are average values based on tests with sinusoidal power supply, subject to the tolerances stipulated in NEMA MG-1.																		
Rev.	Changes Summary	Performed	Checked	Date															
Performed by																			
Checked by			Page	Revision															
Date	22/08/2022		1 / 2																

# LOAD PERFORMANCE CURVE

Single Phase Induction Motor - Squirrel Cage



Customer : Automation Direct

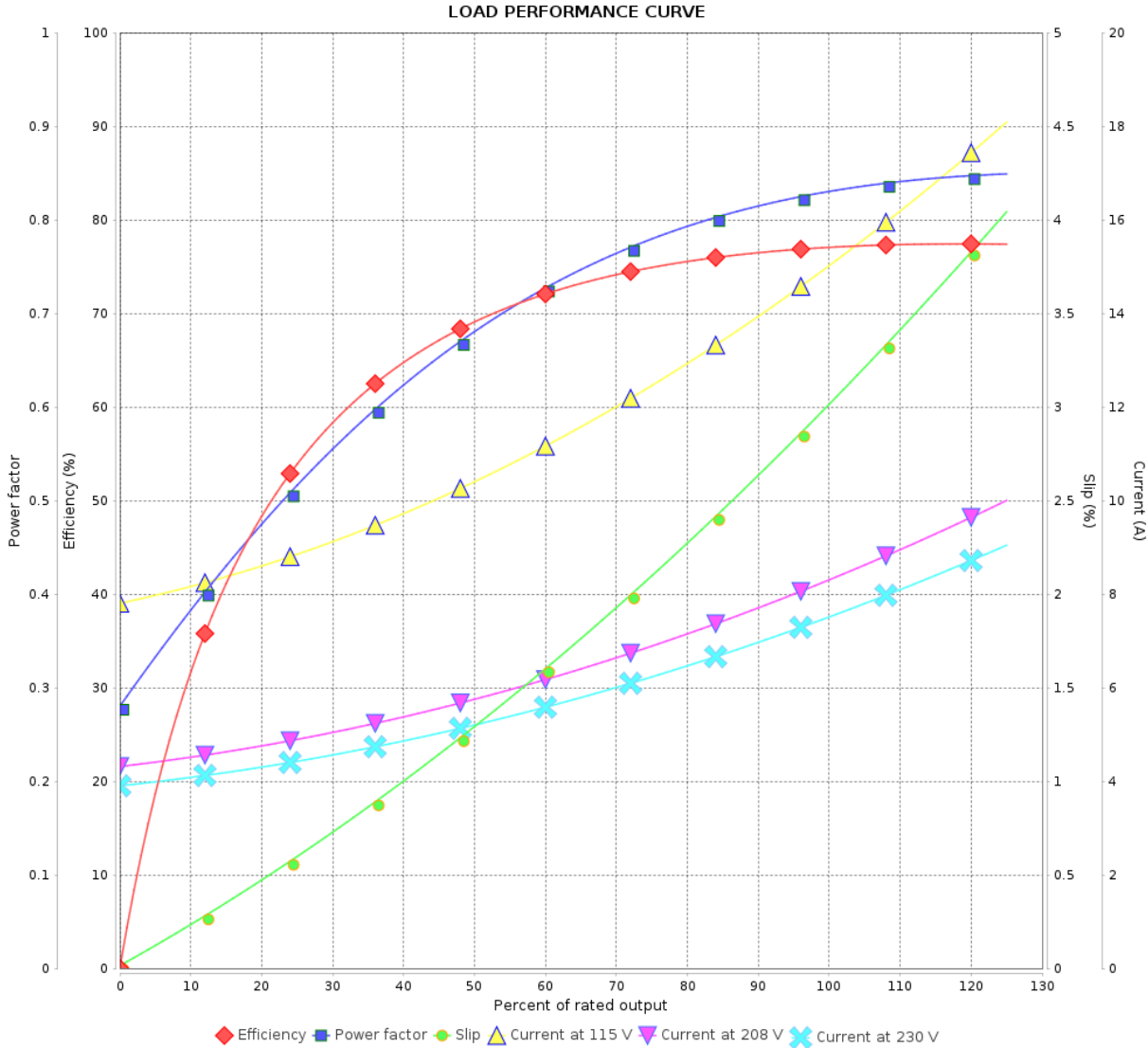
Product line : Single-Phase

Product code :

14786566

Catalog # :

00158ES1B56CFL-S

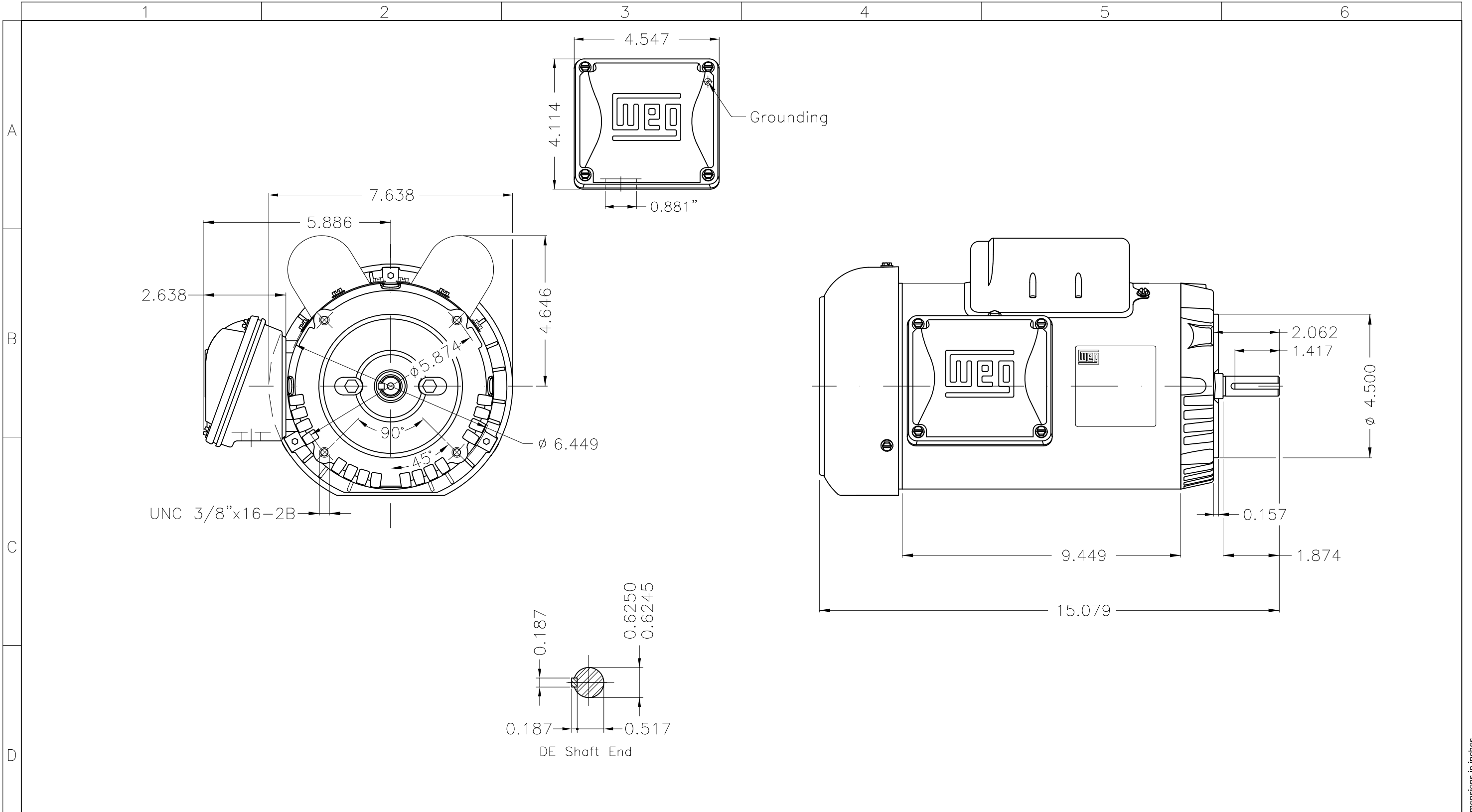


Performance : 115/208-230 V 60 Hz 4P

Rated current : 15.0/8.27-7.48 A  
 LRC : 8.0  
 Rated torque : 4.51 ft.lb  
 Locked rotor torque : 250 %  
 Breakdown torque : 270 %  
 Rated speed : 1745 rpm

Moment of inertia (J) : 0.1426 sq.ft.lb  
 Duty cycle : Cont.(S1)  
 Insulation class : F  
 Service factor :  
 Temperature rise : 80 K  
 Design : L

Rev.	Changes Summary	Performed	Checked	Date
Performed by			Page 2 / 2	Revision
Checked by				
Date	22/08/2022			



A  
B  
C  
D  
E

Dimensions in inches XME A3

Fan cover - steel plate									
Color Munsell N 1 matte black									
Painting plan 207N									
Mounting F-1/B14R(D)									
ECM	LOC	SUMMARY OF MODIFICATIONS			EXECUTED	CHECKED	RELEASED	DATE	VER
EXECUTED	HYBRISUSER	SINGLE PH. MOTOR ROLLED STEEL			PREVIEW		WDD		
CHECKED		FRAME 56C IP55 TEFC			WDD		WEG		
RELEASED					SHEET		1 / 1		
REL DT.	WMO	Jaragua do Sul	Product Engineering						

1.5 HP 04 Poles 60 Hz

A



MADE IN BRAZIL

**MAT: 14786566**

**W01.ME01C0X0X**

**MODEL 00158ES1B56CFL-S**

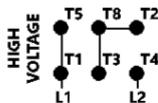
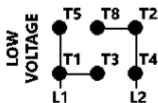
**04JUL2022 B/N:**

PH 1	Hz 60	HP 1.5
FR 56C		KW 1.1
DUTY CONT.		V 115/208-230
ALT 1000 m.a.s.l		A 15.0/8.27-7.48
INS CL F ΔT 80K	IP55	SFA -
AMB 40°C	DES L	SF 1.15
ENCL TEFC	CODE L	PF 0.83
USABLE @ 208V SF1.00		RPM 1745
		NEMA NOM. EFF 77.0%

**Electric Motor**

DE 8204-ZZ	ODE 8202-ZZ	MOBIL POLYREX EM	
------------	-------------	------------------	--

**REVERSE ROTATION INVERT T5 BY T8**



T1-BLU  
T2-WHT  
T3-ORG  
T4-YEL  
T5-BLK  
T8-RED



**WARNING:** Motor must be grounded in accordance with local and national electrical codes to prevent serious electrical shocks. Disconnect power source before servicing unit.



**AVERTISSEMENT:** Le moteur doit être mis à la terre conformément aux codes électriques locaux et nationaux afin d'éviter tout choc électrique grave. Déconnectez l'alimentation avant l'entretien de la machine.

